



Blockit Corvette "Quick & Quiet" Acoustical Sound Deadening System

Patented! & Proudly Made In The USA!

- Quiet down your Corvette interior in SECONDS!
- NO need to rip out your carpet & interior!
- Pre - Cut & lays right over your factory carpet!
- 4 layers of REAL automotive grade acoustical soundproofing materials - FMVSS-302 Tested & approved!
- Great for taking the edge off exhaust, tire /road noise and long trips
- UV protected top layer is durable & looks great
- 3 Piece system!
- Helps keep your cargo area cooler!
- No Adhesive. All pieces are removable & reusable!
- Manufactured under strict ISO 9001 regulations
- Made in the USA!

IMPORTANT:

To fit in the box for shipping your Blockit was rolled. Any wrinkles or creases will go away over time. You might notice a slight more sound deadening once the mat completely expands & decompresses. Some of the pieces might have a curves to them from shipping. They will flatten over time. If needed, lay them out flat until they return to their original flat state. **To be the most effective, make sure all pieces lay flat & flush to the carpeted areas once installed. This applies especially the pieces that go behind the seats.**

The Gray side of the Blockit always goes against the carpet. The Black Side away.

Like many new products the Blockit might have a scent to it when you open the box & place it in your car for the first time. Simply leave it out exposed to the air which will help dissipate the new smell faster.

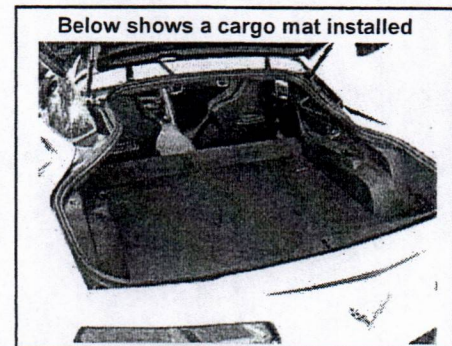
DIRECTIONS:

This Kit Consists of (3) acoustic deadening panels.

One cargo mat (trunk for convertible).

Two small Behind the seat Panels (One for each seat)

Gray side always towards the carpet (touches the carpet). The Black side away from the carpet.



Below shows a cargo mat installed

(1) **LARGE CARGO MAT** - Lay the drop in mat according to the shape to fit snug in your cargo area (trunk if convertible). Black Side up. Foam Side Down. You can place an aftermarket carpet on top of the Blockit.

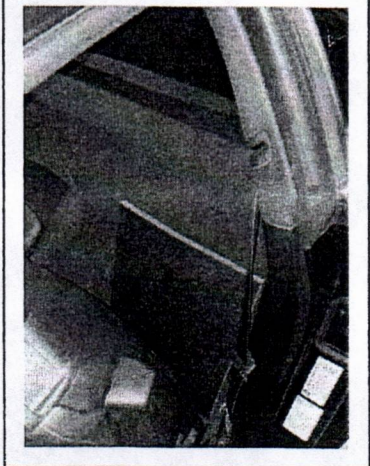
(2) **BEHIND THE SEAT PIECES** (Rectangles)

They look like squares but if you measure them you will see one side is longer than the other. Place them, the long way up & down. One mat goes behind the Driver seat and one behind the Passenger seat. Lay them flush against the carpeted wall (not under the seat). Gray foam side towards the carpet. These Help suppress the noise/resonance that seeps through the carpeted wall behind the seat. Make sure the pieces fit flat and totally against the carpeted wall. Try not to have any gaps. For even more damping & noise reduction, in this area behind the seat, check out our DeadMats.

(3) Since the top layer of the cargo mat is vinyl, we recommend you secure any items placed on it from sliding. An aftermarket carpet could help prevent sliding too.

Placing a hard plastic or hard rubber like mat or protector on top of the Blockit (in the cargo area or trunk) could prohibit the Blockit from it's optimal sound deadening performance. Noise will bounce off these coverings rather than be absorbed by the Blockit. However you can place a plush quality carpeted aftermarket mat on top of the Blockit.

Below shows the seat forward & the piece placed behind it.



Contact us if you have any questions

TKO Performance- 1800 778 9898 – www.tkoperformance.com

Patent Product! / Made in The USA!