



542 3rd St. Lake Elsinore, CA 92530

**Tel: 951.245.8669; Fax 951.245.5481**



**CHARGER / 300 REAR 2011-2020**

U.S. PATENTS

#6,808,223; #6,845,547; #7,140,075; #7,059,655

PATENTS AGGRESSIVELY ENFORCED!

**PLEASE CAREFULLY READ ALL INSTRUCTIONS BEFORE  
ATTEMPTING TO INSTALL THIS PRODUCT.**

**FOR QUESTIONS PLEASE  
CONTACT US AT (951) 245-8669**



**THIS KIT INCLUDES:**

- RIGHT AND LEFT HINGE ASSEMBLIES
- RIGHT AND LEFT SHOCK BRACKETS
- 2 SHOCKS
- 2 PINS
- 2 M8 X 1.25 BOLTS WITH WASHERS

**TOOLS REQUIRED FOR INSTALLATION:**

	➤ AIR RACHET, GRINDER AND CUTTER.
	➤ 7MM, 8MM, 10MM, 11MM, 13MM, SOCKETS AND EXTENSION.
	➤ FORK AND PHILLIP'S SCREW DRIVERS
	➤ SPACERS FOR THE DOOR GAP.
	➤ 3/16 ALLEN WRENCH
	➤ M8 x 1.25 Drill and Tap Set
	➤ 9/16 WRENCH
	➤ LOCKTITE RED

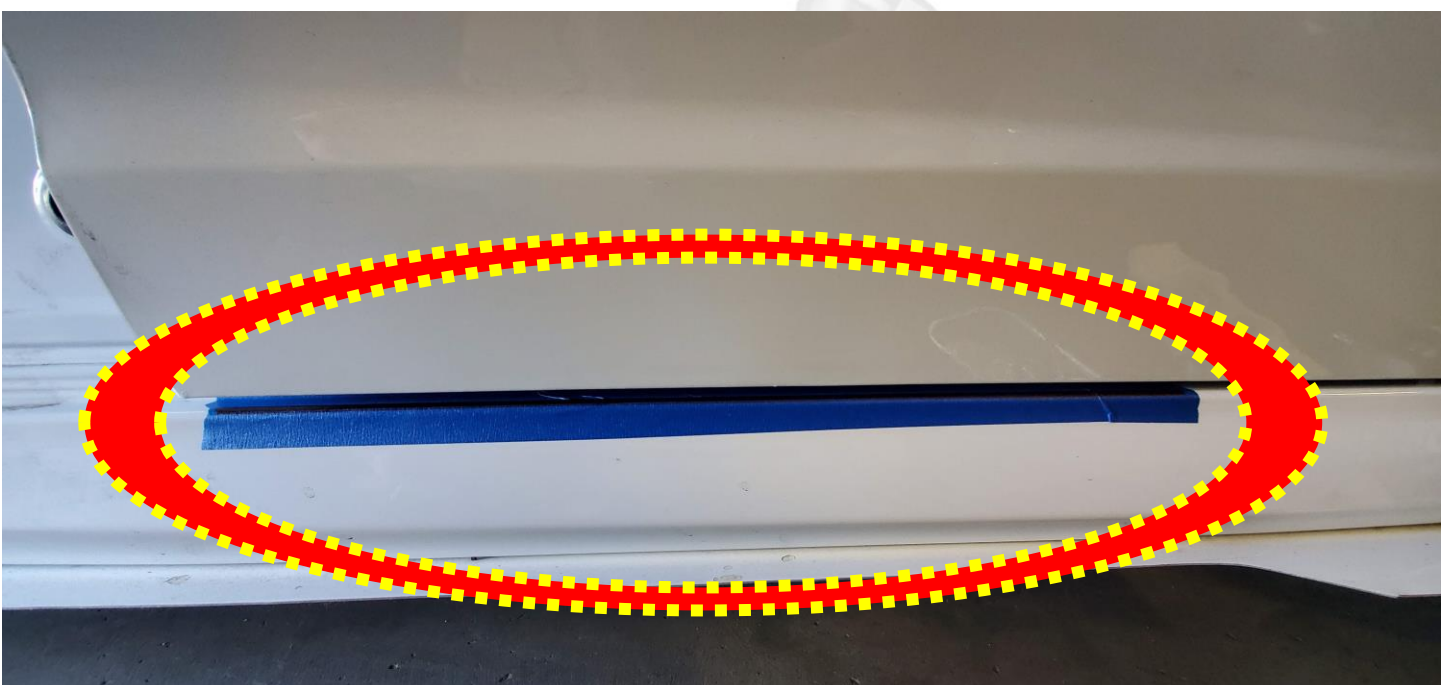
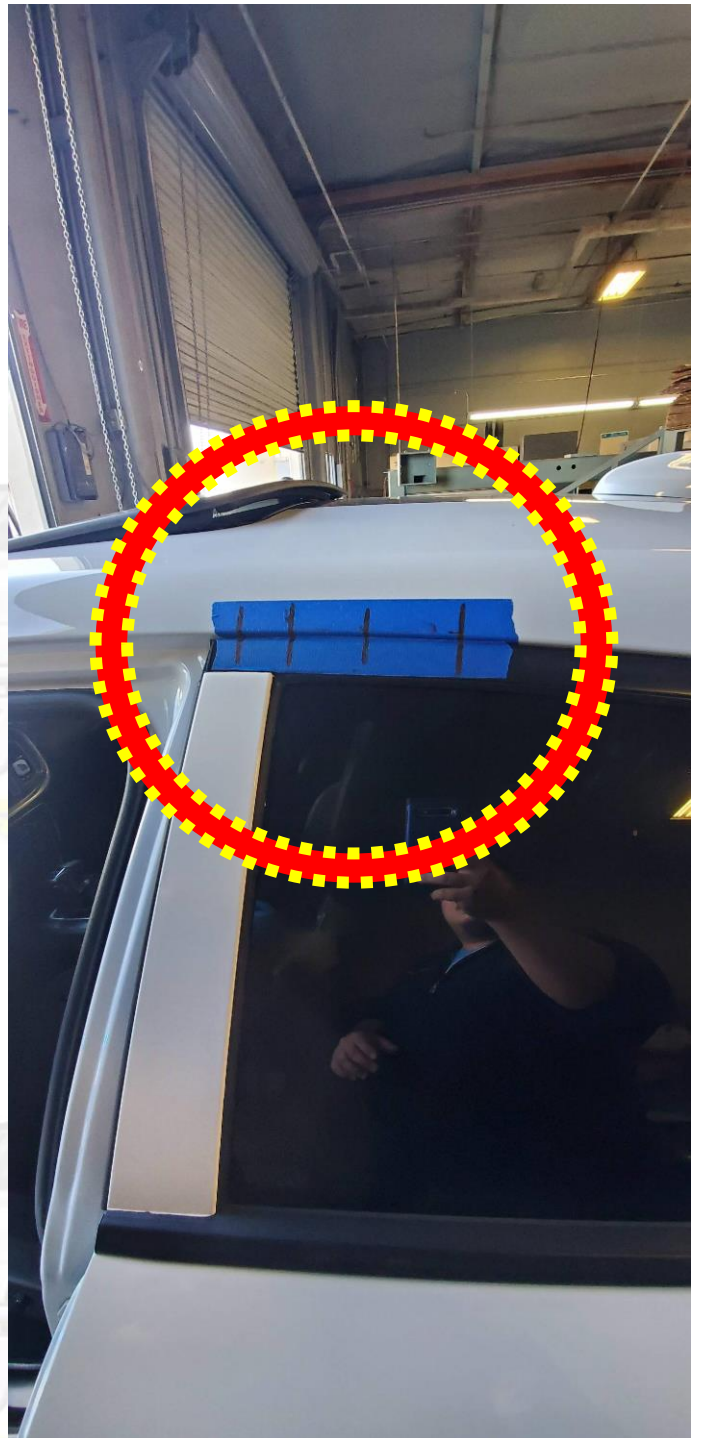
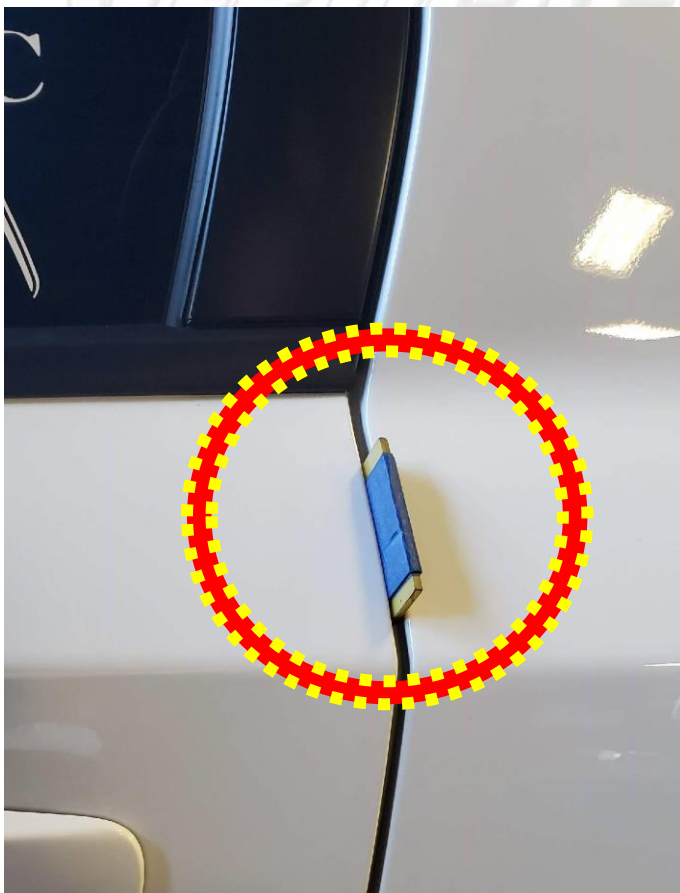
**OTHER TOOLS MAY BE NEEDED DEPENDING ON YOUR VEHICLE**



1) Disconnect the battery.

2) Apply painters' tape and make marks for realignment

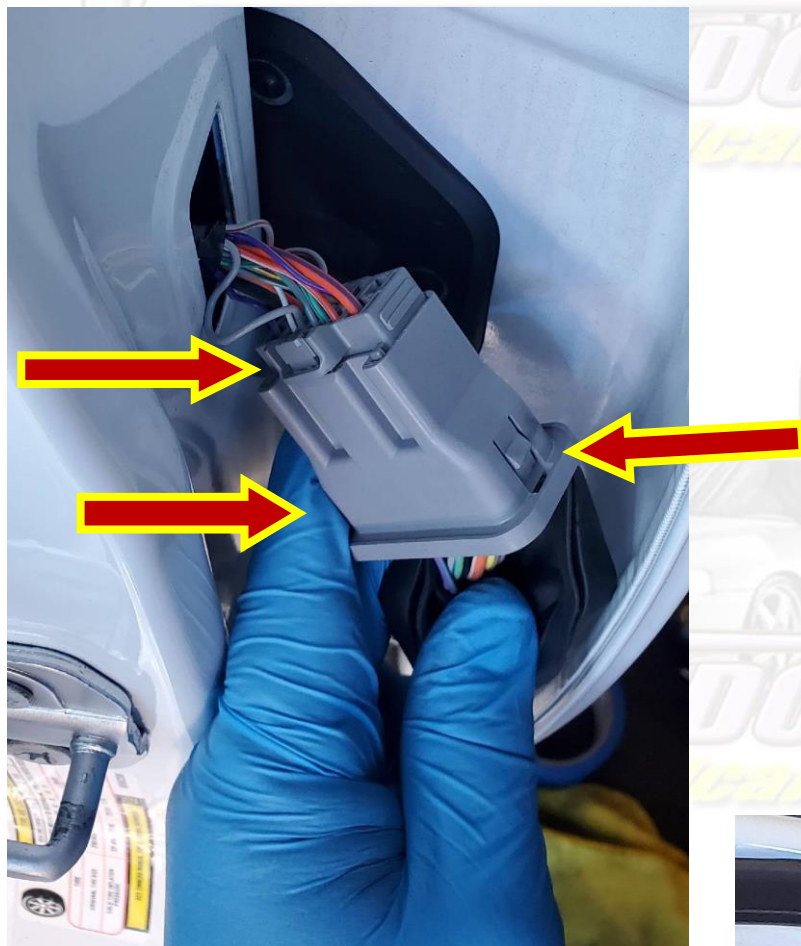
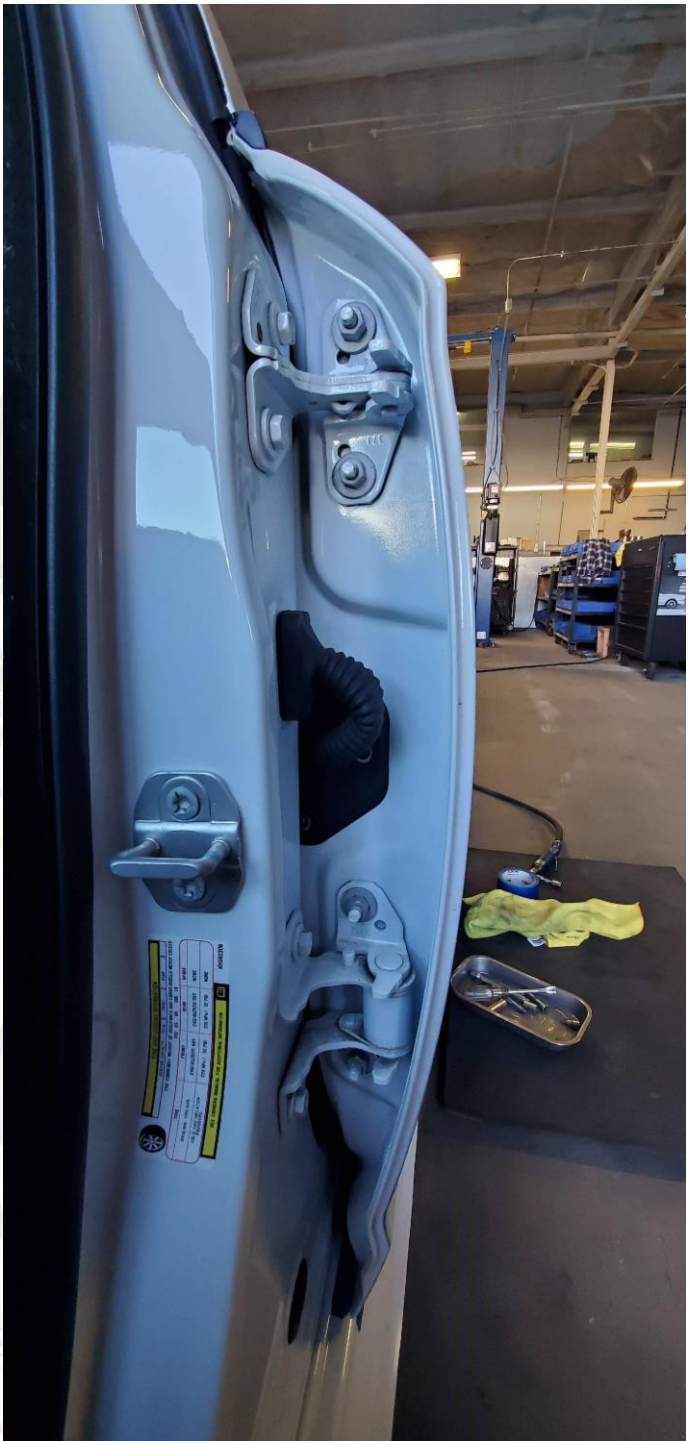
Make a spacer using a paint stick and painters' tape so that you can retain the gap at the back of the door





**3)** Open the front door for access and remove the nuts holding the hinges to the rear door.

**4)** Pull back the rubber boot covering the wiring, then using your fork tool depress the tabs on the top and bottom of the connector to remove. After removing, press the tab to disconnect both halves.



**5)** With a helper, open and remove the door. Place the door on a stand.





6) You will need to cut off the bottom stud on the top door hinge, then drill and tap 1 hole on each side in the door to complete the install.

7) Cut off the stud.

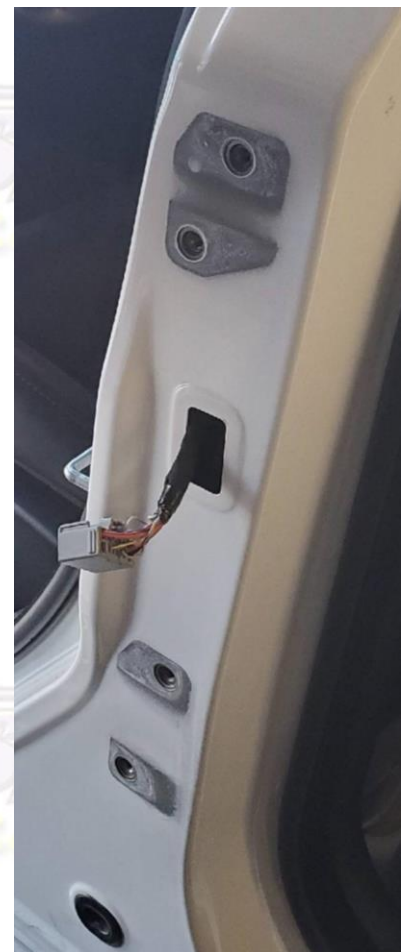
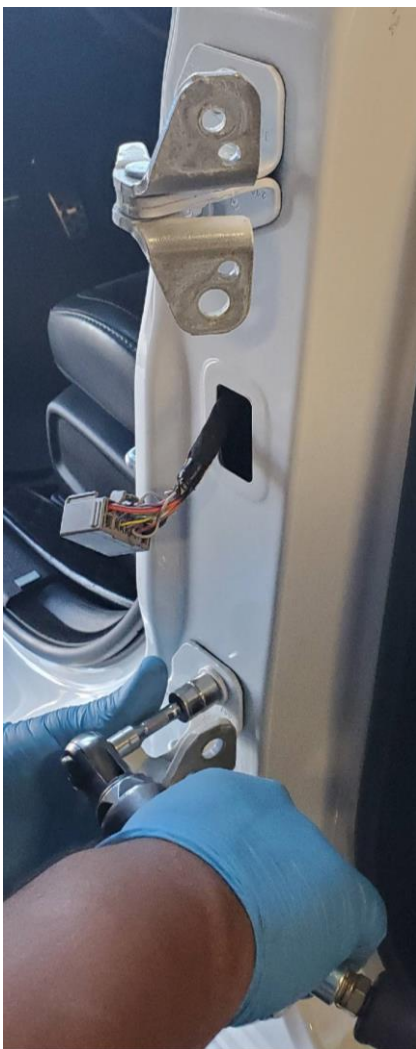




8) Grind it smooth, then touch up the paint.



9) Remove the stock hinges from the car.



**10)** You will want to “zero out” the hinge by turning the adjustment bolt. You want an equal number of threads in and out. You want the hinge to visually look straight.



**11)** Loosely bolt the hinge to the car using the OEM bolts. Adjust it so that it is visually straight up and down.

**12)** Replace the door on the car so that you can mark for the new hole that you have to drill. Replace the spacer at the back of the door and make sure the door is lined up perfectly with your marks. Use painters' tape to hold the door in place.





**13)** Once the door is aligned perfectly and the hinge is completely flush with the door and body, mark for the hole you need to drill. When you install the shock, it will push the bottom of the door out, so make your mark to the inside of the hole closer to the body of the car, that way you will have the necessary amount of adjustment.



**14)** After marking for the hole, remove the door with a helper and place it back on the stand. You will then drill and tap a new threaded hole where the mark you just made is. The thread size is M8 x 1.25

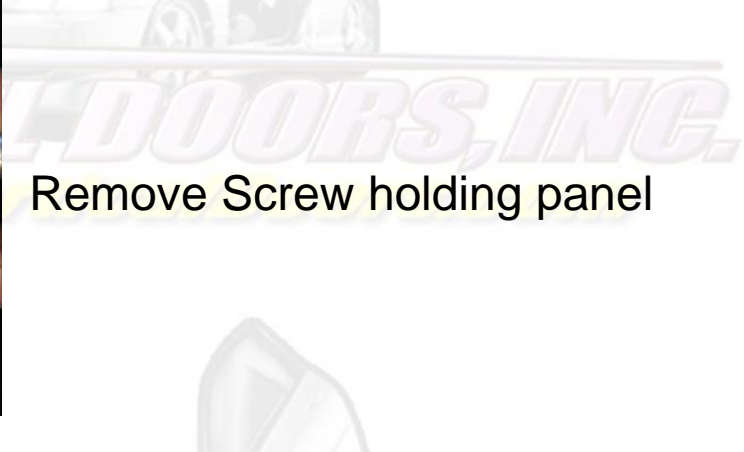




15) You will need to remove the door panel in order to remove wire hold downs so that you can gain extra wire slack.



Remove plastic covers using fork tool exposing screws underneath.



Remove Screw holding panel





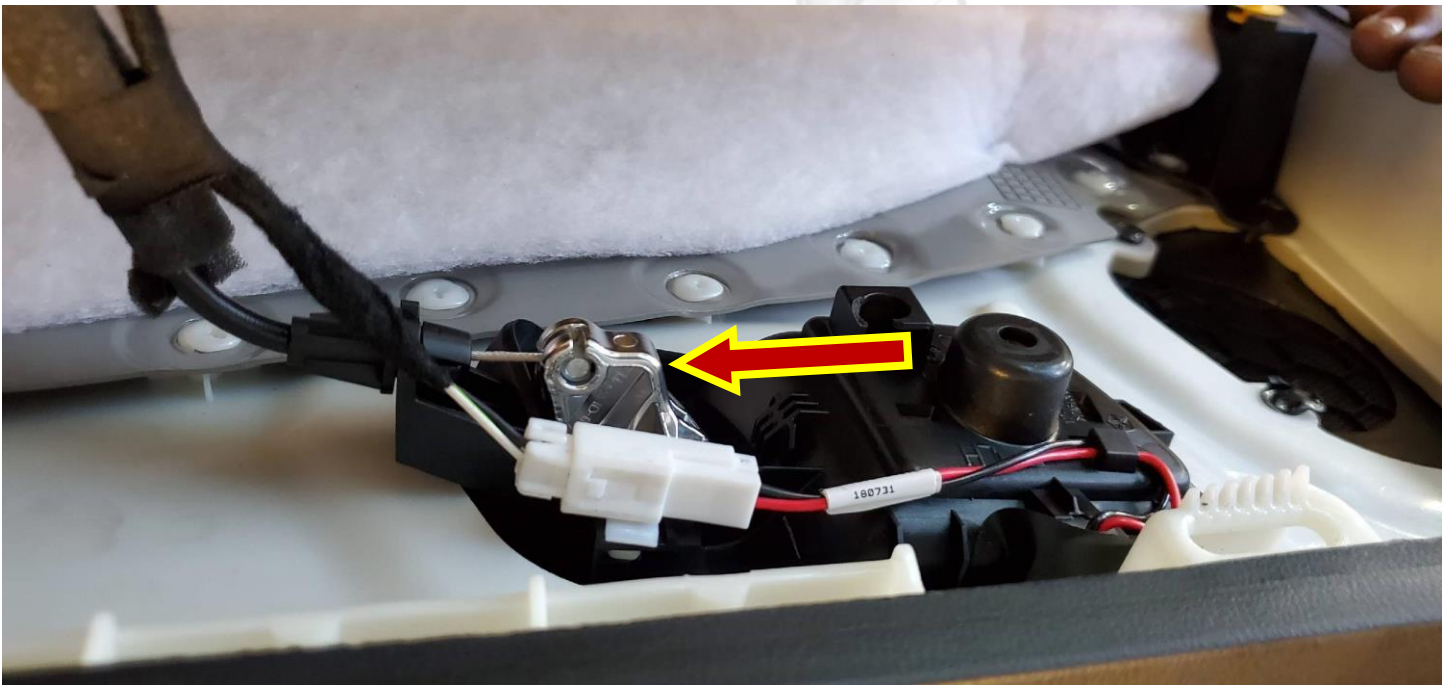


Remove Screw holding panel



Now you can remove the panel by pulling on it.

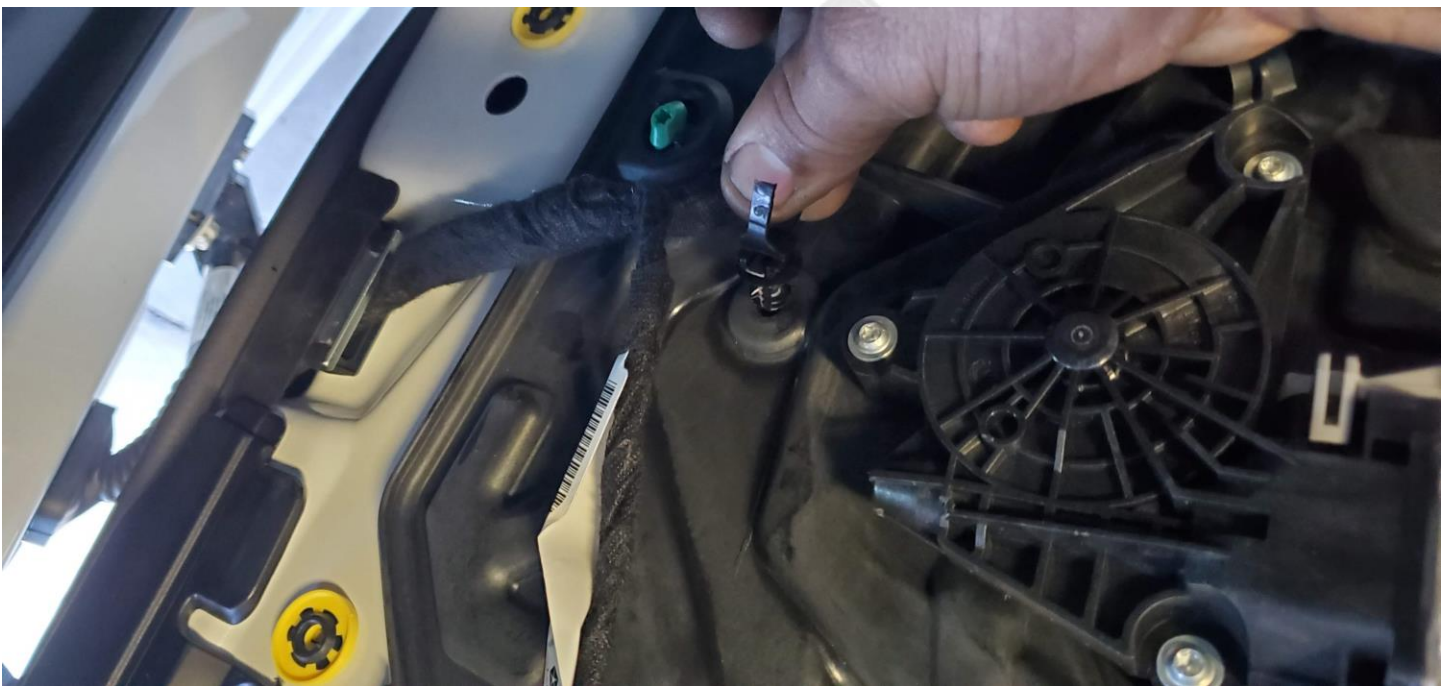
You will need to remove all electrical connections and the door release cable before you can fully remove the panel.







Remove the wire hold down by the front of the door and pull the harness tighter until you have an inch or so of extra slack at the front.

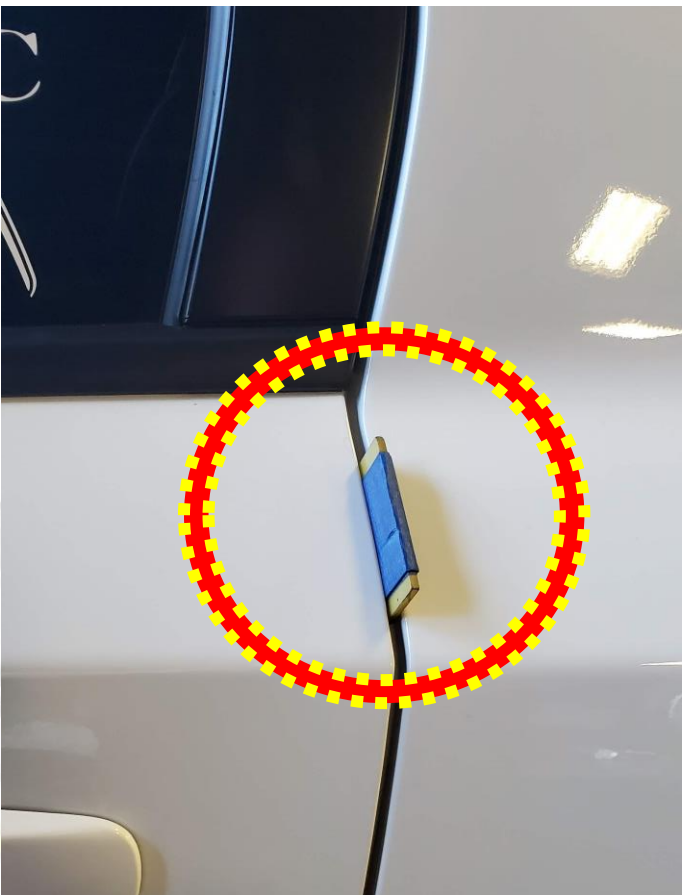


Replace the door Panel

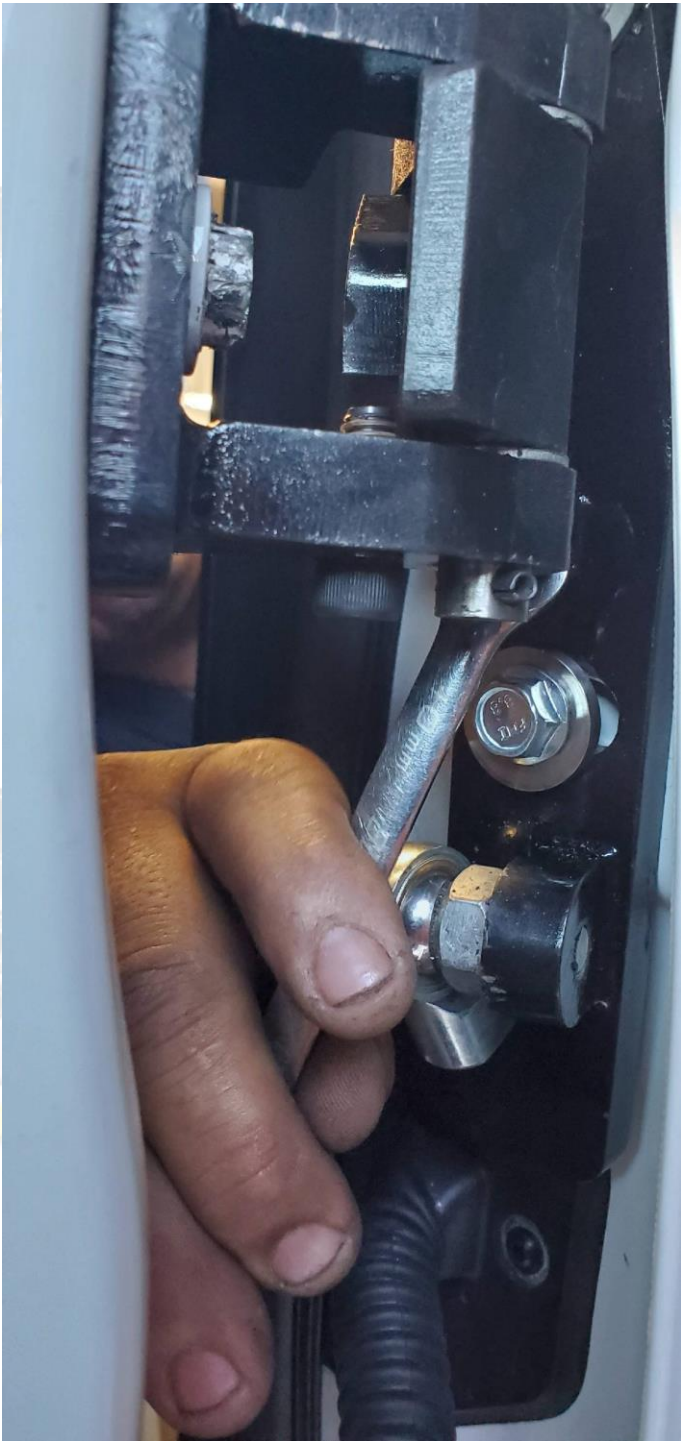
**16)** Return the door to the car. Be sure to re-install your spacer to maintain your gap at the back of the door. Align the door so that your marks are properly aligned and then tighten the bolts and nuts that hold the hinge. You may need to lift up on the front of the door while tightening to achieve proper alignment. Use the bolt and washer provided for the new hole you made.



Close the front door and verify the alignment between the two. They should be flush with each other.



**17)** Open the front door and prepare to open the rear door. Carefully open and support the weight of the door because it will probably drop when opening. Then you can adjust the adjustment bolt like in step 10 so that the door lines up perfectly with the latch when closing.

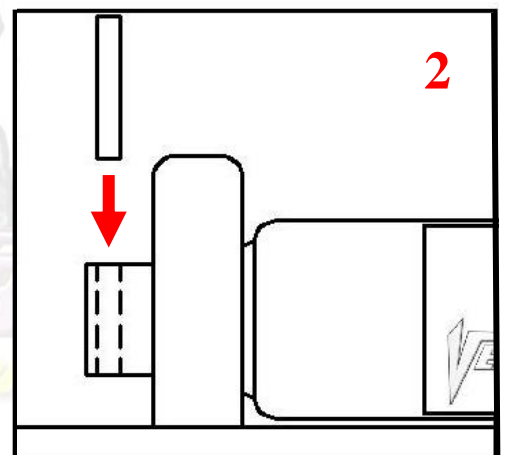
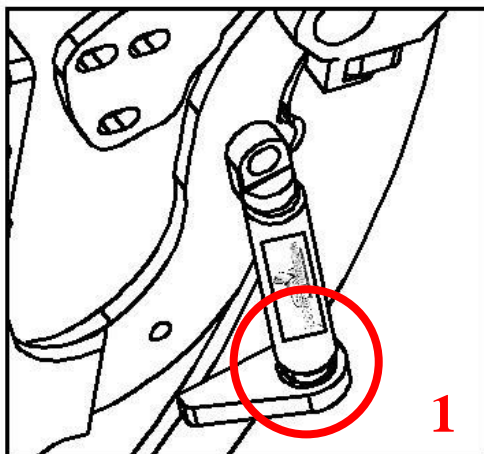




**18)** Install the shock bracket using the 2 remaining OEM bolts.



**19)** Install the shock. You must use Loctite on the threaded end of the shock. *Hint\* (You will need a helper to raise the door).* (1) (Slip the spherical rod mount into the spherical ball bearing. Then screw the shock into the swivel shock end that is pre-installed on the hinge. After the shock is installed secure it by installing the pin in the bottom shock end by tapping it in with a hammer (2)



Tip: Smear grease around the spherical shock bearing before installing the shock.



**WARNING! THE USE OF ANY TYPE PLYERS, PAINT OR FOREIGN MATERIALS ON THE SHOCK'S BODY OR SHAFT WILL VOID THE WARRANTY.**





Once you are satisfied with the alignment, that's it. You're done!

Follow the same steps for the other side.

## NOTES:



**Thank you for your purchase  
of the CHARGER / Chrysler 300  
2011-2020**

***VERTICAL DOORS INC. SYSTEM***

*Simply Uplifting*



**NOTE:**

Vertical Doors Inc. assumes no responsibility for any damages  
caused by improper installation