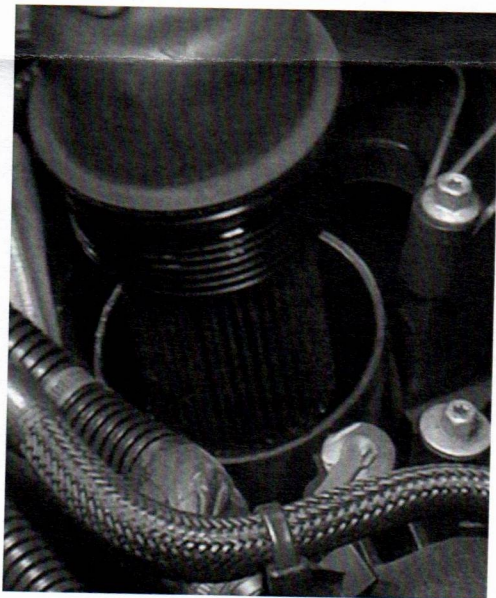


## MS-201-BK

**Note:** Read all instructions thoroughly prior to starting installation.

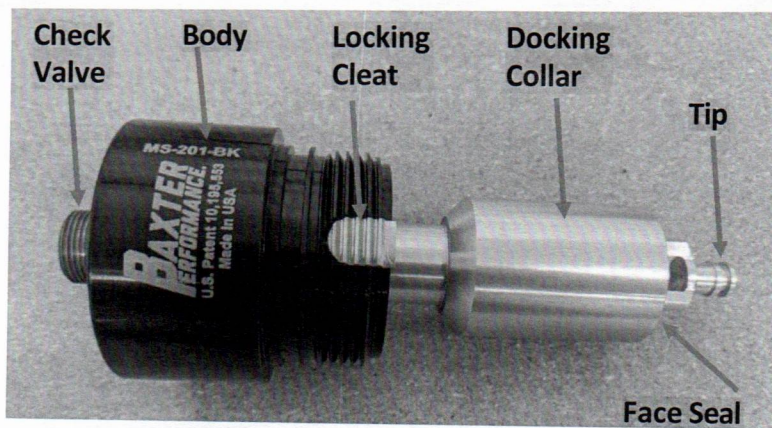
**Step 1:** Remove existing cartridge filter cap and filter.



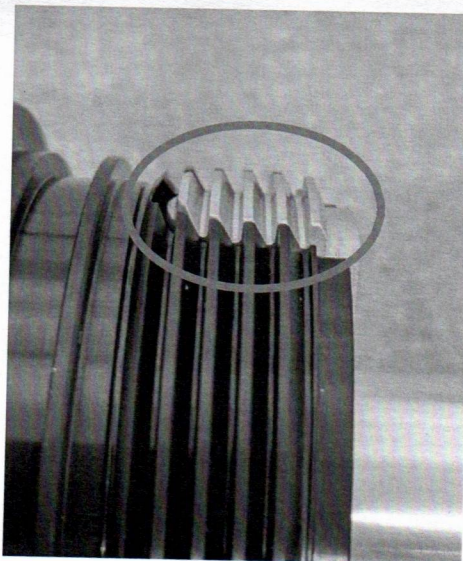
**Step 4:** Lubricate the 1/8" hex plug and install in unused port. (see note, page 2)



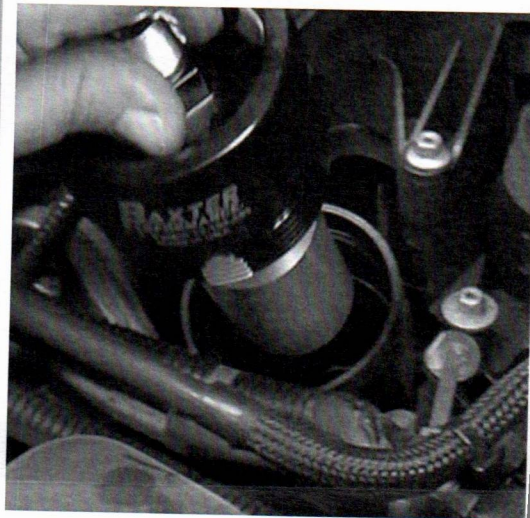
### Adapter Components



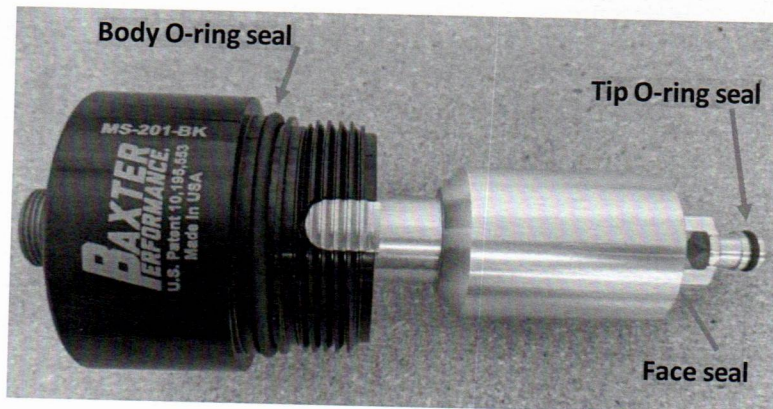
**Step 2:** Ensure that the threads on locking cleat are aligned with threads on adapter body prior to install. (as shown)



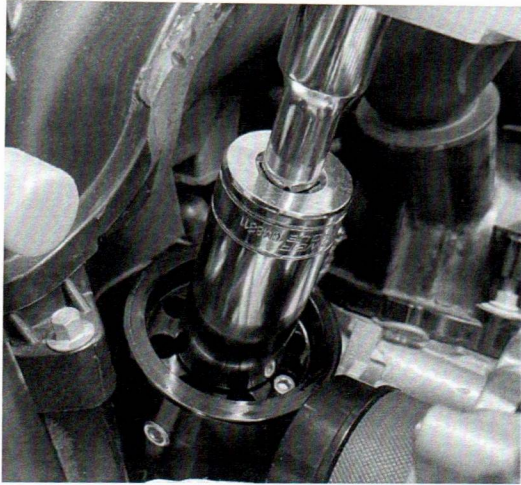
**Step 3:** Lubricate the face seal on the docking collar (body and tip O-rings will be installed later). Install the Adapter until it bottoms out, then back it out less than 180 degrees to expose an NPT port to be utilized for the Schrader valve. Note the orientation (the opposite one will be plugged with the included hex plug) Test fit spin-on oil filter for clearance. Remove filter and adapter.



**Step 5:** Install tip and body O-ring seals and lubricate with engine oil. (Verify Face seal is in place)



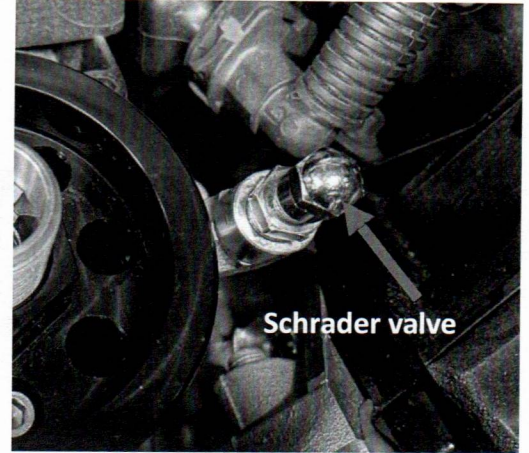
**Step 6:** Using 1" deep socket, rotate until fully bottomed out and back out to the previously determined orientation.



**Step 7:** Lock the adapter in place, by tightening the socket head cap screw with a 5/32 hex wrench.



**Step 8:** Lubricate threads on Schrader valve and install. (use optional 90-degree fitting using 1/2" wrench if needed for better access or clearance)



**Step 9:** Install oil filter with 22 X 1.5 threads, WIX 57502, Purolator PSL22500 or MOBIL1 M1-212 or equivalent. Make certain to lubricate oil filter gasket prior to installation. Start engine and run to operating temperature, check for leaks. Following engine shutdown, add oil to indicate halfway between full and low on dipstick if necessary.



**Note:** Thread seal tape may be used on hex plug, 90-degree fitting, and Schrader valve. Make certain tape is on threads only and not over end of fitting.

**Servicing instructions at Oil Change:** Prior to draining engine oil from oil pan, and oil filter removal, remove oil filler cap and apply minimum 30 PSI to the Schrader valve for at least three seconds. This will evacuate the oil retained in the oil filter and cooler. Then, remove oil filter and replace.

