



542 3rd St. Lake Elsinore, CA 92530

Tel: 951.245.8669; Fax 951.245.5481



CHARGER / 300 2011-2020

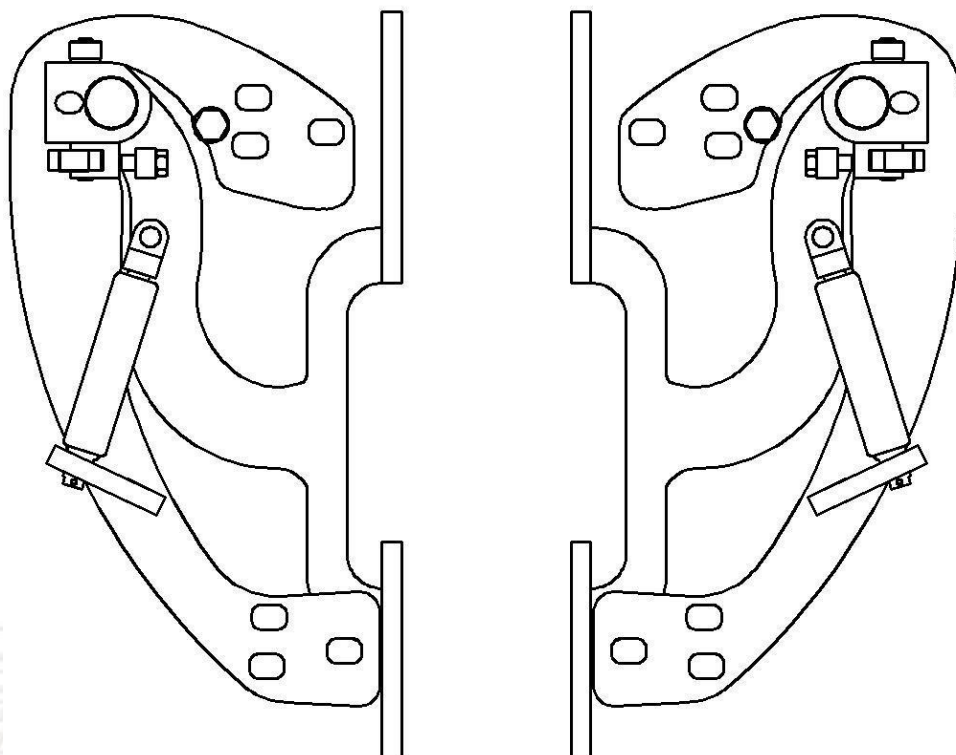
U.S. PATENTS

#6,808,223; #6,845,547; #7,140,075; #7,059,655

PATENTS AGGRESSIVELY ENFORCED!

**PLEASE CAREFULLY READ ALL INSTRUCTIONS BEFORE
ATTEMPTING TO INSTALL THIS PRODUCT.**

**FOR QUESTIONS PLEASE
CONTACT US AT (951) 245-8669**



THIS KIT INCLUDES:

- 2 PINS
- RIGHT AND LEFT HINGE ASSEMBLY
- 2 SHOCKS 660 PSI
- 2 SHOULDER BOLTS WITH WASHERS

TOOLS REQUIRED FOR INSTALLATION:

	➤ AIR RACHET, GRINDER AND CUTTER.
	➤ 7MM, 8MM, 10MM, 11MM, 13MM, SOCKETS AND EXTENSION.
	➤ FORK AND PHILLIP'S SCREW DRIVERS
	➤ SPACERS FOR THE DOOR GAP.
	➤ 3/16 ALLEN WRENCH
	➤ 1/4 TORX BIT
	➤ 9/16 WRENCH
	➤ LOCKTITE RED

OTHER TOOLS MAY BE NEEDED DEPENDING ON YOUR VEHICLE

**UNIVERSAL KITS MAY REQUIRE SOME CUTTING,
DRILLING AND WELDING.**

1) Disconnect the battery.

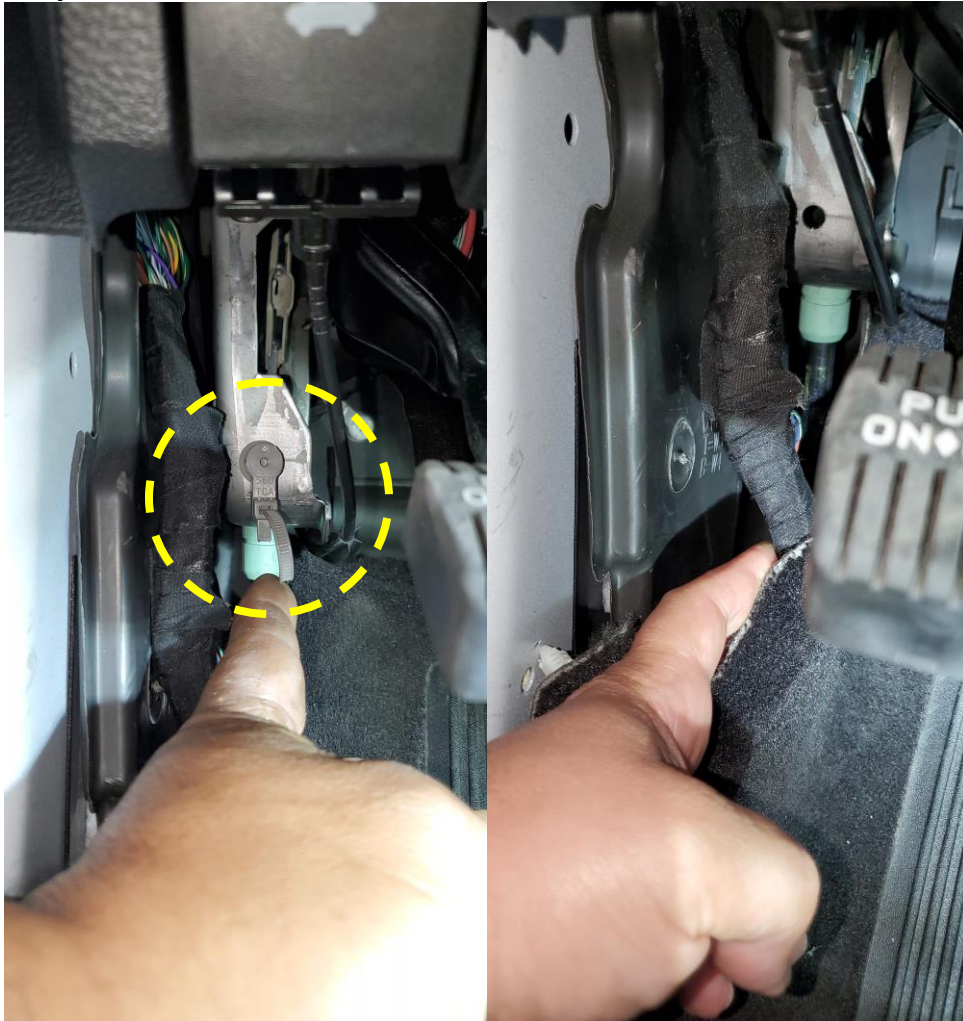
2) Remove fender. Remove all Plastic clips that hold the splash guard to fender, using the fork tool



To remove the fender, lift up the top of the fender toward you and then slip out the bottom end.

VERTICAL DOORS, INC.
VerticalDoors.com

3) Remove the interior trim covering the door sill and kick panel that way you can access the wiring harness that leads to the door. You will need to remove 1 hold down securing the harness in place



4) Unplug the door harness from the chassis. Un-clip the portion of the harness secured to the chassis so that you can pull the connector to the outside.



5) Locate the cover plates and gromets included with the kit to cover the hole in the chassis.

6) Wrap the portion of wiring leading up to the connector with cloth wire loom tape.

7) Use a 1.5 inch knock out tool or hole saw to make a hole in the end of the door for the wiring to pass through.



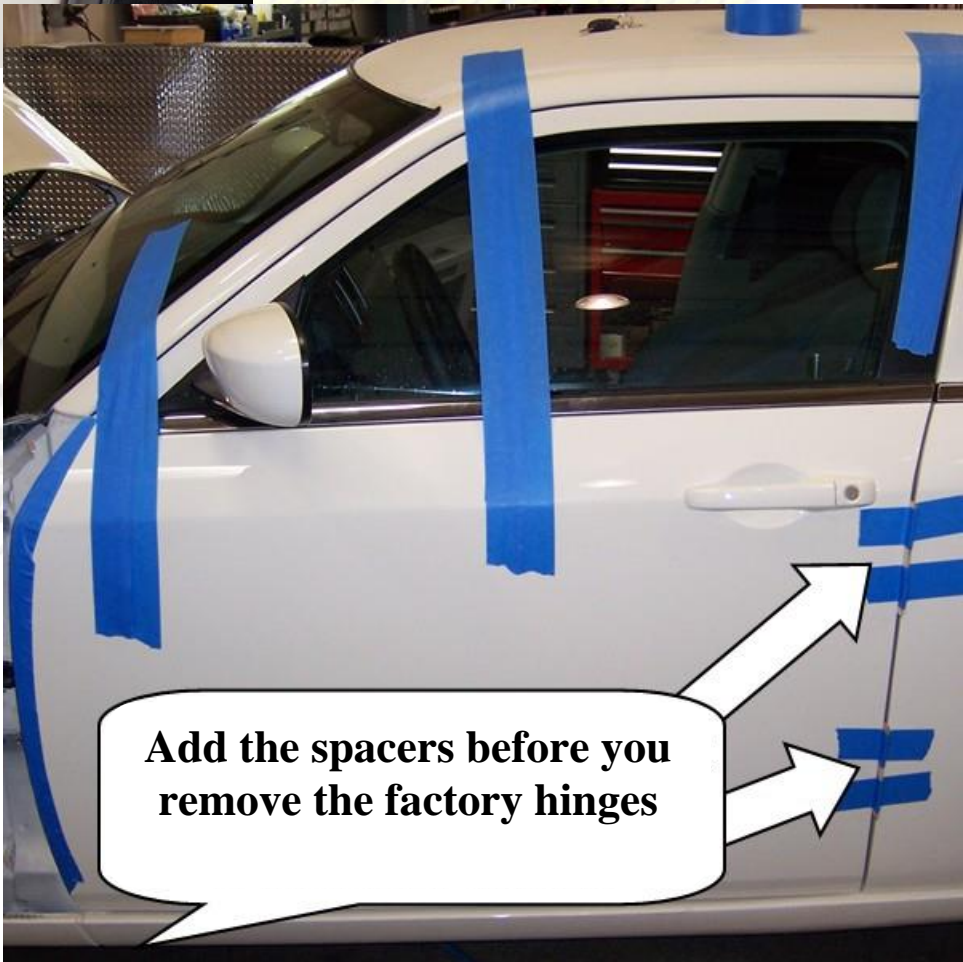
8) You will need to remove the door panel as well. You will insert the chassis portion of the harness through the hole you made in the end of the door. Plug the two connectors together inside the end of the door and secure out of the way of the window etc. with zip ties

9) Install the cover plate with grommet to cover the hole in the chassis with the screws provided. It should look like this on the chassis side when you are done.



10) Close door and use painters' tape to secure the door in preparation for factory hinge removal.

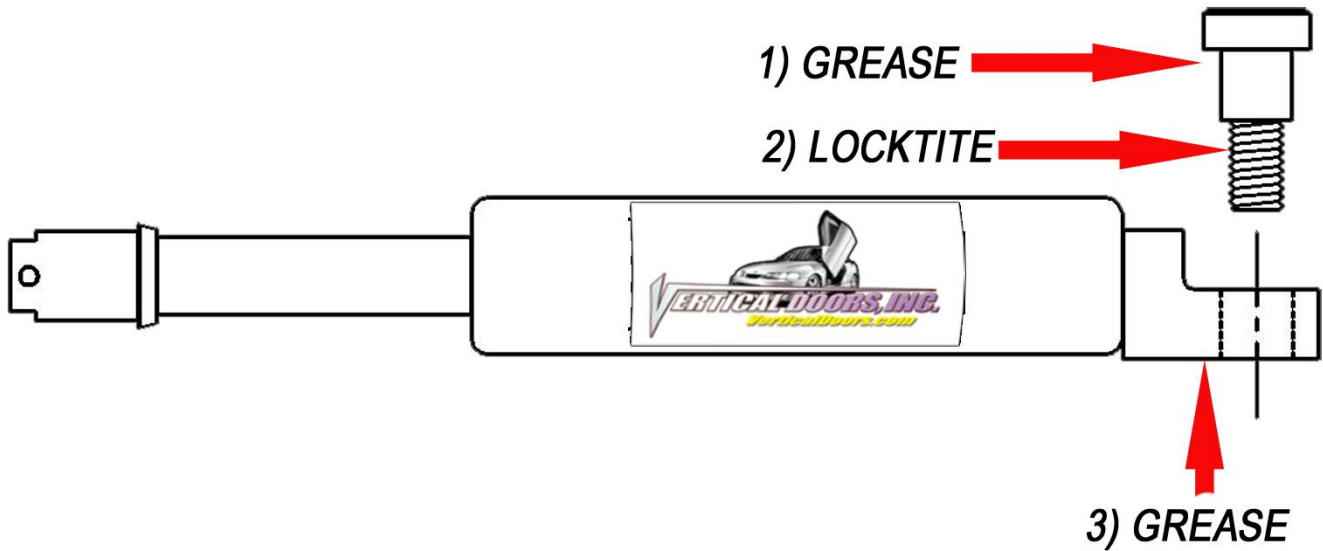
Hint (You can make your spacer out of paint sticks and about 8-10 turns of blue painters' tape)*



Before removing the factory hinges you **MUST** mark the factory location of the door on the vertical and horizontal planes. Also mark and measure the distance between the apron and the edge of the door by the top and bottom hinge.



11) Remove original door hinges and Install the New Vertical Doors Inc. System. You will use the OEM Nuts on the door side. Use the bolts and heavy-duty washers provided on the chassis side.

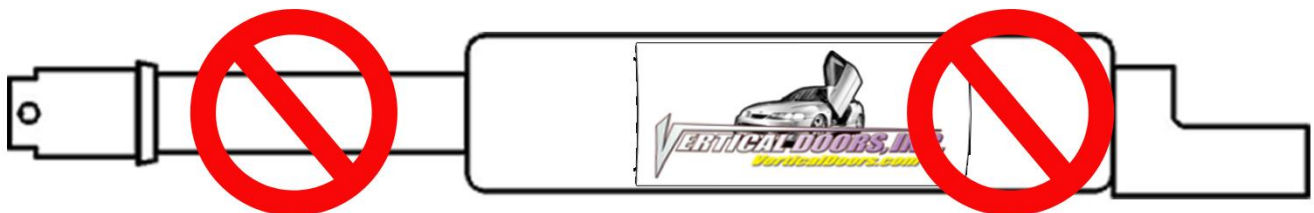


****IMPORTANT STEP: DO NOT SKIP THIS STEP. THIS STEP IS CRUCIAL IN YOUR INSTALLATION PROCESS, IF THIS STEP IS NOT COMPLETED WHEN INSTALLING THE VERTICAL DOOR KIT; ALL WARRANTIES ARE VOIDED, AND MAY CAUSE FUTURE PROBLEMS WITH YOUR VERTICAL DOOR SYSTEM.***

1ST, make sure you put grease on the body of shoulder bolt where the arrow is pointing.

2ND, make sure you put red Locktite, where the arrow is pointing, on thread of shoulder bolt.

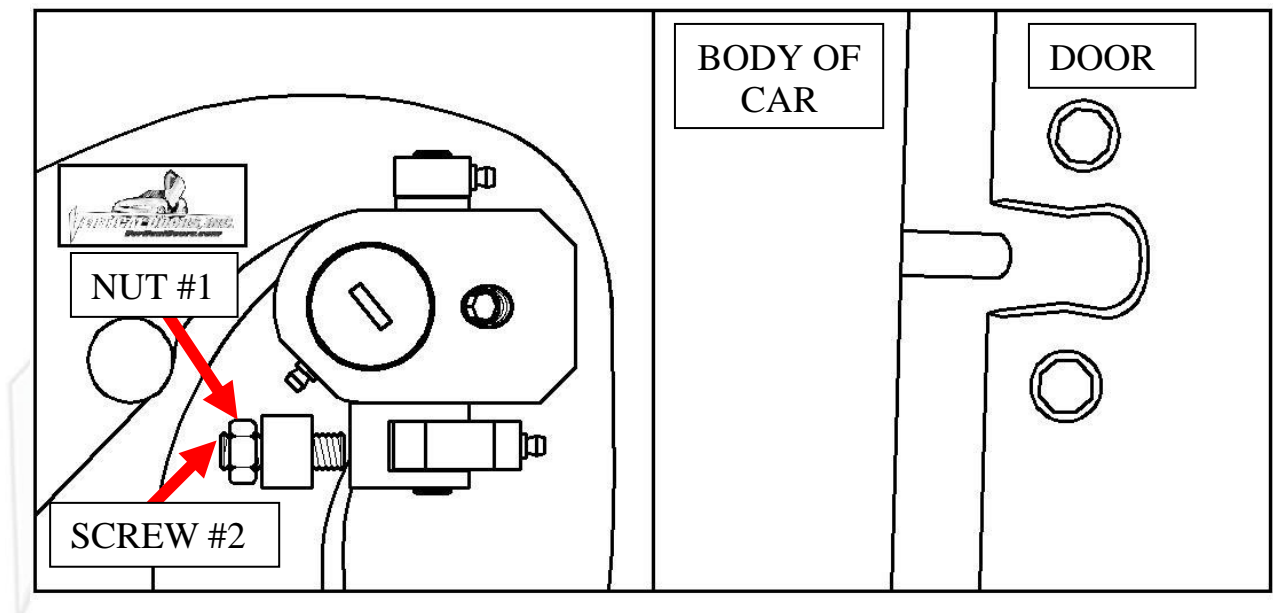
3RD, make sure you put grease on the bottom side of the shock end.



WARNING! THE USE OF ANY TYPE PLYERS, PAINT OR FOREING MATERIALS ON THE SHOCK'S BODY OR SHAFT WILL VOID THE WARRANTY.

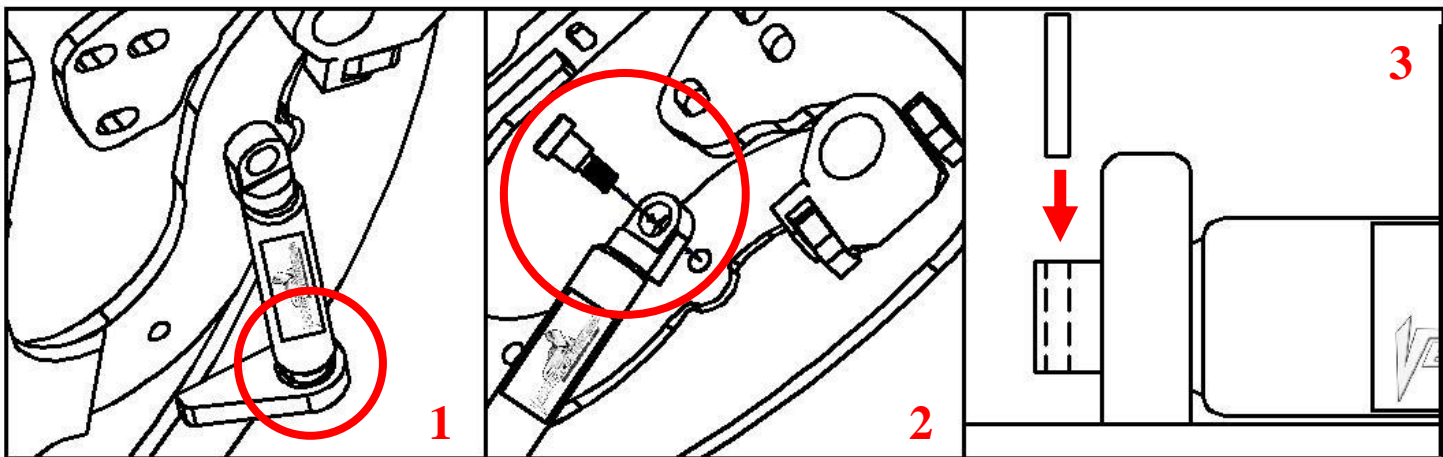
VERTICAL DOORS, INC.
VerticalDoors.com

12) Once hinge is locked in place, break nut #1 then turn Allen set screw #2 on fig until it hits the block then open the door and continue to adjust until the door matches with the striker, open and close door making sure it closes like factory.



Hint(leave #1 nut loose until shock is installed Allen set screw will have to be re-adjusted after shock is installed.*

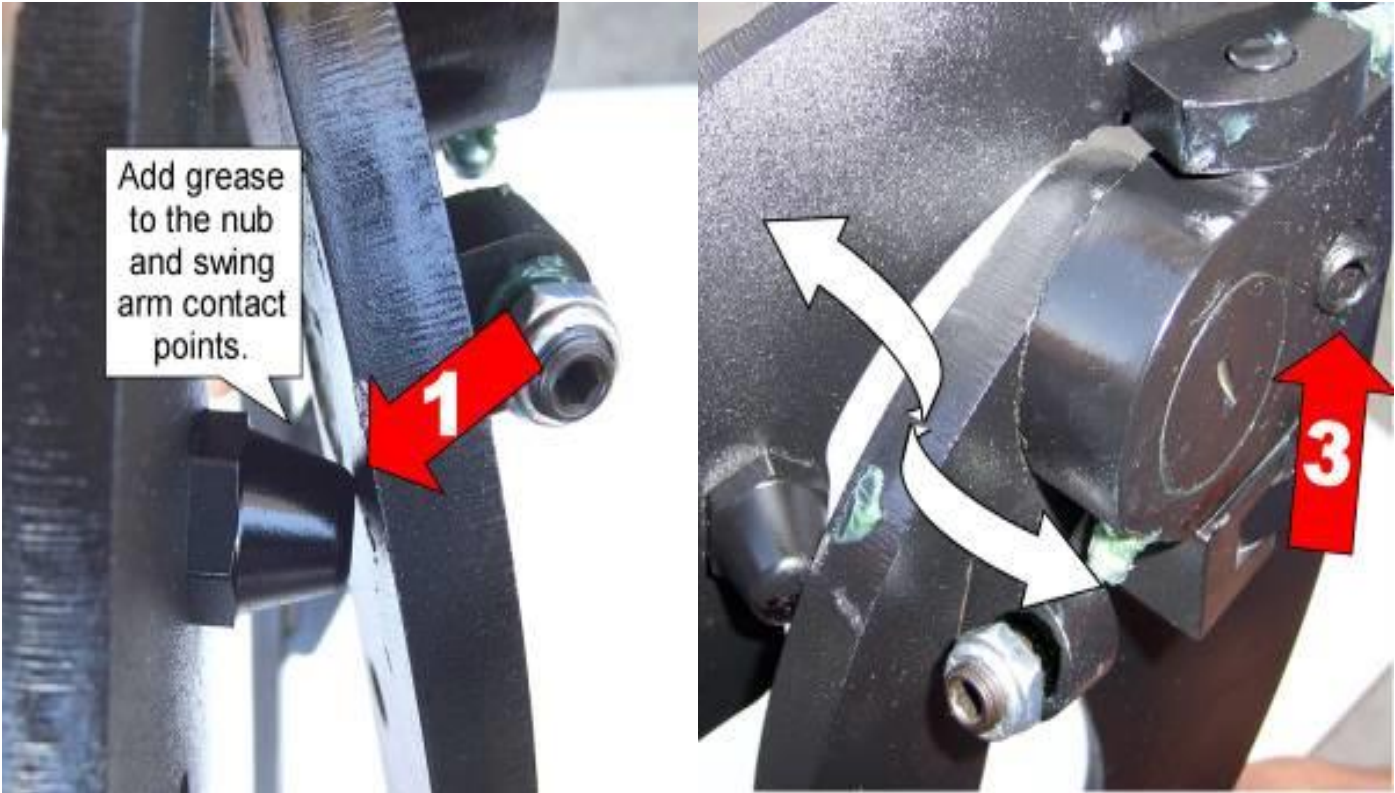
13) Install the shock.



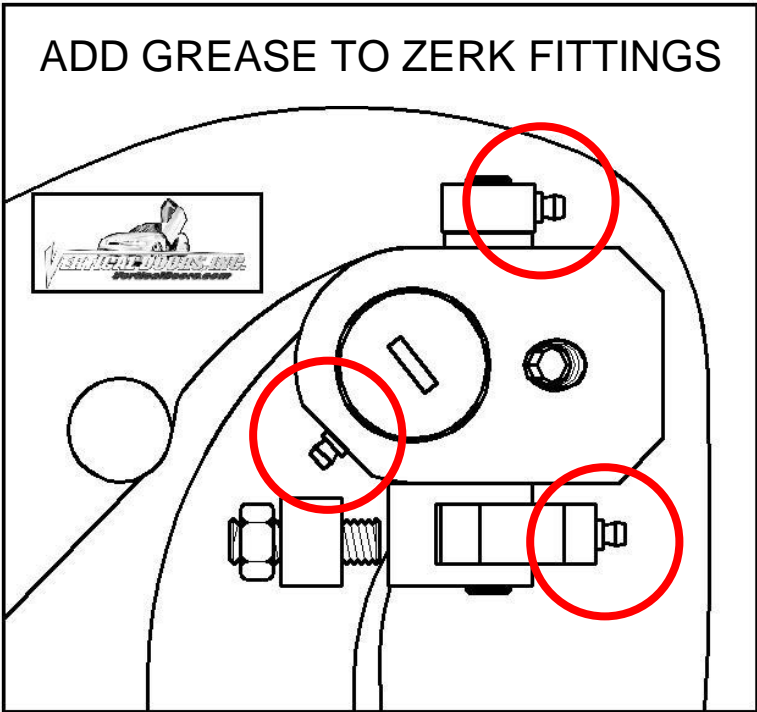
Hint (You will need a helper to raise the door). (Slip the spherical rod mount into the spherical ball bearing (1). Using a 1/4 Allen wrench, tighten the screw into the swing arm (2). After the shock is installed secure it by installing the pin in the bottom shock end (3).*

VERTICAL DOORS, INC.
VerticalDoors.com

14) After shock is installed re-install door panel and lift the door. Adjust door opening screw #3 clockwise until distance between nub and swing arm is enough so that the swing arm moves up and down freely.



Hint (Fine tune the Allen set screw (#2) to realigned striker with door. After the door is aligned, test door by opening and closing, lifting and lowering door several times.*



Note: Do not install fender until the adjustment of the door is accurate, and the set screw is tightly secure. Also make sure everything is tight, adjustment is set and everything is Locktite.

15) Cut the inner lip of your fender to make room for the new Vertical Doors hinge.



16) Lift the door and Replace the fender by reversing step 2.

Hint(Make sure the electrical wires don't get pinched enough to damage wires)*

17) For the other side just follow steps 1-12.

NOTES:

**Thank you for your purchase
of the CHARGER / Chrysler 300
2011-2020**

VERTICAL DOORS INC. SYSTEM

Simply Uplifting



NOTE:

Vertical Doors Inc. assumes no responsibility for any damages
caused by improper installation