



MATTE BLACK FUEL DOOR

(2008-2014 DODGE CHALLENGER)

INSTALLATION INSTRUCTIONS

CONTENTS

(1) Fuel Door
(1) Gasket

TOOLS REQUIRED

Plastic Pry Tool
Exterior Detailer
Microfiber Cloth

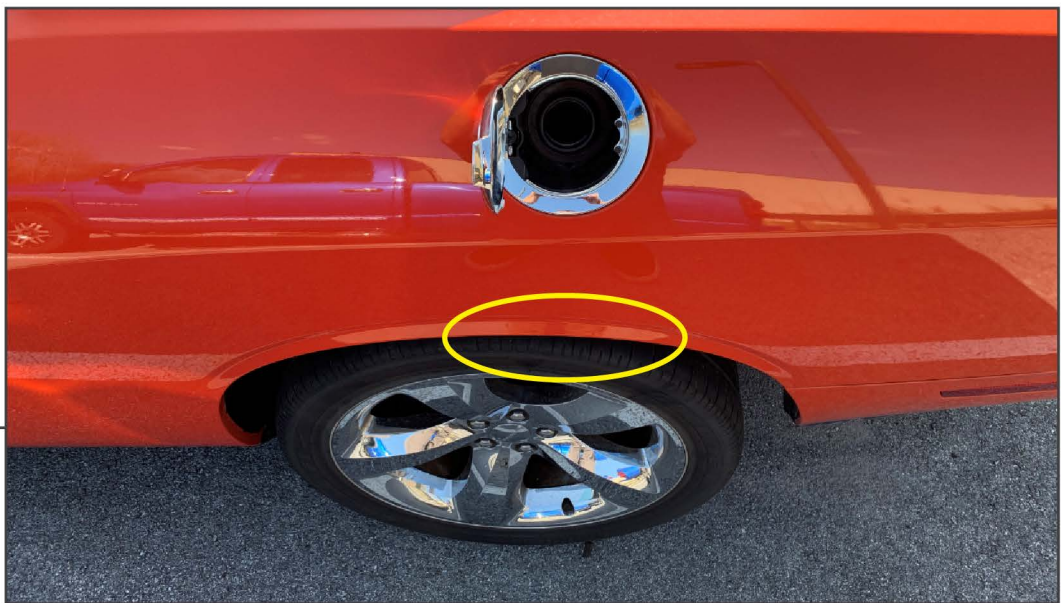
SKU # CH8560

STEP 1

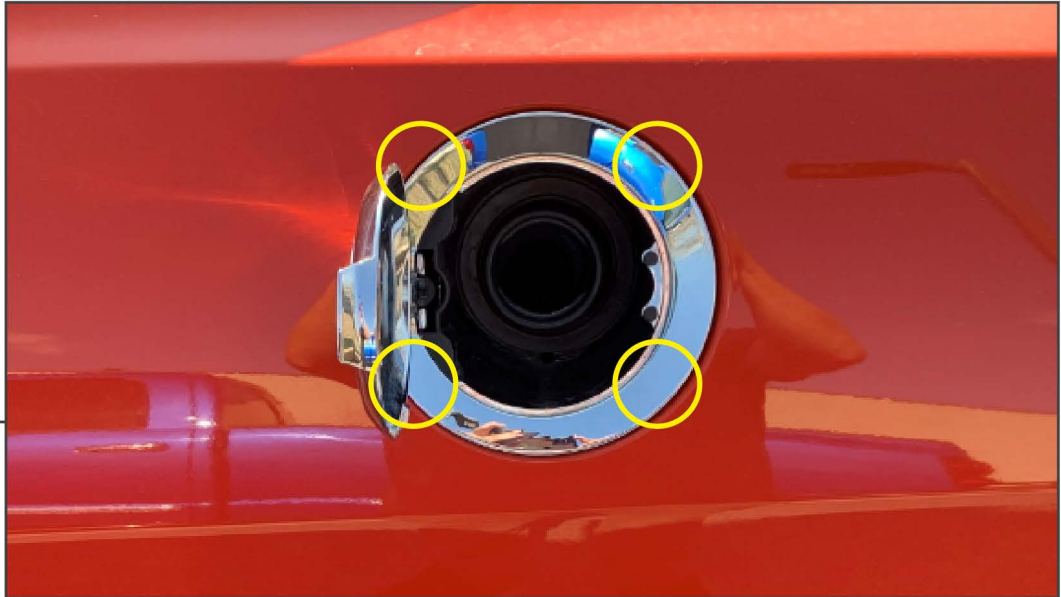


Remove the gas cap and gas cap tether from the vehicle and set aside.

STEP 2



Using a plastic pry tool, carefully pry the plastic fender liner from the upper edge of the quarter panel. Pry back enough material to reach in between the quarter panel and the fender liner.



STEP 3

Reach towards the fuel door and press in (4) plastic tabs along the edges of the fuel door. Press each tab and slightly pull the door outward. Once all tabs are pressed, carefully pull the door away from the vehicle.

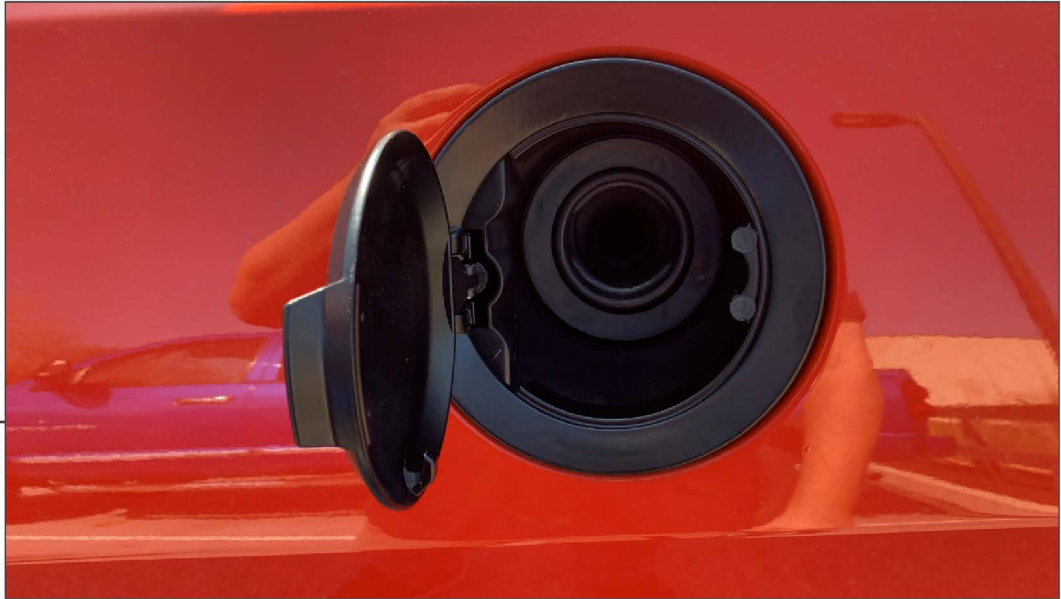
Note: The fuel filler neck gasket attached to the door is holding the assembly into place. Navigate the door around the filler neck during removal.



STEP 4

With the fuel door removed, clean any dirt and debris from the fuel door area.

Note: Re-install the fuel cap for this step to prevent any detailer from entering the fuel tank.



STEP 5

Install the new fuel door onto the vehicle. Navigate the gasket onto the fuel filler neck, then push the fuel door into the quarter panel. The door assembly will click into place when fully seated.



STEP 6

Re-install the fuel cap and fuel cap tether to the new fuel door.

Installation is now complete.