



HELLCAT STYLE REAR SPOILER

(2008-2020 CHALLENGER)

INSTALLATION INSTRUCTIONS

CONTENTS

- (1) Spoiler
- (5) Alignment Strips
- (2) Phillips Screws
- (2) Flat Washers
- (3) Alignment Pins
- (3) Plastic Grommets
- (2) Rubber Pads

TOOLS REQUIRED

- 10mm Socket
- Ratchet
- Plastic Pry Tool
- Phillips Screwdriver
- Drill
- 1/8", 5/16", And 15/32" Drill Bits
- Pliers
- Masking Tape
- Exterior Detailer/Isopropyl
- Alcohol

SKU #CH5155



STEP 1

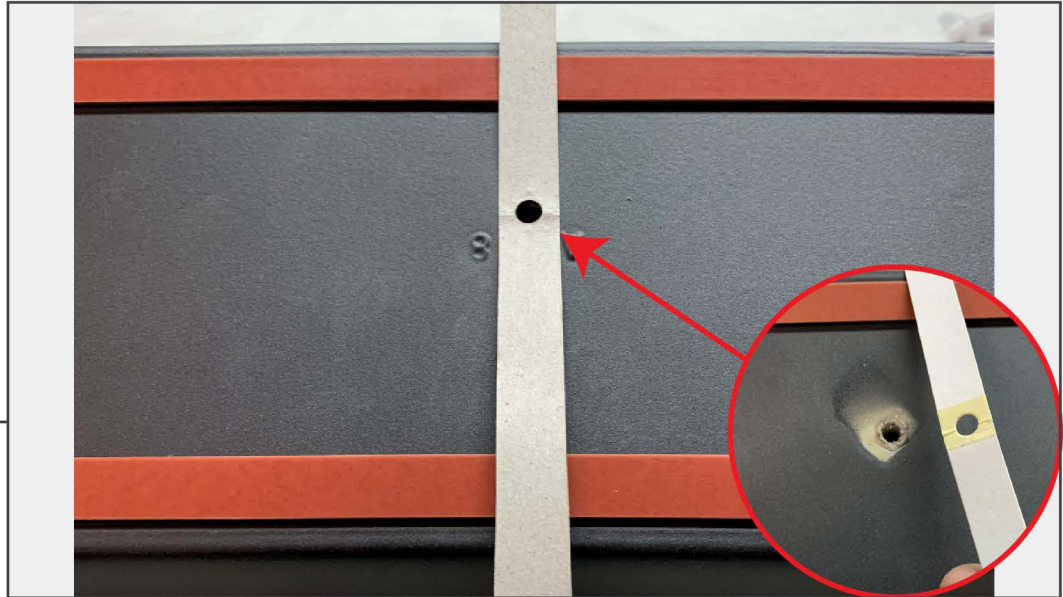
Remove the (2) 10mm nuts securing the spoiler to the trunk.



STEP 2

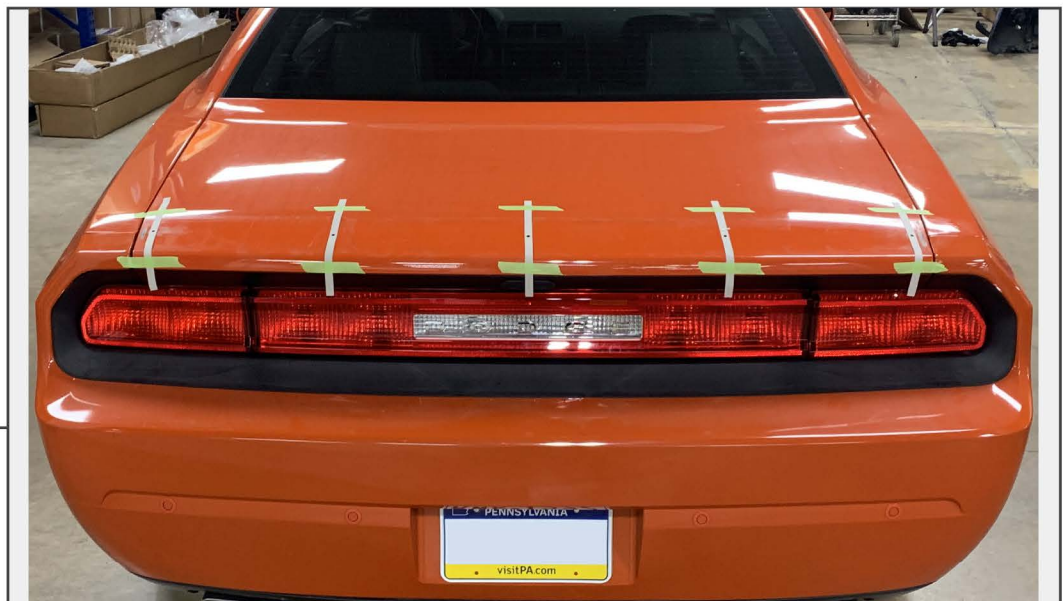
Lower the trunk lid. Using a plastic pry tool, pry around the spoiler to loosen the double sided tape. Remove the spoiler from the vehicle. Remove any and all tape residue. Ensure the paint surface is clean prior to continuing to Step 3.

STEP 3

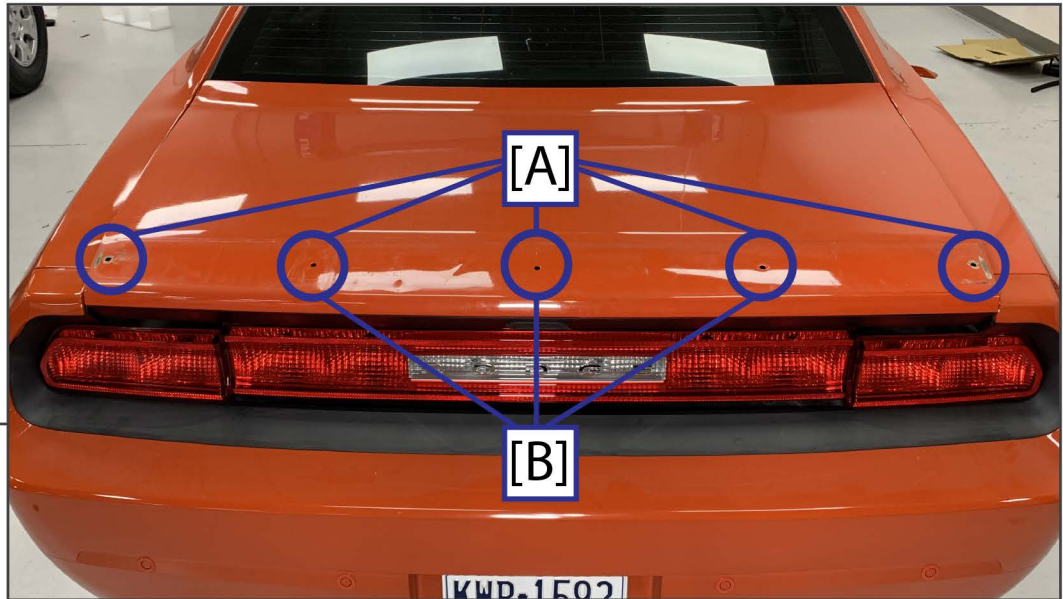


Adhere the provided (5) Alignment Strips to the spoiler. Peel the adhesive backing off the middle of the strip, then align the hole in the strip with the hole in the spoiler.

STEP 4



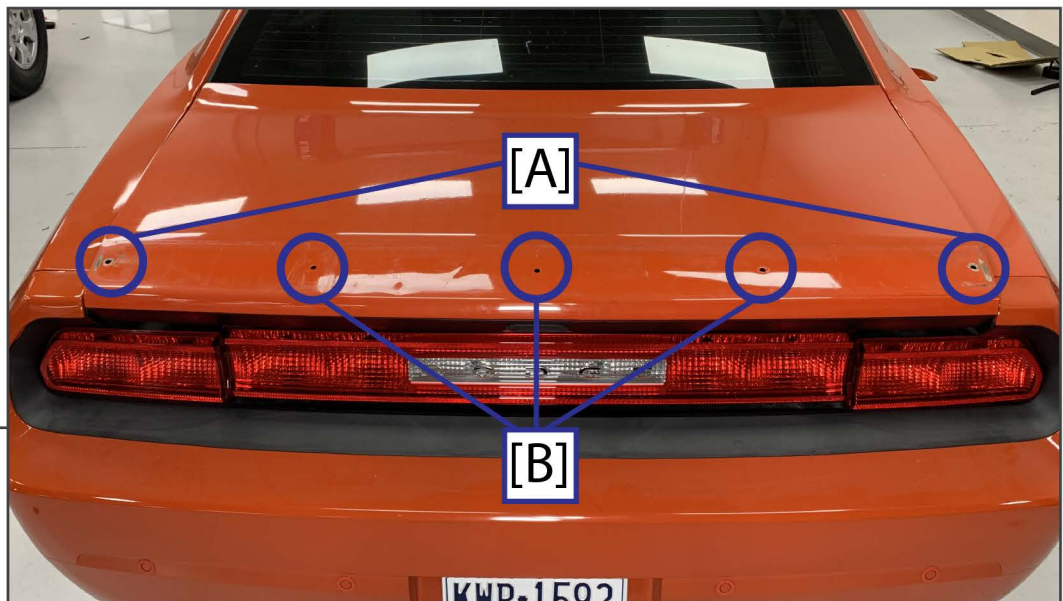
Align the middle strip with the trunk release button on the spoiler. Using masking tape, adhere the (5) alignment strips to the trunk lid to secure them in place. Lift the spoiler away from the vehicle.



STEP 5

Drill (5) pilot holes using a 1/8" drill bit [A].

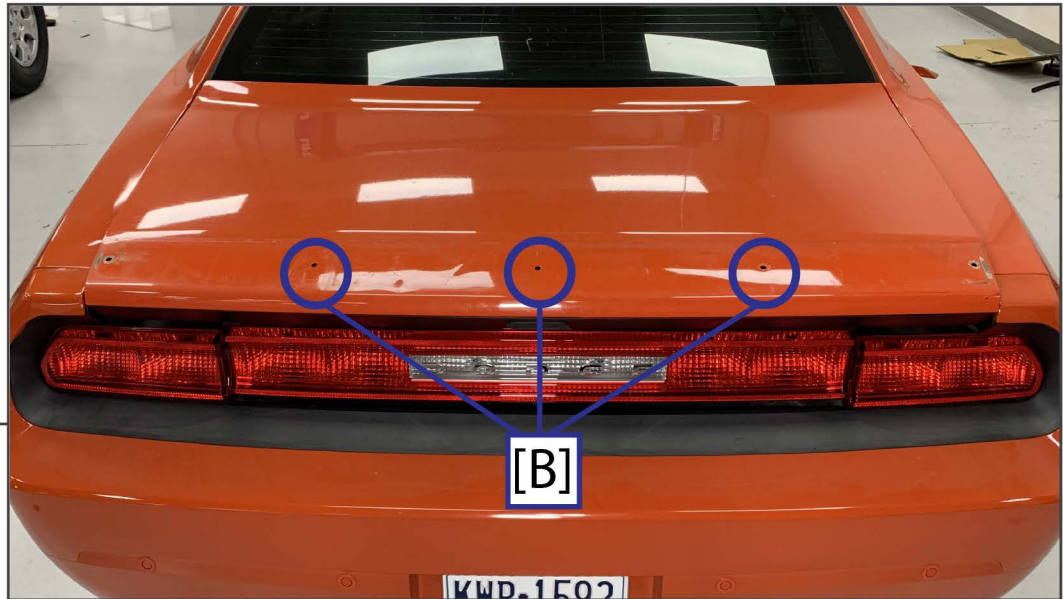
If replacing OE-Spoiler, drill (3) pilot holes using a 1/8" drill bit [B].



STEP 6

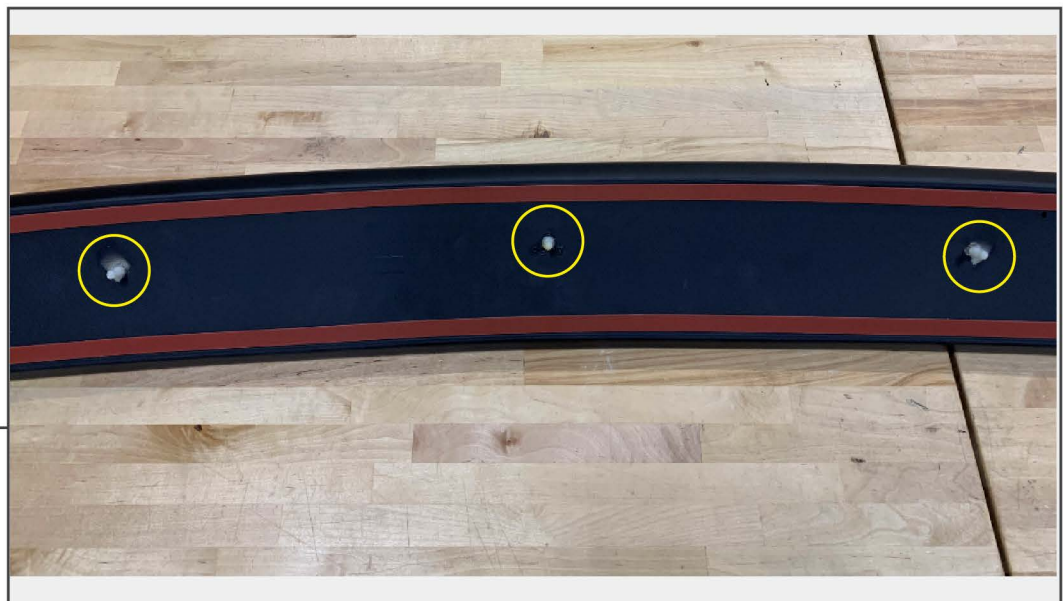
Using a 5/16" drill bit, drill holes indicated [A].

Using a 15/32" drill bit, drill holes indicated [B].



STEP 7

Insert (3) Plastic Grommets into the drilled holes indicated [B]



STEP 8

Install (3) Alignment Pins into the spoiler. Thread them in by hand and snug tight with pliers.



STEP 9

Peel back the double sided tape underneath the spoiler, then install the spoiler onto the trunk lid. Place the (3) spoiler alignment pins into the (3) plastic grommets installed in the trunk lid. Press firmly along the spoiler to adhere the tape to the trunk lid.



STEP 10

Install the (2) provided Phillips screws into the spoiler through the ends of the trunk lid.

Installation is now complete.