

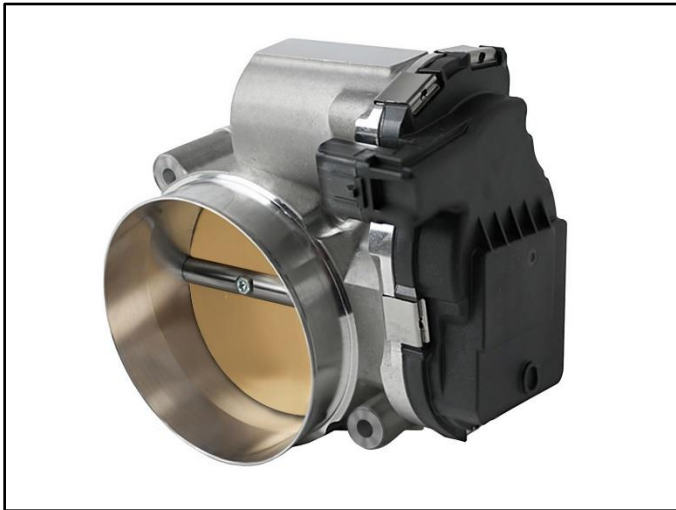


advanced FLOW engineering

Instruction Manual P/N: 46-39107

90mm Throttle Body for Dodge V8-5.7L/6.4L HEMI

Chrysler 300	2013-2023	Jeep Grand Wagoneer	2022-2024
Dodge Charger	2013-2023	Jeep Wrangler 392	2021-2022
Dodge Challenger	2013-2023	Ram 1500	2013-2024
Dodge Durango	2014-2024	Ram 1500 Classic	2019-2022
Jeep Grand Cherokee	2014-2024	Ram 2500	2013-2024
Jeep Grand Cherokee L	2021-2024	Ram 3500	2013-2024



Qty.	Part Description
1	90mm Throttle Body
1	Throttle Body Adaptor
1	Throttle Body Gasket

- Please read the entire instruction manual before proceeding.
- Ensure all components listed are present.
- For technical support please call 951-493-7185.
- Ensure you have all necessary tools before proceeding.
- Ensure that your vehicle is cooled off before proceeding.
- Retain factory parts for future use.

1. Disconnect the battery.
2. Remove the engine cover (if applicable).
3. Remove the air intake tube from the vehicle.
4. Disconnect the electrical connector from the factory throttle body.
5. Remove the four (4) screws retaining the throttle body. Save for reinstallation.
6. Remove the factory throttle body.
7. Clean the gasket surface at the intake manifold and replace the factory gasket if necessary (not supplied).
8. Install the supplied aFe Throttle Body Adaptor, the supplied gasket and the supplied aFe 90mm Throttle Body onto the intake manifold using four (4) factory screws removed in Step 5. Tighten to factory specifications (5nm or 44 in. lbs.).
9. Connect the electrical connector to the aFe 90mm Throttle Body.
10. Install the air intake tube back into the vehicle.
11. Reinstall the engine cover (if applicable).
12. Reconnect the battery.
13. Installation is now complete.

NOTE: Check all screws, clamps, and connectors are secure after 100-200 miles