

**SHOP BY VEHICLE**

0

INSTALL INSTRUCTIONS FOR CAI-75-5196

**PRINT**

BEFORE YOU START

Note: This intake kit may not fit with the following Aftermarket Parts installed:

- Body Lift or Lowering Kit
- Custom Hood
- Throttle Body Spacer / Upgrade

Please read the entire product guide before proceeding.

- Ensure all parts are present.
- If you are missing any of the components, call our customer support at (909) 947-0015.
- Do not work on your vehicle while the engine is hot.
- Make sure the engine is turned off and the vehicle is in Park or the Parking Brake is set.

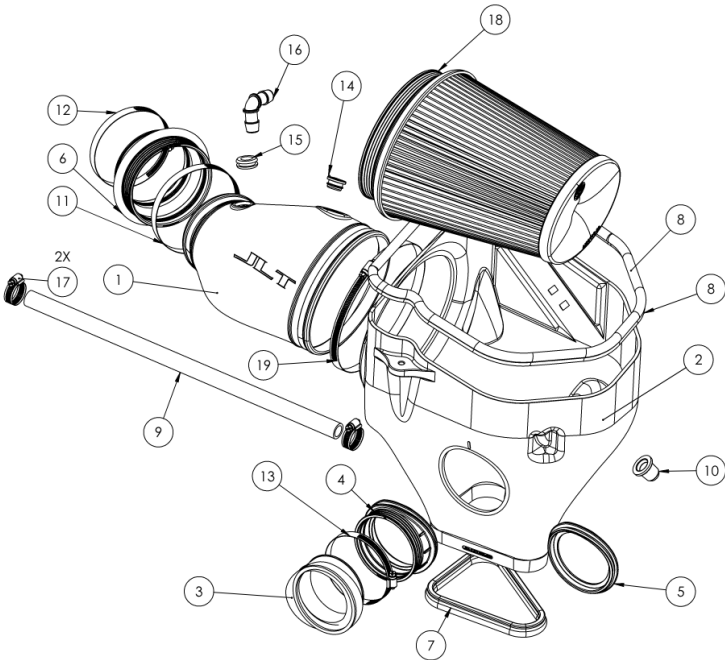
REQUIRED TOOLS

- 5/16 or 8mm socket/nut driver
- Flat head screw driver
- X-Acto knife
- Phillips Head screw driver

ENTER TO WIN

Hi. Need any help?





CAI-75-5196

ITEM NO.	PART NUMBER	DESCRIPTION	QTY.
1	AL1410-00	TUBE	1
2	AL1444B-00	HEAT SHIELD	1
3	AL1410S-00	JLT CHALLENGER HEADLIGHT SCOOP	1
4	AI2815C-00	SEAL FOR S&B CHALLENGER HEADLIGHT SCOOP	1
5	AI2822C-00	SEAL FOR STOCK CHARGER HEADLIGHT INLET SCOOP	1
6	AI2814C-00	STEP HUMP COUPLER	1
7	J10122-20	EDGE TRIM 20" LENGTH	1
8	J10122-42.5	EDGE TRIM 42.5" LONG	1
9	AI1039-18	5/8" HOSE 18" LONG	1
10	AI2291C-00	MOUNTING PRONG	1
11	AG1009-00	HOSE CLAMP, #72	1
12	AG1018-00	HOSE CLAMP, #64	1
13	AG1019-00	HOSE CLAMP, #56	1
14	AI1948C-00	IATP SENSOR GROMMET	1
15	AI2853-00	5/8" ID GROMMET FOR 7/8" OD HOLE AND 3/16" THICK	1
16	J10104-00	5/8" BARB ELBOW	1
17	AG1030-00	HOSE CLAMP, #12	2
18	KF-1093	FILTER	1
19	AG1020-00	HOSE CLAMP, #116	1

STEP 1

Remove the screw holding the airbox to the car, disconnect the IAT sensor, and loosen the hose clamp connecting the stock intake to the throttle body.

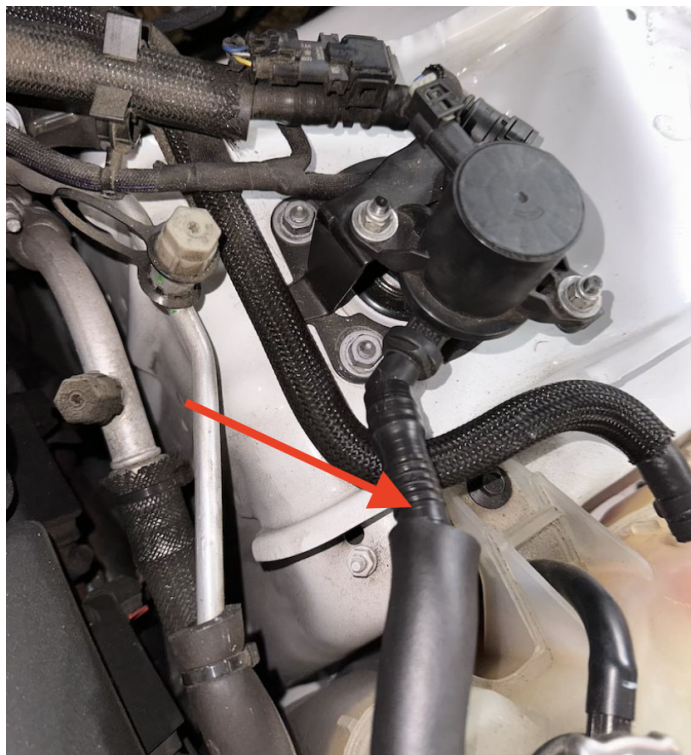


Hi. Need any help?

ENTER TO WIN

STEP 2

If you have a vehicle like the image to the right, cut the corrugated hose coming from the stock intake at the end connected to the vehicle, being careful to not damage the barbs on the fitting. Alternatively, you can also heat it up using a heat gun so it remains intact instead, being cautious to not heat up other components in the same area.



STEP 2B

If you have a vehicle like this image with a quick connect, disconnect the factory quick connect by depressing both sides of the fitting and pulling it off. Then, pull the fitting out of the stock tube to be reused with the JLT tube.



Hi. Need any help?



ENTER TO WIN

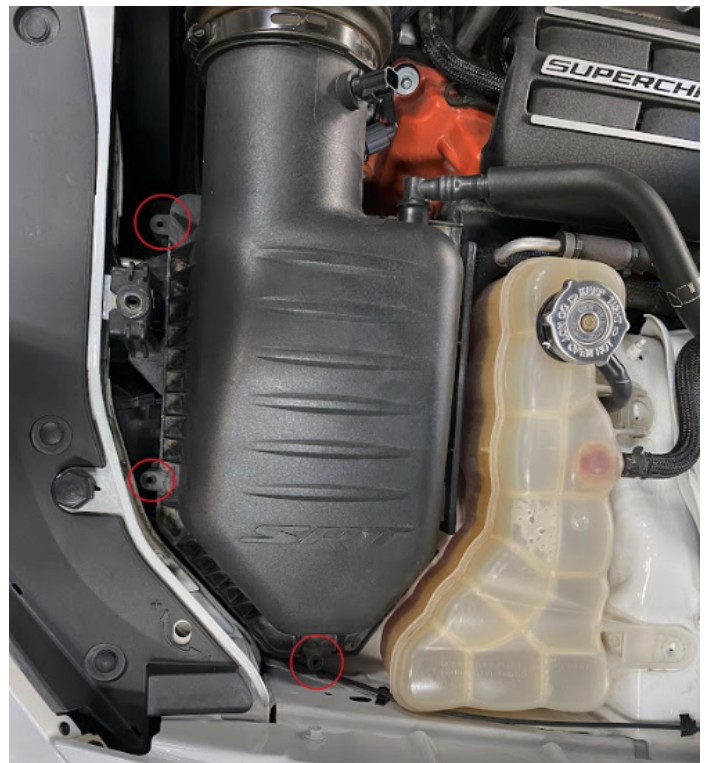
STEP 3

Unfasten the two screws holding the coolant tank to allow for more room when removing the stock intake and installing the JLT intake.



STEP 4

For Chargers only, remove the three screws securing the top of the airbox. Unfasten the hose clamp securing the tube to the airbox. Remove the top part of the airbox and by pulling towards the front of the vehicle and upwards, also removing it from the tube. Remove the panel filter.



Hi. Need any help?



ENTER TO WIN

Remove the stock intake system from the vehicle. For Challengers, remove the headlight scoop connected to the air box. For Chargers, the stock headlight scoop will be reused so it can remain in place by pinching the end of the tube so it unsnaps from the box.



STEP 6

Install the edge trim on top and bottom of the airbox. Making small relief cuts at the hard bends will ease installation and prevent the edge trim from bunching up.



STEP 7

Install the mounting prong frommet on the underside of

ENTER TO WIN



Hi. Need any help?



STEP 8

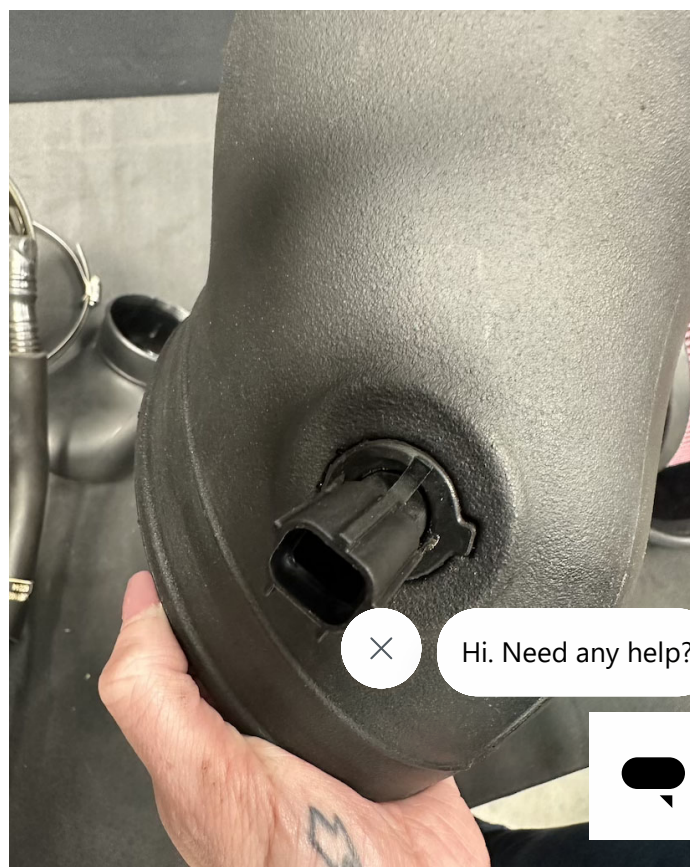
If you cut the factory line in step 2, install the 5/8" ID grommet into the tube, and then the 5/8" barbed elbow into the grommet.

If you have a factory quick connection, then install the fitting removed in step 2 into the JLT tube with the 5/8" ID grommet.



STEP 9

Carefully remove the IAT sensor from the stock tube. Then, install the supplied IAT grommet and the previously removed IAT sensor into the JLT tube by twisting it so the tab is as shown.



ENTER TO WIN



STEP 10

For Challengers: Install the inlet scoop into the seal with the smallest hose clamp (#56).



STEP 11

For Challengers: pull the pictured panel from the front of the vehicle in the headlight area.



Hi. Need any help?



ENTER TO WIN

Put the JLT box into the vehicle, guiding the box to line up with the headlight inlet scoop location. You can pull the coolant tank away to give you more room to position the box.



STEP 13

Once the box is installed, adjust the headlight scoop if necessary and fully tighten the hose clamp, shown in the first image. For Chargers, install the supplied headlight scoop seal with the notch facing upwards, shown in the second image.



Hi. Need any help?



ENTER TO WIN

STEP 13B

For Chargers, install the supplied headlight scoop seal with the notch facing upwards, shown in the image.



STEP 14

Put the filter into the box through the hole. It is recommended to fold the bottom of the flange up when inserting it, and then work around the rest of the flange to snap it in.



STEP 15

ENTER TO WIN

To prepare the tube to install it,
cut the filter hose clamp (#114)



Hi. Need any help?



put the inter nose clamp (#114)
onto the tube and the coupler

onto the tube with its hose
clamp (#72) loose. Also, you
may find it easier to not put the
last hose clamp (#64) for the
throttle body yet, instead
putting it on after the tube is
installed by fully disconnecting
it then reconnecting it over the
coupler on the throttle body.



STEP 16

Push the coupler as far as you
can onto the tube. Install the
tube into the filter flange first,
then the coupler on the
throttle body, trying to avoid
unsnapping the filter base.
Adjust the filter snap if
necessary.



Hi. Need any help?



ENTER TO WIN

STEP 17

Adjust and tighten all 3 of the hose clamps on the tube, feeling to make sure the filter and the bead on the tube line up on the bottom.



STEP 18

Reinstall the stock screw at the front of the vehicle.



STEP 19

If you cut your factory line, install the supplied 5/8" PCV Hose onto the open barb on the PCV valve, making sure the hose is the correct length to the barb on the tube (cut if necessary). Put both small hose clamps

ENTER TO WIN



Hi. Need any help?



Put both small hose clamps onto the hose, afterwards

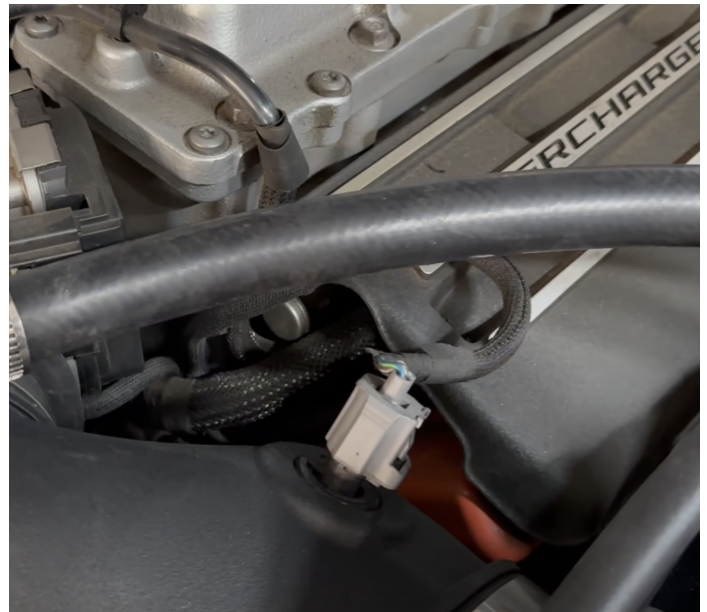
connecting the 90 degree barb fitting to the other end of the hose. Fully tighten the hose clamps.

If you did not cut the factory line and reused the stock fitting in step 2, snap the male end of the fitting onto the female end of the fitting. It should lock.



STEP 20

Reconnect the IAT Sensor to the JLT Tube.



Hi. Need any help?



ENTER TO WIN

Reinstall the trim piece by

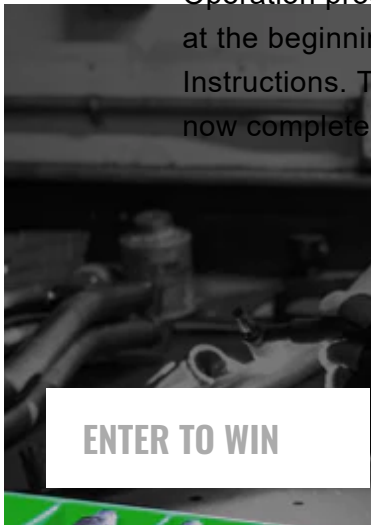
<https://sbfilters.com/pages/install-instructions-for-cai-75-5196>

putting the end on the outside of the vehicle in with the prongs going into their respective holes first, then putting the end at the middle of the vehicle in.





STEP 22

Inspect your installation. Make sure the kit is properly positioned and all fasteners and hose clamps are secured. Keep all stock parts in the event you would ever need to reinstall the stock intake assembly. If you are an installer, give the owner the QR code for the Installation Instructions so that he/she is aware of the Maintenance and Operation procedures are given at the beginning of the Instructions. The installation is now complete.



ENTER TO WIN

WIN A FREE TOOL TRAY

Sign-up below to receive the latest on product launches, insider tips and more. You'll also be entered into a tool tray giveaway where you win a new tool tray every week.   Hi. Need any help?

Email Address





Sign Up

SUPPORT

CONTACT US

PH: (909) 947-0015

FAQS

MILLION MILE WARRANTY

YOUR VEHICLE'S WARRANTY

UPGRADE GUARANTEE

SHIPPING & RETURNS

SAFETY DATA SHEETS

ABOUT US

WHY S&B

OUR TESTING PROCESS

FIND A DEALER

BECOME A DEALER

LET S&B USE YOUR VEHICLE

UNILATERAL PRICING POLICY



ENTER TO WIN



Hi. Need any help?

