

[SHOP BY VEHICLE](#)

0

INSTALL INSTRUCTIONS FOR CAI-75-5170

[PRINT](#)

BEFORE YOU START

Note: This intake kit may not fit with the following Aftermarket Parts installed:

- Body Lift or Lowering Kit
- Custom Hood
- Throttle Body Spacer / Upgrade

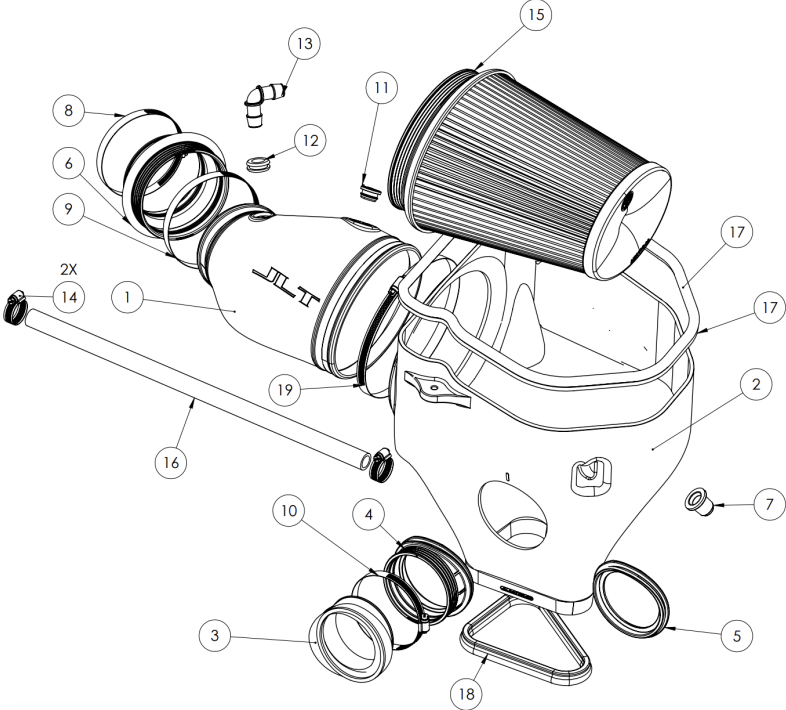
Please read the entire product guide before proceeding.

- Ensure all parts are present.
- If you are missing any of the components, call our customer support at (909) 947-0015.
- Do not work on your vehicle while the engine is hot.
- Make sure the engine is turned off and the vehicle is in Park or the Parking Brake is set.

REQUIRED TOOLS

- 5/16 or 8mm socket/nut driver
- Flat head screw driver
- X-Acto knife

[ENTER TO WIN](#)[Hi. Need any help?](#)

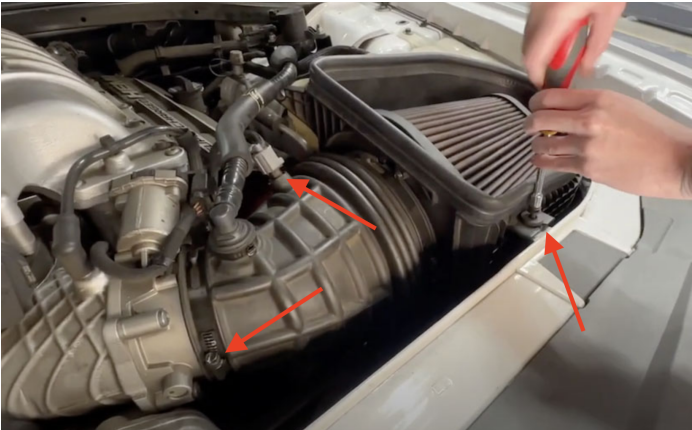


CAI-75-5170

ITEM NO.	PART NUMBER	DESCRIPTION	QTY.
1	AL1410-00	TUBE	1
2	AL1410B-00	HEAT SHIELD	1
3	AL1410S-00	S&B CHALLENGER HEADLIGHT SCOOP	1
4	AI2815C-00	SEAL FOR S&B CHALLENGER HEADLIGHT SCOOP	1
5	AI2822C-00	SEAL FOR STOCK CHARGER HEADLIGHT INLET SCOOP	1
6	AI2814C-00	STEP HUMP COUPLER	1
7	AI2291C-00	MOUNTING PRONG	1
8	AG1018-00	HOSE CLAMP, #64	1
9	AG1009-00	HOSE CLAMP, #72	1
10	AG1019-00	HOSE CLAMP, #56	1
11	AI1948C-00	IATP SENSOR GROMMET	1
12	AI2853-00	5/8" ID GROMMET FOR 7/8" OD HOLE AND 3/16" THICK	1
13	JIO104-00	5/8" BARB ELBOW	1
14	AG1030-00	HOSE CLAMP, #12	2
15	KF-1093	FILTER	1
16	AI1039-18	5/8" HOSE 18" LONG	1
17	JIO122-42.5	EDGE TRIM 42.5" LONG	1
18	JIO122-20	EDGE TRIM 20" LENGTH	1
19	AG1020-00	HOSE CLAMP, #116	1

STEP 1

Remove the screw holding the airbox to the car, disconnect the IAT sensor, and loosen the hose clamp connecting the stock intake to the throttle body.

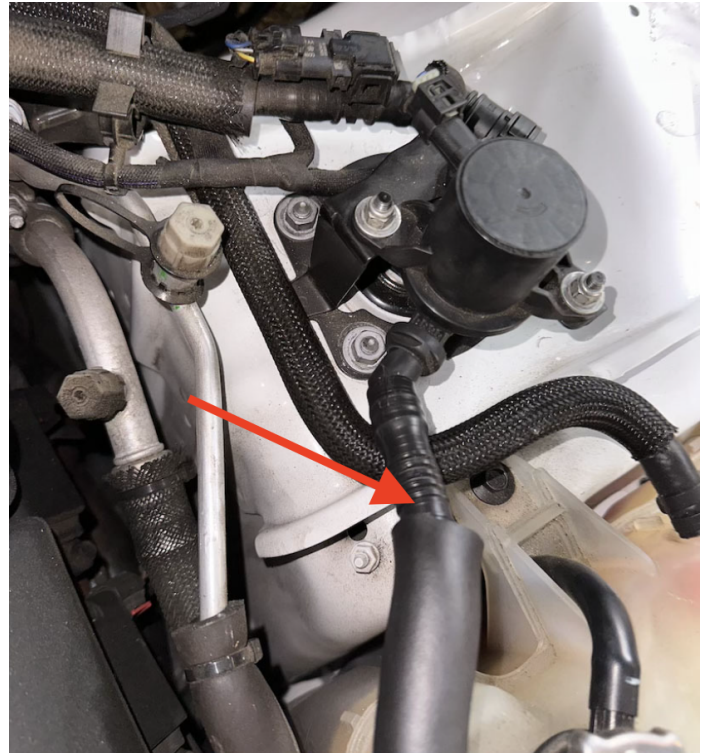


Hi. Need any help?

ENTER TO WIN

STEP 2

Cut the corrugated hose connected to the stock intake at the end connected to the vehicle, being careful to not damage the barbs on the fitting.



STEP 3

Unfasten the two screws holding the coolant tank to allow for more room when removing the stock intake and installing the JLT intake.



Hi. Need any help?



ENTER TO WIN

Remove the stock intake

<https://sbfilters.com/pages/cai-75-5170install>

Remove the stock intake system from the vehicle. For Challengers, remove the headlight scoop connected to the air box. For Chargers, the stock headlight scoop will be reused so it can remain in place by pinching the end of the tube so it unsnaps from the box.



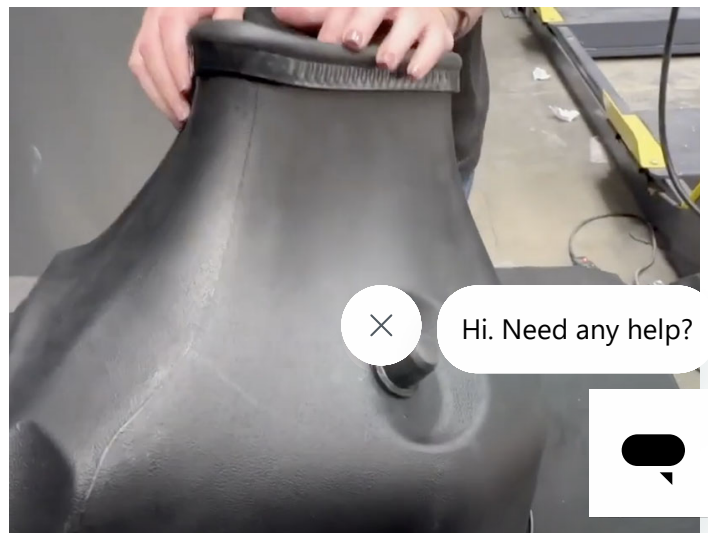
STEP 5

Install the edge trim on top and bottom of the airbox. Making small relief cuts at the hard bends will ease installation and prevent the edge trim from bunching up.



STEP 6

Install the mounting prong grommet on the underside of the box.



ENTER TO WIN

STEP 7

Install the 5/8" ID Grommet into the tube, and then the 5/8" barbed elbow into the grommet.



STEP 8

Carefully remove the IAT sensor from the stock tube. Then, install the supplied IAT grommet and the previously removed IAT sensor into the JLT tube by twisting it so the tab is as shown.



Hi. Need any help?



ENTER TO WIN

STEP 9

For Challengers: Install the inlet scoop into the seal with the smallest hose clamp (#56).



STEP 10

For Challengers: pull the pictured panel from the front of the vehicle in the headlight area.



Hi. Need any help?



ENTER TO WIN

Put the JLT box into the vehicle, guiding the box to line up with the headlight inlet scoop location. You can pull the coolant tank away to give you more room to position the box.



STEP 12

Once the box is installed, adjust the headlight scoop if necessary and fully tighten the hose clamp, shown in the first image. For Chargers, install the supplied headlight scoop seal with the notch facing upwards, shown in the second image.



Hi. Need any help?



ENTER TO WIN

STEP 12B

For Chargers, install the supplied headlight scoop seal with the notch facing upwards, shown in the image.

STEP 13

Put the filter into the box through the hole. It is recommended to fold the bottom of the flange up when inserting it, and then work around the rest of the flange to snap it in.

STEP 14

ENTER TO WIN

To prepare the tube to install it, cut the filter base clamp (#114)



Hi. Need any help?



put the inter hose clamp (#114)
onto the tube and the coupler

onto the tube with its hose
clamp (#72) loose. Also, you
may find it easier to not put the
last hose clamp (#64) for the
throttle body yet, instead
putting it on after the tube is
installed by fully disconnecting
it then reconnecting it over the
coupler on the throttle body.

STEP 15

Push the coupler as far as you
can onto the tube. Install the
tube into the filter flange first,
then the coupler on the
throttle body, trying to avoid
unsnapping the filter base.
Adjust the filter snap if
necessary.

ENTER TO WIN



Hi. Need any help?



STEP 16

Adjust and tighten all 3 of the hose clamps on the tube, feeling to make sure the filter and the bead on the tube line up on the bottom.

STEP 17

Reinstall the stock screw at the front of the vehicle.

STEP 18

Install the 5/8" PCV Hose onto the open barb on the vehicle, making sure the hose is the correct size to fit onto the barb on

ENTER TO WIN (if necessary). Put both small hose clamps onto the hose, afterwards connecting



Hi. Need any help?



the hose, afterwards connecting
the 90 degree barb fitting to the

other end of the hose. Fully
tighten the hose clamps.

STEP 19

Reconnect the IAT Sensor to
the JLT Tube.

STEP 20

Reinstall the trim piece by
putting the end on the outside
of the vehicle in with the prongs
going into their respective holes
first, then putting the end at the
middle of the vehicle in.

ENTER TO WIN

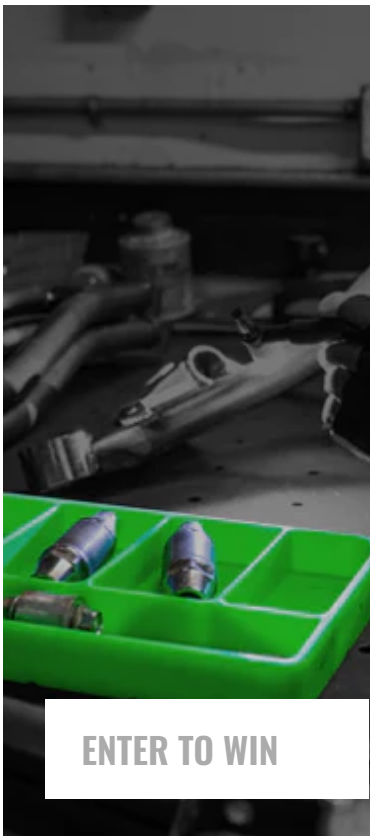


Hi. Need any help?



STEP 21

Inspect your installation. Make sure the kit is properly positioned and all fasteners and hose clamps are secured. Keep all stock parts in the event you would ever need to reinstall the stock intake assembly. If you are an installer, give the owner the QR code for the Installation Instructions so that he/she is aware of the Maintenance and Operation procedures are given at the beginning of the Instructions. The installation is now complete.



WIN A FREE TOOL TRAY

Sign-up below to receive the latest on product launches, insider tips and more. You'll also be entered into a tool tray giveaway where we choose a new winner every week.

Sign Up



Hi. Need any help?



ENTER TO WIN

✕ Hi. Need any help?

