



---

# ADJUSTABLE REAR CAMBER ARMS

(2008-2022 CHALLENGER)  
(2006-2022 CHARGER)

---

## INSTALLATION INSTRUCTIONS

### CONTENTS

---

(1) Pair Rear Camber Arm

### TOOLS REQUIRED

---

18mm Wrenches  
24mm Wrench  
27mm Wrench

SKU # CH16303



---

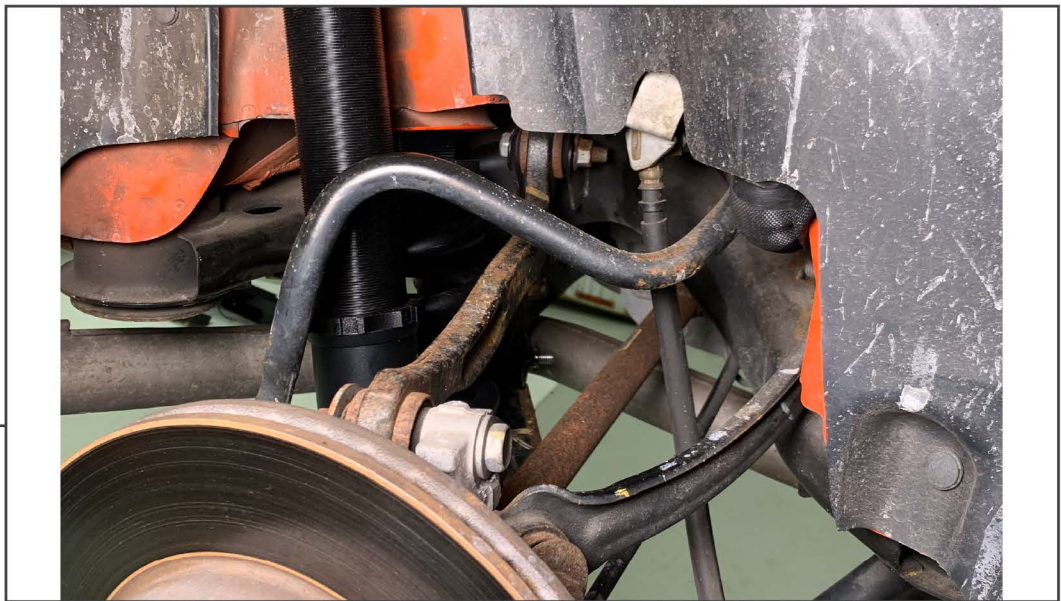
**STEP 1**



Raise and support the rear of the vehicle.

---

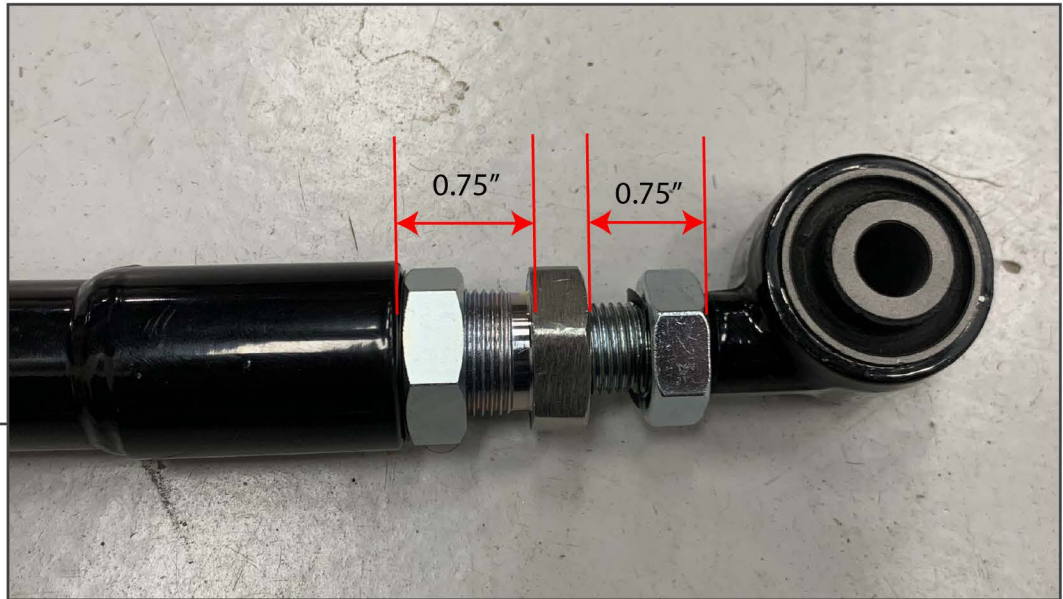
**STEP 2**



Using 18mm wrenches, loosen and remove the factory upper camber arm.



**STEP 3**



Loosen the adjustment collars to a max of 0.75". Do not exceed 0.75" of stick out.

**STEP 4**

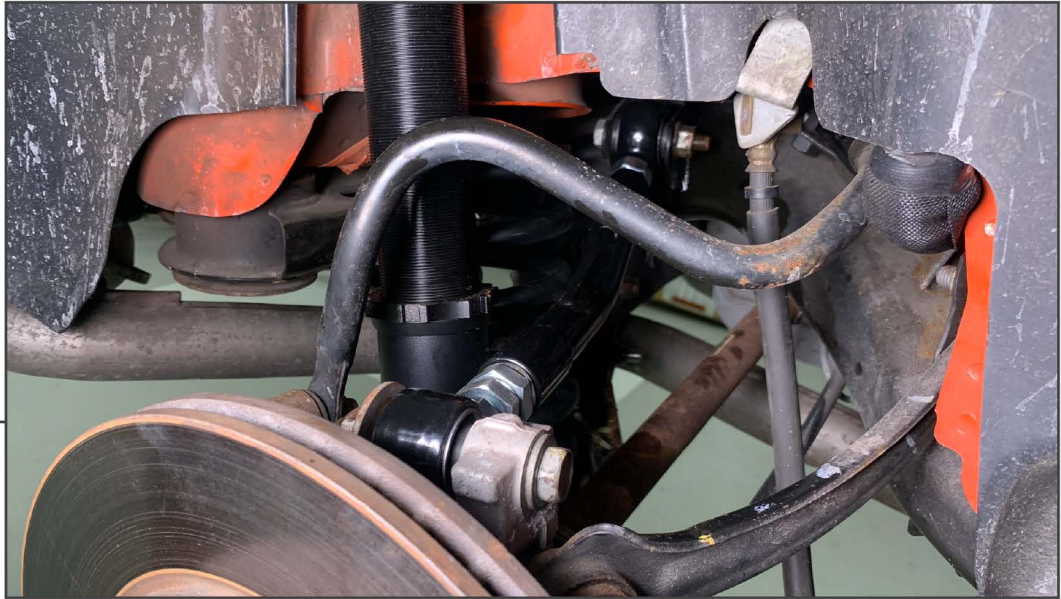


Evenly adjust the center adjustment collar until the replacement arm is the same length as the factory arm.



---

**STEP 5**



Install the adjustable arm using the factory hardware. With the suspension loaded, torque the factory bolts to factory specifications.  
Camber arm to sub-frame bolt- 63Ft. Lbs.  
Camber arm to Knuckle bolt- 72Ft. Lbs.

---

**STEP 6**



Make adjustments by moving the middle collar in or out. Do not exceed 0.75". Once the camber is set, tighten the lock nuts. Reinstall the rear wheels and torque the lug nuts to factory specification.