



# LED TAIL LIGHTS

(2008-2014 CHALLENGER)

## INSTALLATION INSTRUCTIONS

### CONTENTS

- (1) LH Tail Light
- (1) RH Tail Light
- (1) Center Tail Light
- (1) Reflective Tape

### TOOLS REQUIRED

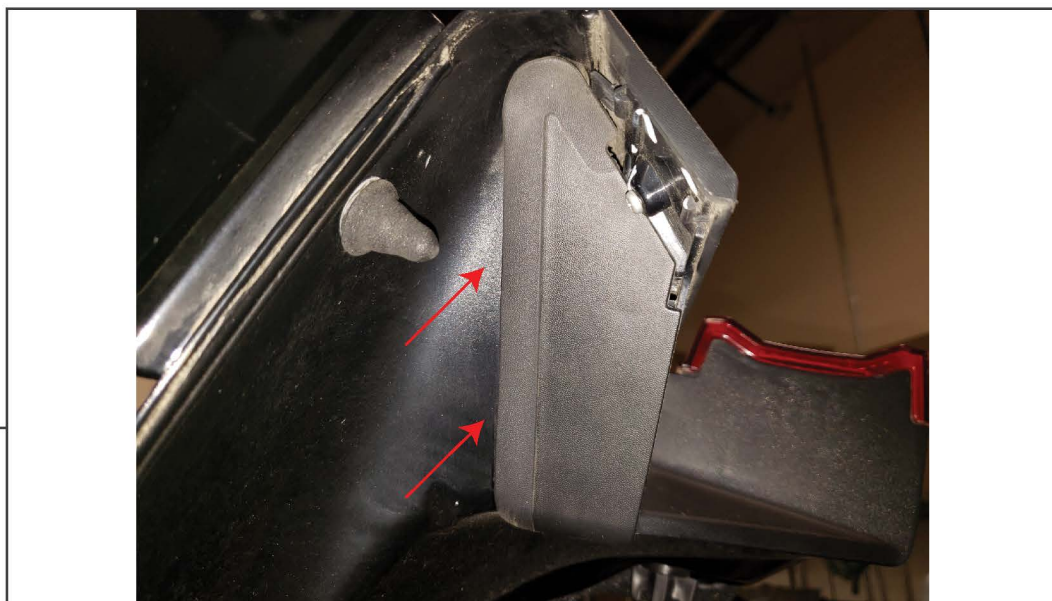
- Soft Pry Tool
- Phillips Head Screw Driver
- Wire Cutters
- Wire Crimpers

**STEP 1**



Begin the installation by removing the (4) plastic twist nuts and (2) bump stops located on the trunk lid.

**STEP 2**



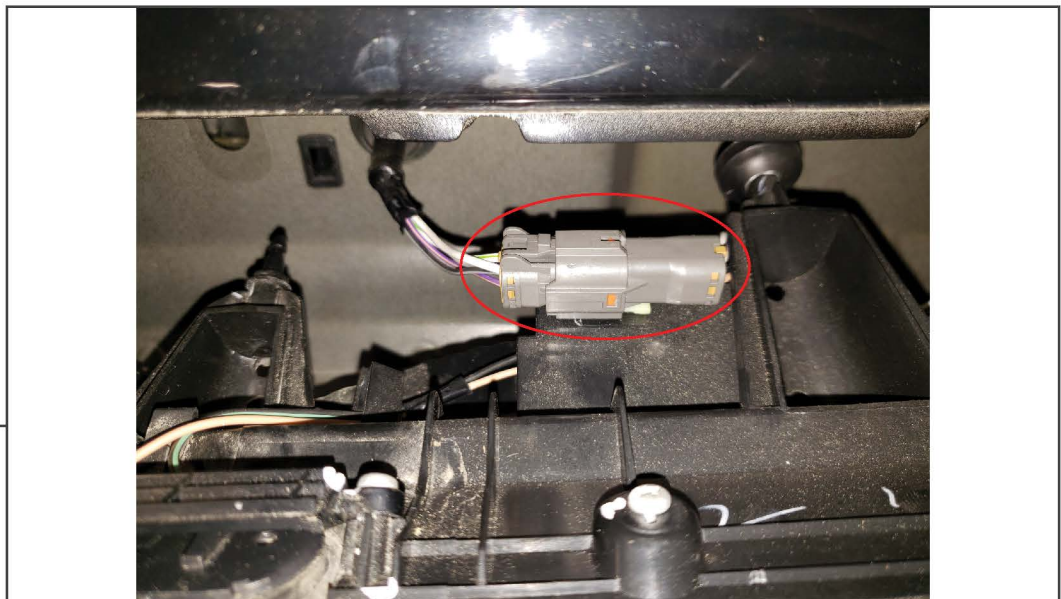
On either side the of the trunk lid, use a panel removal tool to pry off the tail light trim cover.

**STEP 3**



Using a Phillips head screw driver, remove the screw located behind the trim panel. There is (1) on each side of the center tail light.

**STEP 4**



Firmly pull the center tail light section away from the deck lid. Depress the locking tab on the electrical connection and pull the connector away from the light.

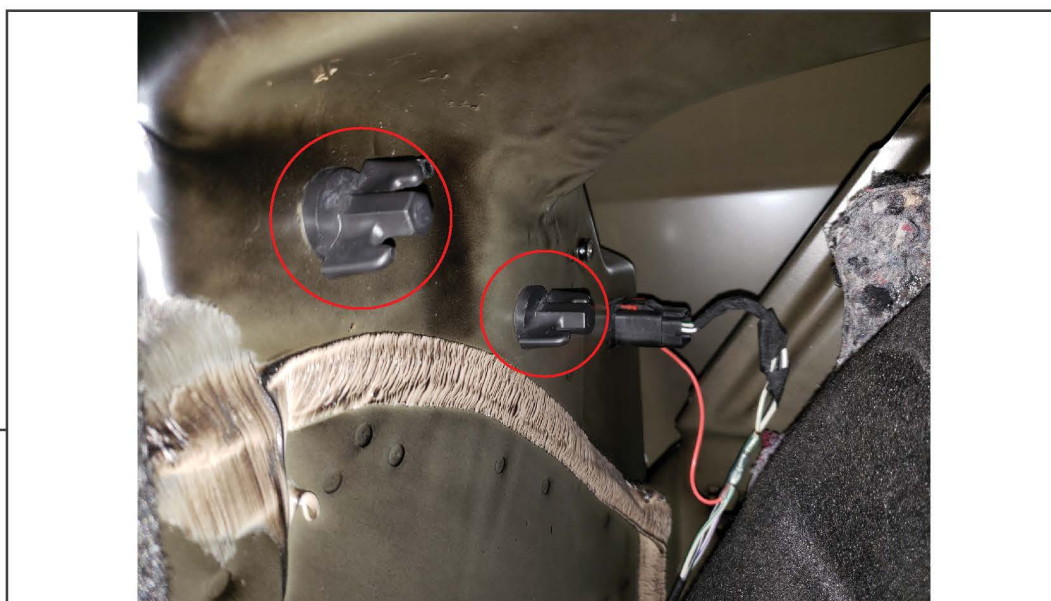


**STEP 5**



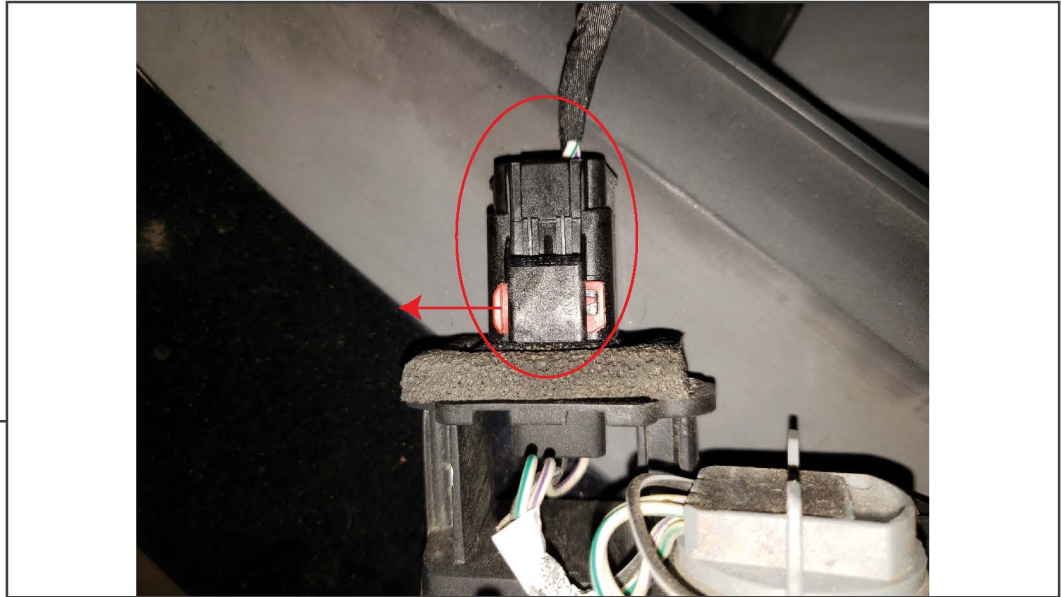
Using a soft pry tool remove the left and right side tail light trim panels.

**STEP 6**



Pull back the left and right trunk liner to access the back of the tail lights. Remove the (2) plastic twist nuts.

**STEP 7**



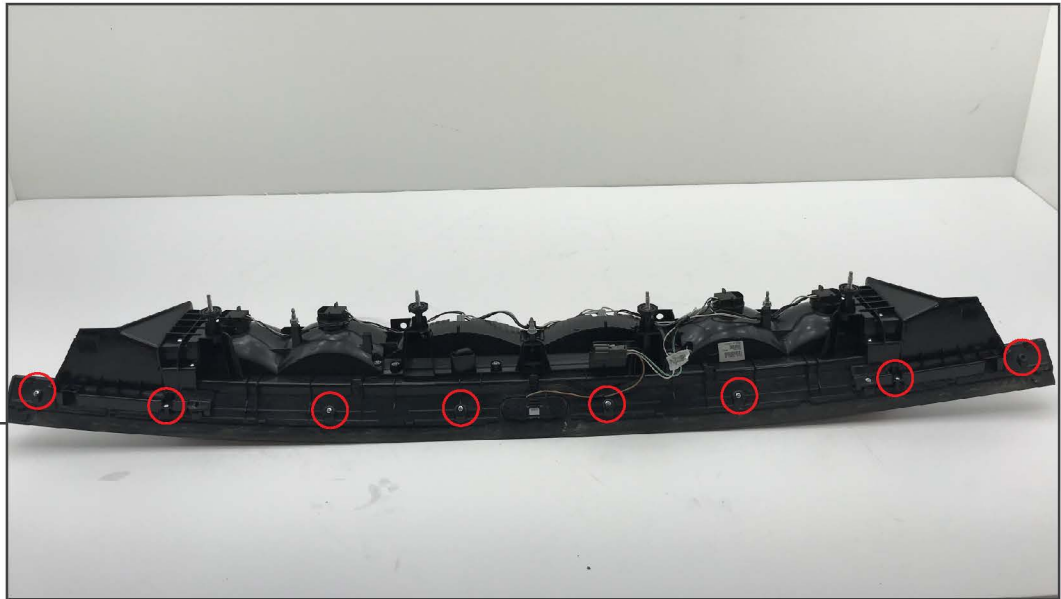
Carefully pull the tail light away from the vehicle for easier access to the electrical connector. Slide out the red locking retainer. Then depress the plugs tab and pull it away from the light.

**STEP 8**



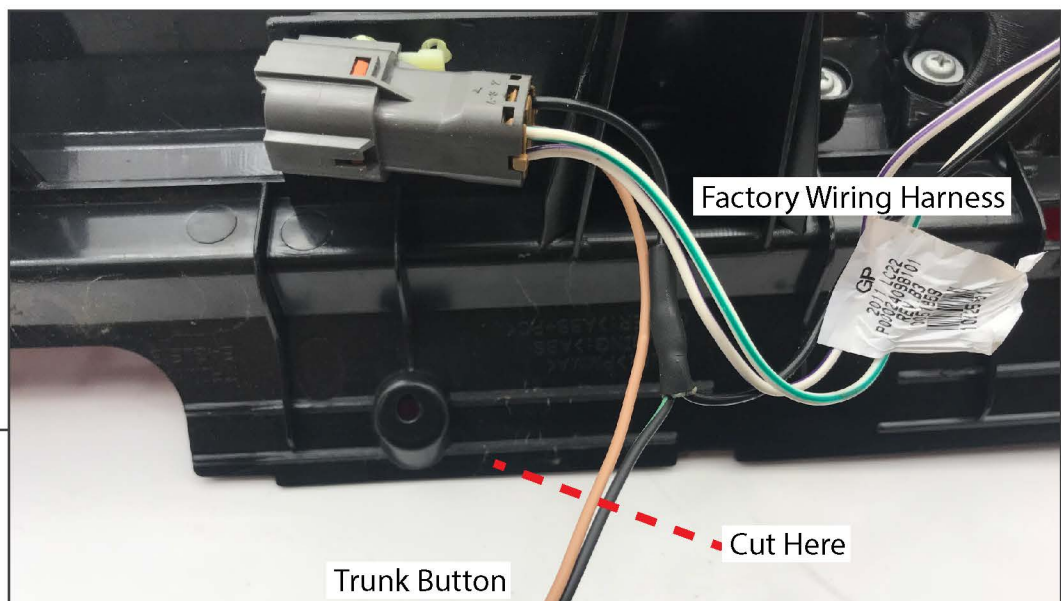
Connect the LED tail light to the factory wiring harness. Feed the turn signal wiring harness through the hole in the trunk. Reinstall the left and right side tail lights.

## STEP 9



Using a Phillips head screw driver, remove the screws securing the factory tail light trim to the factory tail light.

## STEP 10



Transfer the trim to the LED tail light using the original screws. Transfer the truck button by cutting the wires connecting it to the factory wiring harness. Splice the trunk button to the new tail light harness using the supplied scotchlok connectors. Connect the factory wiring to the LED light wiring as follows:

Factory Button	-	LED Light
Black	-	Black
Brown	-	Yellow



---

**STEP 11**



Route the additional wiring harness from step 8, from the left and right side tail light, up to the center tail light connectors. Test the lights for functionality prior to reinstalling the tail lights following Steps 1-4 in reverse order.

---

**STEP 12**



Complete the installation by installing the supplied reflective tape on either side of the license plate.