

COLD AIR



INDUCTIONS

Installation Instructions

**2016 + Chevrolet Camaro
6.2L LT1
(Part #'s 501-1100, 501-1100-B)**



WWW.COLDAIRINDUCTIONS.COM

****This Product is NOT C.A.R.B. Compliant****



Parts List

1	Insulated Air Box (Near Chrome Part # BOX-0023-70) (Textured Black Part # BOX-0023-70B)
1	Air Box Lid (Near Chrome Part # LID-0023-70) (Textured Black Part # LID-0023-70B)
1	Thermal Coated Intake Tube (Near Chrome, ITA-0023-70) (Textured Black, ITA-0023-70B)
1	M4 x .7 thread 8 mm long Stainless Button Head Screw (Part # FTN-0001-BCM) Extra
1	Air Filter (Part # CF-7437)
1	Silicone Elbow (Part # ITS-0018-ASM)
1	Installation Pack (Part #IPAC-0023)
1	Whistle Sound Dampener (WES-051516-ASM)

Tools Required

10mm Socket or Wrench
Ratchet
T20 Torx Bit
2.5 mm Allen Wrench
3.0 mm Allen Wrench
5/16 Nut Driver or Flat Screwdriver
Pliers

1: Open the trunk and locate the battery access panel on the passenger side.



Figure 1

2: Disconnect the negative battery cable using a 10mm socket or wrench. (as shown in figure 2)



Figure 2

3: Use a set of pliers to squeeze the hose clamp off the 90° elbow found on the intake tube. Slide the hose off of the elbow. (as shown in figure 3)



Figure 3

4: Pinch the grey clip on the quick disconnect fitting and separate the tube from the PCV reservoir. (as shown in figure 4)



Figure 4

5. Use the 5/16 nut driver or flat screwdriver to loosen the throttle body clamp (as shown in figure 5)



Figure 5

6. Loosen the clamp that holds the OEM air intake elbow to the OEM air box. (as shown in figure 6)



Figure 6

7. Take the elbow off the throttle body by grasping and applying pressure downward near the throttle body. (as shown in figure7)



Figure 7

8. Disconnect the other end of the elbow from the OEM air box. (as shown in figure 8)



Figure 8

9. Locate and undo the sound enhancer tube from the clip, that holds it, by lifting up. (as shown in figure 9)



Figure 9

10. Lift firmly and rock the air box left-to-right to separate it from its rubber isolators (as shown in figure 10). **Do not lift the air box out of the vehicle yet,** as the MAF sensor is still plugged in and connected to the car via wiring harness.



Figure 10

11. **Do not disconnect the wiring harness from the MAF sensor,** doing so will cause the check engine light to come on. Instead, leave the MAF connected and use the T20 Torx bit to remove the Torx head screws that attach the sensor to the air box (as shown in figures 11A and B). Gently set the MAF sensor (while still plugged in) on the engine cover, out of the way, until you are ready to install it in the new cold air inductions Inc. intake system.



Figure 11A



Figure 11B

12. You can fully remove the OEM air box from the vehicle. It's common for the rubber isolators/grommets, used in the air box mounts to come out with the air box. Pull them off the air box if this occurs and put them back in their position on the car. There is a total of three. (as shown in figure 12)



Figure 12

13. Prep the Cold Air Inductions Inc. air box. Holding the air box, slide the filter through the opening. (as shown in figure 13)



Figure 13

14. The new air box from Cold Air Inductions Inc., installs the same way the factory intake box did. With the new air filter installed in the air box, line the mount up with the rubber isolators/grommets and push it down squarely and firmly. Make sure the intake box seats into all 3 of the rubber isolators. (as shown in figures 14A and B)



Figure 14A



Figure 14B

15. Use the 2.5 mm Allen wrench to remove the MAF sensor screw from the new intake MAF housing (as shown in figure 15). **TIP** Place a microfiber cloth or paper under the tube while doing so to catch the screws in case you drop them.



Figure 15

16. Locate the MAF sensor that was previously set aside. Install the sensor into the new MAF sensor housing using the provided screws that were just removed from the new MAF housing (as shown in figure 16A and B)

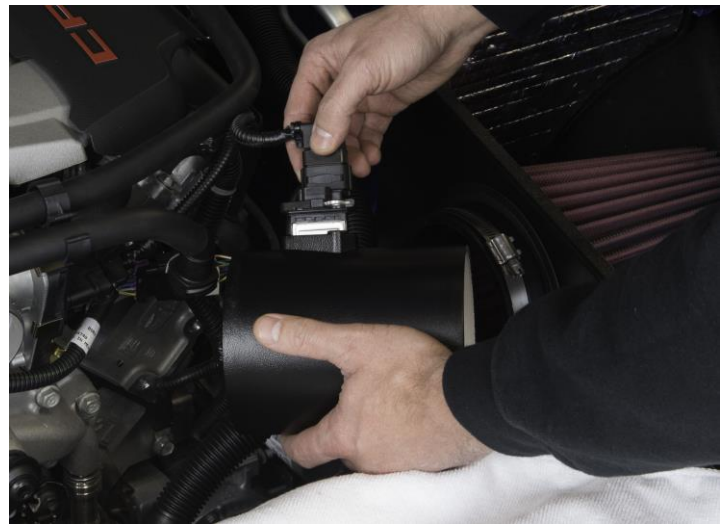


Figure 16A



Figure 16B

17. Install the CAI MAF housing into the CAI air filter until the housing bottoms out on the filters tube stop (as shown in figure 17A) **Align the DOT on MAF housing with the DOT on the Air box. This is critical for optimal performance/drivability.** (as shown in figure 17B)

Tip

The arrow on the MAF sensor should be aligned with the dot on the air box.



Figure 17A

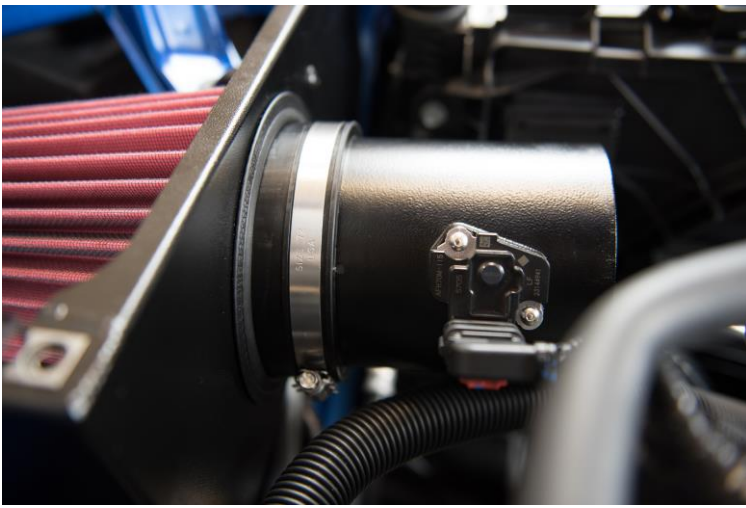


Figure 17B

18. Tighten the clamp on the air filter to the MAF housing. (as shown in figure 18)



Figure 18

19. Locate the OEM supplied intake tube. Remove the PCV reservoir fitting and the 90° fitting using a screwdriver to pry open the band clamps that secure the fitting to OEM intake duct. These clamps will be discarded. (as shown in figures 19A and B)



Figure 19A



Figure 19B

20. Install both the PCV reservoir and the 90° fitting into the CAI Silicone intake elbow. (as shown in figure 20)



Figure 20

21. Locate the new hose clamps and put one clamp on each end of the new intake elbow. Install the elbow onto the MAF housing then the throttle body. Do not tighten at this time. (as shown in figure 21)

*** NOTE ***

On some cars, you may need to push the air conditioning line down approximately $\frac{1}{4}$ inch to clear the new air intake tube. Do this gently to avoid putting a kink in the metal line.



Figure 21

22. To achieve proper tube alignment, align the arrow on the MAF housing with the dimple on the filter and the dot on the air box. See proper MAF alignment on last page. When correctly installed the MAF housing should be collinear with silicone elbow. Tighten the clamps on the intake elbow, MAF housing, and throttle body. (as shown in figure 22)



Figure 22

23. Locate the Nylon clips provided to hold the 90° fitting and the PCV reservoir in place. Install these clips on the 90° fitting and PCV reservoir where they meet the intake

elbow but leave them loose so you can turn the fittings to the desired angle before clamping them tight with the pliers. (as shown in figures 23A and B)



Figure 23A



Figure 23B

24. Use a set of pliers to reinstall the hose on the 90° fitting with the OEM clamp. (as shown in figure 24)



Figure 24

25. Put the quick disconnect back on the PCV reservoir. (as shown in figure 25)



Figure 25

26. Install the quick disconnect hose back on the PCV reservoir, you can now position the PCV reservoir and sound enhancer hose to the original position. Make sure both clamps are 1mm from edge of coupler (proper clamp alignment is illustrated on the last page). Tighten clamps by squeezing with a set of pliers. (as shown in figures 26A and B)



Figure 26A



Figure 26B

27. Install the air box lid. Note the front edge of the lid will slightly tuck under OEM sight shield (proper lid alignment is illustrated on the last page). Once lid is in position use your finger and light push down while going in a circular motion to align all 3 $\frac{1}{4}$ turn fasteners. Once aligned use a 3mm Allen wrench to turn the quarter turn fasteners (1) $\frac{1}{4}$ turn. *Do NOT try to tighten more than a quarter turn as this will damage the fastener. (as shown in figures 27A and B)



Figure 27A



Figure 27B

28. Double check all clamps and hardware to ensure a tight connection.

INSTALL COMPLETE!

***Important:** Make sure to check & tighten all clamps and air filter periodically.

***Proper Lid Aliment**



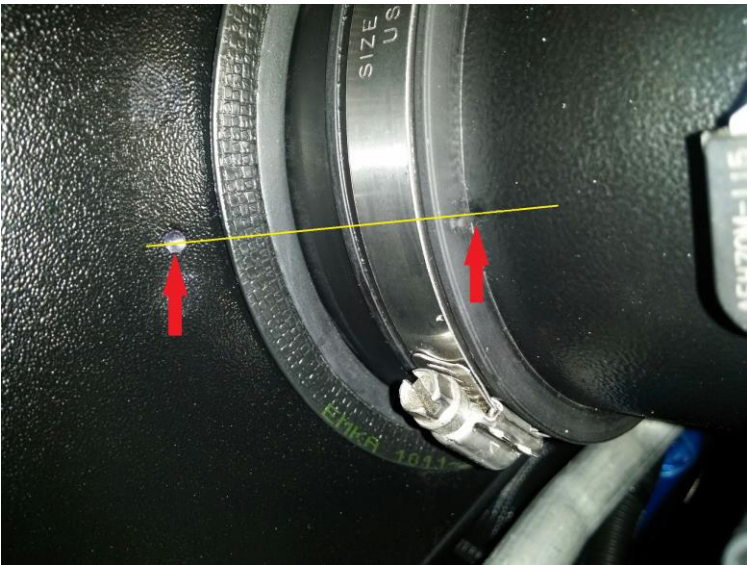
***Proper Clamp alignment**



***Clamp position reference**



***Proper MAF Tube, Filter and Air Box Alignment**



***NOTICE!**

Some Camaro's with the LT1 V8 engine may experience a whistle via the factory intake MANIFOLD after installing a less restrictive air intake system. If you hear a whistle noise after the installation of our intake, please see the instructions included with the WHISTLE SOUND DAMPENER. Thanks!

****IMPORTANT****

Warranty Registration Instructions

***This product comes with a Limited Lifetime Warranty against material defect and product craftsmanship. The intake kit must be registered online for your warranty to be activated.**

To register your product:

1. Go to:
www.ColdAirInductions.com/contact-us/register

2. Fill out our Registration form

3. Click Submit

Warranty details can be found under the FAQ section on our website