



AXLE BACK EXHAUST SYSTEM

(2016-2019 CAMARO - WITHOUT NPP DUAL MODE EXHAUST)

INSTALLATION INSTRUCTIONS

CONTENTS

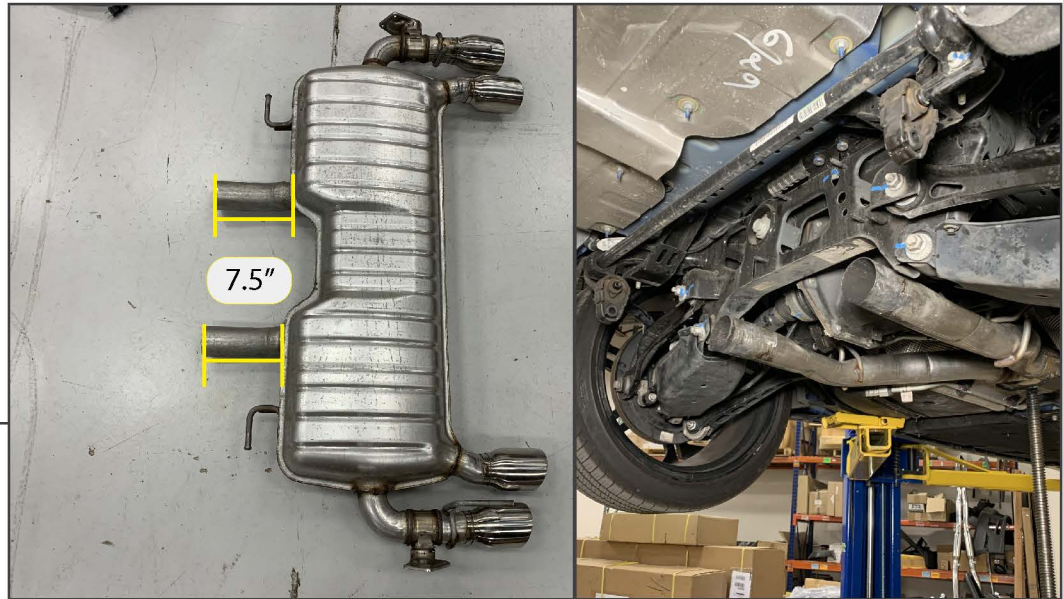
- (1) LH Muffler Assembly
- (1) RH Muffler Assembly
- (2) 2.75" Exhaust Clamps

TOOLS REQUIRED

- Reciprocating Saw
- Metal File
- 7mm, 15mm Sockets
- Ratchet



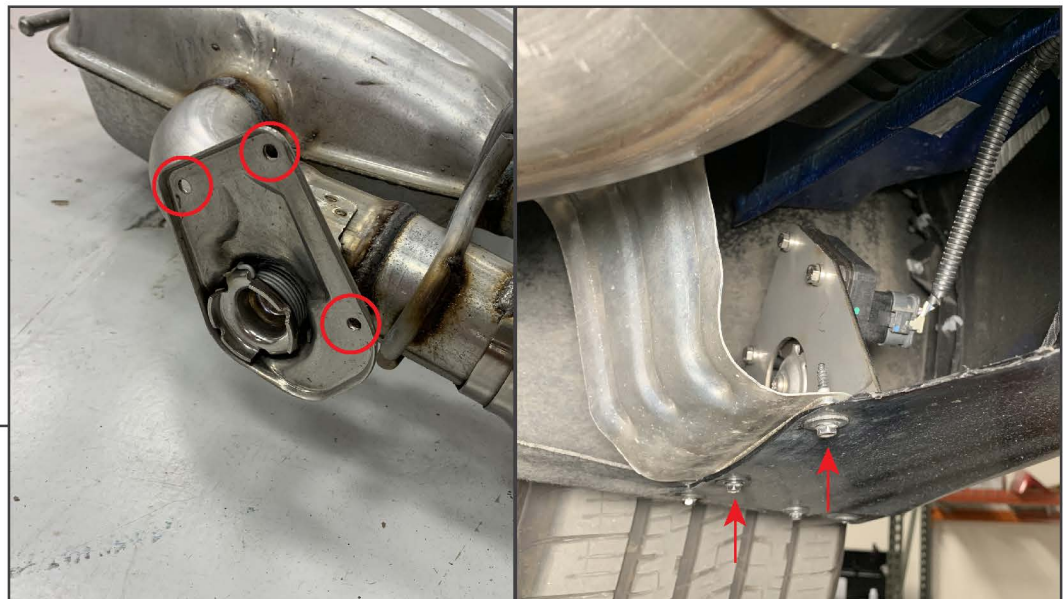
STEP 1



Begin by measuring 7.5" from the muffler to the front of the vehicle. Use a permanent marker to draw a line on each pipe entering the muffler. The line should be drawn directly under the rear edge of the vehicle subframe.

With the muffler cut with all edges filed down, unplug the exhaust valve on each side of the muffler, if equipped. Then, unbolt the rear-most hangers from the vehicle chassis by removing (2) 15mm nuts per bracket. Remove the front-most hangers from the muffler, and place the muffler on a workable surface.

STEP 2



Vehicles equipped with exhaust valves: Remove the (3) bolts securing each valve from the muffler. Secure the valve to the included relocation bracket.

Remove (2) 7mm screws under the bumper securing the heat shield to the bumper. Separate the shield and bumper gently and fit the relocation bracket in between the two panels and secure using the (2) 7mm screws. Plug in the exhaust valve once secure.



STEP 3



Transfer the hangers from the original muffler to the new mufflers in the same orientation. Fit the included (2) 2.75" exhaust clamps onto the end of the vehicle exhaust system. Then, fit each muffler to the vehicle using the OEM hangers.

STEP 4



Adjust the mufflers to best fit the vehicle. Fit the exhaust clamps to the end of the pipe to ensure the most clamping force, and tighten the exhaust clamps to secure into place. Tighten to 45 ft. lbs.

Installation is now complete.