



# INSTALL INSTRUCTIONS FOR CAI-75-5178

**PRINT**

## BEFORE YOU START

Note: This intake kit may not fit with the following Aftermarket Parts installed:

- Custom Hood

**Please read the entire product guide before proceeding.**

- Ensure all parts are present.
- If you are missing any of the components, call our customer support at (909) 947-0015.
- Do not work on your vehicle while the engine is hot.
- Make sure the engine is turned off and the vehicle is in Park or the Parking Brake is set.

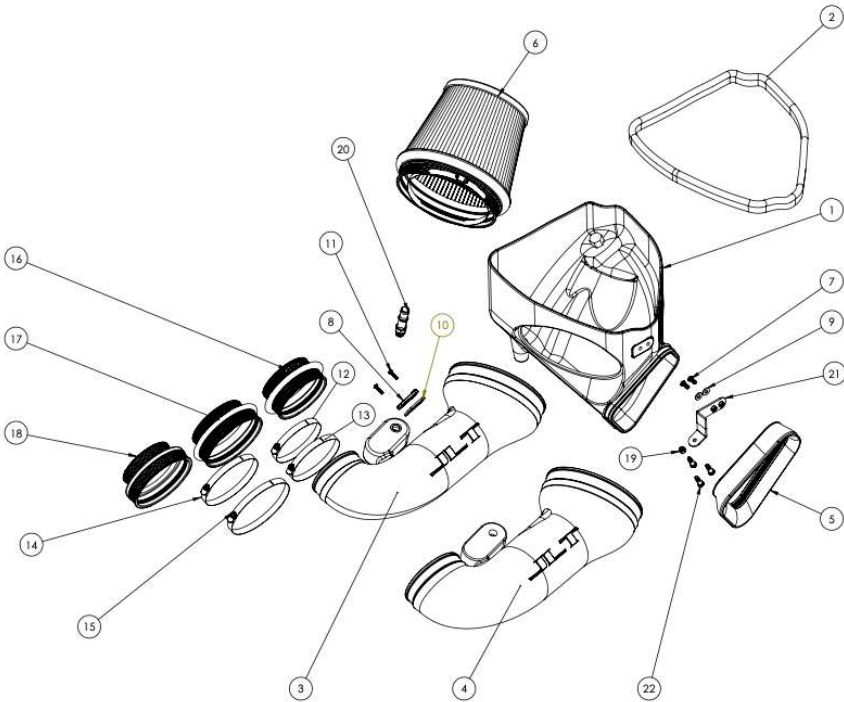
## REQUIRED TOOLS

- 5/16 or 8mm socket/nut driver
- Phillips/flathead head screw driver
- Channel locks
- X-Acto knife



Hi. Need any help?





ITEM NO.	PART NUMBER	DESCRIPTION	QTY.
1	AL14138-00	AIR INTAKE BOX	1
2	J0122-42.5	Edge Trim (AL14138-00)	1
3	AL1414-00	INTAKE TUBE, STOCK TUNE	1
4	AL1458-00	5" INTAKE TUBE, CUSTOM TUNE	1
5	AI2850C-00	Air box scoop	1
6	KF-1091	FILTER	1
7	AI3378-00	18-8 Stainless Steel Button Head Hex Drive Screws Black Oxide, 1/4"-20 Thread Size, 5/8" Long	2
8	AI1822-00	MAF Mount, Black	1
9	AI1713-00	FLAT WASHER	2
10	AI1823-00	Gasket, MAF Mount	1
11	AI1837-00	Screw, SEMS, Pan Head, Phillips, #8-32 X 3/4, SS	2
12	AG1008-00	Hose Clamp, #60	1
13	AG1018-00	Hose Clamp, #64	1
14	AG1009-00	Hose Clamp, #72	1
15	AG1010-00	Hose Clamp, #80	1
16	AI2851C-00	Step hump coupler, 3.90" to 4.20" ID.	1
17	AI3421C-00	Step hump coupler, 4.25" to 5.00" ID	1
18	AI3049C-00	Step hump coupler, 3.875" to 5.00"	1
19	AI1074-00	Locknut, Nylon, 1/4-20 UNC, Zn Pltd	1
20	AI1701-00	Fitting, Quick Connect to 3/8"NPT	1
21	AI3422-00	MOUNTING BRACKET	1
22	AI3548-00	Alloy Steel Shoulder Screw, 1/4-20	3

# WHICH TUBE TO INSTALL

The JLT Intake Comes with 2 intake tubes and 3 couplers.

## NO TUNE Required

**Tube:** This intake tube has 1 compatible coupler that will work with the stock throttle body and can be stretched over a a 95mm TB.

**5" TUNE REQUIRED**

**Tube:** This intake requires a custom tune(rescaled MAF values). Two different couplers are included and compatible with this tube. The smaller of the two fits the OEM or 95mm TB. The larger of the two works with a 103mm TB.

The no tune required intake is pictured in the instructions below but it is the same install for which setup you are installing.

**STEP 1**

Ensure that the engine bay is cooled down before starting.



## STEP 2

Use a 8mm/5/16" nut driver to loosen the hose clamp on the throttle body.



## STEP 3

Depress the button on the PCV quick connect and pull off.

## **STEP 4**

Slide the red locking tab back and depress the button inside the red locking tab. Pull off the connector.

## **STEP 5**

Squeeze the constant tension clamp and pull off the hose from the intake tube.

## **STEP 6**

Lift the intake kit out of the vehicle. We will be reusing the MAF sensor and side grommet from the OEM intake.

## STEP 7

The hose you removed from the tube in "step 5" is connected to a hard tube under the intake tube. Cut off the clamp that connects the rubber hose to the plastic tube then install the cap (step 8)

## STEP 8

Install the black cap to the end of the sound tube.

The JLT Intake does not use the sound tube. It is loud enough :)

## **STEP 9**

With a torx 20, remove the OEM MAF sensor.

## **STEP 10**

Install the JLT MAF gasket and MAF pad onto the OEM MAF sensor and install into the tube.

## STEP 11

Use the included Phillips head bolts to secure down the MAF sensor.

## STEP 12

Install the PCV fitting onto the JLT tube. This is a NPT fitting so there will still be 1-2 threads showing when its tight. This fitting can be installed by hand without a wrench.

Install the coupler on the end of the tube.



## **STEP 12B**

Install the front silicone scoop onto the JLT airbox.

## **STEP 13**

Install the bracket onto the airbox. Install the bolts from the inside of the box.

## **STEP 14**

Remove the grommet from the OEM airbox and install it into the vehicle (step 15).

## **STEP 15**

Install the grommet here.

## **STEP 16**

Install the filter into the airbox from the inside.

## **STEP 17**

The groove on the filter will grip the opening on the JLT airbox

## **STEP 18**

Install the airbox into the car.

## **STEP 19**

Install the tube into the air filter and onto the throttle body and tighten down the hose clamps.

## STEP 20

Reinstall the MAF sensor and PCV quick connect.

## STEP 21

Inspect your installation. Make sure the kit is properly positioned and all fasteners and hose clamps are secured. Keep all stock parts in the event you would ever need to reinstall the stock intake assembly. If you are an installer, give the owner the QR code for the Installation Instructions so that he/she is aware of the Maintenance and Operation procedures are given at the beginning of the Instructions. The installation is now complete.



