



REAR SPOILER

(2016-2024 CAMARO - WITHOUT SPOILER CAMERA)

INSTALLATION INSTRUCTIONS

CONTENTS

- (1) Rear Spoiler
- (1) LH Inner Winglet
- (1) LH Outer Winglet
- (1) RH Inner Winglet
- (1) RH Outer Winglet
- (6) M6 Studs
- (12) M6 Flat Washers
- (6) M6 Nuts
- (6) Phillips Screws
- (2) Double Sided Tape Pads
- (1) Drilling Template Sheet

TOOLS REQUIRED

- 10mm Socket
- Ratchet w/ Extension
- Panel Removal Tool
- 3mm Allen Key
- Drill & Drill Bits
- Fishing Line
- Exterior Detailer
- Isopropyl Alcohol
- Microfiber Cloth

SKU # CC2015

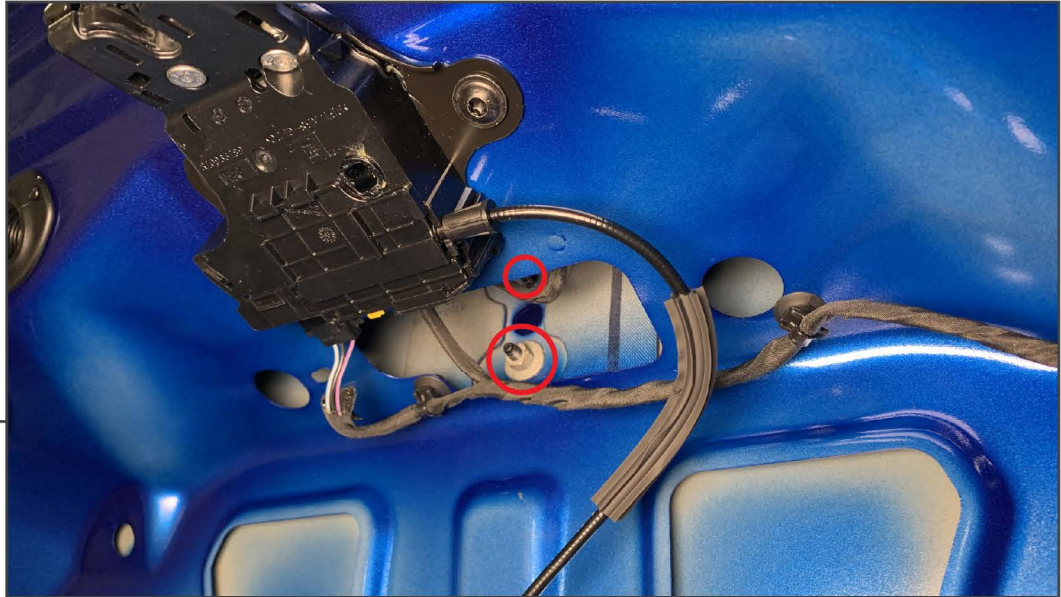
**STEP 1**

Remove (7) plastic push clips from the trunk insulation. Un-thread the (2) trunk stoppers. Remove (1) trunk striker plastic panel, and remove the trunk insulation from the vehicle and set aside.

**STEP 2**

Remove (2) rubber grommets from each end of the trunk lid.

Vehicles without OEM spoiler: Skip to Step 6.



STEP 3

Remove (2) 10mm nuts from the center of the trunk lid.



STEP 4

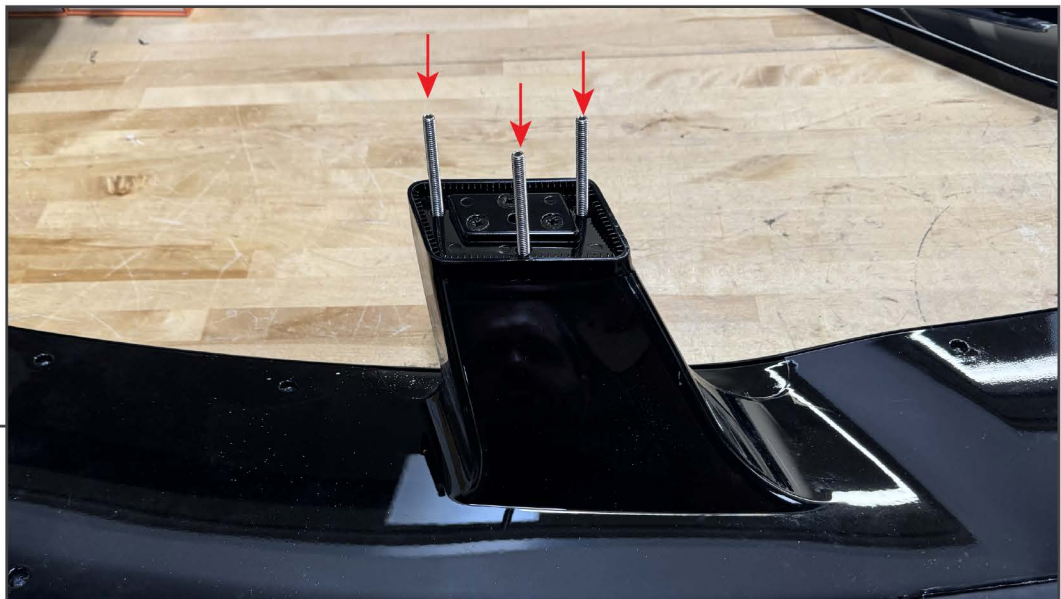
Remove (2) 10mm nuts from each side of the spoiler. With the hardware loose, hinge the trunk lid downwards, then remove the hardware to allow gravity to keep the hardware in the socket.

STEP 5



Close the vehicle trunk lid, and use fishing line to separate the double sided tape in between the original spoiler and the vehicle trunk lid. Clean the vehicle trunk lid with exterior detailer and a microfiber cloth, allow to fully dry.

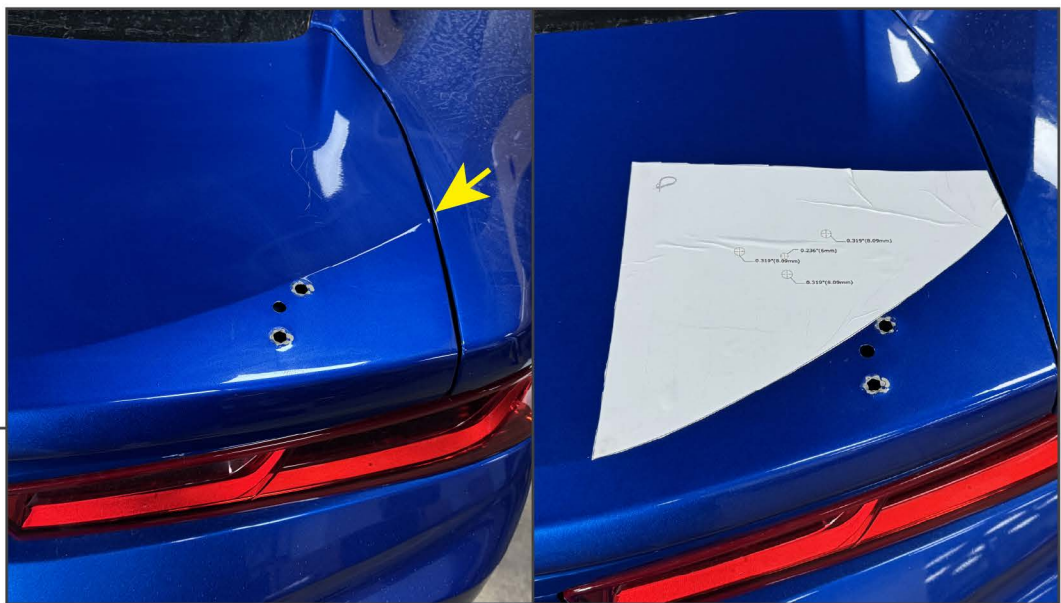
STEP 6



Place the spoiler on a soft workable surface. Install the (6) M6 studs into the base of the spoiler using a 3mm Allen key.

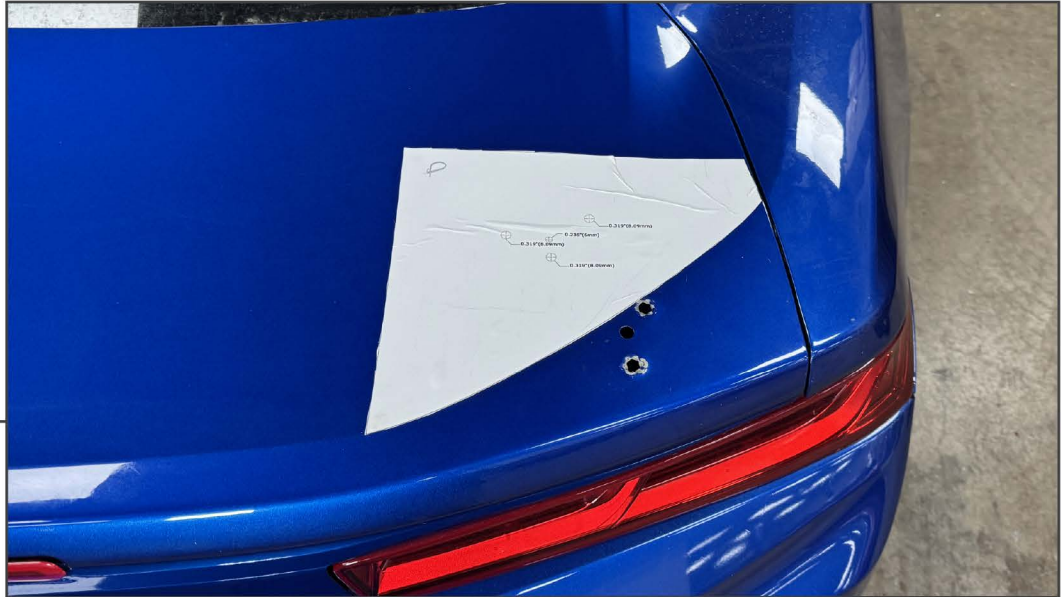
**STEP 7**

Clean the base of the spoiler using isopropyl alcohol and a microfiber cloth. Then, peel the tape backing from each of the included tape pads. Fit the tape around the studs and push firmly to the spoiler to secure into place.

**STEP 8**

Locate the body line in the top of the trunk. This body line is important for aligning the template.

Label the inside of the template "D" or "P" corresponding with the template label. Then, cut the templates out of the sheet.

**STEP 9**

Test fit the template to each side of the vehicle, the arch of the template will align to the body line, and the smaller edge will meet the edge of the trunk lid.

Once familiar, peel the adhesive backing and adhere the template to the trunk. Ensure to lay the template as flat as possible. Drill the holes using the sizes indicated in the template.

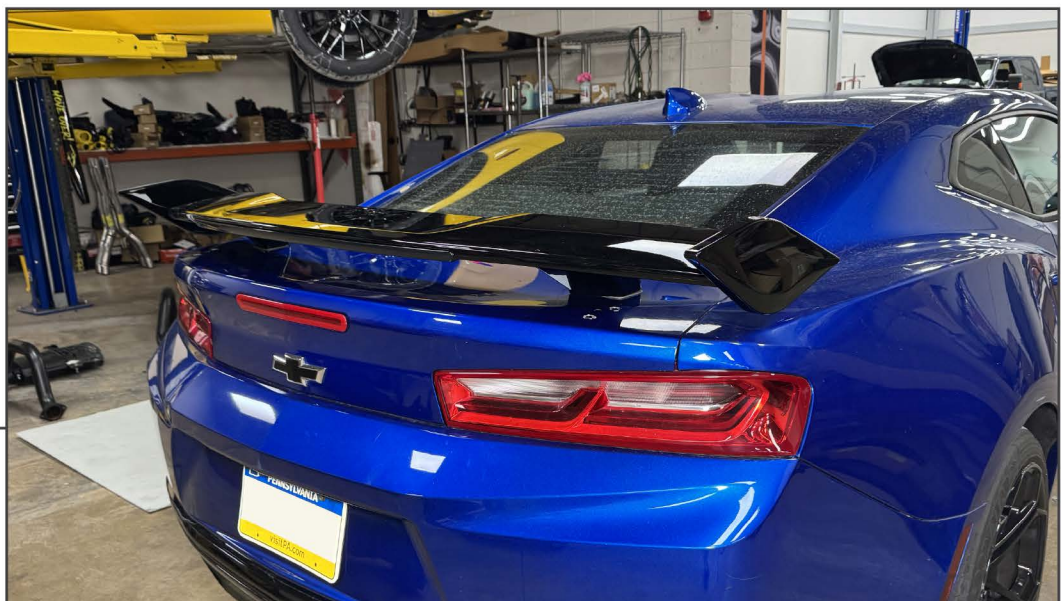
**STEP 10**

Once the holes are drilled, test fit the spoiler. Once the spoiler studs align, clean the spoiler mounting points using isopropyl alcohol and a microfiber cloth. Then, peel the tape backing and install the spoiler to the vehicle. Open the trunk, and secure the spoiler using (6) M6 flat washers and (6) M6 nuts. Tighten all hardware evenly until secure.



STEP 11

Secure each of the inner winglets to the end of the spoiler using (3) Phillips screws. Tighten evenly until secure, do not over-tighten.



STEP 12

Fit each outer winglet over the inner winglet, and press into place until properly snapped into place.

Re-install the trunk liner using OEM fasteners.

Installation is now complete.