



# MUFFLER DELETE AXLE BACK EXHAUST SYSTEM

(2016-2022+ CAMARO SS)

---

## INSTALLATION INSTRUCTIONS

### CONTENTS

---

- (1) LH Front Pipe
- (1) RH Front Pipe
- (1) LH Tail Pipe
- (1) RH Tail Pipe
- (4) Exhaust Tips
- (2) 2.75" Exhaust Clamps
- (6) 3" Exhaust Clamps
- (2) Exhaust Valve Relocation  
Brackets

### TOOLS REQUIRED

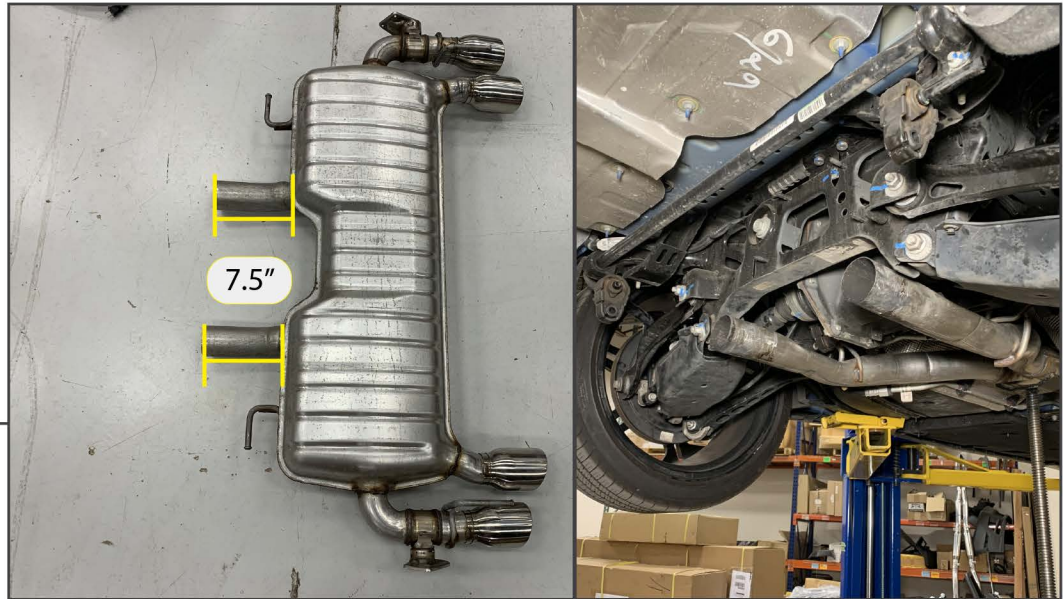
---

- Reciprocating Saw
- Metal File
- 7mm, 15mm Sockets
- Ratchet

SKU # CC15976  
Edited: 11/28/2022



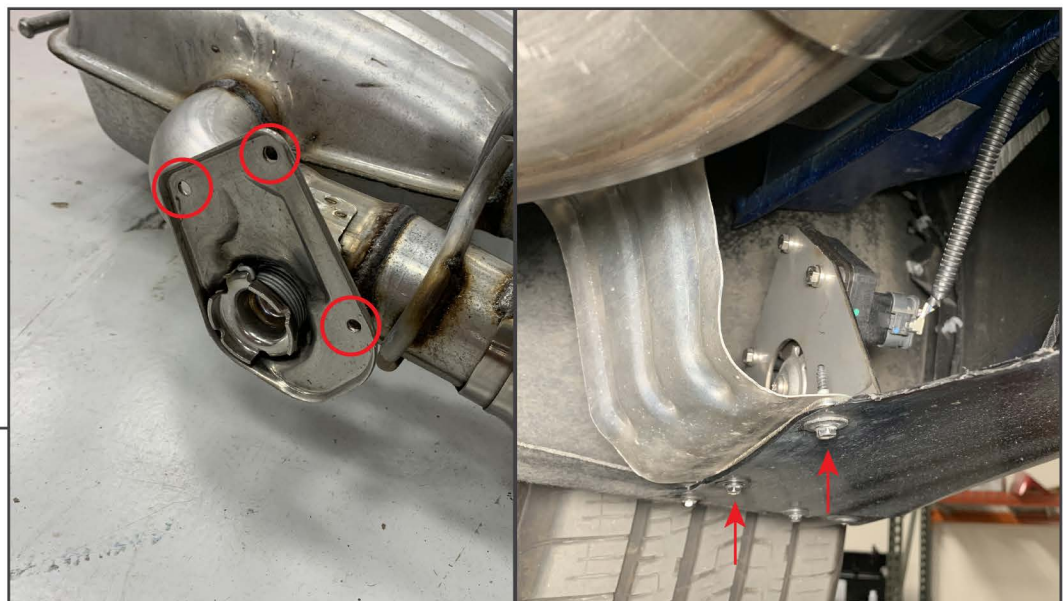
## STEP 1



Begin by measuring 7.5" from the muffler to the front of the vehicle. Use a permanent marker to draw a line on each pipe entering the muffler. The line should be drawn directly under the rear edge of the vehicle subframe.

With the muffler cut, unplug the exhaust valve on each side of the muffler, if equipped. Then, remove the (4) rubber hangers securing the muffler to the vehicle and set the muffler on a workable surface.

## STEP 2



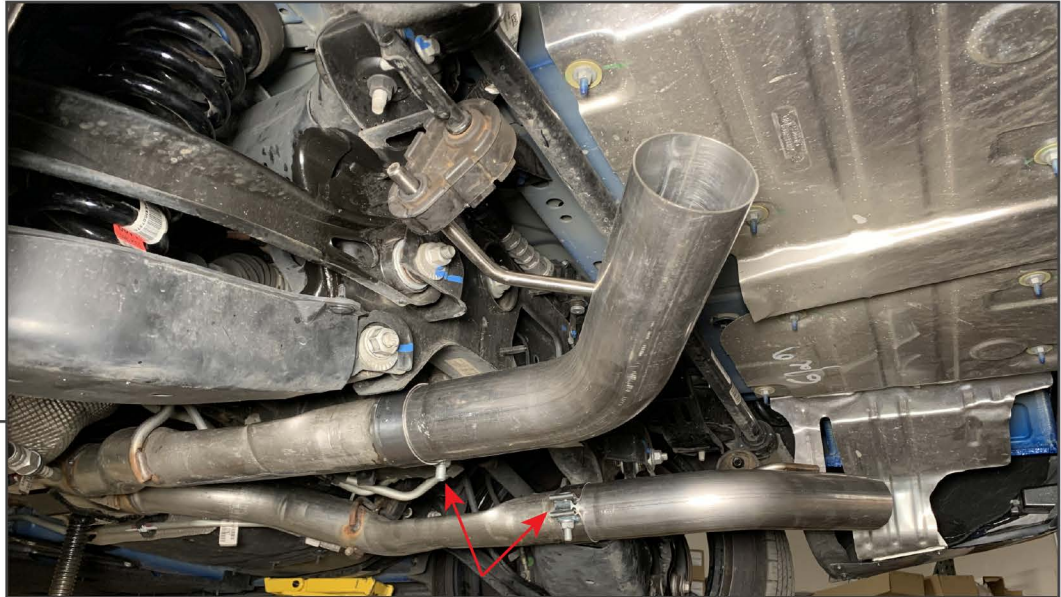
Vehicles equipped with exhaust valves: Remove the (3) bolts securing each valve from the muffler. Secure the valve to the included relocation bracket.

Remove (2) 7mm screws under the bumper securing the heat shield to the bumper. Separate the shield and bumper gently and fit the relocation bracket in between the two panels and secure using the (2) 7mm screws. Plug in the exhaust valve once secure.



---

### STEP 3



Place (1) 2.75" exhaust clamp onto the end of each vehicle exhaust pipe. Place each front pipe into each the rubber hanger, and insert the front pipes onto the vehicle exhaust pipes. Loosely secure by tightening the clamps enough to allow for adjustment later.

Place (1) 3" exhaust clamp onto the end of each front pipe to prepare for the tail pipes.

---

### STEP 4



Insert each tail pipe into the rubber hanger behind the rear bumper. Then, insert the tail pipe into the previously installed front pipe. Loosely secure using the previously placed 3" exhaust clamp.

Note: The front pipes can fit onto the vehicle exhaust until the crushed portion under the differential to assist assembly.



## STEP 5

Loosely install the (4) exhaust tips using (4) 3" exhaust clamps. Adjust the exhaust as necessary to fit within the bumper cutouts. Once properly aligned, tighten all exhaust clamps to 45 ft.-lbs.

Installation is now complete.