



COLD AIR INTAKE

(2010-2011 CAMARO 3.6L)

INSTALLATION INSTRUCTIONS

CONTENTS

(1) Intake Tube	(1) Rubber Seal
(1) Heat shield pc 1	(1) Hex bolt M6x15
(1) Heat shield pc 2	(1) Lock nut M6
(1) Heat shield bracket	(2) Washer M6
(2) Machine screws M4	(1) 10mm Breather Hose
(1) 3.5"-4" Coupler	(1) MAF adapter sleeve
(3) 3.5" Hose clamp	(1) Throttle body adapter
(1) 4" Hose clamp	(2) Allen bolt
(1) 6" Hose Clamp	(2) Flat washer
(1) 3.5" 90deg coupler	(2) Locknuts
(1) Velocity stack adapter	(1) Allen wrench
(1) Air Filter	

TOOLS REQUIRED

5/16" Nut driver (or flat blade screwdriver)
10mm Socket
7mm Socket
T-20 Torx
Ratchet
Socket Extension
5mm Allen Wrench



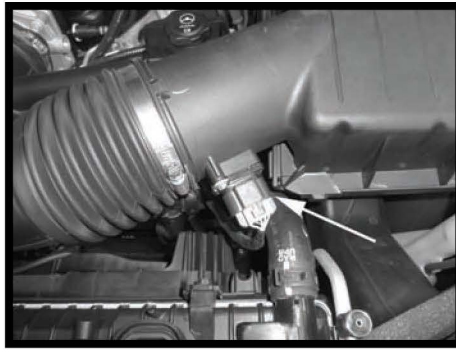
Step 1

Safety first! Before you begin the installation, make sure that the vehicle is in park (or neutral for a manual transmission) with the parking brake set. Disconnect the negative battery terminal and verify that all components that are listed are present. Note: This kit was designed and tested on a stock engine without any custom tuning done to the engine computer. Removing the battery cable may erase the programmed radio stations. The anti-theft code will need to be entered into some radios after the battery cable is connected. The anti-theft code can typically be found in the owner's manual or at your local dealership.



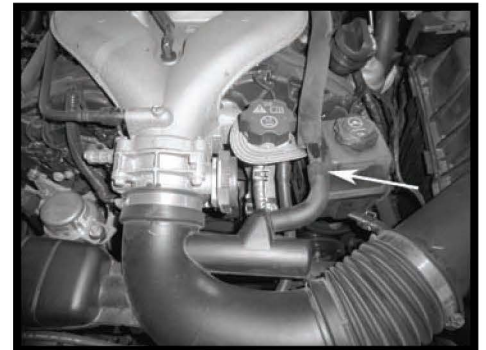
Step 2

Remove oil filler cap and lift the plastic engine cover off. Reinstall the cap to prevent anything from getting inside the engine.



Step 3

Disconnect the electrical connector on the Mass Air Flow Sensor (MAFS).



Step 4

Remove the hard PCV line from the rubber 90deg hose by pulling the line firmly out.



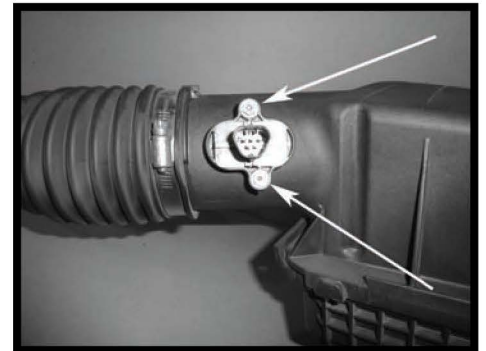
Step 5

Loosen the clamp at the throttle body.



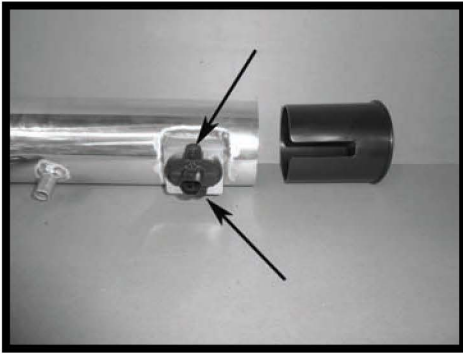
Step 6

Remove the two mounting nuts on the air filter box. Lift then entire air box assembly out of the engine compartment. One of the nuts will be used in Step 11.



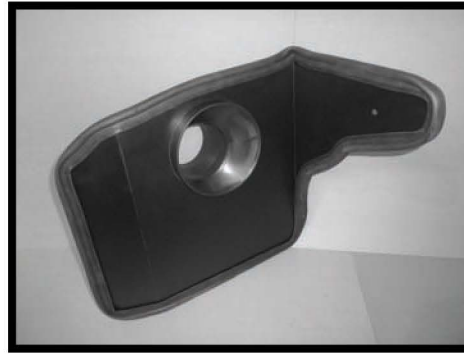
Step 7

Remove the MAFS from the factory intake.



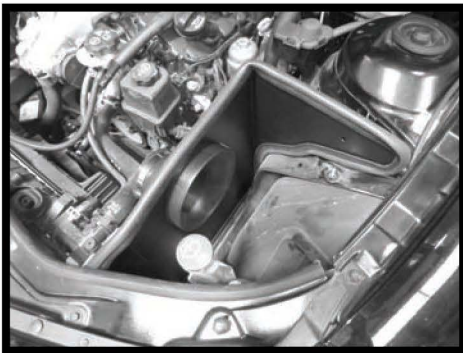
Step 8

Insert and fasten the MAFS onto the Spectre Performance intake tube with the provided machine screws. Insert the MAFS sleeve into the intake tube (note position of slot to allow clearance for the MAFS).



Step 9

Using the supplied hardware, assemble the heat shield with the tabs placed on the outside of heat shield. Install the rubber bulb seal. Place the velocity stack adapter in the heat shield and install the supplied flex coupler making sure the coupler is pushed completely against the heat shield. Take note of the orientation of the funnel, this may be rotated slightly once the filter is installed in the vehicle. Once the adapter and coupler are tight against the heat shield, tighten the clamp.



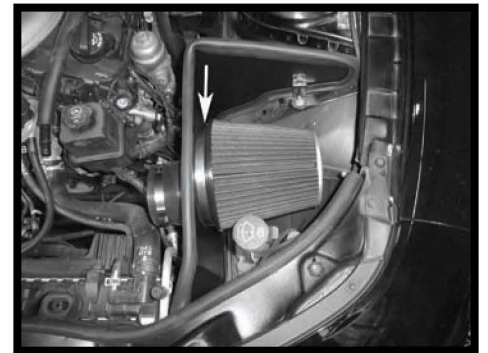
Step 10

Install the heat shield by sliding the heat shield under the lip of the radiator support and in position as shown.



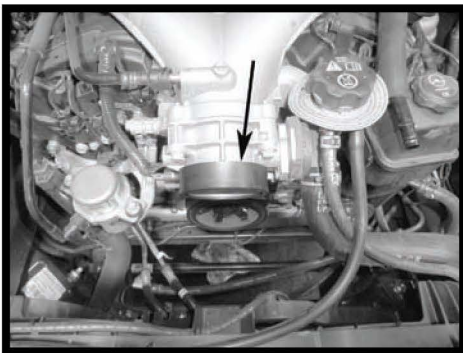
Step 11

Install the heat shield bracket onto the stud of the inner fender and using the factory nut removed in Step 6, fasten securely. Using the supplied hardware, fasten the bracket to the heat shield.



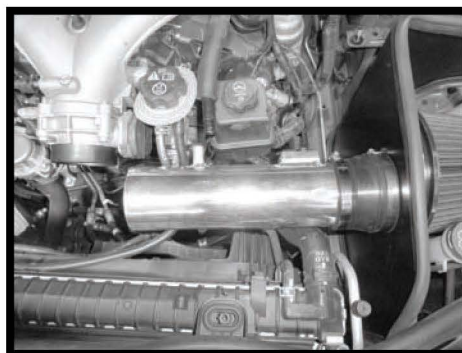
Step 12

Install the filter on the velocity stack adapter and fasten it securely.



Step 13

Install the throttle body adapter onto the throttle body.



Step 14

Install the Spectre Performance intake tube on the coupler that is on the heat shield with the breather tube pointing towards the motor. Once in position, fasten it securely using the supplied clamp.



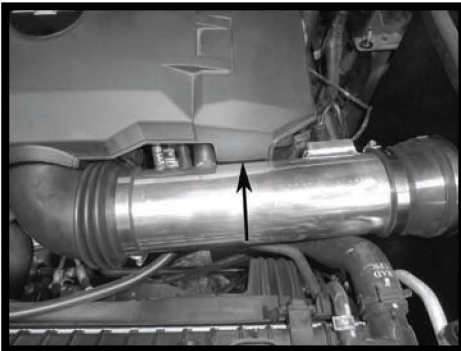
Step 15
Install the 90° coupler with the flex end on the intake tube. Once on the tube, place the other end of the coupler over the throttle body. Once the filter is set in location to clear the reservoir, fasten the couplers in place.



Step 16
Install the vent hose to the intake tube and to the hard PCV line.



Step 17
Plug in the connector for the mass air flow sensor.



Step 18
To reinstall the engine cover you may need to trim the cover where the arrow is showing. Reinstall the oil fill cap.



Step 19
Start vehicle and let warm up. Shut off and inspect the installation once more for any loose clamps or wires. Test drive & enjoy!