



S1 COILOVER KIT - NON-ADJUSTABLE DAMPENING

(2005-2014 MUSTANG)

INSTALLATION INSTRUCTIONS

CONTENTS

- (2) Front Coilover Struts
- (2) Front Sway Bar Links
- (2) Rear Springs
- (2) Rear Shocks
- (2) Rear Spring Perches
- (1) Large Spanner Wrench
- (1) Small Spanner Wrench
- (1) Allen Key

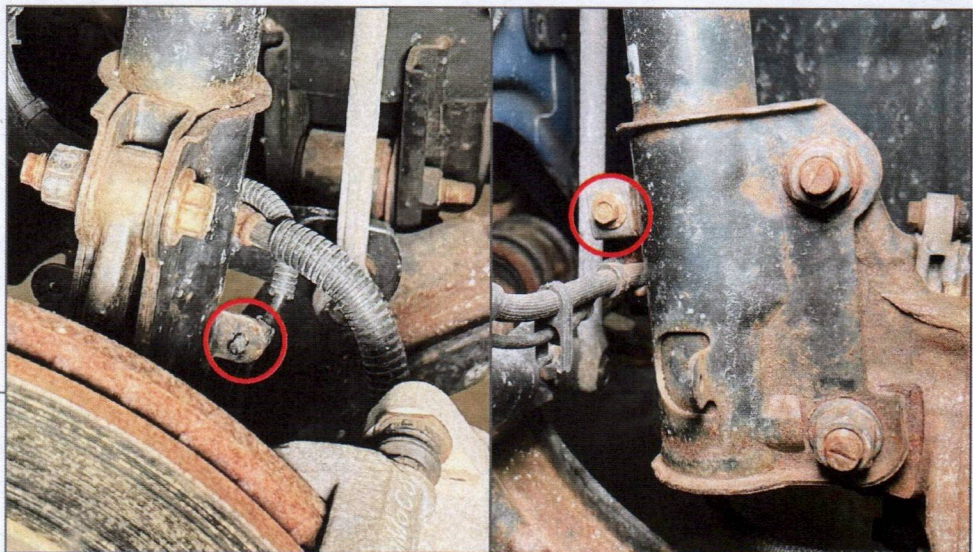
TOOLS REQUIRED

- 8 - 21mm Sockets/Wrenches
- Ratchet / Breaker Bar
- Panel Removal Tool
- Floor Jack & Jack Stands

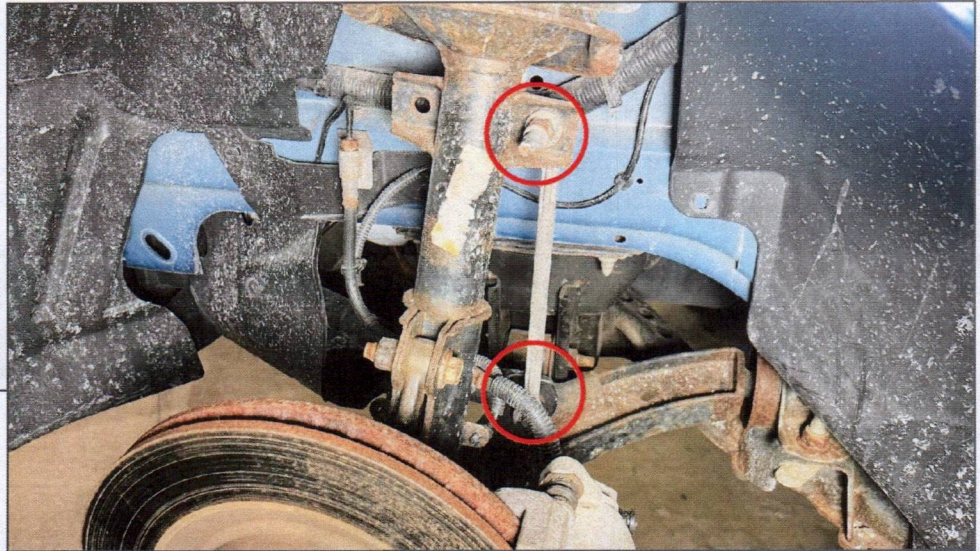
SKU # 467062

STEP 1
[FRONT]

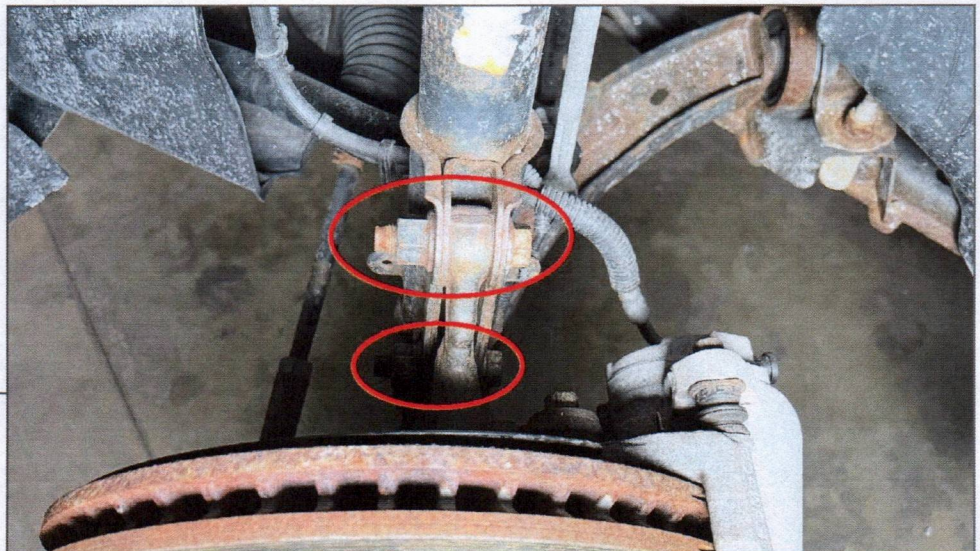
Safely lift and support the front of the vehicle using a floor jack and jack stands. Remove the front wheel from the vehicle to access the suspension components.

STEP 2

Remove (1) plastic retaining clip securing the ABS line to the bottom of the shock. Then, remove (1) 10mm bolt securing the brake line to the shock absorber.

STEP 3

Remove the (2) 18mm nuts securing the sway bar link to the shock absorber and the sway bar, and remove from the vehicle. If the sway bar link joint spins when loosening the nut, hold the joint using a 8mm socket and use a wrench to loosen the nut.

STEP 4

Behind the brake rotor, remove (2) 21mm nuts from the lower shock absorber mounting nuts.

The OEM bolts have splines securing the bolt into the steering knuckle. Support the lower control arm to relieve suspension tension, and hammer the bolts from the steering knuckle/shock absorber.

STEP 5



Open the vehicle hood. Remove the (4) 13mm nuts securing the top of the shock absorber to the strut tower.

STEP 6



Remove the shock absorber assembly from the vehicle.

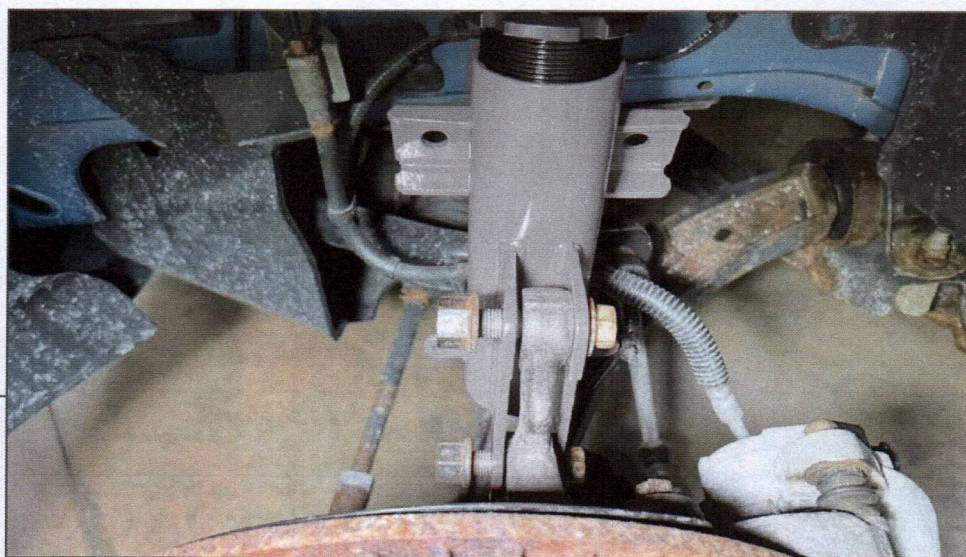
STEP 7



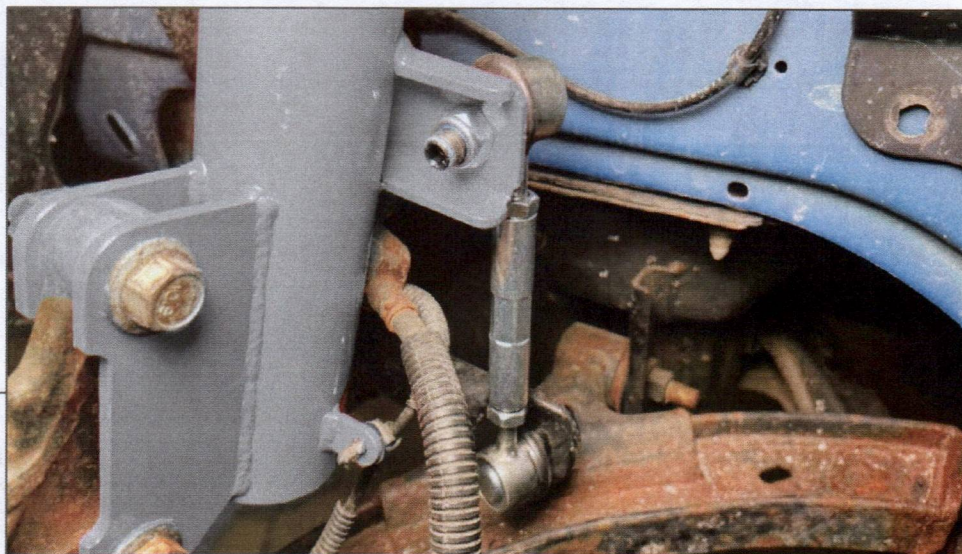
Fit the top of the coilover assembly into the strut tower holes, and loosely secure using the included (4) flange nuts.

Do not tighten the flange nuts at this time. Only tighten the nuts when the vehicle is on the ground with the suspension loaded.

STEP 8

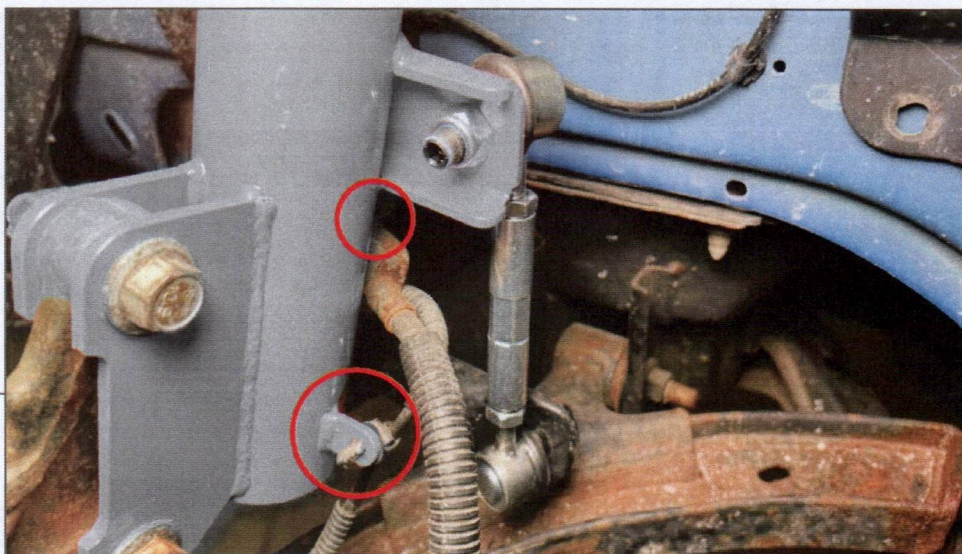


Secure the bottom of the coilover assembly to the vehicle steering knuckle reusing the original (2) lower bolts & nuts.

STEP 9

Fit the new sway bar link to the sway bar and the coilover assembly, and secure into place using the provided lock nuts.

Note: The sway bar links must be adjusted with the vehicle suspension loaded. This is recommended to be done with the vehicle on ramps after the desired ride height is set. The sway bar must be parallel with the vehicle frame when properly adjusted. Ensure jam nuts are tight after adjusted to desired angle.

STEP 10

Secure the brake line to the coilover assembly using the included (1) M6 bolt and (1) M6 nut. Then, fit the ABS line plastic clip into the coilover bracket.

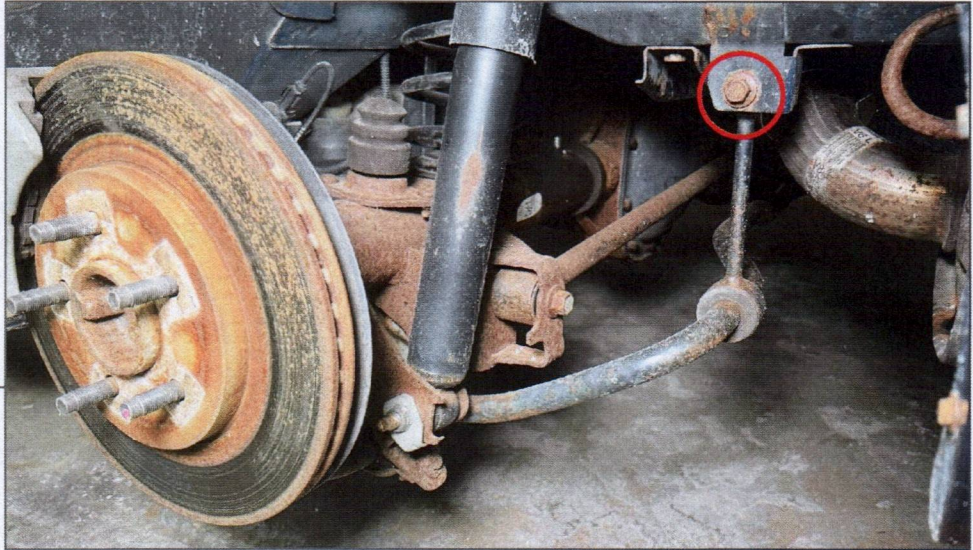
STEP 11

To adjust ride height, loosen the lower collar and turn the coilover assembly up/down to adjust the ride height.

To ensure the collars remain tight after tightening with the spanner wrenches, use a punch and a hammer to lock the collar into place.

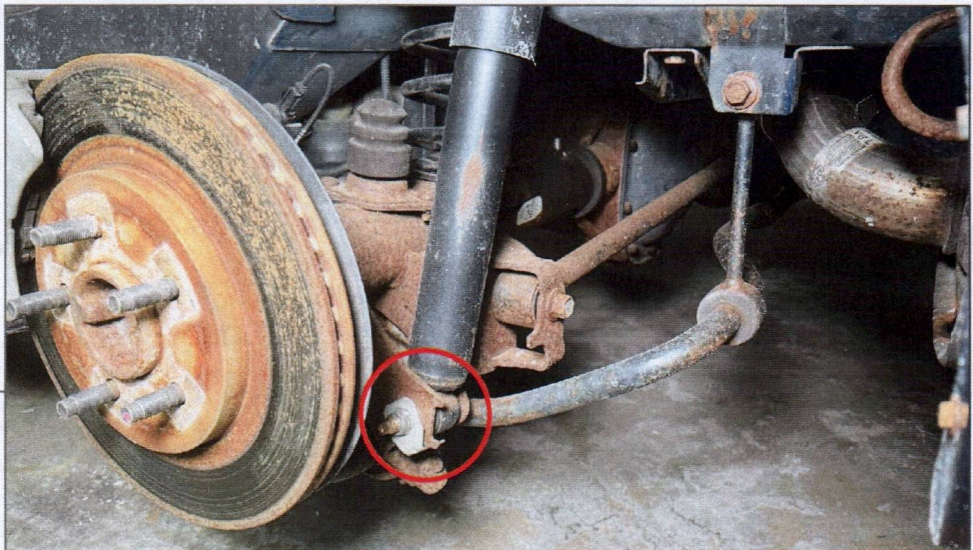
STEP 12
[REAR]

Open the vehicle trunk, and remove the trunk liners by removing various plastic clips. Then, remove the upper shock absorber nuts to remove each shock absorber from the body.

STEP 13

Safely lift and support the rear of the vehicle using a floor jack and jack stands. Remove the rear wheels from the vehicle to access the suspension components. Support the center of the rear axle using a floor jack.

Remove the sway bar link from the body using by removing (1) 15mm bolt & nut plate from each side of the vehicle.

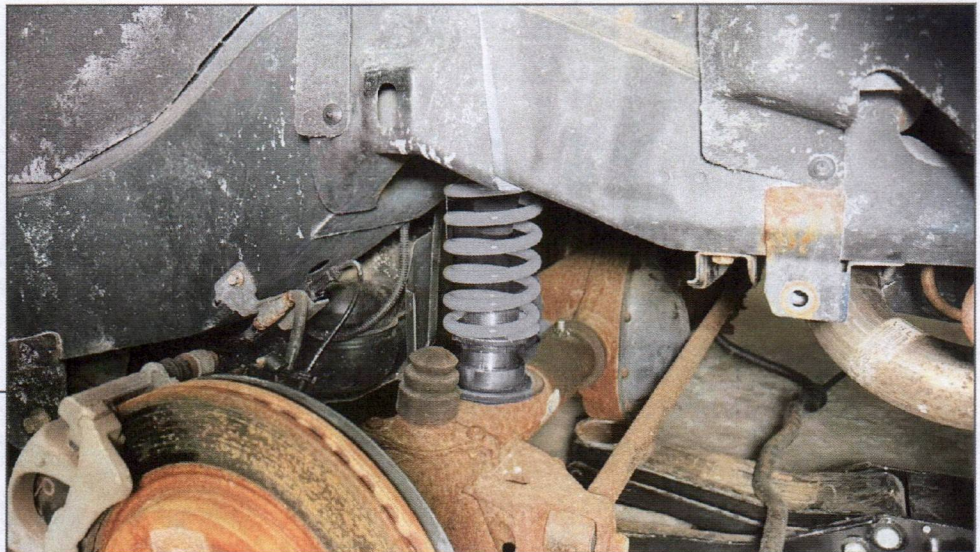
STEP 14

Remove the shock absorber from the axle by removing (1) 15mm bolt & nut plate from each side of the vehicle.

Remove the shock absorbers from the vehicle.

STEP 15

Lower the floor jack to allow the rear axle to lower from the vehicle. Remove the coil springs from the rear axle. Allow the upper and lower spring isolators to remain in the vehicle.

STEP 16

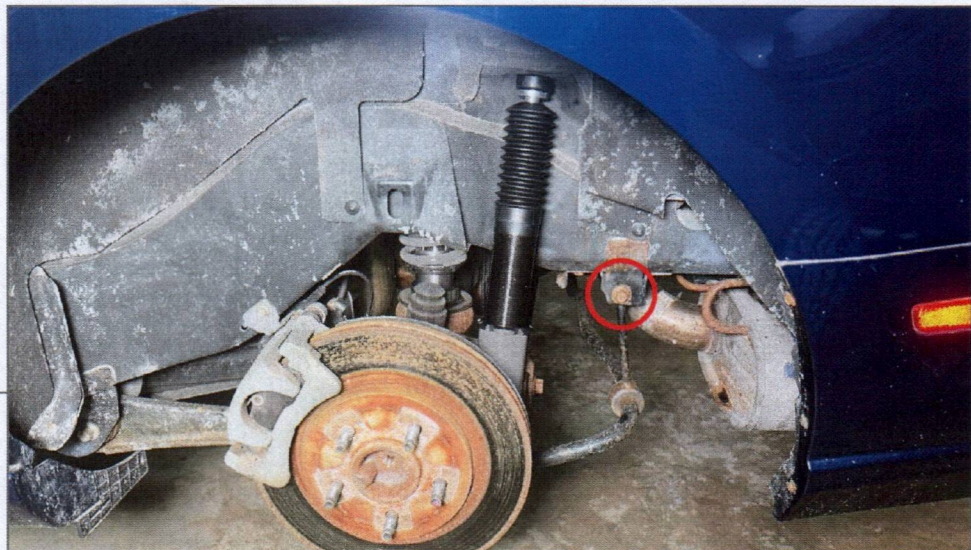
Fit the spring perch onto the rear axle isolator. Place (1) metal perch washer onto the perch, and then install the coil spring to the spring perch. Adjust the collar to the desired ride height.

Note: For the initial ride height, it is recommended to set the perch to the minimum (highest possible ride height) to provide a base line. Then, after the vehicle is re-assembled, lower as necessary until the desired ride height is achieved.

STEP 17

Fit the top of the new shock absorber through the vehicle body. Then, loosely install the top of the shock absorber to the body through the trunk using (1) rubber bushing and (1) flange nut included with the shock absorber.

Loosen the shock absorber collar. Lift the vehicle rear axle to lightly apply pressure to the coil springs. Then, adjust the shock absorber to meet the axle mount, and secure the mount into the axle using the original hardware.

STEP 18

Re-install the vehicle sway bar links to the vehicle body using the original hardware.



STEP 19

When adjusting the ride height, to ensure the collars remain tight after tightening with the spanner wrenches, use a punch and a hammer to lock the collar into place.

To adjust the front caster/camber plates, removing the front coilover assembly is required, and adjust to the desired specification using the included Allen key.

Professional alignment is required to ensure proper tire and prevent suspension wear.

Installation is now complete.