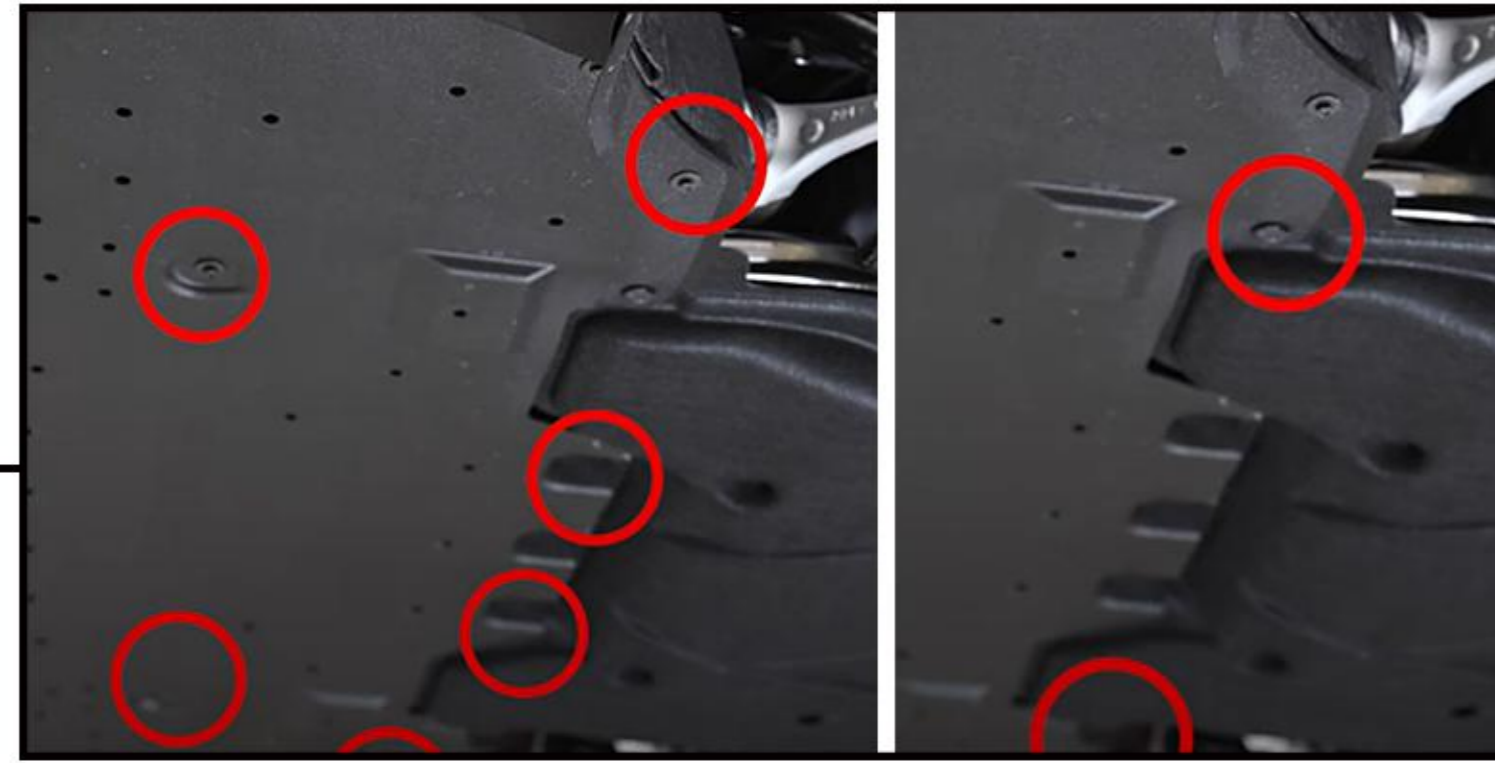




Installation Guide

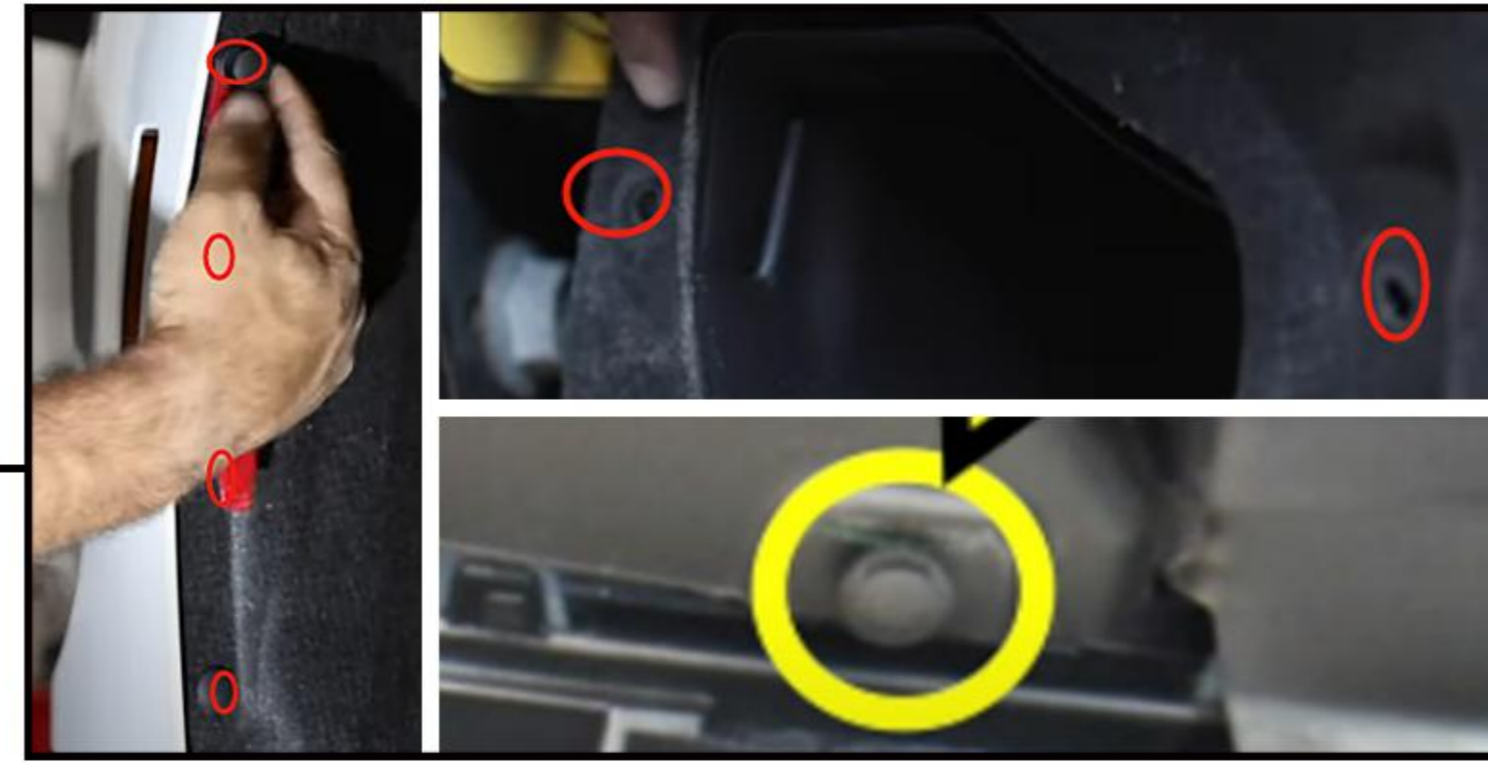
Knife Style Front Upper Grille
W/ LED DRL and Turn Signals
For 24+ Ford Mustang
SKU # AMFMCA00105 & AMFMCA00620

STEP 1



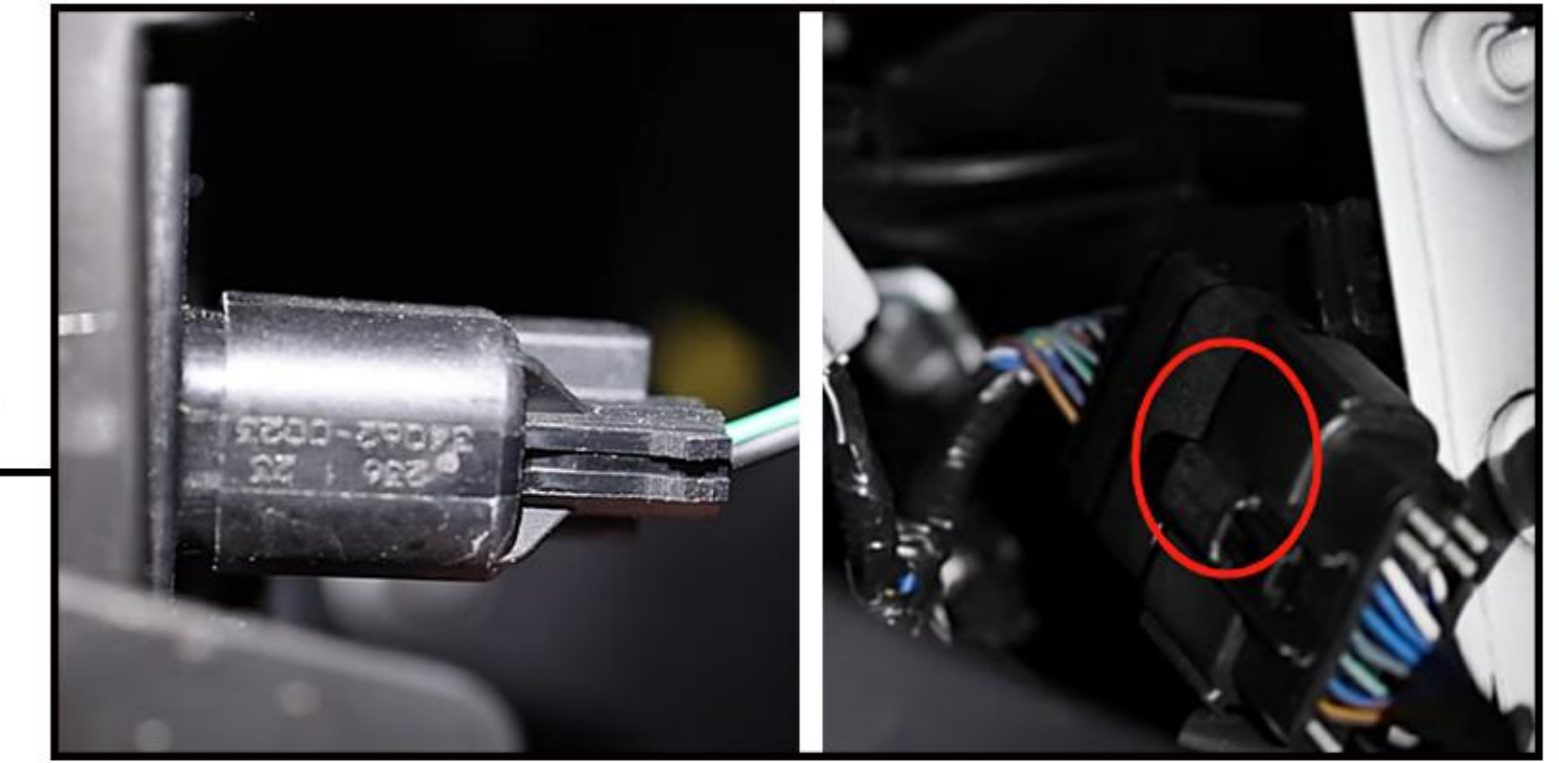
Remove these 6 screws in the debris shield underneath the car with a 7mm socket. Then pry the center post out of these 2 plastic rivets and remove.

STEP 2



Remove the four plastic rivets from both of the fender liners. For performance pack cars, remove the four plastic rivets from both the fender liners followed by removing these 2 small rivets in the brake cooling Ducks, then remove the single plastic rivet in the cooling duck inlet to lower grille and remove them from the vehicle.

STEP 3



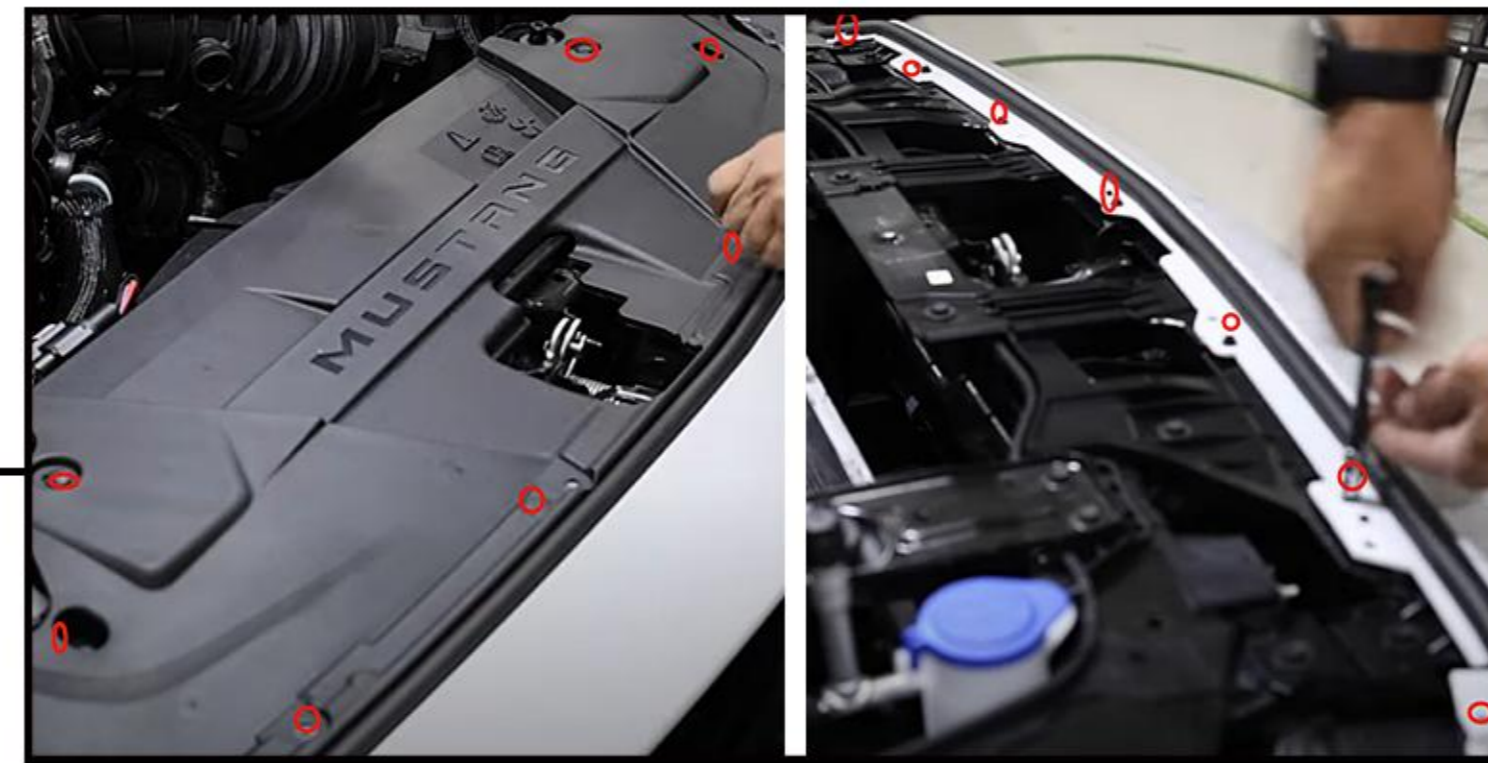
With the fender liner pulled back, locate and disconnect the side marker lights inside the bumper cover. Then locate and disconnect the bumper wiring harness on the driver's side of the car which is attached to the crash pad.

STEP 4



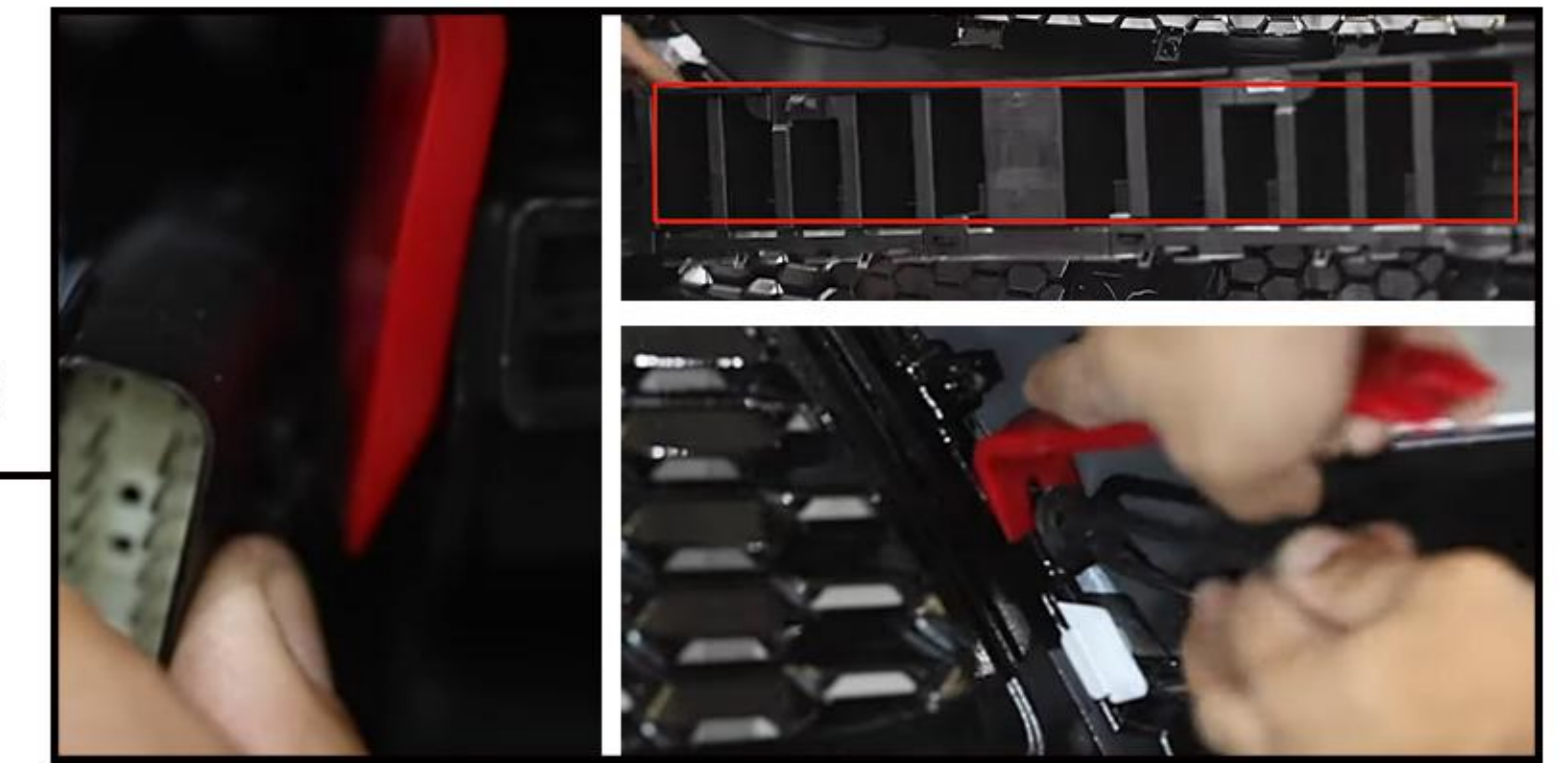
Behind the headlights will find 2 bolts securing the bumper corner, remove the 2 bolts with a 10 mm socket and repeat the step on the opposite side of the vehicle. Pry the fender anchors out from the fenders with a panel clip removal tool after applying a little painter tape.

STEP 5



Remove the 8 plastic rivets in the core support cover and remove the cover from the vehicle. Use a 7 mm socket to remove the 5 screws along the upper bumper cover. Carefully remove the weather strip foam from the cleat in the core support on both sides of the vehicle. Lift the bumper cover up and over the core support posts and remove the cover.

STEP 6



Pry the large multi-pin connector from energy absorber with a panel clip removal tool. Pull the energy absorber from the bumper with light pressure. Locate and disconnect the OEM grille lights on both side of the grille. Pry the light harness anchors out of the both sides of the upper grille with a panel clip removal tool. Then use the 7 mm socket to remove the 2 screws securing the lights to the grille and remove the lights.

STEP 7



Depress the locking tabs on the retainer clips and slide them towards the center of the grill to remove them, then remove the OEM grille from the bumper cover. Align the bumper cover tabs with the slots in the new grille to install it. Reinstall the retaining clips into the center of the bumper cover. Press the OEM harness anchors into the slots in the side of the new grill. Reinstall the energy absorber and reattach the multi-pin connector.

STEP 8



(1) Connect the new grille light plugs to the OEM grille light wiring harness; **Note: Connect the "L" plug to the driver side OEM grille light wiring harness; Connect the "R" plug to the passenger side OEM grille light harness.** (2) Connect the red wire to ACC; the black wire to the negative terminal of the battery.

STEP 9



Follow the step 1-5 in reverse order to reinstall the bumper to the vehicle to complete the installation.