



PERFORMANCE COLD AIR INTAKE

(2018-2023 MUSTANG GT)

INSTALLATION INSTRUCTIONS

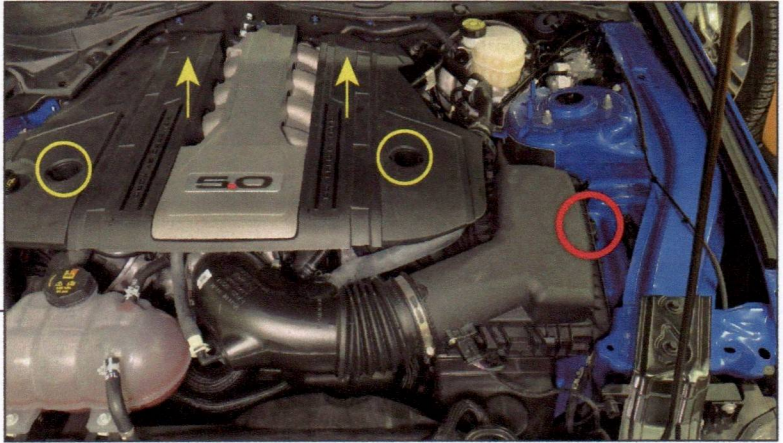
CONTENTS

- (1) Intake Housing
- (1) Intake Lid
- (1) Intake Tube
- (1) Large Coupler w/ Clamps
- (1) Small Coupler w/ Clamps
- (1) MAF Adapter w/ Foam Gasket
- (1) MAF Housing
- (1) MAF Insert
- (1) MAF Housing to Intake Grommet
- (1) Air Filter w/ Clamp
- (1) Sound Tube Delete Grommet
- (1) Large PCV Fitting
- (1) Small PCV Fitting
- (2) 8-32 x 0.75" Phillips Bolts
- (2) Metal Flat Washers
- (6) 8-32 x 0.40" Phillips Bolts
- (6) Black Plastic Washers

TOOLS REQUIRED

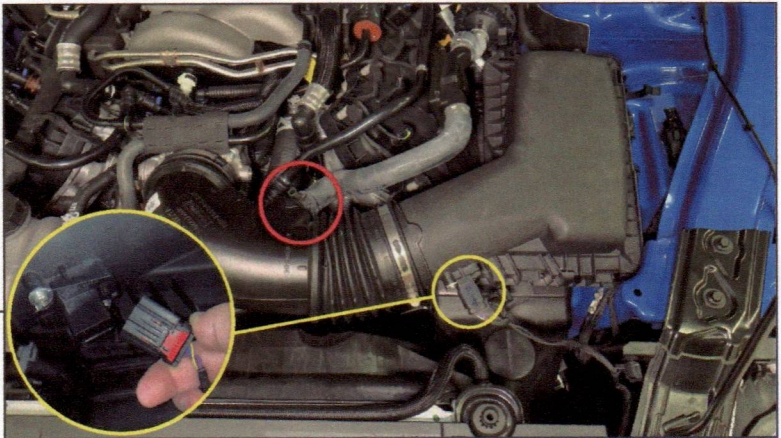
- 7, 8, 10mm Sockets
- T-15 Torx Socket
- Ratchet
- Panel Removal Tool
- Phillips Screwdriver
- Adjustable Wrench

SKU # 463168



STEP 1

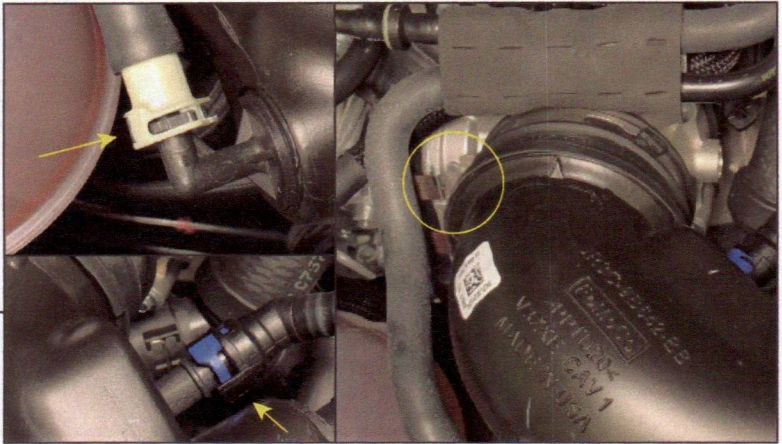
Open the vehicle hood. Remove the (2) plastic covers on top of the engine cover using a flathead screwdriver. Remove the (2) 10mm nuts inside the cover. Firmly lift up on the cover, starting at the back, and remove the cover from the vehicle. Remove (1) 10mm bolt from the side of the air box.



STEP 2

Locate the MAF sensor along the intake tube. Slide the red lock back, and press the connector tab while unplugging the connector. Use a panel removal tool to dislodge the MAF harness retainers from the intake air box.

Using a set of pliers, disconnect the sound tube from the intake tube.



STEP 3

Press and unplug the PCV hoses routed to the intake tube.

Loosen the (1) 8mm hose clamp securing the intake tube to the throttle body.



STEP 4

Lift and remove the intake assembly from the vehicle.

Place the intake on a workable surface. Transfer the intake bolt grommet/sleeve and the intake mounting grommet from the original intake to the new intake housing.



STEP 5

Fit the MAF insert into the MAF housing, ensuring the MAF slot is aligned when fully inserted.

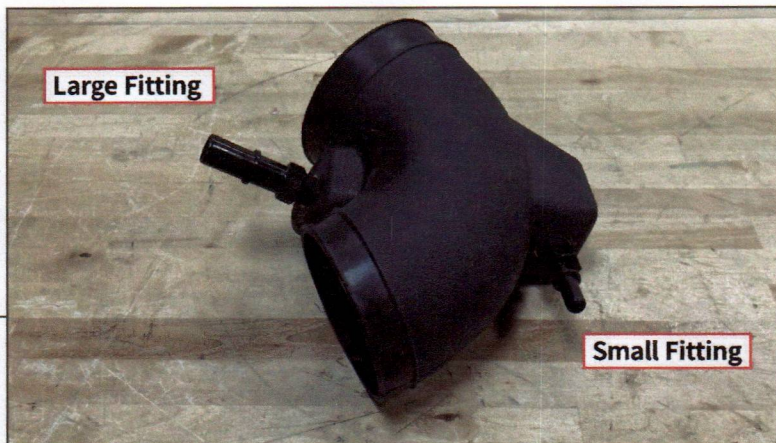


STEP 6

Remove the MAF sensor from the original intake using a T-15 Torx socket. Then, fit the included MAF gasket and adapter to the MAF sensor and install the assembly into the new intake tube using the included (2) 8-32 x 0.75" and (2) metal flat washers.

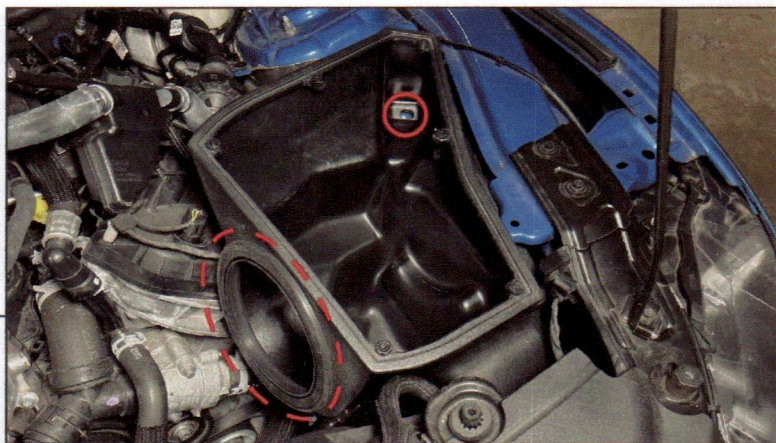


STEP 7



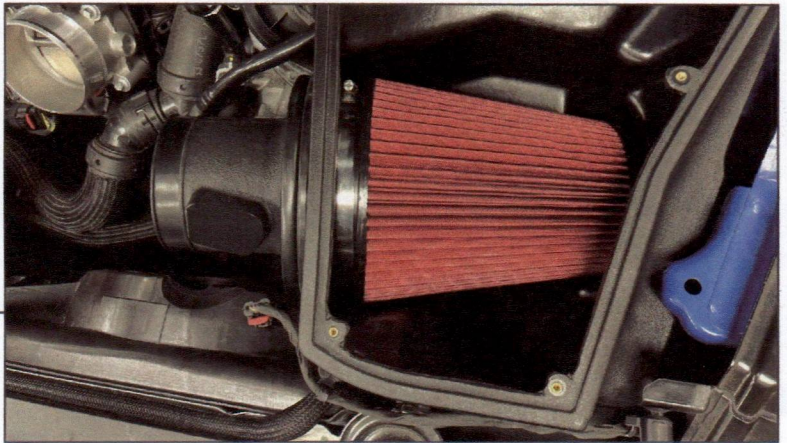
Using an adjustable wrench, thread each PCV fitting into the new intake tube. Use the original intake tube as a reference to ensure the grommets are installed on the correct side of the intake tube.

STEP 8



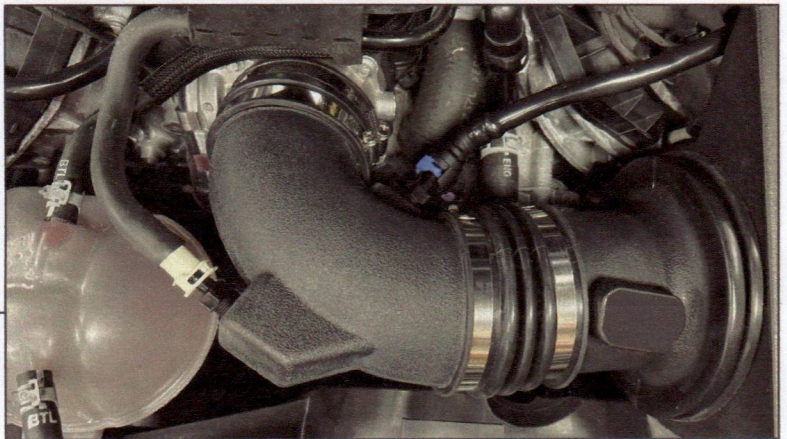
Fit the intake housing into the vehicle, ensuring the intake routes around the vehicle air duct. Secure the intake housing to the vehicle using the original (1) 10mm bolt.

Fit the included air filter hole grommet into the air filter housing.



STEP 9

Fit the air filter into the intake housing. Fit the MAF housing assembly through the silicone grommet, and into the air filter. Tighten the air filter clamp to secure the MAF housing to the air filter.



STEP 10

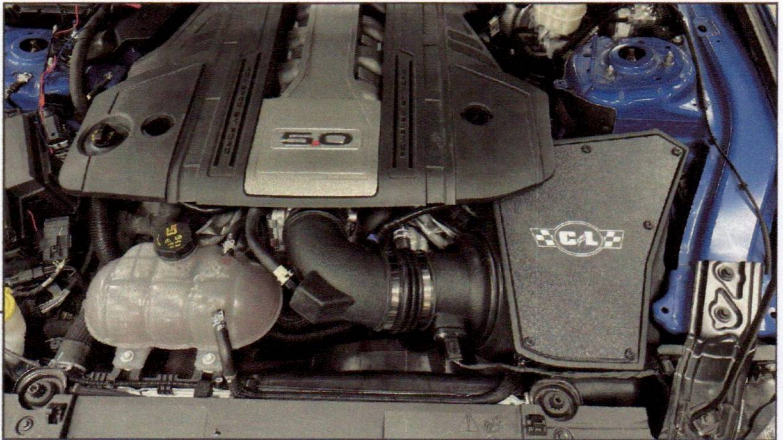
Fit the included intake couplers with clamps to the intake tube. Fit the intake tube to the MAF housing and the throttle body. Fit each PCV hose into the corresponding fittings.

Tighten all hose clamps until the intake tube is secure.



STEP 11

Install the intake lid to the intake housing using (6) 8-32 x 0.40" Phillips bolts and (6) plastic washers.



STEP 12

Remove the sound tube from the vehicle firewall, and install the provided sound tube delete grommet into the firewall.

Fit the vehicle engine cover to the vehicle, and secure using the original (2) 10mm nuts. If necessary, trim the engine cover for best fit.

Installation is now complete.