



# CARBON FIBER STEERING WHEEL

(2024+ MUSTANG)

---

## INSTALLATION INSTRUCTIONS

### CONTENTS

---

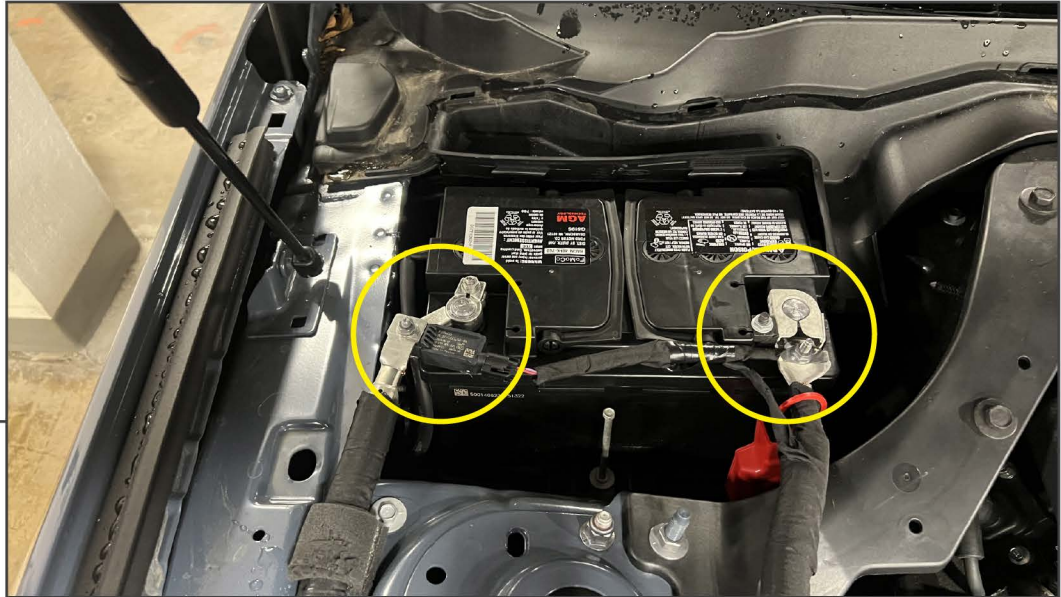
(1) Steering Wheel

### TOOLS REQUIRED

---

10mm Socket  
T-50 Torx Socket  
T-10, T-15, T-20 Torx Sockets  
Ratchet  
Torque Wrench  
3mm Allen Key  
Flathead Screwdriver  
Small Pry Tool  
Masking Tape

SKU # 463167



**STEP 1**

Ensure the vehicle is parked with the front wheels facing straight ahead (steering wheel straight).

Open the vehicle hood. Loosen the battery cable terminals and disconnect the terminals from the vehicle battery. Allow the vehicle to sit for at least 10 minutes to ensure the system is discharged.



**STEP 2**

Behind each of the three steering wheel spokes, locate the small hole in the steering wheel trim. Using a 3mm Allen key, fit the Allen key into the hole to press the air bag retaining spring inwards to disconnect the air bag from the steering wheel. With the spring depressed, gently pull the air bag away from the steering wheel. Only dislodge one side of the air bag at a time.

**Note:** It is best to aim the inserted end of the Allen key straight into the hole, do not angle the Allen key as the spring can be missed. This can be difficult, take your time. See the reference photos above.





**STEP 3**

With the air bag removed from the steering wheel, unplug the upper-most connector by pressing the tab and pulling the connector away. The tab is along the back of the air bag, a small pry tool may be necessary to properly press the tab.



**STEP 4**

Using a small pry tool, lift the orange connector locks away from the connector, and then remove the two yellow connectors from the air bag.

Set the air bag aside.

**STEP 5**



Unplug the steering wheel controls connector by pressing the tab and pulling the connector away.

**STEP 6**



While holding the steering wheel in place, use a T-50 Torx socket and a ratchet to loosen and remove the steering wheel retaining bolt.



---

**STEP 7**



Firmly move the steering wheel to disengage the wheel from the steering column. While removing the steering wheel, carefully route the clock-spring wiring harness out of the steering wheel. Ensure the clock-spring remains in the original position. If the clock-spring moves slightly during steering wheel removal, gently move back to the original starting position.

**Note:** It is recommended to tape the clock-spring in place with masking tape while the steering wheel is removed to prevent accidental movement.

---

**STEP 8**



Place the original steering wheel face down on a workable surface for disassembly.

During disassembly, take note to the locations of each screw, some screw sizes are different. It is recommended to lay each screw out in a pattern similar to removal to ensure the correct installation location.



**STEP 9**

Begin to disassemble the steering wheel by removing (4) T-15 Torx screws from the center of the steering wheel.

Remove (2) T-10 Torx screws from the bottom of the steering wheel.

Removing these screws will allow the front steering wheel controls to be removed.

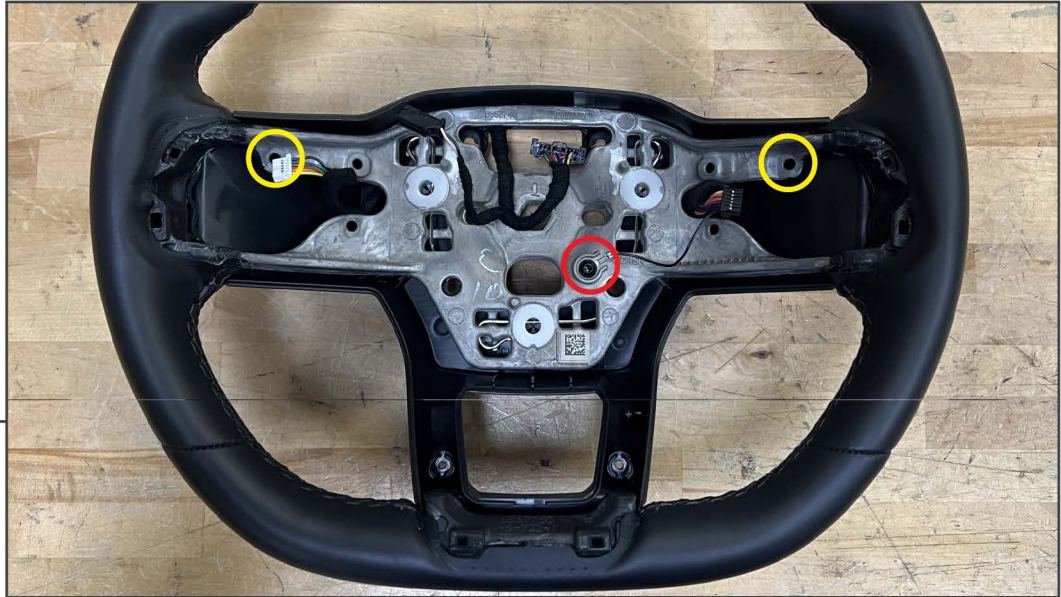


**STEP 10**

Using a pry tool around the steering wheel controls bezel, lift the steering wheel controls from the steering wheel. The bezel is only retained by dowels in the steering wheel foam.

While lifting the bezel away, unplug the steering wheel controls by pressing each connector tab. If the connectors feel stuck, while pressing the tab, push in and then outward on the connector.





**STEP 11**

Remove (1) T-20 Torx screw the steering wheel harness ground lead.

If vehicle has paddle shifters, remove the (2) T-15 Torx screws.



**STEP 12**

Take note to how the steering wheel wiring harness is routed inside of the steering wheel. Once familiar with the routing, use a pry tool to remove the plastic trim away from the back of the steering wheel. Set the trim panel and wiring harness aside.



**STEP 13**

Locate the air bag retaining springs and white retaining clips. Using a flathead screwdriver, remove the spring from the steering wheel. With the spring removed, the white clip will fall out of the steering wheel.

**Note:** Ensure a clean working area during spring removal to ensure the springs and white clips can be retrieved if dropped.



**STEP 14**

Transfer the air bag springs and white clips to the new steering wheel in the same orientation as the original steering wheel.



**STEP 15**



Follow Steps 8-12 in reverse order to assemble the original steering wheel components to the new steering wheel using the original hardware.

**STEP 16**



Align the steering wheel to the vehicle, and route the clock-spring harness through the steering wheel. Fit the steering wheel to the steering column and secure into place using the original T-50 Torx bolt.

Torque the steering wheel retaining bolt to 46 ft. lbs.



---

**STEP 17**

Plug in the three air bag connectors, and press the air bag into the steering wheel until fully seated, the air bag will audibly click into place.

Installation is now complete.