

SPEEDFORM

UPPER GRILLE

(2013-2014 MUSTANG)

INSTALLATION INSTRUCTIONS

CONTENTS

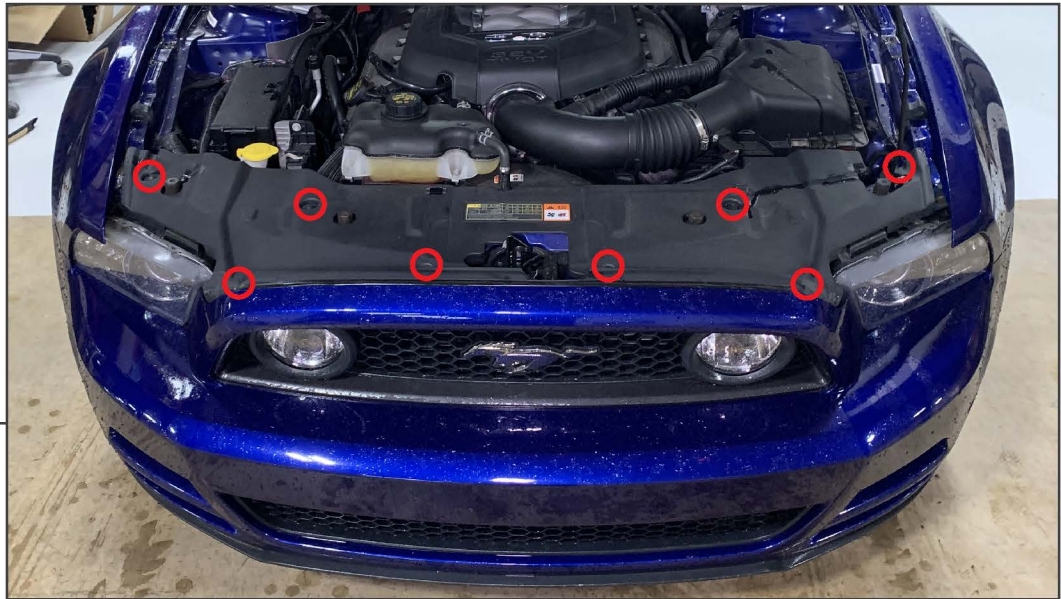
- (1) Grille Assembly
- (1) Wiring Harness
- (1) Emblem Enclosure
- (1) Emblem Bracket
- (2) Phillips Screws
- (2) Scotchlok Connectors
- (1) Fuse Tap
- (1) Ring Terminal

TOOLS REQUIRED

- 7mm, 8mm, 10mm Sockets
- Ratchet
- Panel Removal Tool
- Flathead Screwdriver
- Phillips Screwdriver

SKU # 460586

STEP 1



Open the hood. Remove the (8) plastic push clips from the radiator support cover. Remove the cover from the vehicle.

STEP 2

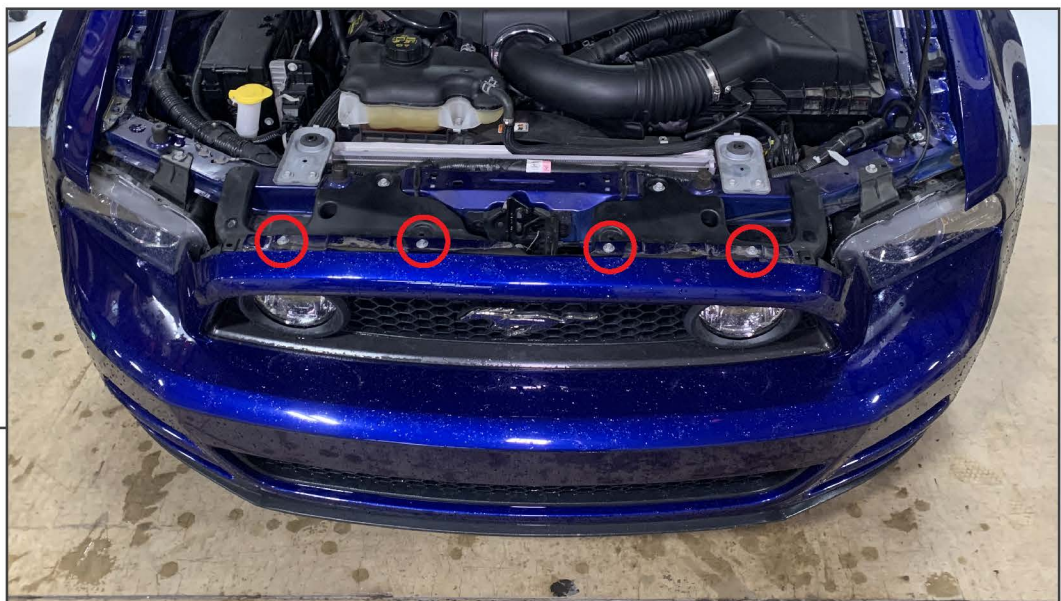


Remove (4) 7mm bolts on each side of the bumper.



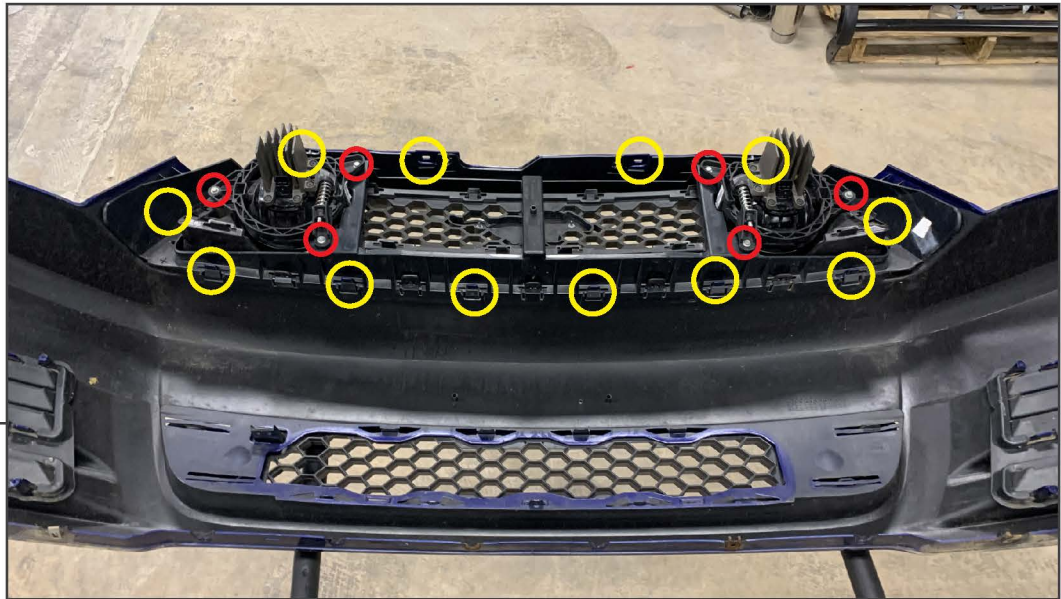
STEP 3

From under the vehicle, remove (7) 7mm bolts from the rear of the splash shield.



STEP 4

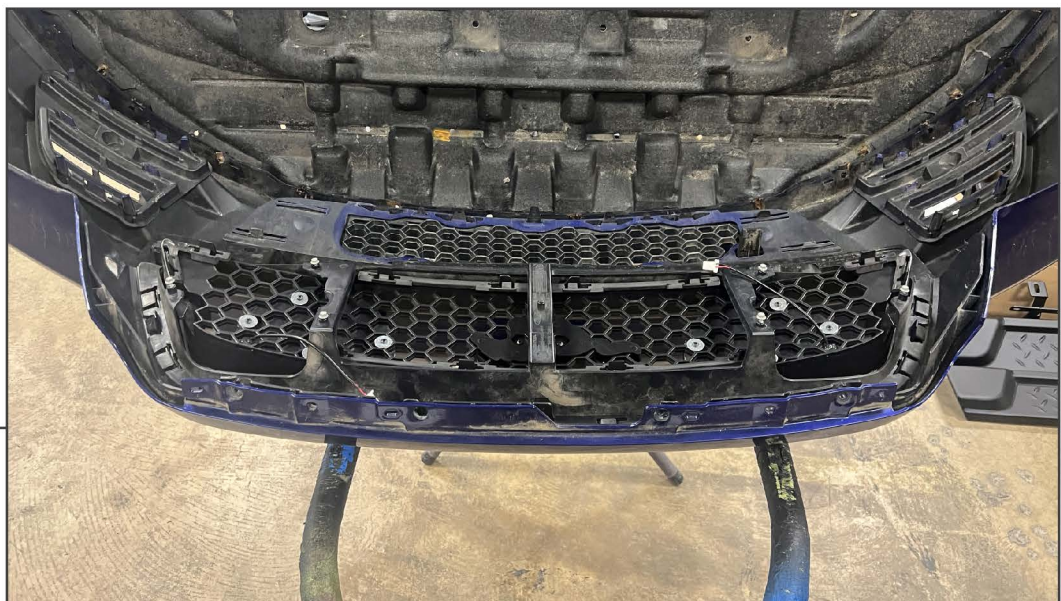
Remove (4) 8mm bolts from the top of the bumper. Pull the bumper away from the vehicle, and disconnect the wiring harnesses from the fog lights, side marker lights, and temperature sensor. Set the bumper aside on a soft surface.



STEP 5

Place the bumper on a soft workable surface. Remove the OEM fog lights by removing (3) 7mm screws per light assembly.

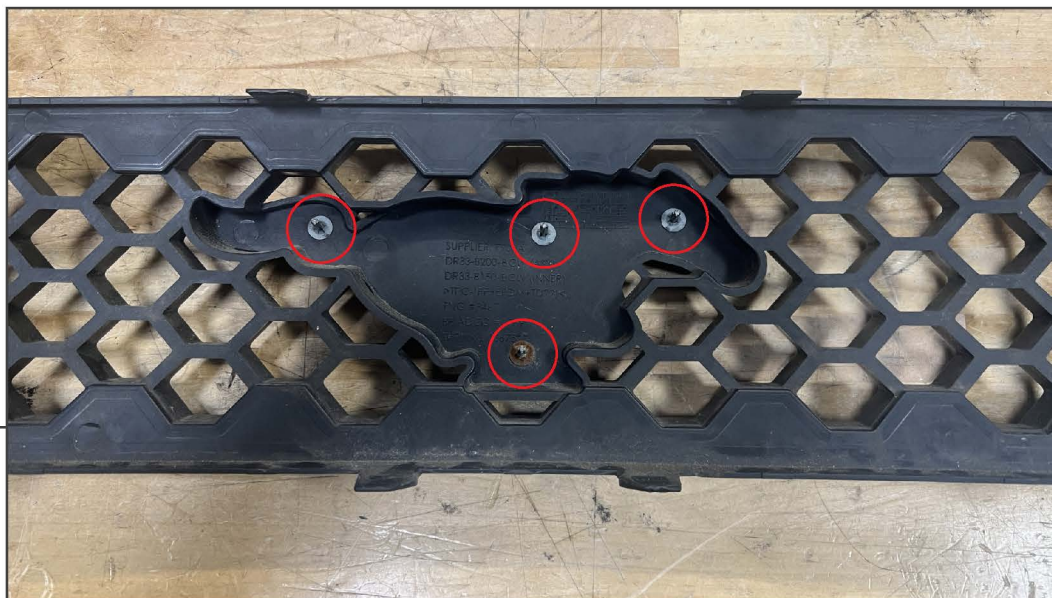
Using a flathead screwdriver, pry the mounting plastic tabs around the perimeter of the grille away to release the grille assembly through the front of the bumper.



STEP 6

Press the new grille into the vehicle through the front, and ensure all the perimeter mounting clips are securely pressed into place. Ensure the wiring harness leads are not interfering with the grille mounting areas.

STEP 7



If desired, remove the OEM pony emblem from the grille by lifting the ring retainers with a small pry tool.

Note: The pony emblem plastic posts are easy to break. Take your time to remove the ring retainers. If necessary, use the included double sided tape to secure the pony emblem to the included enclosure. Pony emblem replacement may be necessary, SKU # 53692 .

STEP 8



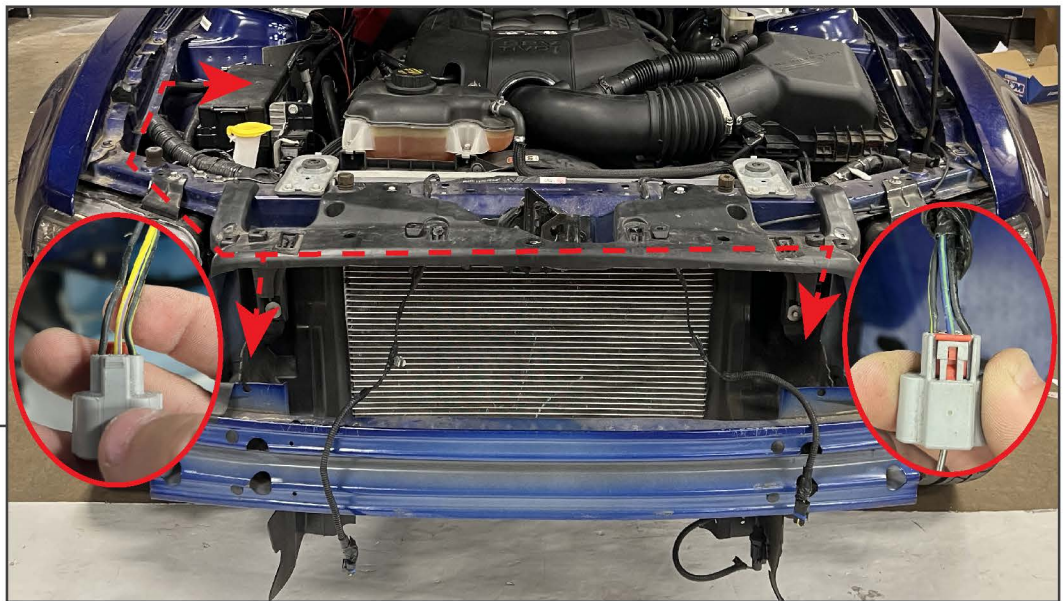
Fit the pony logo with the enclosure to the front of the grille, then fit the included pony logo bracket to the rear of the grille. Center the emblems, and secure the enclosure to the bracket using the included (2) Phillips screws.

STEP 9



Remove each headlight assembly from the vehicle by removing (3) 10mm bolts, unplug the light connectors.

STEP 10



Neatly route the wiring harness from the vehicle fuse box toward each headlight assembly.

- Connect the Red wire lead to fuse # 49 using the included fuse tap.
- Connect the Black wire lead to a suitable grounding point using the included ring terminal
- Splice the LH side yellow wire lead to the vehicle turn signal wire (Blue/Green) using the included scotchlok connector.
- Splice the RH side yellow wire lead to the vehicle turn signal wire (Yellow/Violet) using the included scotchlok connector.

STEP 11



Re-install the vehicle headlights using the original hardware, and plug in all connectors. Ensure the wiring harness is away from any hot/moving components.

Re-install the bumper to the vehicle following steps 1-4 in reverse order reusing the original hardware.

STEP 12



Installation is now complete.