

SPEEDFORM

DARK HORSE STYLE REAR SPOILER

(2024+ MUSTANG)

INSTALLATION INSTRUCTIONS

CONTENTS

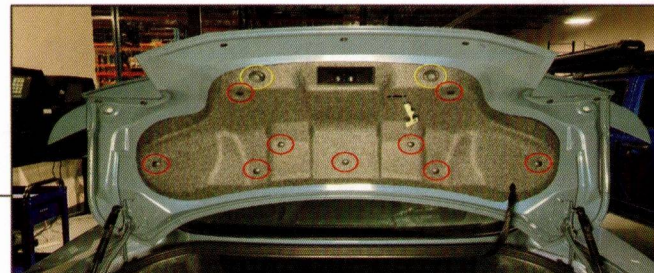
- (1) Rear Spoiler
- (1) LH End Support
- (1) RH End Support
- (1) Center Support
- (15) M6 x 15mm Flange Bolts
- (15) M6 Lock Washers
- (15) M6 Flat Washers
- (2) 4.5mm Spacers

TOOLS REQUIRED

- 10mm Socket
- T-15 Torx Socket
- Ratchet
- Panel Removal Tool
- Phillips Head Screwdriver
- Masking Tape
- Exterior Detailer
- Microfiber Cloth
- Drill & Drill Bits (Optional)
- Razor Knife (Optional)

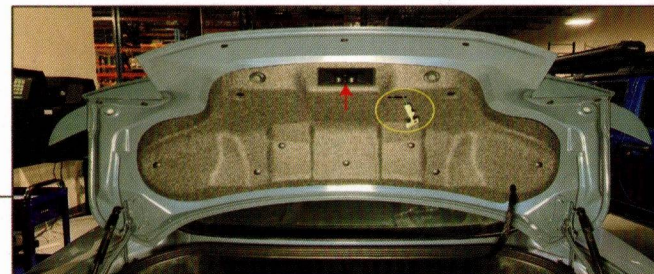
SKU # 445941 / 445942 /
445943 / 445944
Edited: 08/29/2024

SPEEDFORM



STEP 1

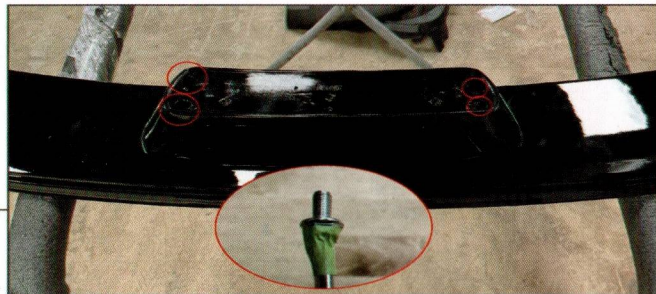
Open the vehicle trunk. Twist the (2) bump stops counter-clockwise to remove the bumpers from the trunk lid. Then, remove (9) plastic push clips from the trunk insulation.



STEP 2

Un-clip the hood latch cover from the trunk lid. Then, route the safety lever through the trunk insulation and remove the insulation from the vehicle.

STEP 11



Secure the center support panel to the spoiler using (4) M6 flange bolts, (4) M6 lock washers, and (4) M6 flat washers. Tighten all hardware evenly until the center support is fully secure, do not over-tighten.

In order to fit the flange bolts through the center support, it is recommended to use a small piece of masking tape around the screwdriver & the head of the bolt to hold the hardware in place.

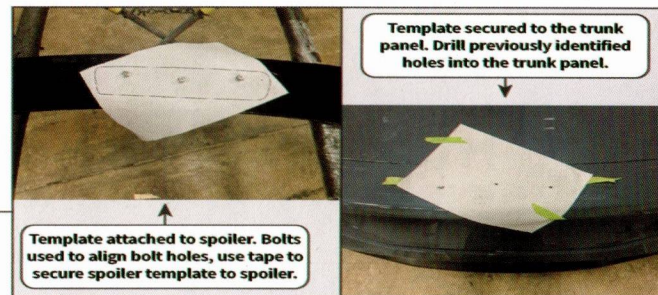
STEP 12



Align the new spoiler to the vehicle trunk panel, and loosely secure the middle support to the trunk panel using (3) M6 flange bolts and (3) M6 flat washers.

Note: Vehicles without the OEM spoiler/trunk holes, see step 13.

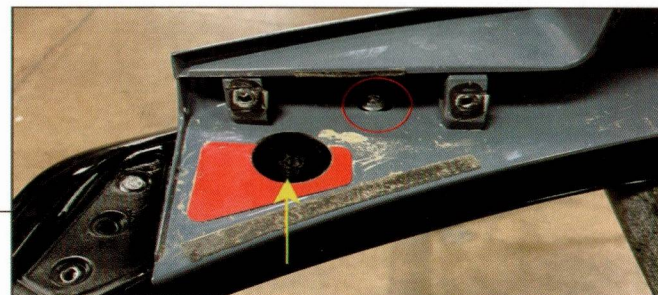
STEP 13



Vehicles without trunk panel holes: Fit the included templates to the new spoiler, aligning the spoiler bolt holes to the template and secure loosely using masking tape. Once secure, fit the spoiler to the trunk panel, and use masking tape to secure the templates to the trunk panel.

Once the templates are secured to the trunk panel, remove the spoiler and drill the holes using a 15/64" drill bit.

STEP 14

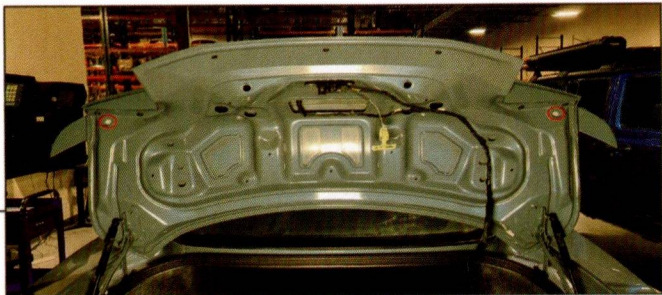


Loosely secure the LH and RH side end supports to the trunk panel using (1) M6 flange bolt, (1) M6 lock washer, and (1) M6 flat washer per side. Align the spoiler on each side to center the bolt hole within the trunk panel pre-cut hole. Using masking tape, secure the included (2) 4.5mm spacers into the trunk panel pre-cut hole.

Once the spoiler is aligned, tighten all hardware evenly until fully secure. Do not over-tighten the hardware.

SPEEDFORM

STEP 3



Remove (2) rubber grommets from each end of the trunk lid. Remove (2) 10mm bolts from the under-side of the vehicle spoiler.

STEP 4



Using a plastic pry tool and a heat gun, heat the spoiler edges to loosen the adhesive and gently pry upwards to disengage the spoiler tape adhesive from the trunk lid.

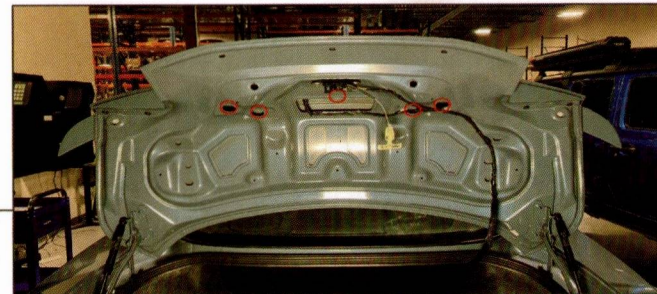
SPEEDFORM

STEP 5



Clean the vehicle trunk lid using exterior detailer and a microfiber cloth.

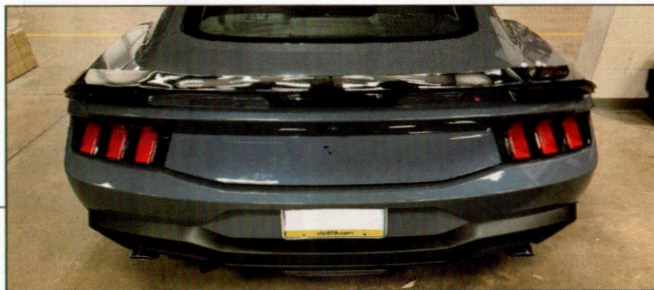
STEP 6



Open the vehicle trunk, and remove (5) 10mm nuts from the bottom of the trunk panel.

SPEEDFORM

STEP 15



Re-install the vehicle backup camera, and the trunk panel inner core. Secure the inner core to the trunk panel using the original (6) T-15 Torx bolts. Plug in the backup sensor and secure the wiring harness in the original locations.

Fit the trunk panel/spoiler assembly to the vehicle trunk. Secure the trunk panel to the trunk reusing the original hardware following steps 6-7 in reverse order.

STEP 16



Secure each end support to the vehicle trunk using the (2) M6 flange bolts, (2) M6 lock washers, and (2) M6 flat washers. Then, re-install the original bolt hole grommets into the trunk.

Note: If vehicle was equipped without the OEM spoiler, drilling these holes will be required.

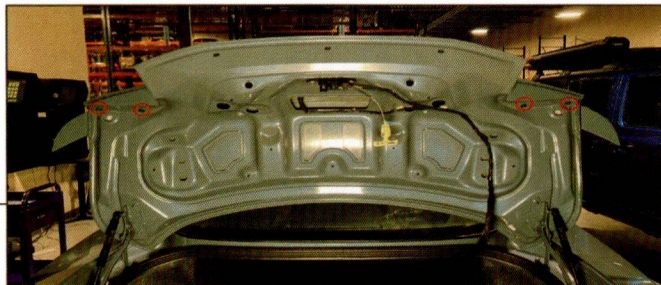
SPEEDFORM

STEP 17



Re-install the trunk insulation using the original plastic push clips.

Installation is now complete.

STEP 7

Remove (4) 7mm screws from the bottom of the trunk panel.

STEP 8

Using a plastic pry tool, work around the top edge of the trunk panel to relieve the double sided tape adhering the panel into place. Work the panel away from the vehicle. Unplug the backup camera harness connector and the (2) harness retainers. Set the trunk panel aside for disassembly.

Clean the vehicle trunk using exterior detailer.

STEP 9

Remove (6) T-15 Torx bolts from the trunk panel inner core. With the bolts removed, use a plastic pry tool to dislodge the friction fit retainers around the trunk panel, and remove the panel inner core.

STEP 10

Lift and remove the backup camera from the trunk panel, and set aside on a soft surface.