



CHIN SPOILER

(2024+ MUSTANG - EXCLUDING DARK HORSE)

INSTALLATION INSTRUCTIONS

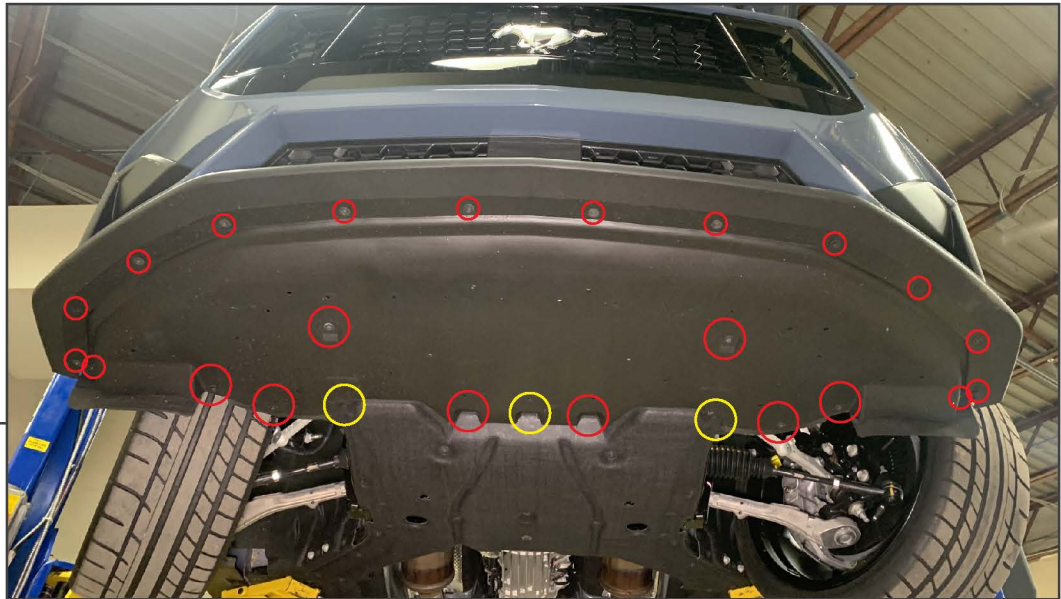
CONTENTS

- (1) LH Chin Spoiler Panel
- (1) Center Chin Spoiler Panel
- (1) RH Chin Spoiler Panel
- (12) M6x1.00 x 16mm Bolts
- (6) M6 Flange Nuts
- (6) M6 Clip Nuts

TOOLS REQUIRED

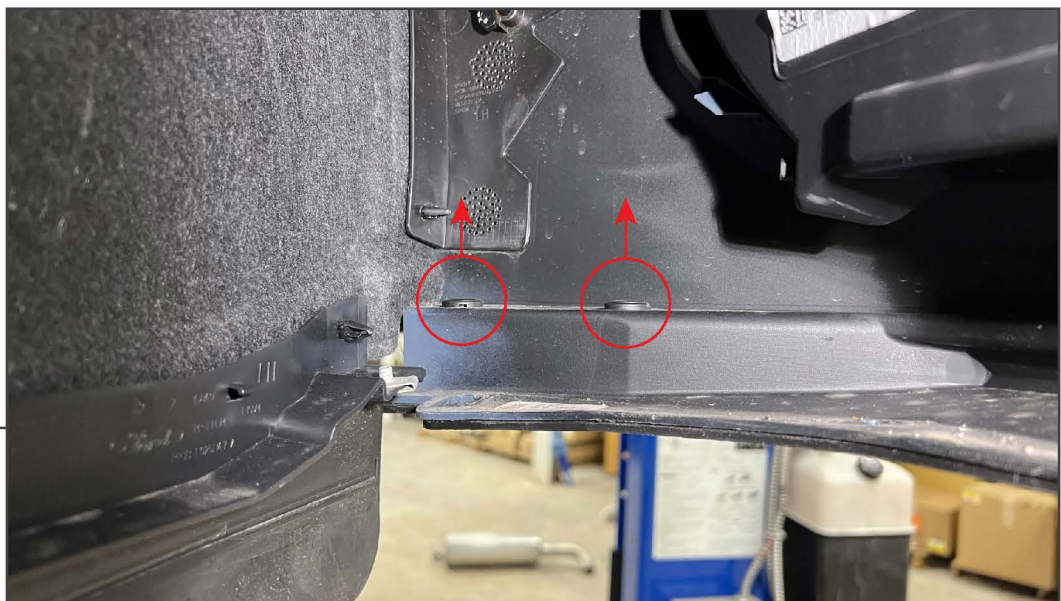
- Phillips Screwdriver
- Metal Pry Tool

SKU # 441441

STEP 1

Lift and support the front of the vehicle using a floor jack and jack stands.

From under the vehicle, remove (22) 7mm screws and (3) plastic push clips from the lower shield, then remove the shield from the vehicle.

STEP 2

Remove the (2) plastic push clips from the outer edge of the chin spoiler.

STEP 3

Remove (6) 7mm screws connecting the chin spoiler to the bumper.

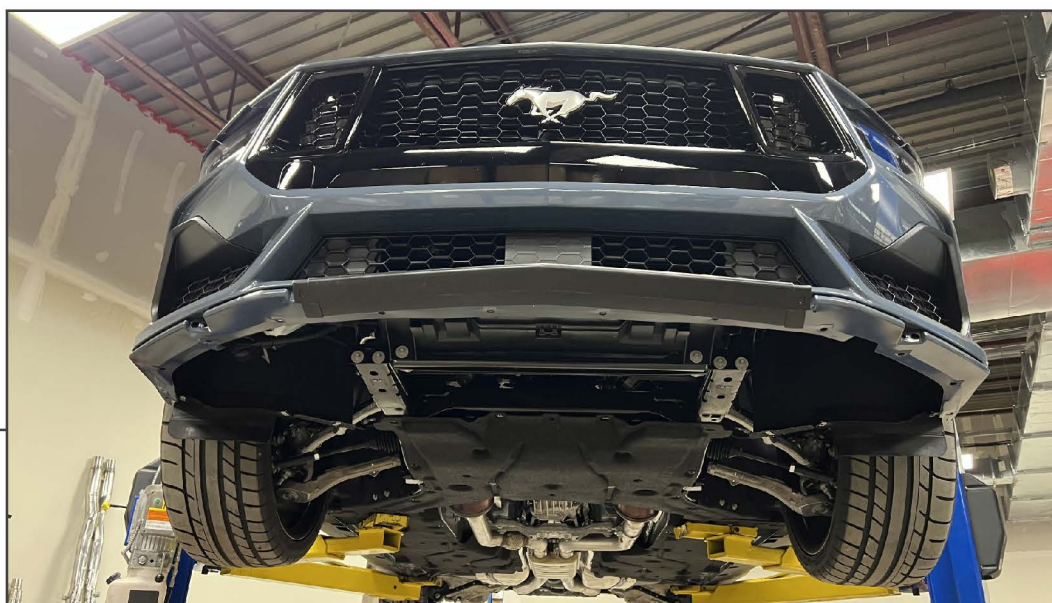
STEP 4

Begin removing the chin spoiler from the bumper by working from the outside of the vehicle towards the middle. Using a metal pry tool, press down on the chin spoiler retaining tabs while gently pulling the chin spoiler away from the bumper.

Remove the chin spoiler and place on a soft surface.

STEP 5

Fit (6) clip nuts into the designated slots in the chin spoiler.

STEP 6

Fit the center chin spoiler panel into the vehicle bumper. Press firmly to engage the plastic retaining tabs into the vehicle bumper.

STEP 7

Fit the LH side and RH side chin spoiler panels into the vehicle bumper. Press firmly to engage the plastic retaining tabs into the vehicle bumper.

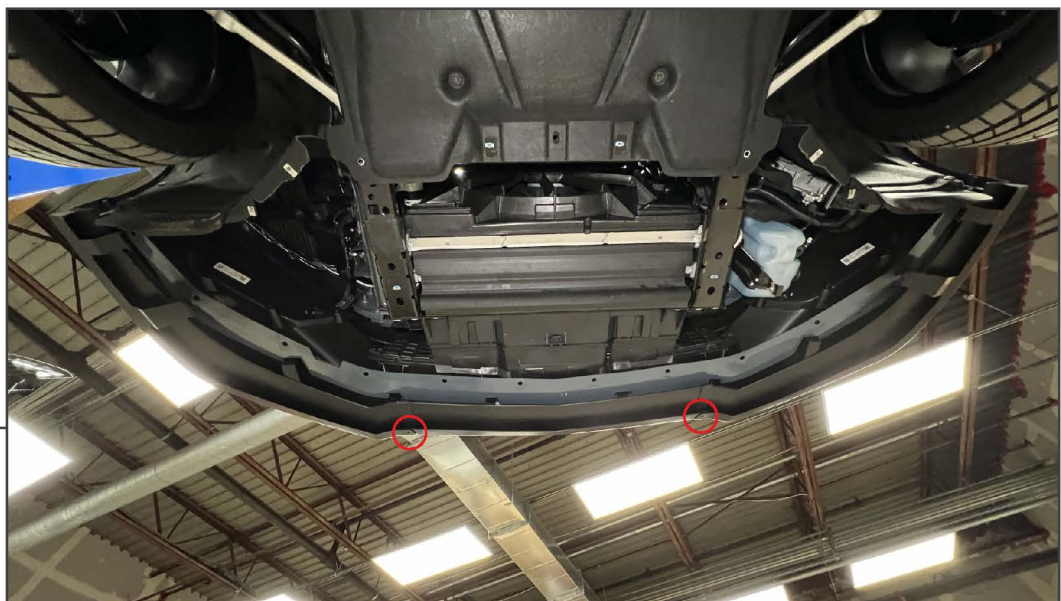
Ensure the LH and RH panels fit over the center panel.

STEP 8

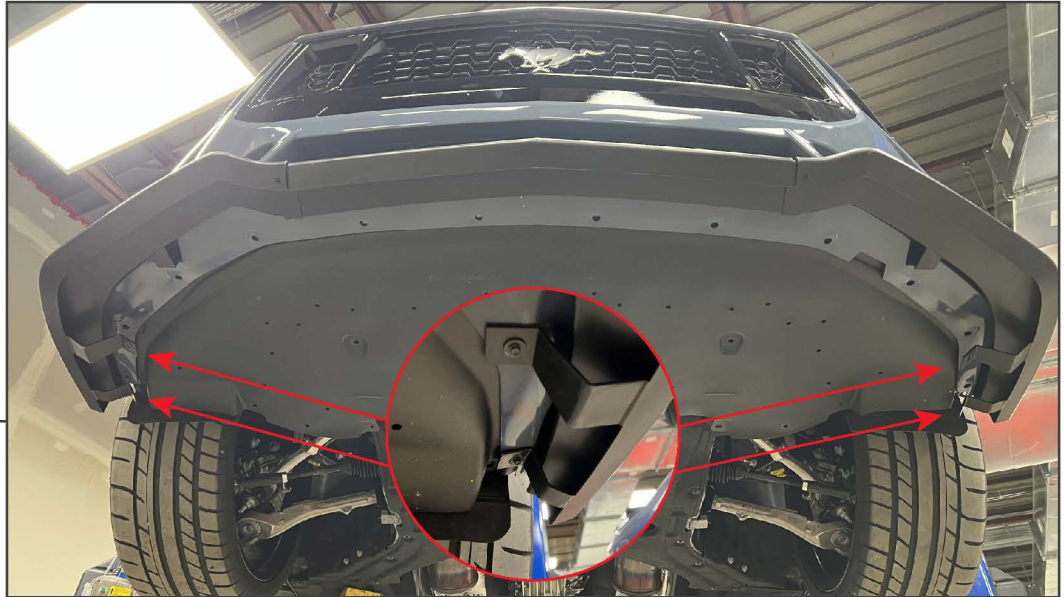
Secure the chin spoiler panels to the front of the vehicle bumper using (6) Phillips bolts into the previously placed clip nuts.

**STEP 9**

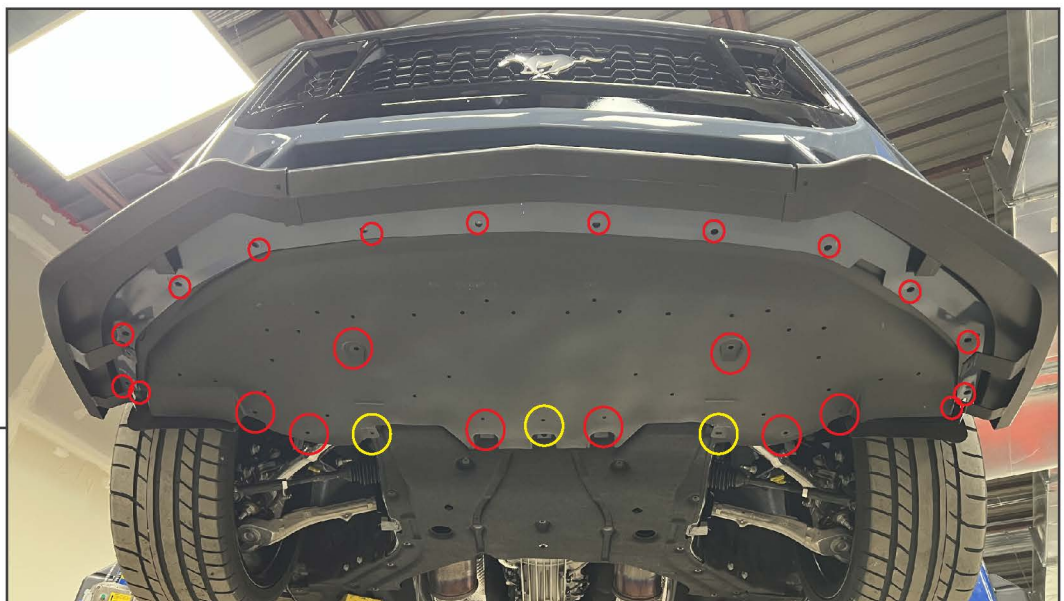
Secure the outer edge of the LH and RH chin spoiler panels to the bumper edge using (2) Phillips bolts and (2) M6 nuts per side.

**STEP 10**

Secure the outer panels to the center chin spoiler panel using (2) Phillips bolts and (2) M6 nuts.

STEP 11

Fit the lower shield to the vehicle. Fold the chin spoiler arms up to meet the vehicle bumper. Then, secure the chin spoiler to the bumper & lower shield using the original hardware.

STEP 12

Secure the lower shield reusing all OEM hardware.



STEP 13

Installation is now complete.