



SIDE SCOOPS

(2024+ MUSTANG)

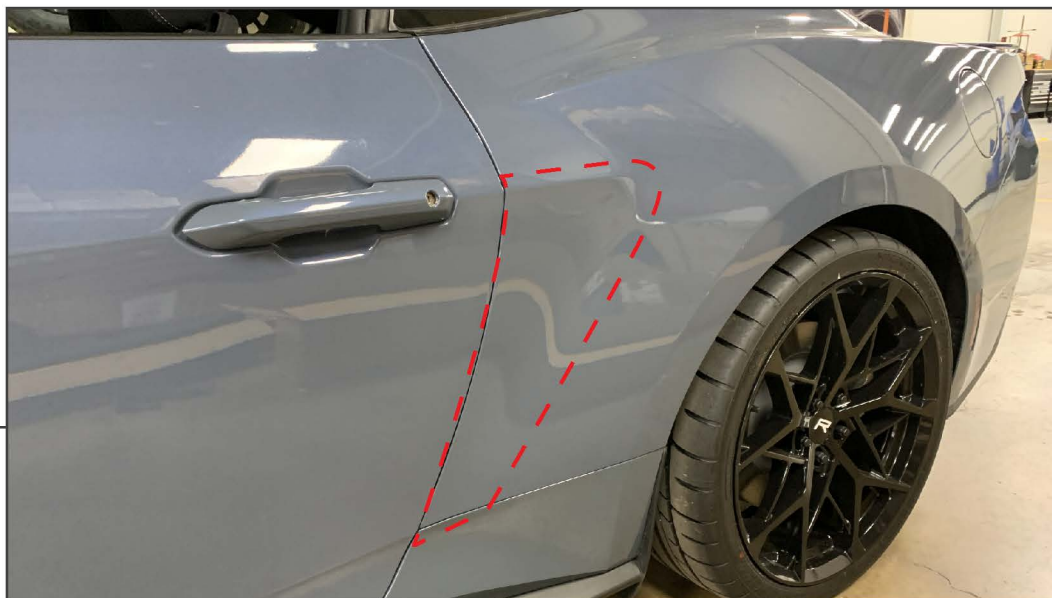
INSTALLATION INSTRUCTIONS

CONTENTS

- (1) LH Scoop
- (1) RH Scoop
- (1) LH Scoop Insert
- (1) RH Scoop Insert
- (1) Roll of Double Sided Tape
- (4) Alcohol Prep Pads
- (4) Adhesion Promoter Pads

TOOLS REQUIRED

- Exterior Detailer
- Microfiber Cloth
- Razor Knife



STEP 1

Using exterior detailer and a microfiber cloth, clean the vehicle quarter panel of any dirt/debris on the vehicle paint. Allow to fully dry.



STEP 2

Place the scoop on a soft workable surface. Test fit the included side scoop insert into the side scoop to familiarize fitment. Once familiar, clean the side scoop and the insert using (1) alcohol prep pad. Allow the alcohol to fully dry.



STEP 3

Place one strip of tape inside of the side scoop and firmly press the tape into place to ensure proper adhesion.



STEP 4

Peel the red tape backing, and firmly press the appropriate scoop insert into the scoop.



STEP 5

Clean the side scoop using (1) adhesion promoter prep pad, and allow to full dry. Apply the double sided tape to the (3) sides of the side scoop. Press firmly to ensure proper adhesion.



STEP 6

Test fit the side scoop to the vehicle to familiarize fitment before removing the tape backing.

Clean the vehicle using (1) adhesion promoter prep pad, and allow to fully dry. Then, peel the tape backing and adhere the side scoop to the vehicle. Press firmly to ensure proper adhesion.

Repeat steps 1-6 for the remaining side scoop. Installation is now complete.