



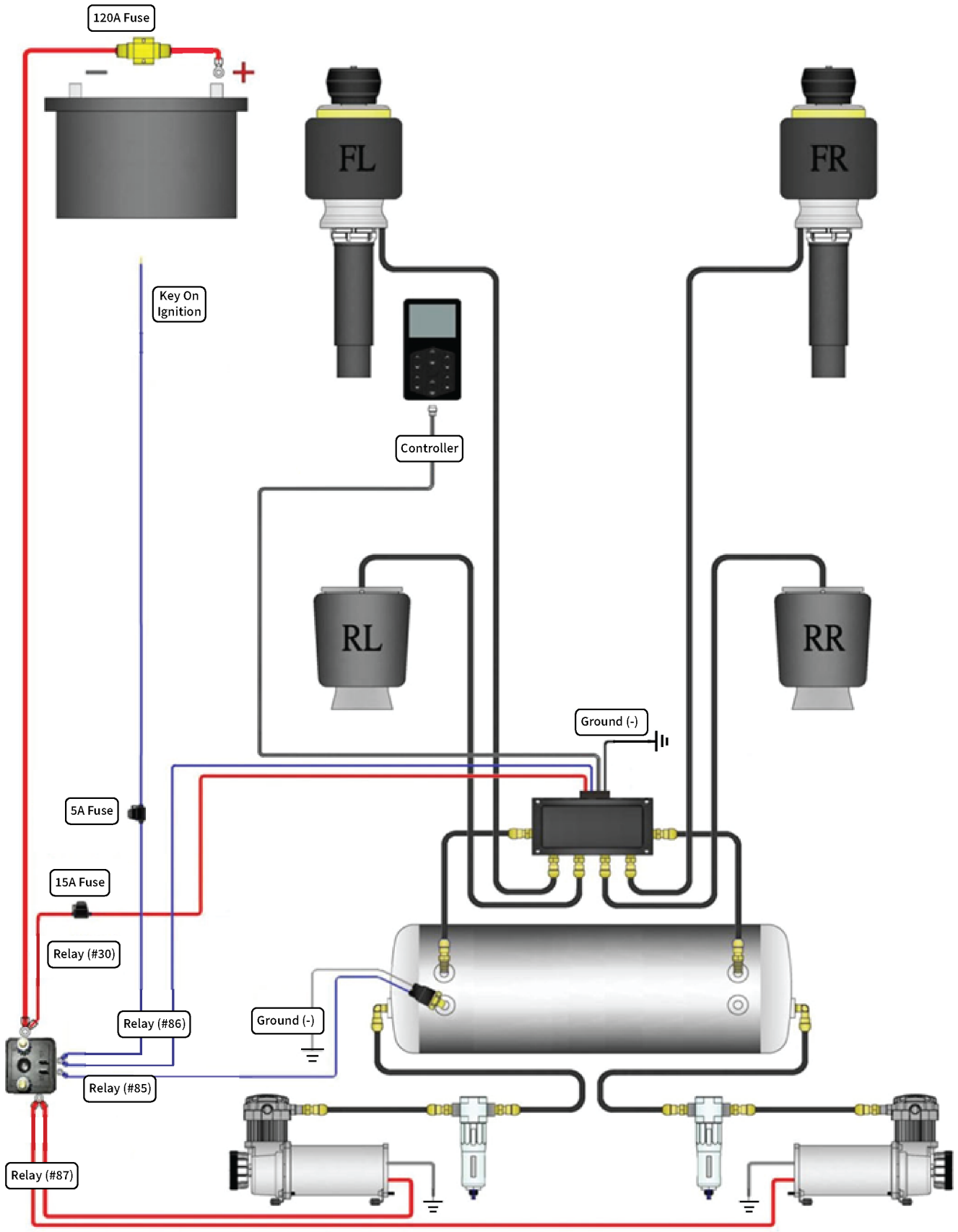
Air Ride Suspension Kit for 2015-2023 Mustang

Installation Instructions

SKU # 428239

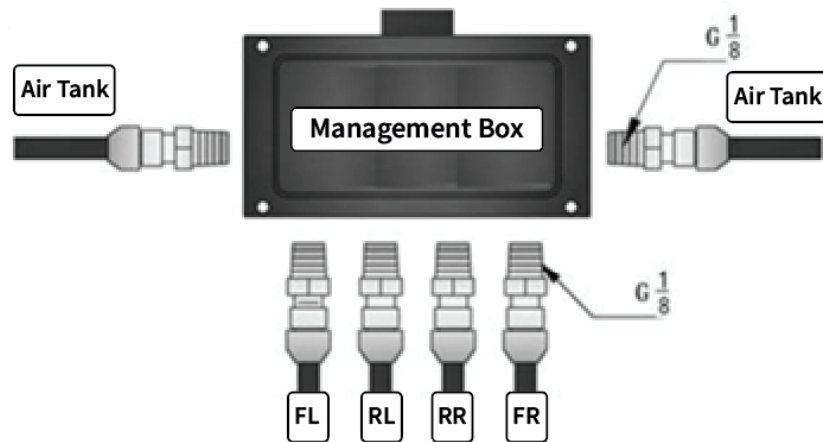
▪ System Composition Layout Diagram	-----	1
▪ Air Lines	-----	2
▪ System Test	-----	3
▪ Remote Control Functionality	-----	4-7

Air Suspension Components Diagram



Air Lines

1. Connecting Solenoid Valve (Management Box)



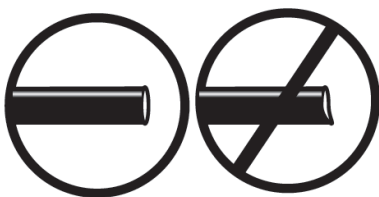
2. Connecting Air Spring / Air Compressor / Air Tank

The electric air springs (bags), the air storage tank, and the solenoid valve group (management box) are connected using the included air line.

It is recommended to install an air compressor filter. In cold climate, the air compressor filter must be installed to ensure stable operation of the pneumatic system.

Air Line Cutting/Routing:

1. Use standard pipe cutters or sharp blades to ensure that the air line ends are as round and flat as possible.
2. Route the air lines away from any sharp edges and heat sources. If necessary, use insulated casing for additional protection.



Joint assembly guide:

1. Check the interface screw holes and joint studs to ensure that there is no contamination and excessive adhesions and cracks.
2. Apply sealant on the joint thread. Do not apply the sealant to the initial two threads.
3. Screw the connector thread into the interface screw hole and tighten until secure.

Note: Do not loosen the tightened threads for air line routing. Unscrewing will damage the seal and cause air leaks.

System Test

When most of the components of the system are installed and connected, the system can be tested.

Note: The test procedure is done with the vehicle in the air.

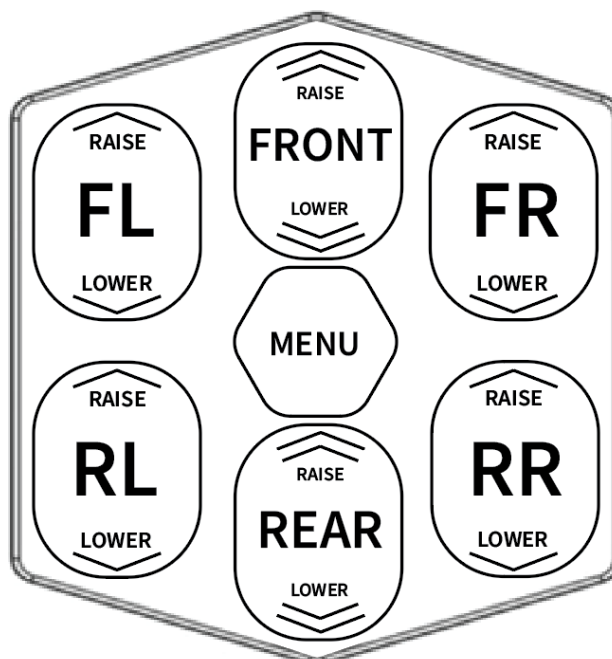
System Test:

1. Start the car, the air compressors will begin to inflate the air tank. When the air compressors reach the maximum set pressure, the air compressors will automatically turn off. When the tank volume is 5gal (20L), the dual compressors will fill the tank within 2-3 minutes.
2. As shown on the left, adjust each corner of the vehicle using the button groups to see if the corresponding wheel position will rise and fall. When the body is raised, air will be consumed, and the electric air pump will start automatically when necessary.
3. With the vehicle lifted from the ground, thoroughly inspect the mechanical system to ensure proper installation. Check the clearance between the entire range of the air spring and the surrounding components.
4. Check all threaded fittings for leaks with soapy water.

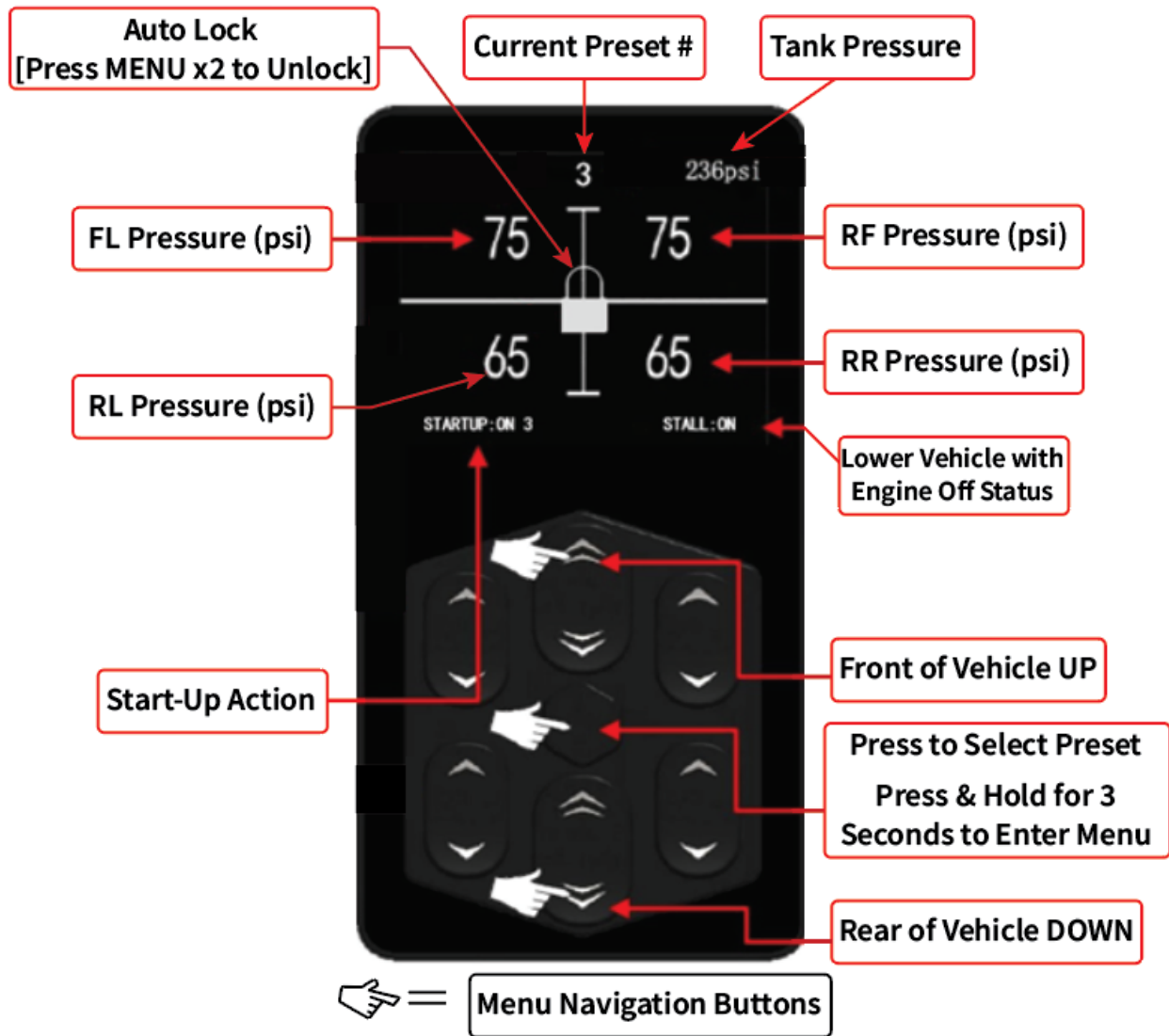
When repairing the leak, first release all air bag pressure, then turn off the ignition and release the tank air pressure.



The button description of the button area is as follows:



Remote Control Functionality



Use of Remote Control Menu

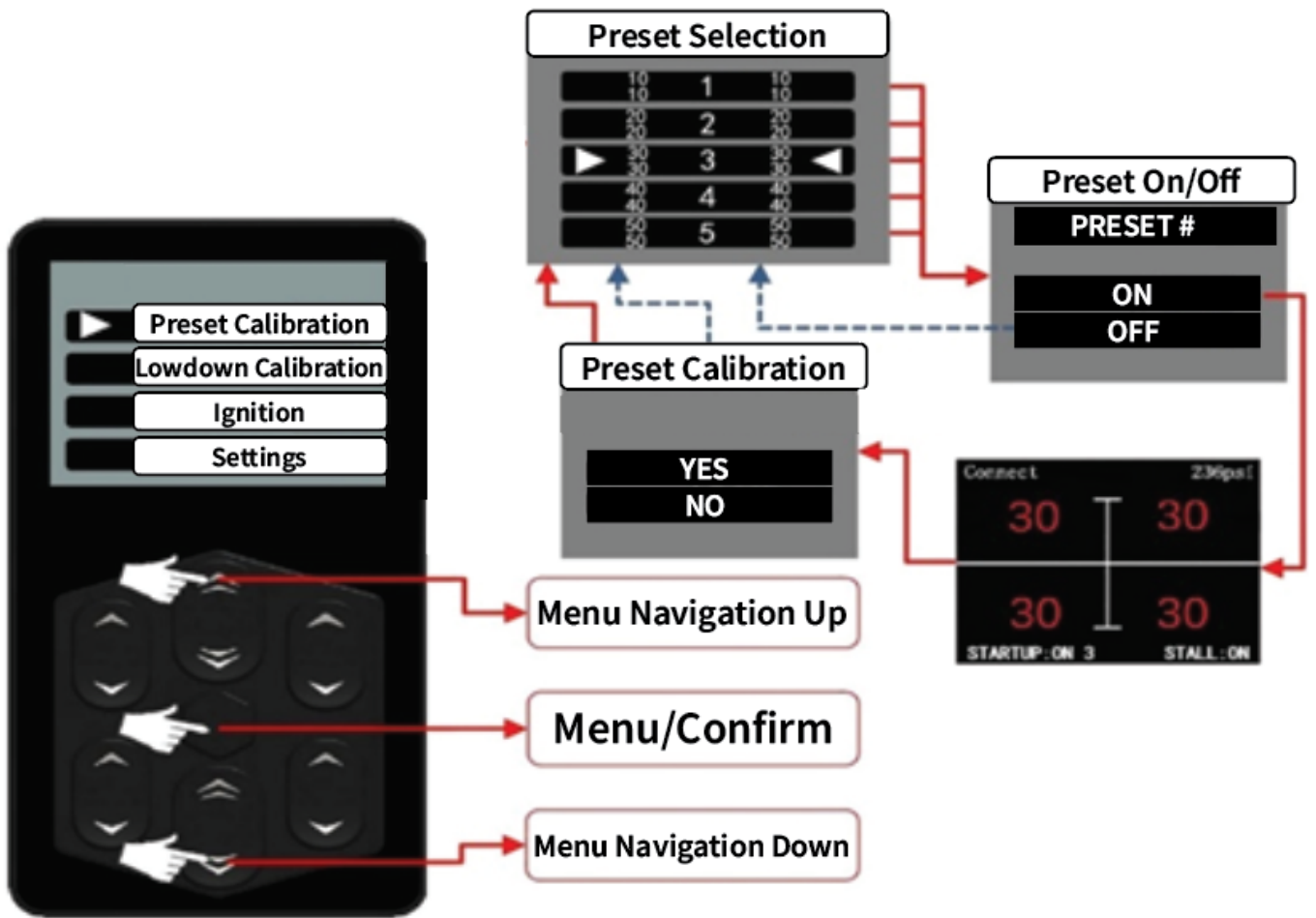
1. Preset calibration

A. Place the vehicle on the ground, and set the desired ride height by changing the pressure values at each corner.

B. The controller retains (5) ride height presets. Each of the (5) positions can be turned on / off independently. The presets will be distinguished by color on / off, "Gray" is off.

C. It is recommended to set all (5) presets to appropriate values for the vehicle' s use.

Note: Do not operate the controller while driving the vehicle.



2、 Auto Air-Out settings

Enter Air-Out: Select "Enter Lowdown" to enter the air-out interface. In the process of performing an air-out, as long as the key is operated, the default is to interrupt the lowdown in time. The total air-out time is 10 seconds.

Engine off air-out: Select the "Flameout lowdown" and confirm "Flameout lowdown" on / off. This will air the vehicle out when the engine is powered off.

3. Ignition settings

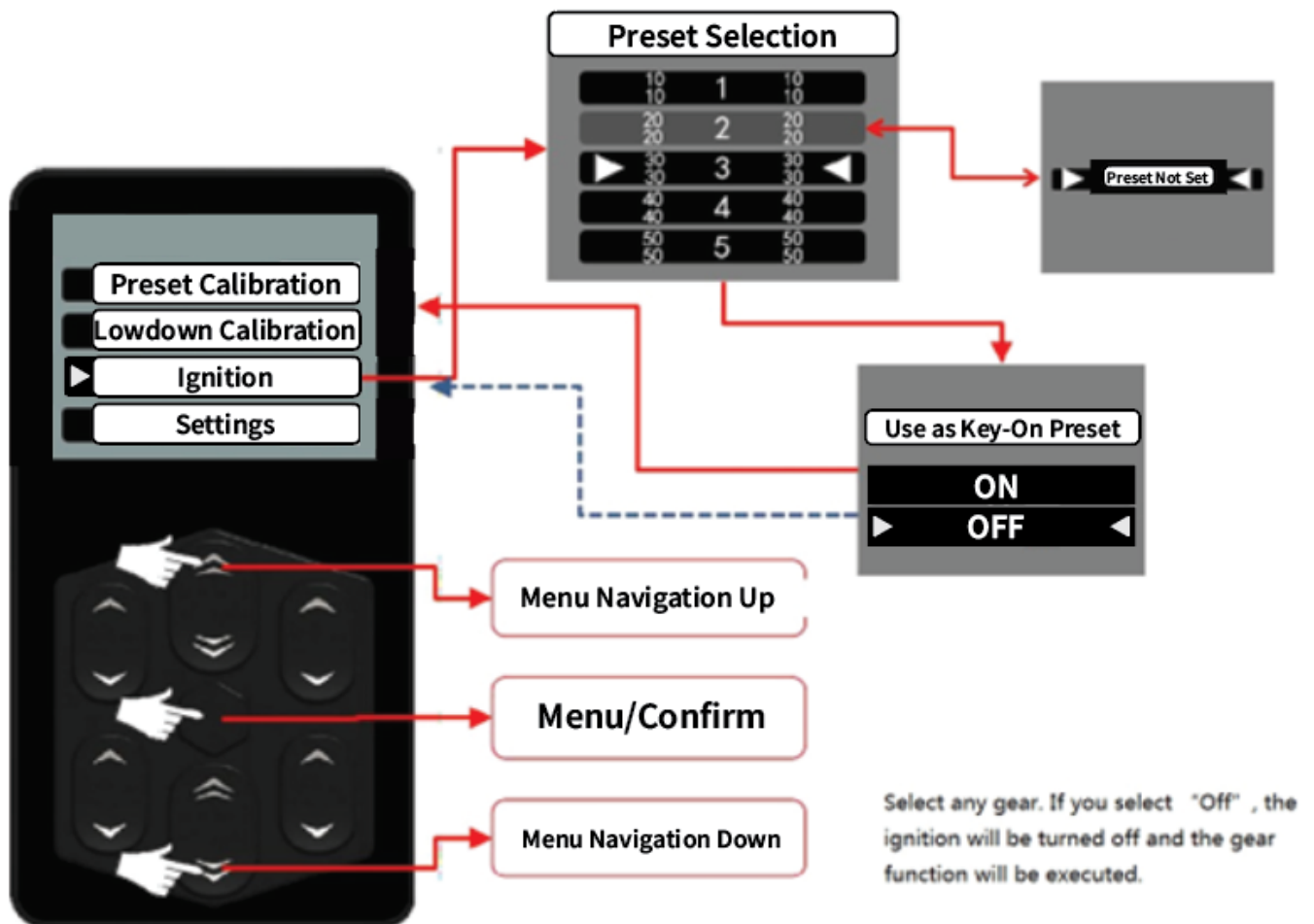
A、 After entering the ignition setting, you can select any one of the (5) presets as the "ignition entry gear". The closed state of the gear cannot be used, and a "no gear" interface will appear.

B "Ignition into gear" can be "on / off", just click "confirmation key" in the currently set preset, and the interface of "ignition into (some) gear on / off" will pop up.

Tips:

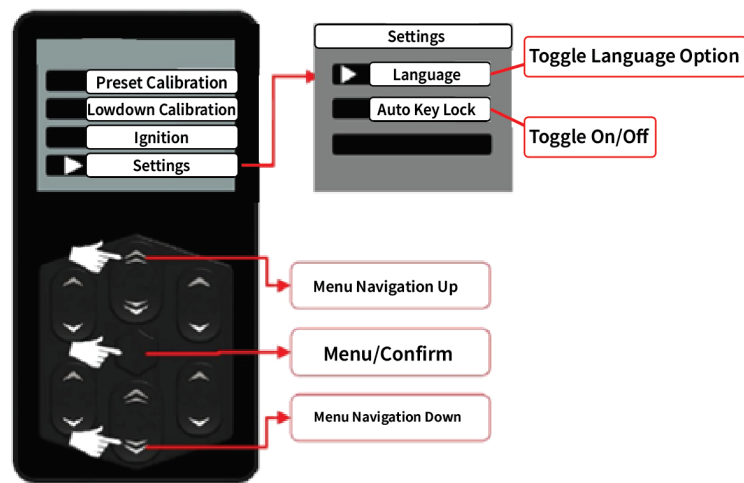
a、When “Ignition into gear on” is selected, starting the engine to execute the preset for 10 seconds is not interruptible. In addition, from the start of the engine calculation, within 50 seconds, turn off the engine and pull out the ignition key, the flameout is on, and the vehicle will not air-out.

b、After the engine is off, the vehicle will ignite again within 15 seconds. When the preset is in the “open” mode, the vehicle will not enter the preset at this time.



4、 Other settings:

Automatic key lock function: When the remote control is not operated, the keyboard is automatically locked after 10 seconds. Double-click the "Menu / Confirm" key to unlock; this function can be turned on and off according to preference.



5、Preset shortcuts to enter:

A、When displayed on the homepage, click "OK" to enter the gear shortcut selection interface.

B、After entering the preset shortcut interface, click "Front Axle Up" to 1st preset, "Front Axle Down" to 2nd preset, "Menu / Confirm Key" to 3rd preset, "Rear Axle Up" to 4th preset, and "Rear Axle Down" to 5th preset. Other keys return by default.

C、The preset position is displayed in gray, which indicates that the preset position is closed. After selecting, the "No preset" interface will pop up.

