



SIDE SCOOPS

(2005-2009 MUSTANG ALL)

INSTALLATION INSTRUCTIONS

CONTENTS

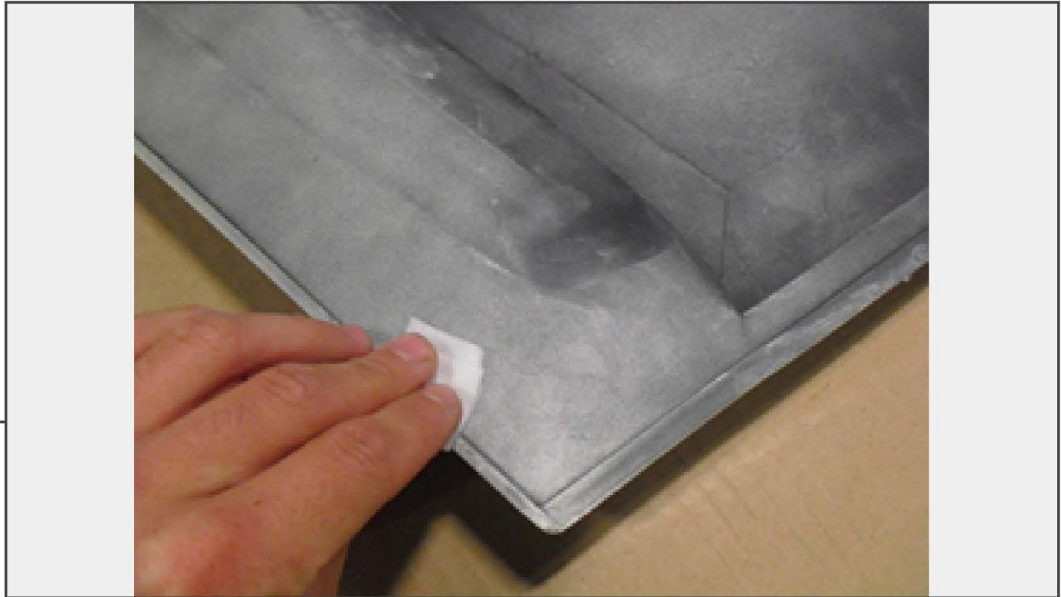
- (1) LH Side Scoop
- (1) RH Side Scoop
- (1) LH Insert
- (1) RH Insert
- (1) Tape Kit
- (2) Alcohol Pads
- (1) Adhesion Promoter

TOOLS REQUIRED

- Automotive Soap/Detailer
- Microfiber Towel
- Utility Knife

SKU # 415412

STEP 1



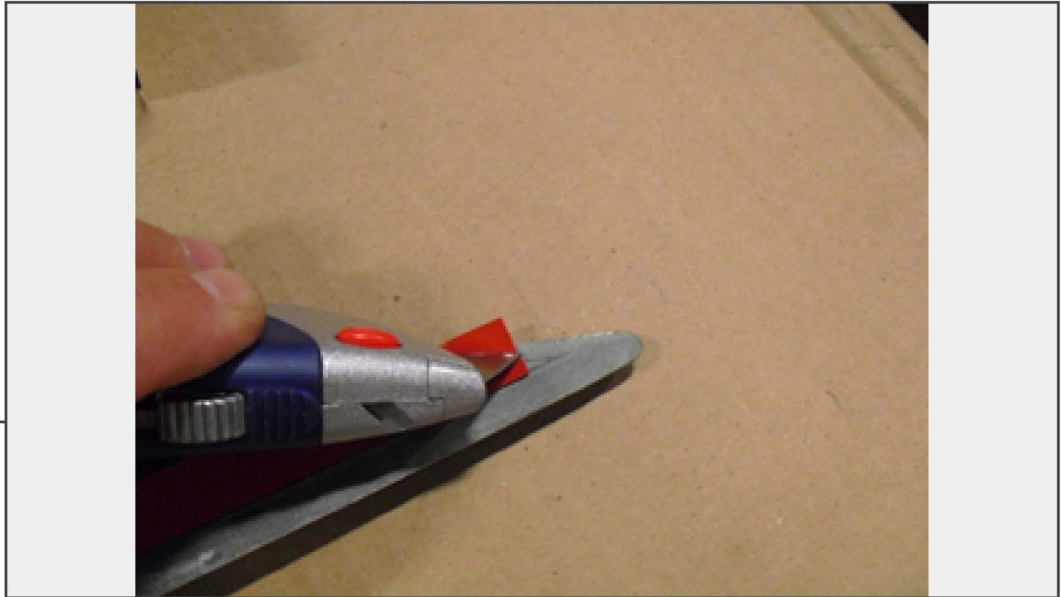
Using the supplied 3M Automotive Adhesion Promoter, thoroughly clean the surface of the side scoop where the adhesive tape will be applied.

STEP 1B



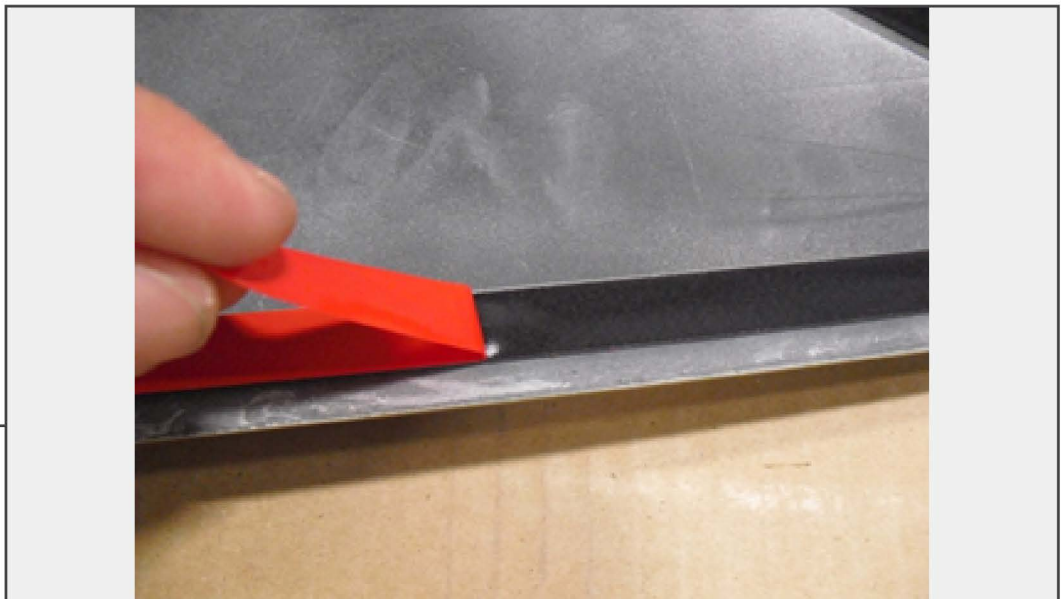
Using the supplied Alcohol Prep Pads, thoroughly clean the surface of the vehicle where the scoop will be applied. Once dry, treat the same area with the supplied adhesion promoter.

STEP 2



Apply the supplied adhesive tape to the outside edges of the side scoop, making sure that it is not extending past the edges. Tip: Make sure to use adhesive on outer edges of corners, this will ensure a proper fit once scoop is applied to vehicle. Use a utility knife to cut remove excess adhesive tape.

STEP 3



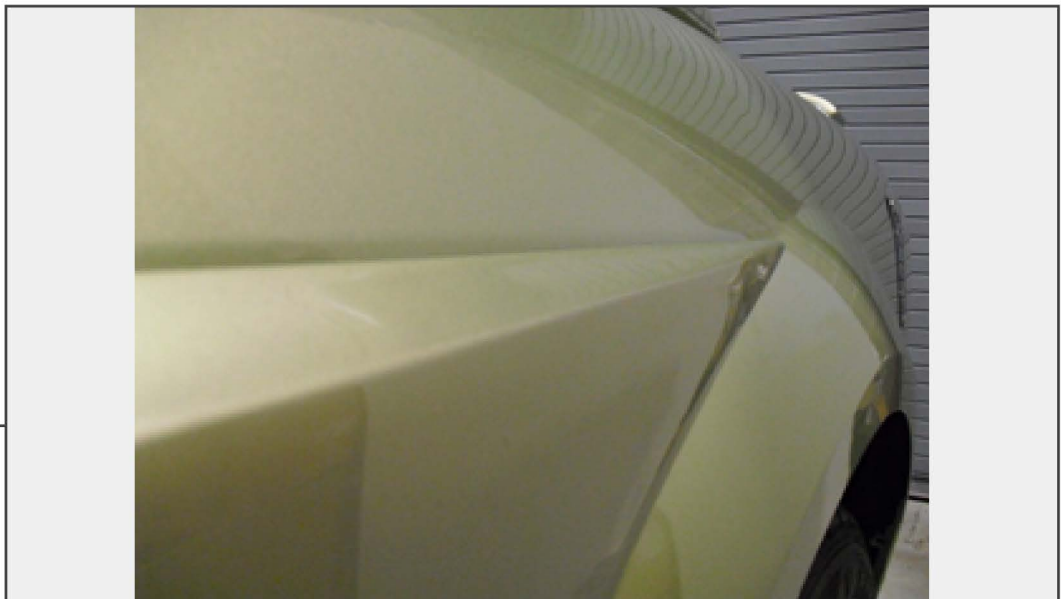
Peel backing from adhesive tape on the side scoop.

STEP 4A

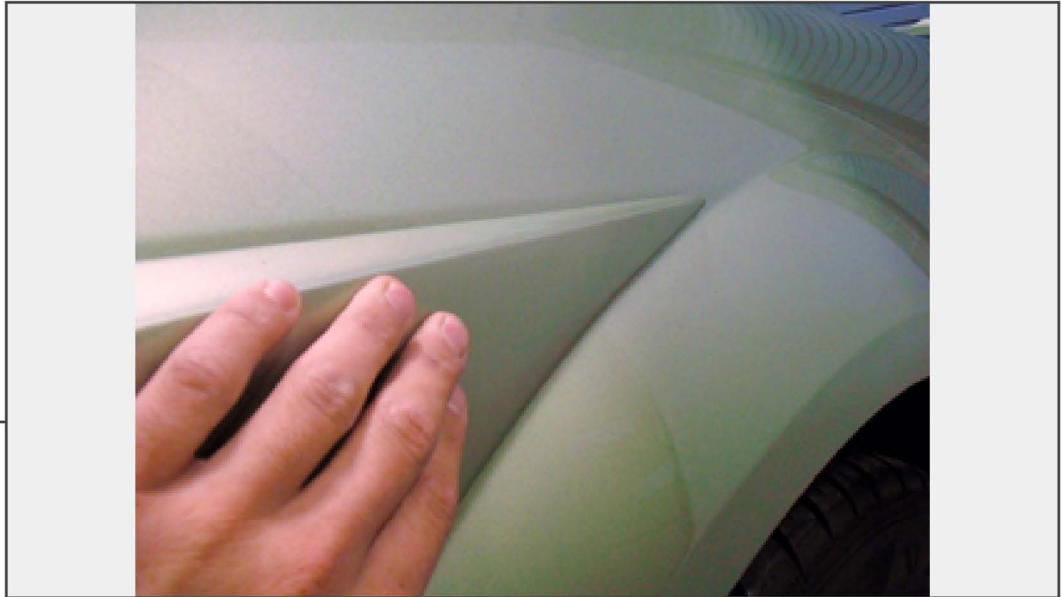


Lightly place side scoop on vehicle, taking care to align upper corner with body line and door opening as shown below.

STEP 4B



STEP 5A



When certain that scoop is properly aligned, press down firmly where adhesive tape was applied to ensure a proper fit.

STEP 5B



Repeat these steps for the opposite side.