



SIDE SCOOP & INSERT

(2015-2020 MUSTANG ALL)

INSTALLATION INSTRUCTIONS

CONTENTS

- (1) LH Side Scoop
- (1) RH Side Scoop
- (1) LH Insert
- (1) RH Insert
- (1) 72" Tape Roll
- (2) Alcohol Pads
- (2) Adhesion Promoter

TOOLS REQUIRED

- Detailer/Soap
- Microfiber Towel
- Thick Dental Floss/Fishing Line
- Adhesive Remover
- Heat Gun/Hair Dryer
- Scissors/Utility Knife

SKU # 415411

STEP 1



Thoroughly clean your vehicle using automotive soap and water. Using the supplied alcohol pads, clean the tape ledges. Once the alcohol is dry, wipe the tape ledges with the supplied adhesion promoter, allow to dry.

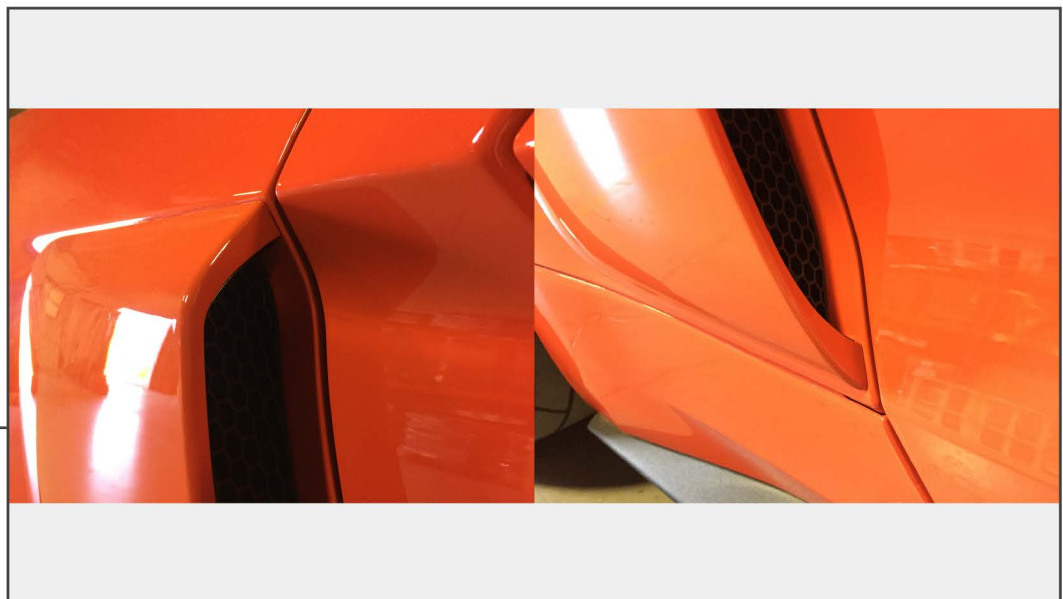
STEP 2



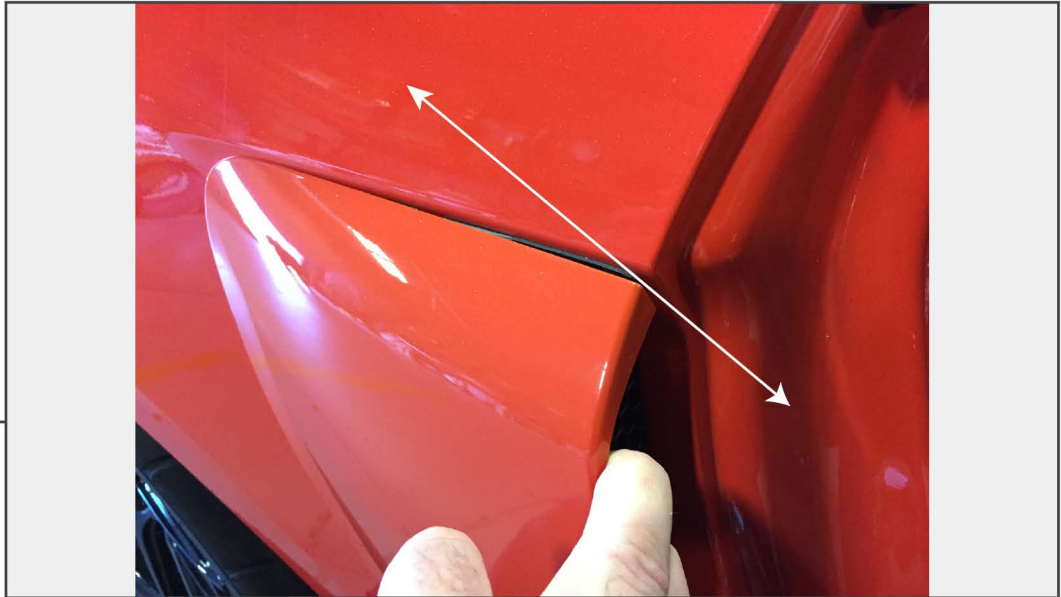
Trim and install the supplied tape to the treated tape ledge surfaces. Note: If you did not order the Side Scoop Inserts, skip to Step 4.

STEP 3

Next, install the supplied Side Scoop Insert. Begin by testing fitting the insert. The insert can only be installed by first inserting the bottom(1), then the top(2). The insert has to be flush with the edges to ensure the scoop will fit correctly on the car. If the insert sticks up past the tape, it will not sit flush on the vehicle. After you see how the insert fits, remove the tape backing and secure the insert to the side scoop.

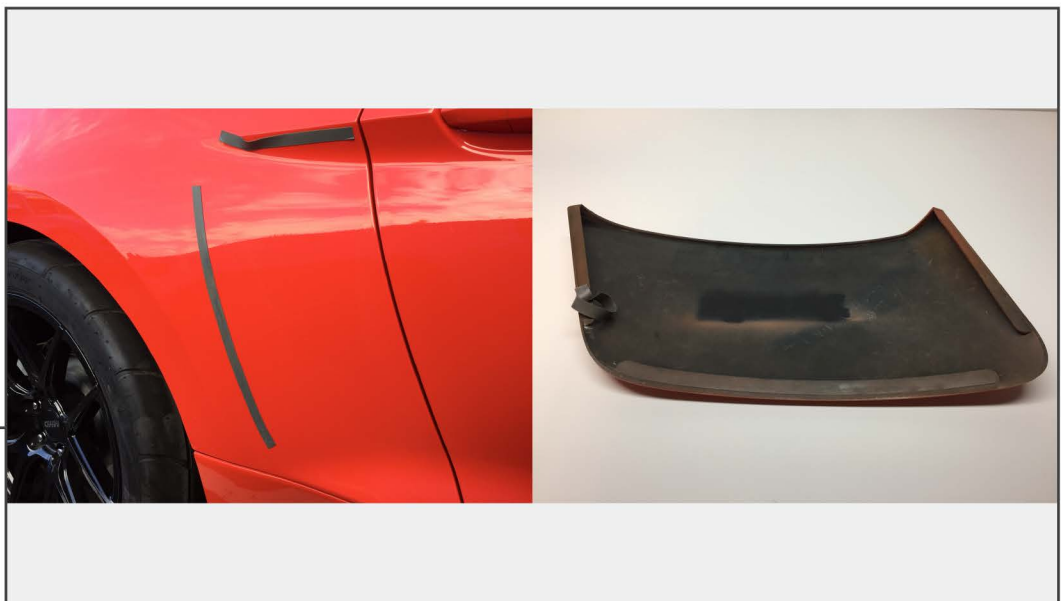
STEP 4

Test fit the part before removing the tape backing. The top edge of the scoop sits on the edge of the body line radius. The opening should sit about 1/16"-1/8" off the edge of the door opening. Remove the tape backing, align the scoop, and apply firm pressure to all the tape surfaces to fully seat the adhesive.



**STEP 1
(SCOOP
REMOVAL)**

SCOOP REMOVAL IF SIDE SCOOP INSERT WAS PURCHASED SEPARATELY: Begin by removing the side scoop from the vehicle. The side scoop can be difficult to remove. Use thick dental floss or fishing line, to "saw" the double sided tape. Pull the scoop off the car slightly to get the floss/fishing line between the scoop and the quarter panel. Pull the floss/fishing line side to side effectively cutting/sawing through the tape. ****Note:** Trying to pry/pull the scoop off can damage the part and/or your vehicle.



**STEP 2
(SCOOP
REMOVAL)**

SCOOP REMOVAL IF INSERT WAS PURCHASED SEPARATELY: Next, remove and leftover adhesive and tape backing from the vehicle and the back side of the scoop. A hair dryer can be helpful during this step, ensure you don't leave the heat focused on one spot for too long as the heat can damage the paint. Adhesive removers can be helpful but first, test them on a hidden portion of you paint to ensure the adhesive remover won't damage or discolor the paint. Once all adhesive is removed, follow steps 1-4 to reinstall the MMD Side Scoop.