



QUARTER WINDOW LOUVER

(2005-2014 MUSTANG COUPE)

INSTALLATION INSTRUCTIONS

CONTENTS

- (1) LH Quarter Window Louver
- (1) RH Quarter Window Louver
- (2) Alcohol Pads
- (2) Adhesion Promoter
- (1) Roll of Tape

TOOLS REQUIRED

- Detailer/Soap
- Microfiber Towel
- Utility Knife/Scissors

SKU # 415409



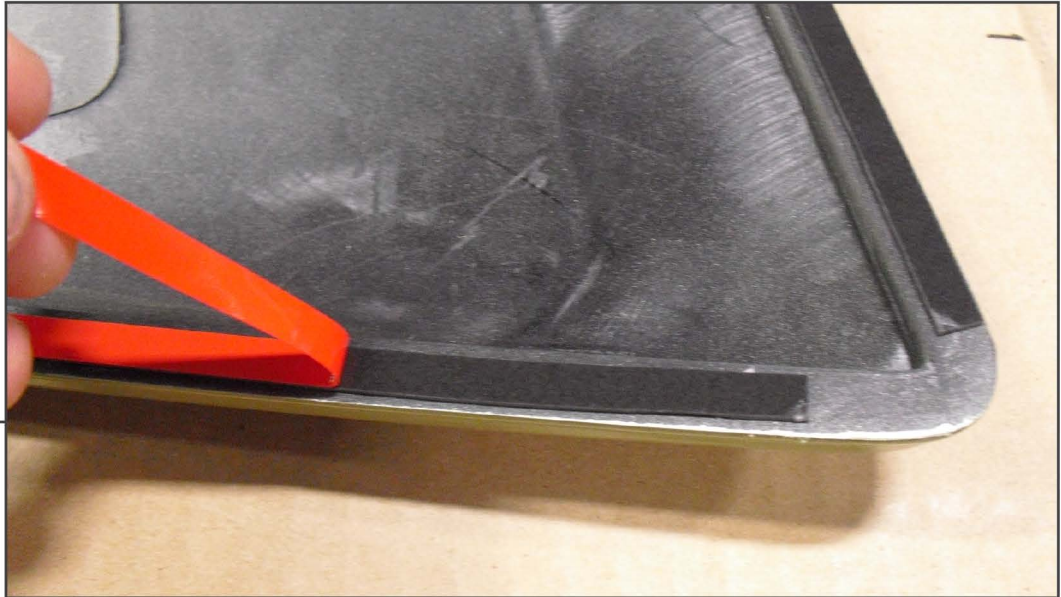
STEP 1

Using the supplied alcohol prep pads, thoroughly clean the outside edges of the quarter window where the louver will attach. Next, use the supplied adhesion promoter to clean the tape surfaces of the louver.



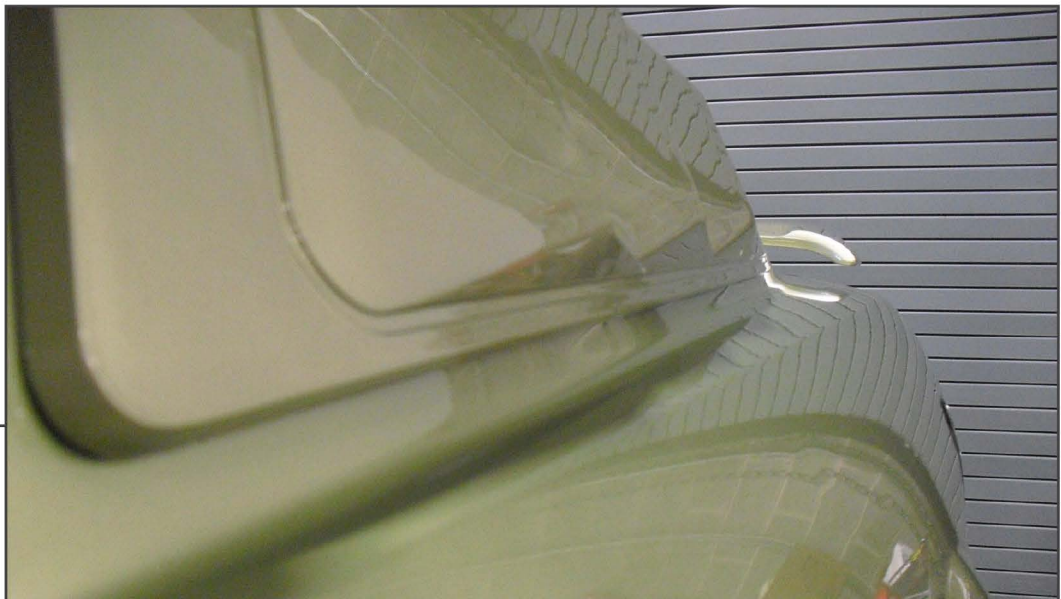
STEP 2

Apply the supplied adhesive tape to the outside edges of the louver, making sure that it is not extending past the edges.



STEP 3

Peel backing from adhesive tape on the louver.



STEP 4

Lightly place louver on vehicle in desired location, making sure the bottom edge is parallel to the body line as shown in picture.



STEP 5

Once louver is in desired location, firmly press down on all surfaces where adhesive was applied to ensure a proper fit. Repeat all steps for remaining louver to complete installation.