



MACH 1 STYLE FRONT BUMPER

(2018-2021 MUSTANG GT, ECOBOOST
EXC. GT350/GT500)

INSTALLATION INSTRUCTIONS

CONTENTS

- (1) Bumper Cover
- (1) Chin Spoiler
- (1) Chin Spoiler Winglets
- (1) Upper Grille
- (1) Lower Grille
- (2) Fog Light Covers
- (20) 17mm Self-Tapping Screws
- (28) 15mm Self-Tapping Screws
- (12) Bolts
- (40) Washers
- (12) Nuts

TOOLS REQUIRED

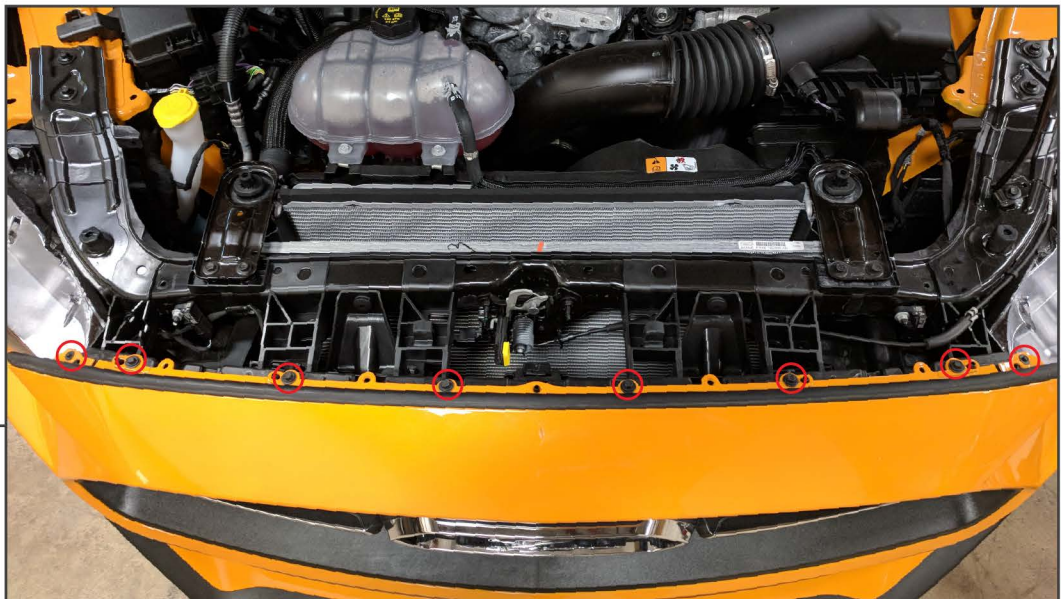
- Trim Panel Removal Tool
- Flat Screw Driver
- 5.5mm, 7mm, 8mm Sockets
- Ratchet

SKU# 414654



STEP 1

Raise and support the vehicle to gain access to the under side of the bumper and rocker panels. Using a soft pry tool, remove the (8) plastic push clips securing the radiator cover to the vehicle.



STEP 2

Using a 5.5mm and 8mm socket remove the (8) bolts securing the bumper to the radiator support.



STEP 3

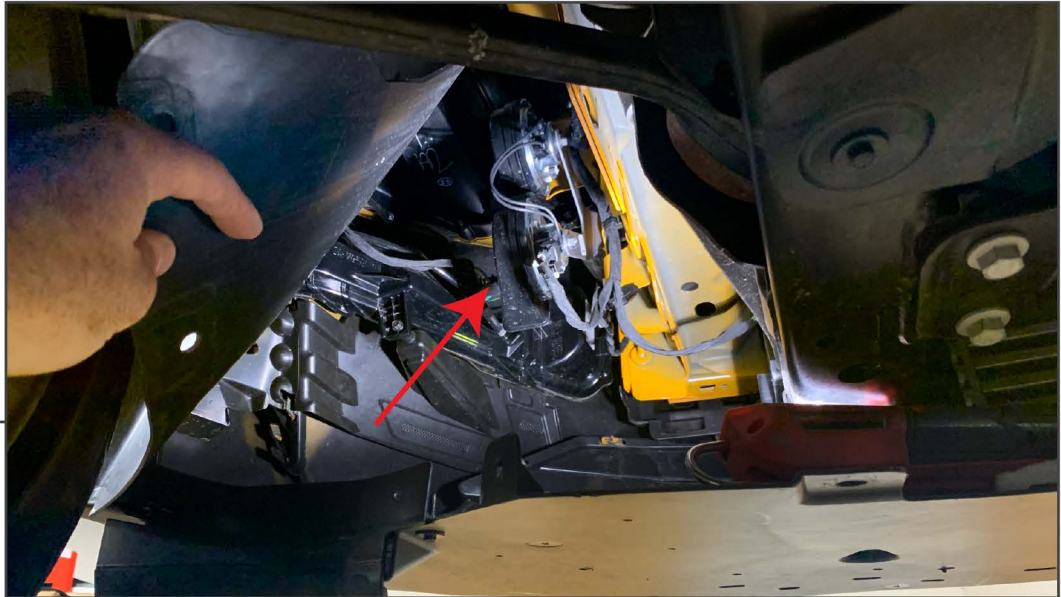
Remove the (3) push clips on the outer edge of the inner fender liner and the (2) at the bottom of the splash shield from each side of the bumper.



STEP 4

Remove the (4) push clips at the back of the splash shield and the (4) 7mm screws.

STEP 5



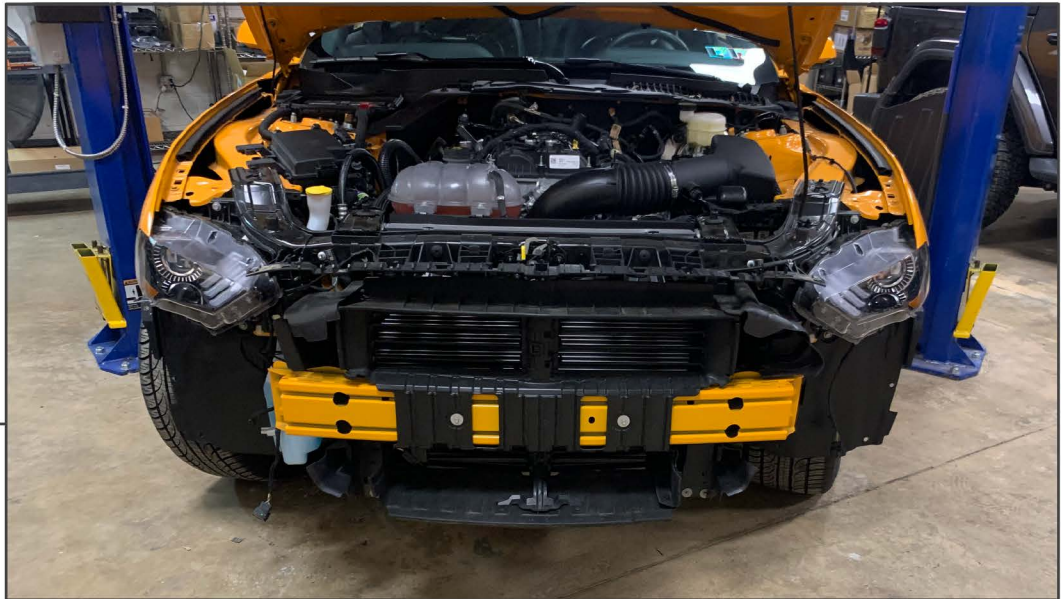
Fold back the fender liners to access the turn signal plugs (1) on each side. Depress the electrical connector's retaining clip and pull the plug away from the light.

STEP 6



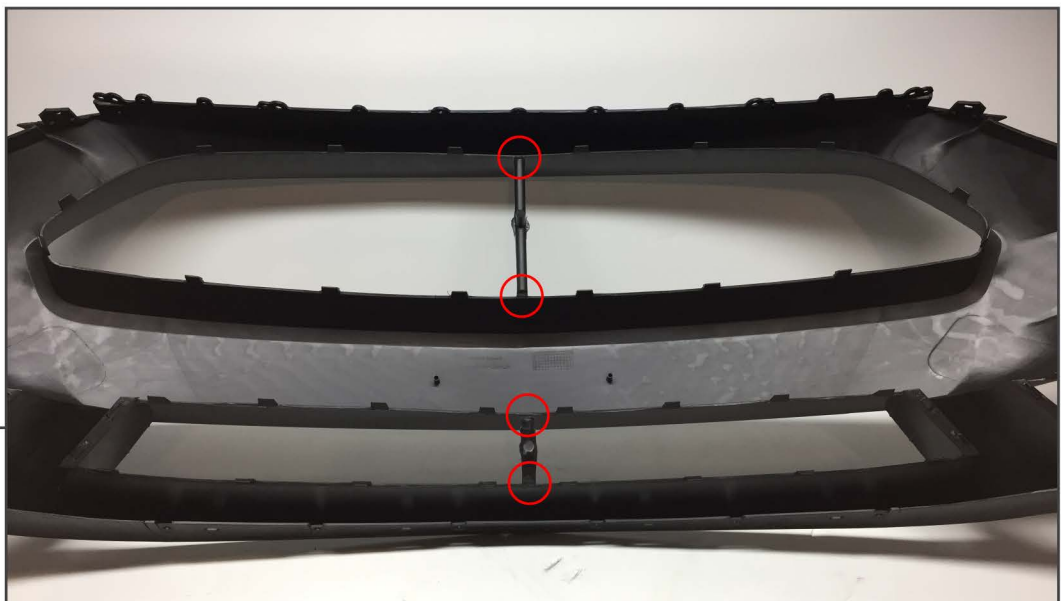
Using a 10mm socket, remove the (2) 10mm nuts securing each side of the bumper to the fenders.

STEP 7



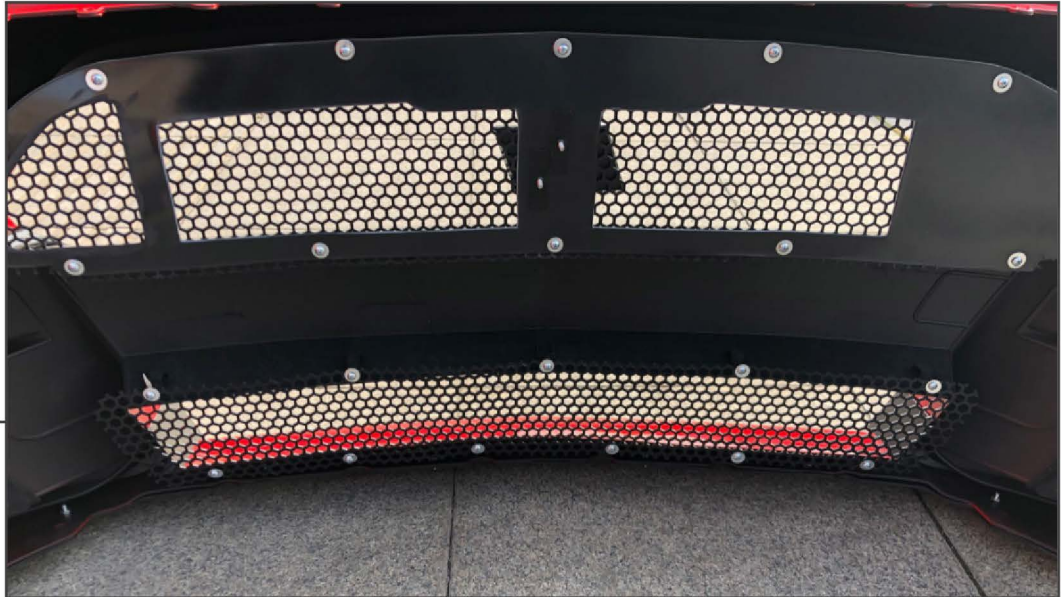
Remove the bumper and splash shield as an assembly from the vehicle and set it to the side.

STEP 8



Using wire cutters, remove the upper and lower grille braces. Carefully use a razor blade to clean up any extra material.

STEP 9



Install the upper and lower grilles using the (28) provided 15mm self-tapping screws and flat washers.

STEP 10



Install the supplied chin spoiler to the bumper using the (12) provided 23mm bolts, (12) washers, and (12) nuts. Install the chin spoiler winglets using the (20) provided 17mm self-tapping screws.

STEP 11



Remove the turn signal bracket from the bumper using a 7mm socket.

STEP 12



Bumper assembly with all grilles installed.

STEP 13



Transfer the factory turn signals from the original bumper onto the new bumper using the factory hardware.

STEP 14



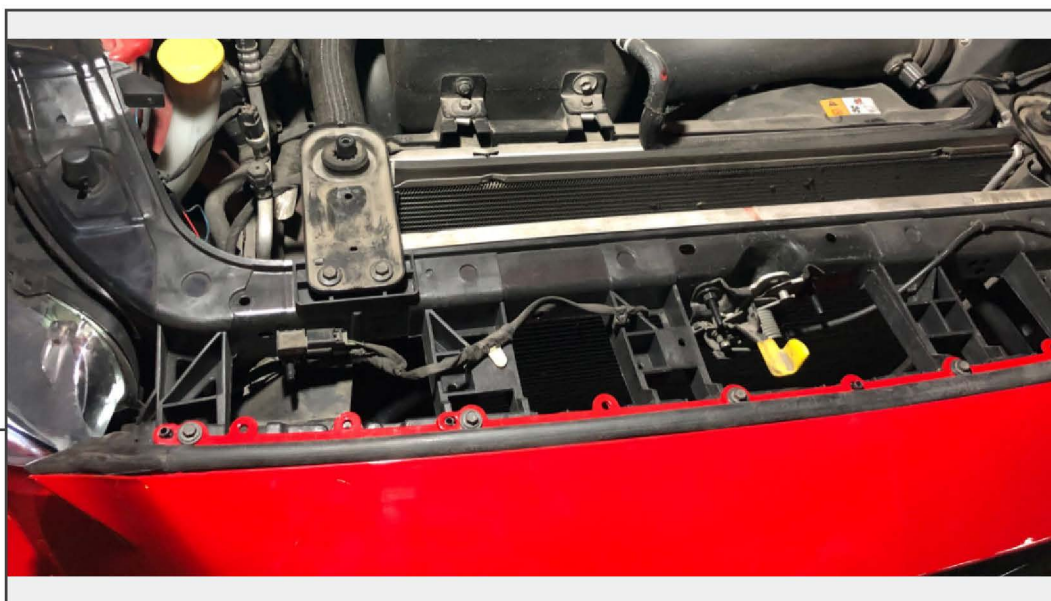
Transfer the splash shield screw clips from the original bumper to the new bumper.

STEP 15



Install the new bumper onto to vehicle following Steps 1-7 in reverse order.

STEP 16



Transfer the hood weather stripping from the factory bumper to the new bumper.



STEP 17

Installation is now complete.