



CONVERTIBLE STYLING BAR

(2015-2021 MUSTANG CONVERTIBLE)

INSTALLATION INSTRUCTIONS

CONTENTS

- (1) Styling Bar
- (1) Driver Side Bracket
- (1) Passenger Side Bracket
- (2) 5/16-18 x 1" Flange Bolts
- (2) 5/16 Flange Nuts
- (1) Alcohol Prep Pad
- (2) Dual Lock Strips

TOOLS REQUIRED

- 6mm Allen Key
- 7mm, 8mm, 10mm, 13mm, 15mm Sockets
- Socket Wrench
- Drill
- 1/8" Drill Bit
- 2" Hole Saw
- Panel Removal Tool

SKU # 414382

STEP 1



Reach under the seat cushion and push the (2) tabs in while lifting the cushion. Remove the cushion from the vehicle.

STEP 2



Using a panel removal tool, remove the seat belt trim. Guide the seat belt through the slot in the bottom of the trim panel.

Repeat this procedure to the opposite side.



STEP 3

Firmly pull up on the upper trim panel to dislodge the clips securing the upper trim panel to the vehicle. Remove the upper trim panel from the vehicle.

Repeat this procedure to the opposite side.

Note: Some vehicle will have a electrical connector under this panel. Unplug the connector.

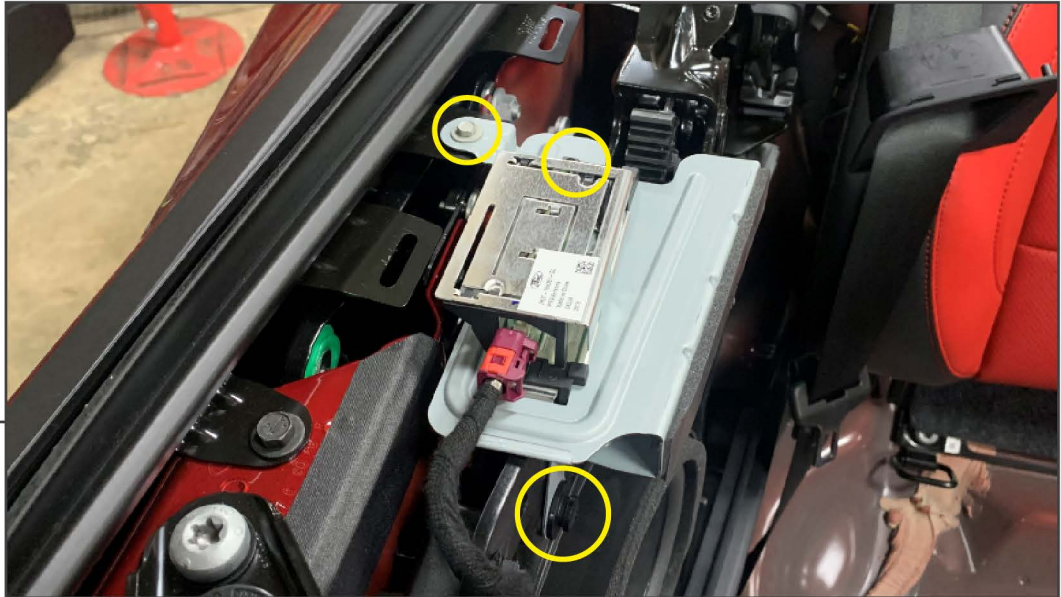


STEP 4

Dislodge the speaker cover panel clips by firmly pulling the speaker cover towards the interior of the vehicle. Remove the speaker cover panel from the vehicle.

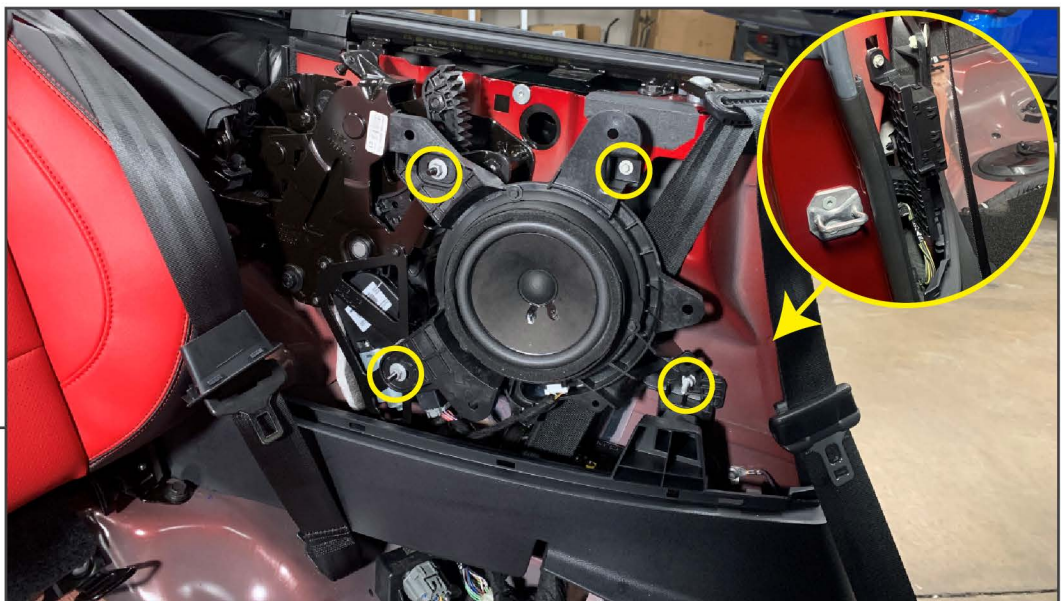
Repeat this procedure to the opposite side.

STEP 5



Passenger Side: Remove the transponder from the mounting bracket by removing (1) 8mm bolt. Do not unplug the transponder. Unbolt the (1) 7mm bolt from the vehicle, then remove (1) plastic push clip to remove the mounting bracket from the vehicle. The bracket will not be reused.

STEP 6

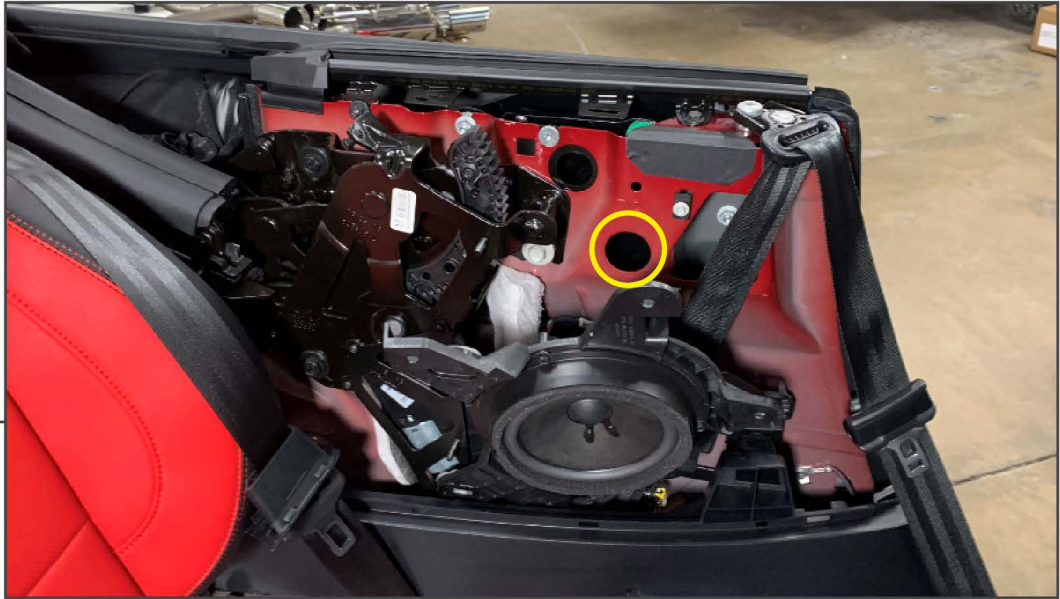


Remove (3) 10mm bolts, and (1) 7mm bolt from the speaker enclosure. Allow the speaker to hang away from the quarter panel.

Repeat this procedure to the opposite side.

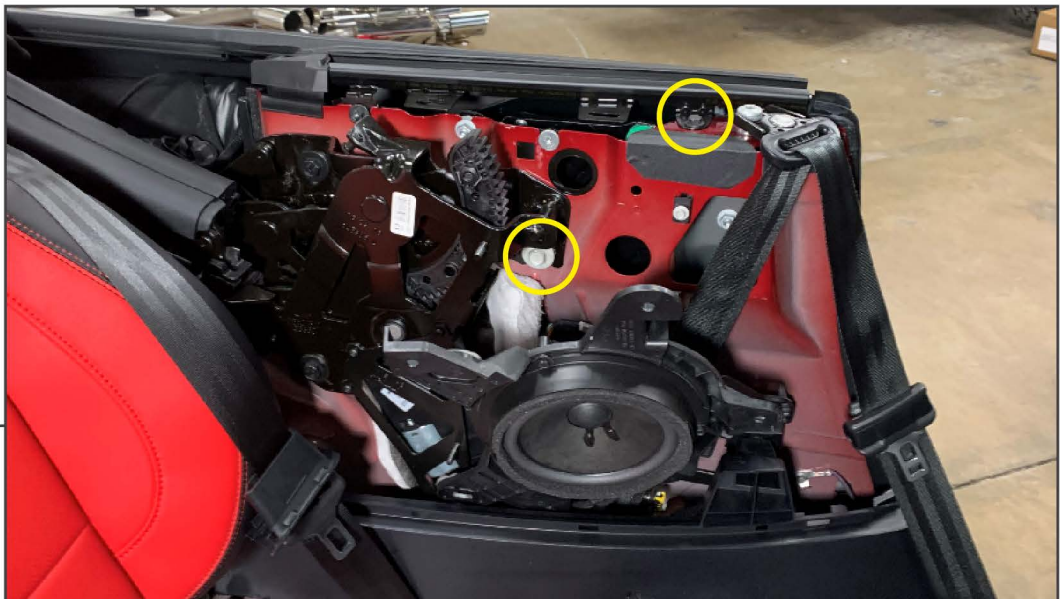
Note: The passenger side will have a module hanging behind the seat belt. Remove the retaining hardware to release the speaker enclosure.

STEP 7

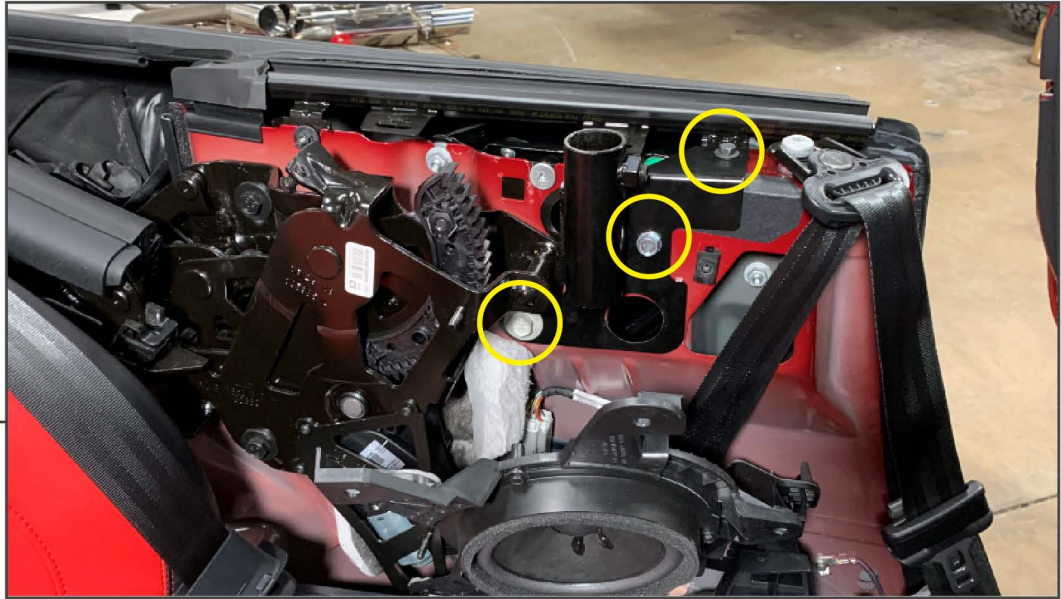


Remove the rubber grommet from the quarter panel using a panel removal tool.

STEP 8

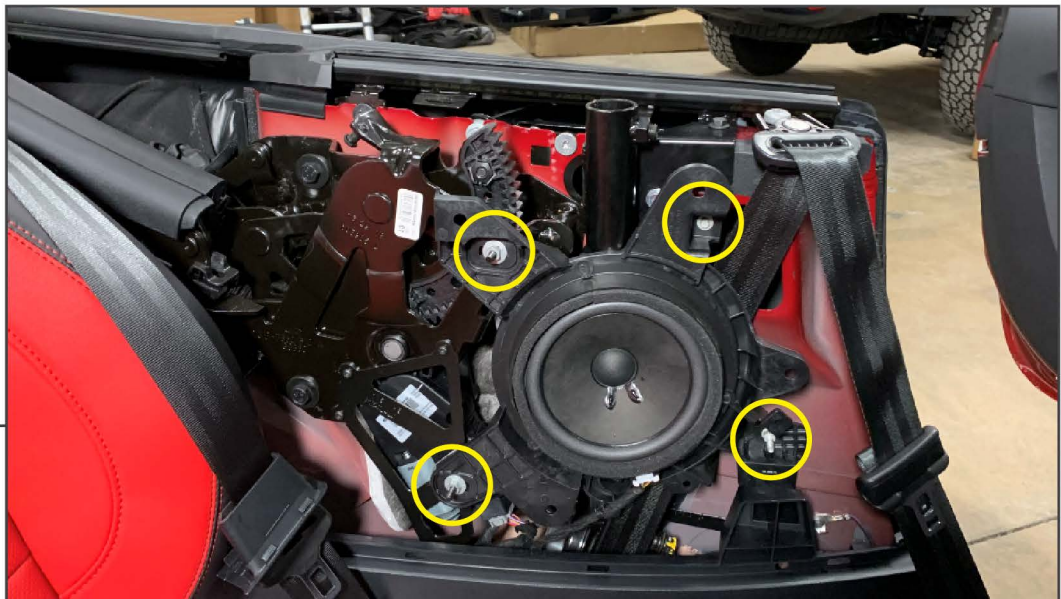


Remove (1) 15mm bolt from the convertible top motor assembly. Remove (1) 10mm bolt from the rear window seal.



STEP 9

Install the labeled styling bar brackets to the vehicle. Reuse the (1) 15mm window motor assembly bolt and (1) 10mm rear window seal bolt. Install (1) 5/16-18 x 1" flange bolt and (1) 5/16 flange nut through the middle of the bracket to secure the bracket to the quarter panel. Leave bolts loose until all bolts are started. Tighten all bolts evenly.



STEP 10

Reinstall the speaker assembly reusing original hardware.

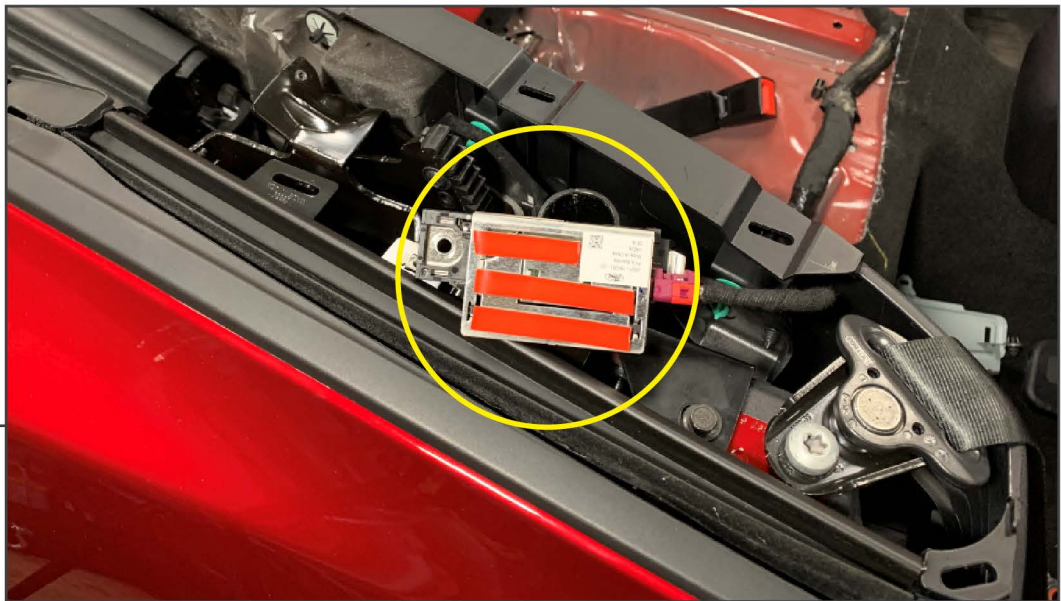
STEP 11



Reinstall the speaker cover panel to the vehicle.

Note: The rear portion of the panel has alignment pins. Ensure the alignment pins align with the vehicle prior to securing all the clips into the vehicle.

STEP 12



Passenger Side: Adhere the provided 3M Dual Lock to the back of the transponder. After drilling the upper trim panels, adhere the transponder to the underside of the upper trim panel.

STEP 13

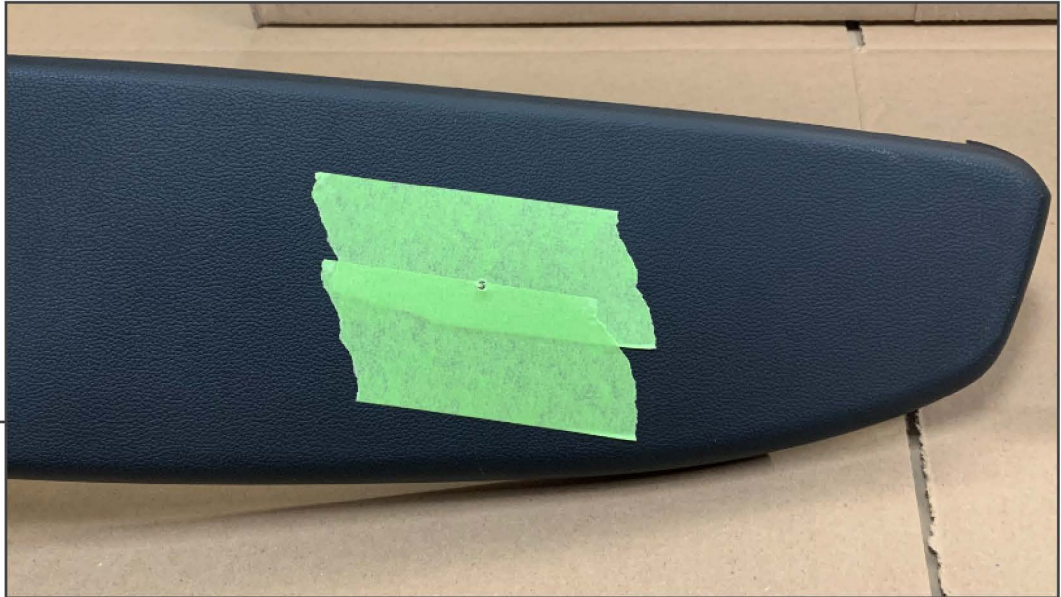


Cut out the drilling templates located at the end of the install guide. Place the templates in the designated location on both upper trim panels.

STEP 14



Marked with a black circle, drill a 1/8" hole in the upper trim panel.



STEP 15

Place masking tape over the previously drilled hole. Using a 2" hole saw, drill a hole into the upper trim panel using the 1/8" hole as the guide hole. Once drilled, clean the hole of any remaining debris.



STEP 16

Adhere the transponder to the upper trim panel (Passenger side only). Install the upper trim panel onto the vehicle. Plug in the electrical connector, if applicable. Install the seat belt and seat belt trim into the upper panel.

Note: Be sure the upper panel is along the inside of the convertible top when reinstalling the upper trim panel.



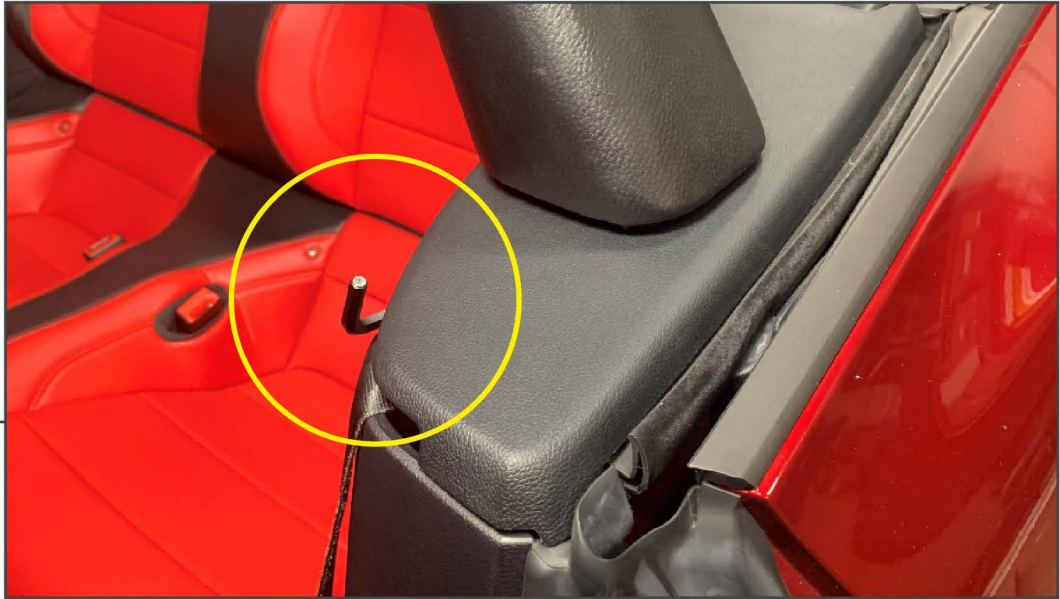
STEP 17

Install the rear seat cushion to the vehicle. Be sure the seat belt buckles are in their appropriate locations.



STEP 18

Install the styling bar into the previously installed brackets. Place one side of the styling bar partially in the bracket. Then pull the other end into the remaining bracket. Firmly push down the bar into the brackets.



STEP 19

Apply pressure to the styling bar to ensure the styling bar fits evenly to the upper trim panel. Using a 6mm Allen Key, secure the styling bar to the brackets.

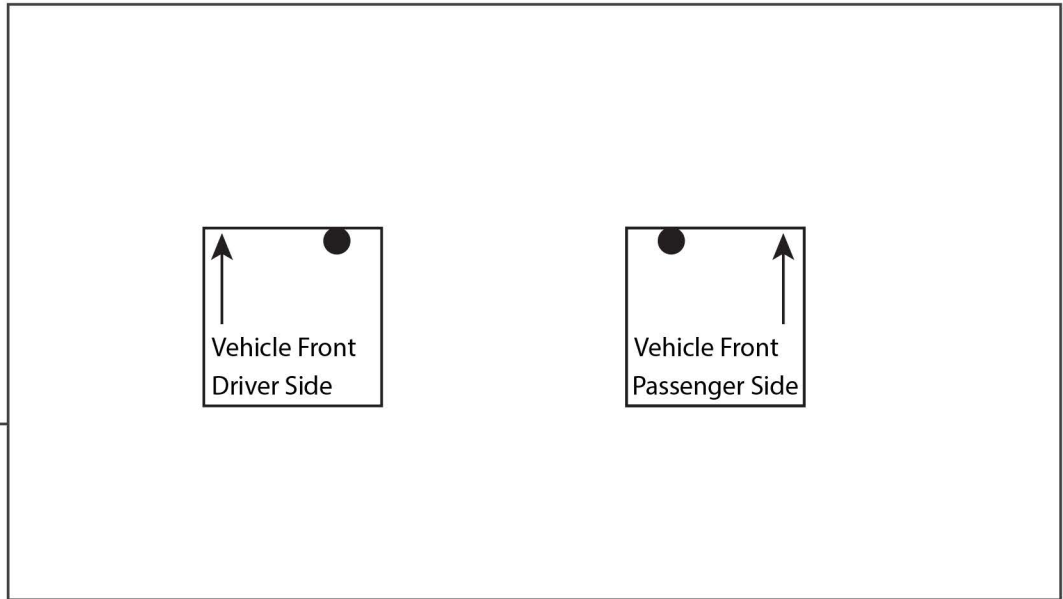
Repeat this procedure to the opposite side.



STEP 20

Installation is now complete.

**DRILLING
TEMPLATES**



Drill the black circle using a 1/8" drill bit to act as a pilot hole. Then use a 2" hole saw to make a circle in the upper trim panel.