



# HOOD STRUT KIT

(2005-2014 MUSTANG)

---

## INSTALLATION INSTRUCTIONS

### CONTENTS

---

(2) Hood Struts  
(2) Upper Mounting Brackets  
(2) Lower Mounting Brackets

### TOOLS REQUIRED

---

10mm, 13mm Sockets  
Ratchet  
Flathead Screwdriver/Pry Tool

SKU # 41282

**STEP 1**  
**(2010+ MODEL**  
**YEAR ONLY)**



**2010+ Mustang:** Relocating the sound tube under the fender is required for hood strut fitment. Begin by removing (1) 13mm bolt from the sound tube mount. Remove the fender mounted U-Nut for reuse later.

**2005-2009 Mustang:** Skip to Step 5.

**STEP 2**  
**(2010+ MODEL**  
**YEAR ONLY)**



**2010+ Mustang:** Using a flathead screwdriver/pry tool, remove the metal bushing from the mounting bracket.

**STEP 3**  
**(2010+ MODEL**  
**YEAR ONLY**



**2010+ Mustang:** Remove the square bushing from the bracket and cut 1/2" from the center of it. Place the two halves of the bushing onto the top side of the bracket.

**STEP 4**  
**(2010+ MODEL**  
**YEAR ONLY**



**2010+ Mustang:** Re-install the metal bushing into the bottom right side of the bracket. Re-install the sound tube assembly under the fender using the previously removed U-Nut and 13mm bolt.

**STEP 5**



Open the vehicle hood and prop open with the vehicle hood prop rod.

Remove (1) 10mm bolt from the rear of the fender.

**STEP 6**



Install the lower mounting bracket to the vehicle fender, secure using the original 10mm bolt.

D-L = Driver's Lower Bracket

P-L = Passenger's Lower Bracket

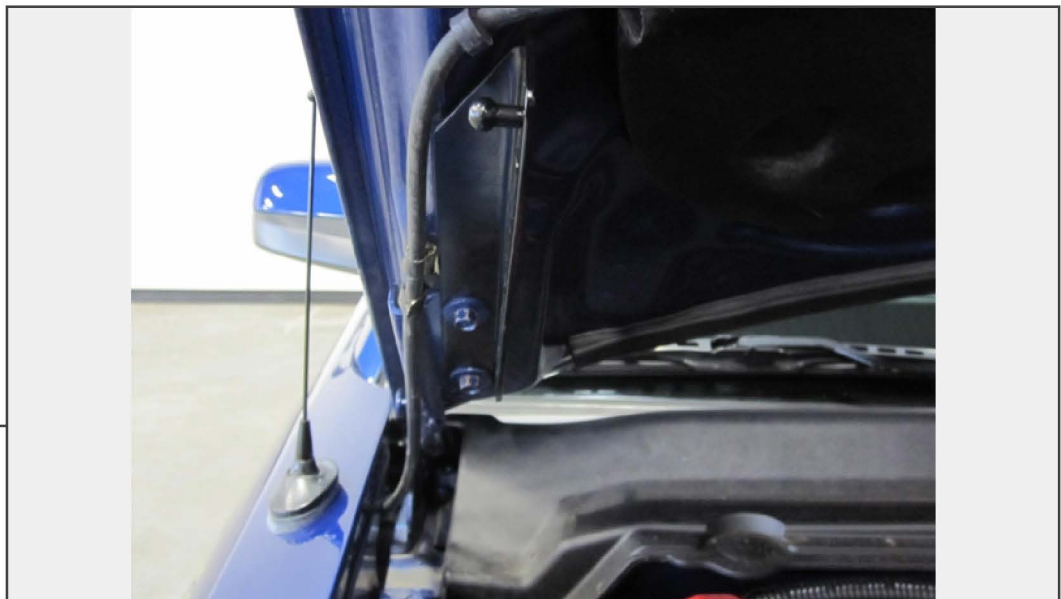


**STEP 7**



Verify the hood is secure with the vehicle prop rod, then remove the upper hood mounting bolt.

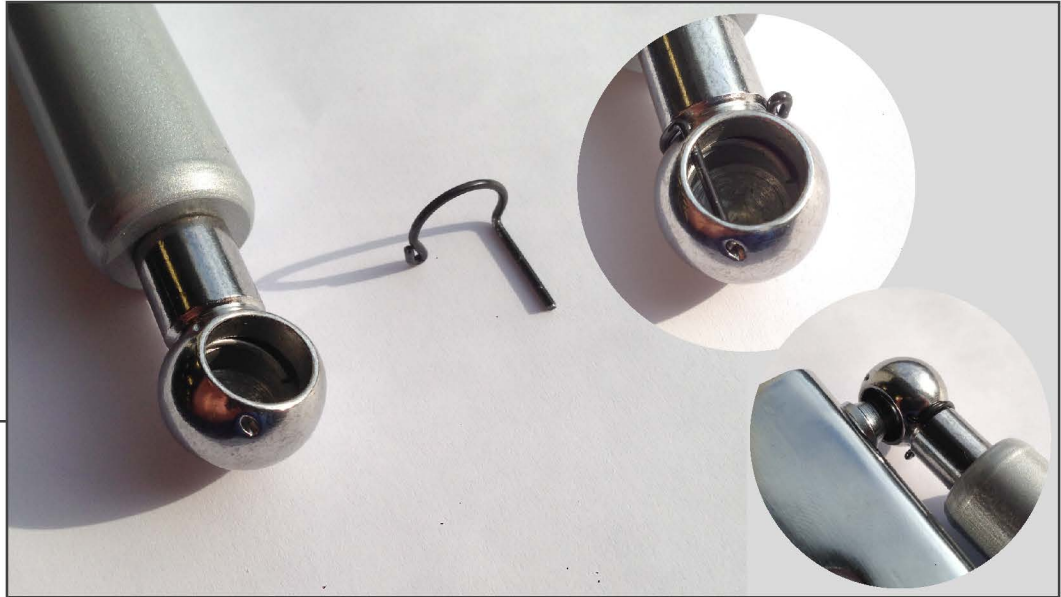
**STEP 8**



Loosen the lower hood mounting bolt enough to slide the upper mounting bracket into place between the outside of the hood hinge and the hood bolts.

D-U = Driver's Upper Bracket  
P-U = Passenger's Upper Bracket

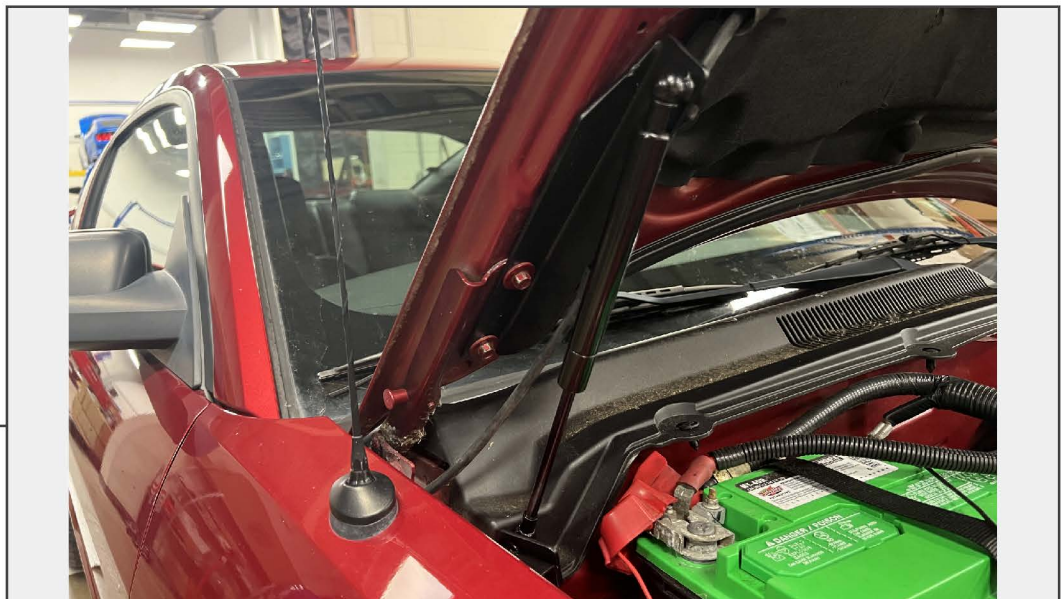
**STEP 9**



Gas Shock Installation: Remove the retaining clip. Place the gas strut on to the ball stud. Then, re-install the retaining clip.

Note: Ensure the retaining clip slides all the way through.

**STEP 10**



Repeat steps 5-9 for the remaining side of the vehicle. Be sure to close hood carefully after installation to ensure proper alignment of the hood. If any adjustment is needed, the mounting holes in the strut brackets are slotted for adjustability.

Once the hood struts are holding the vehicle hood, remove the vehicle hood prop rod, if desired.

Installation is now complete.