



CAT-BACK EXHAUST SYSTEM

(2015-2017 MUSTANG GT)

INSTALLATION INSTRUCTIONS

CONTENTS

- (1) Driver's Side Muffler
- (1) Passenger's Side Muffler
- (1) Driver's Side Mid-Pipe
- (1) Passenger's Side Mid-Pipe
- (1) X-Pipe
- (4) 3" Exhaust Clamps

TOOLS REQUIRED

- 13mm Socket
- 15mm Socket
- 17mm Socket
- Socket Wrench/Impact
- Jack & Jack Stands
- Spray Lubricant
- Reciprocating Saw

SKU # 412341/412342

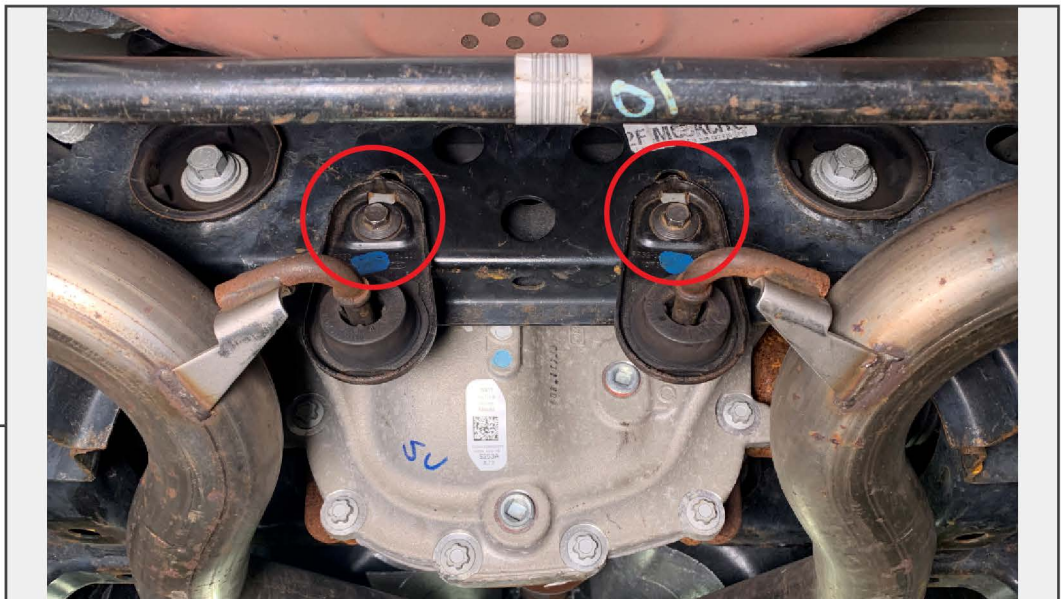


STEP 1



Raise and support the vehicle using a jack and jack stands.

STEP 2

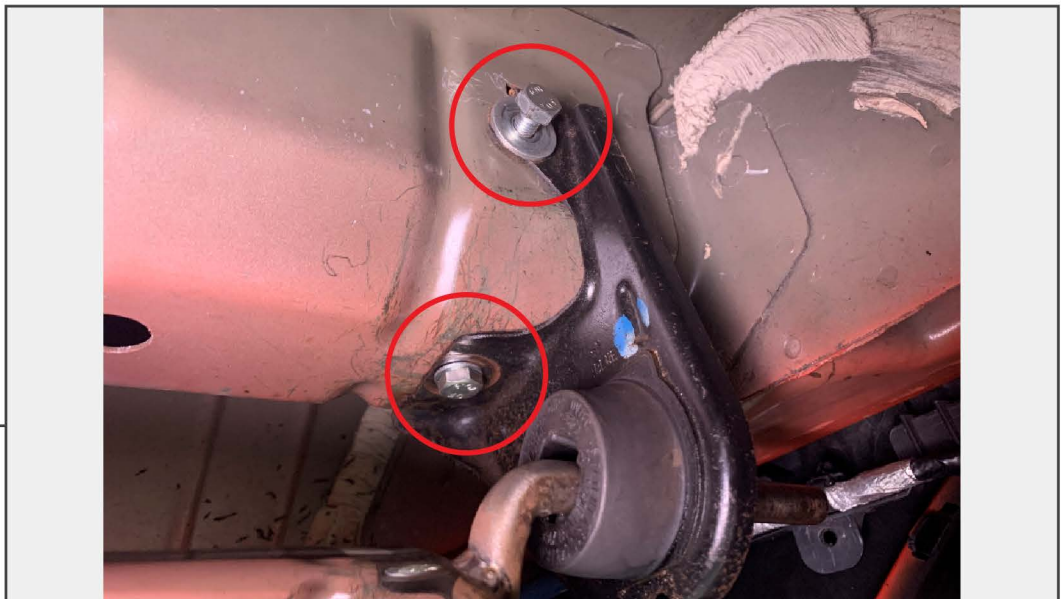


Remove (2) 13mm bolts from the hangers mounted to the vehicle sub-frame.



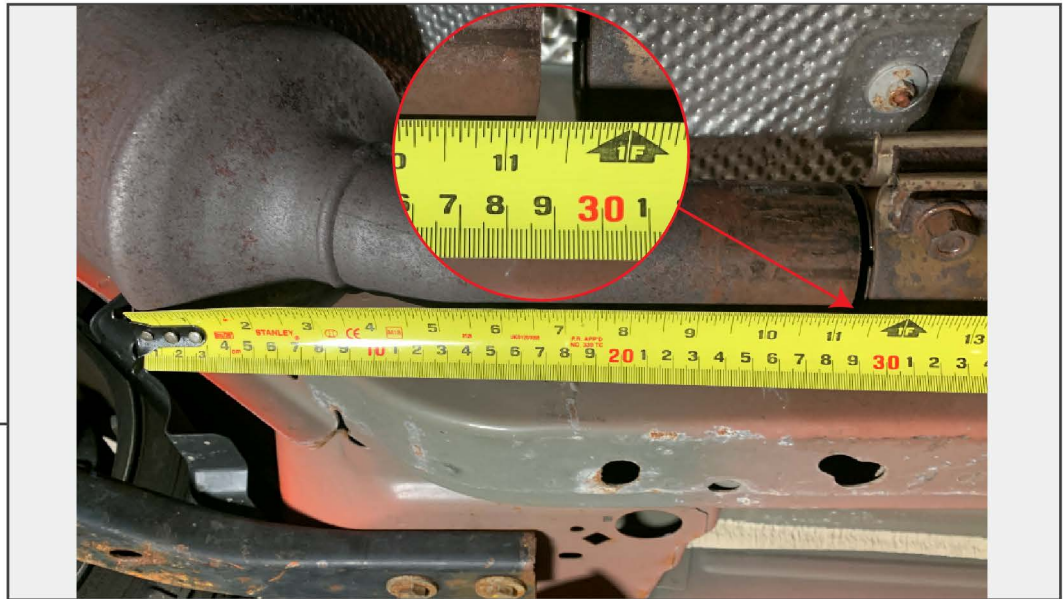
STEP 3

While supporting the exhaust, loosen (2) exhaust clamps on the front of the resonator and slide the clamps aside.



STEP 4

Remove the (2) 13mm bolts per hanger to remove the exhaust hangers located behind the bumper. Lower the exhaust system down and set aside.



STEP 5

Measure back 11.25" from the lower casing on the catalytic converter on both sides, and leave a guide line using a permanent marker. Support the rear of the exhaust, and cut along the marked areas.

Note: Due to exhaust and floor clearance, be cautious while cutting the exhaust.



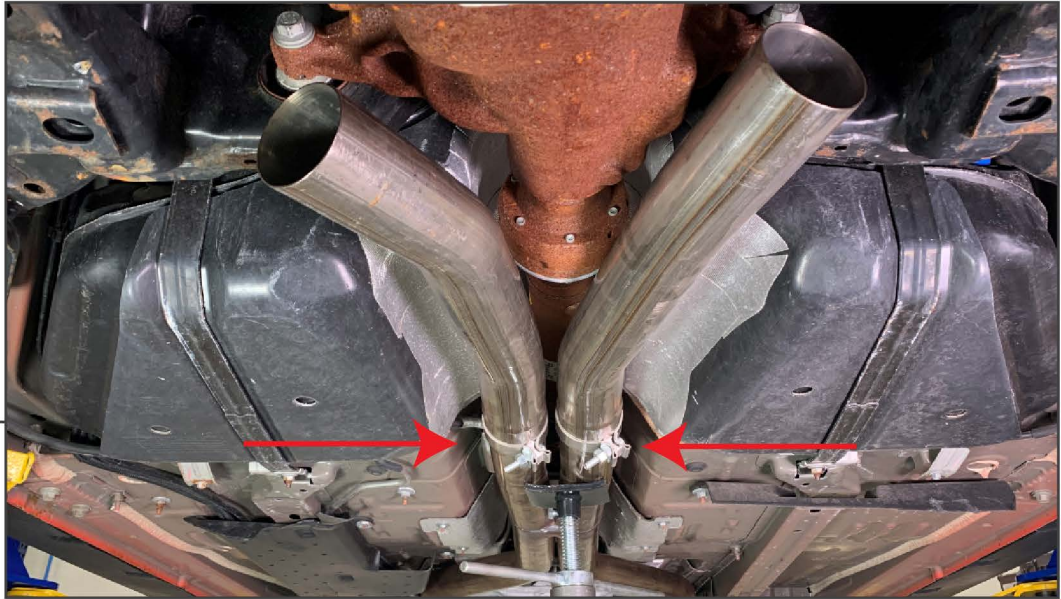
STEP 6

Attach the original resonator's exhaust clamps to the X-Pipe, then slide the X-Pipe onto the catalytic converter pipes. Push the X-Pipe in until it bottoms out onto the catalytic converter pipes. Tighten the clamps until secure.

Note: The driver's side of the X-Pipe is longer than the passenger's side.



STEP 7



Attach the mid-section pipes to the X-Pipe using provided 3" exhaust clamps. Do not tighten the clamps.

Note: The driver's side mid-pipe has sharper bends.

STEP 8



Slide the front and rear hangers onto the new mufflers, then align the hangers to the vehicle while aligning the exhaust pipe to the mid-section pipes.



STEP 9

When both mufflers are attached to the vehicle, align the pipes until the fitment to the rear bumper is even on both sides. Tighten all exhaust clamps.

Installation is now complete.