



NON-ADJUSTABLE REAR LOWER CONTROL ARMS

(2005-2014 MUSTANG EXCL. GT500)

INSTALLATION INSTRUCTIONS

CONTENTS

- (1) LH Lower Control Arm
- (1) RH Lower Control Arm

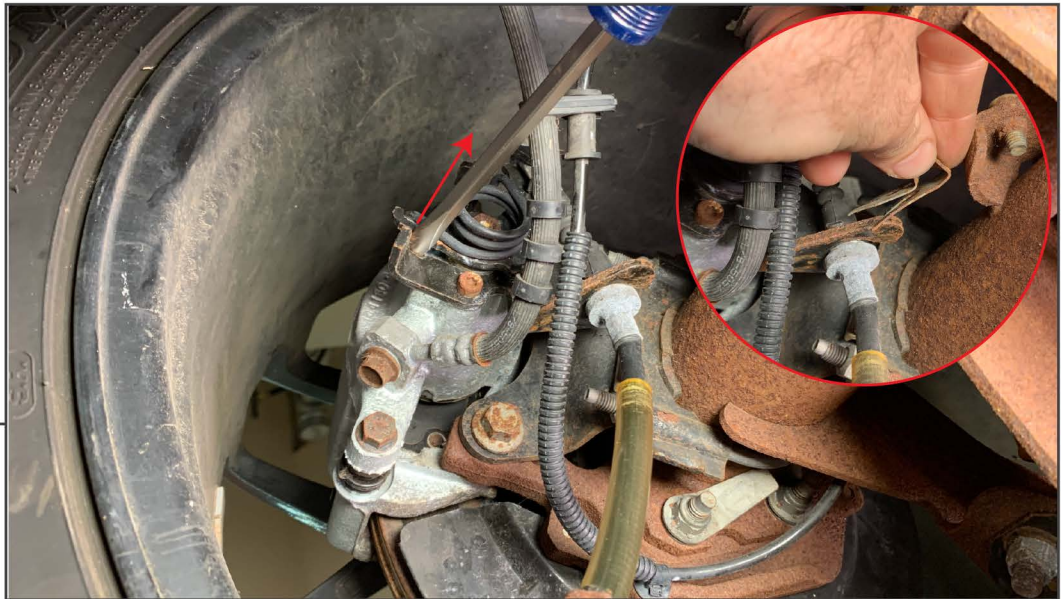
TOOLS REQUIRED

- Flat Screw Driver
- 18mm Socket
- Socket Wrench
- Adjustable Wrench

SKU #410882/410883



STEP 1



Using a screw driver, pry up on the emergency-brake lever and remove emergency brake cable from the caliper. Pull the retaining clip from the cable bracket and remove the cable from the bracket. Feed the cable through the control arm.

STEP 2

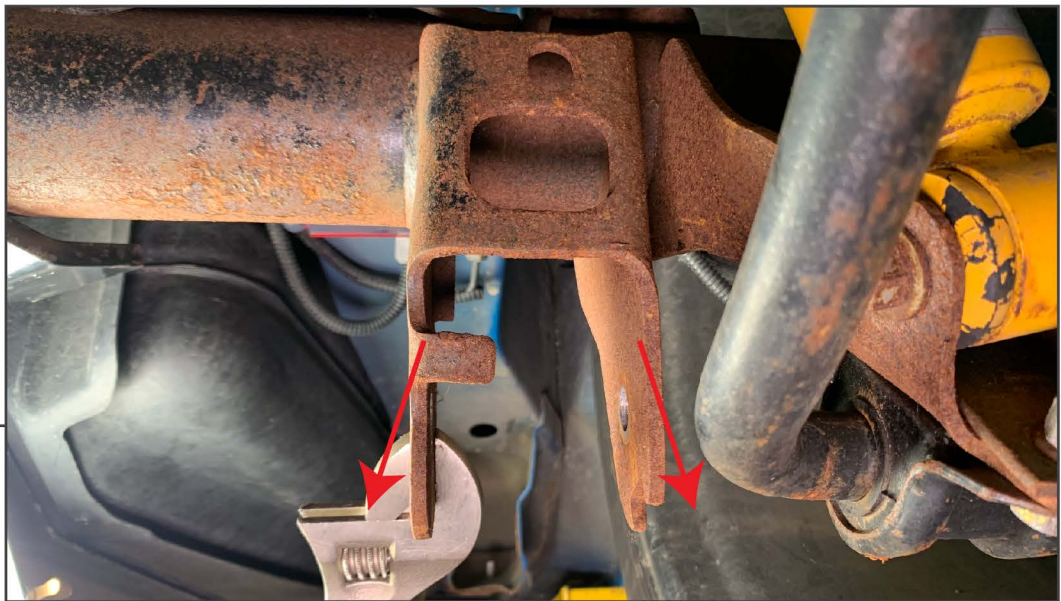


Using a 18mm socket, remove the rear bolt.



STEP 3

Using a 18mm socket, remove the front bolt.

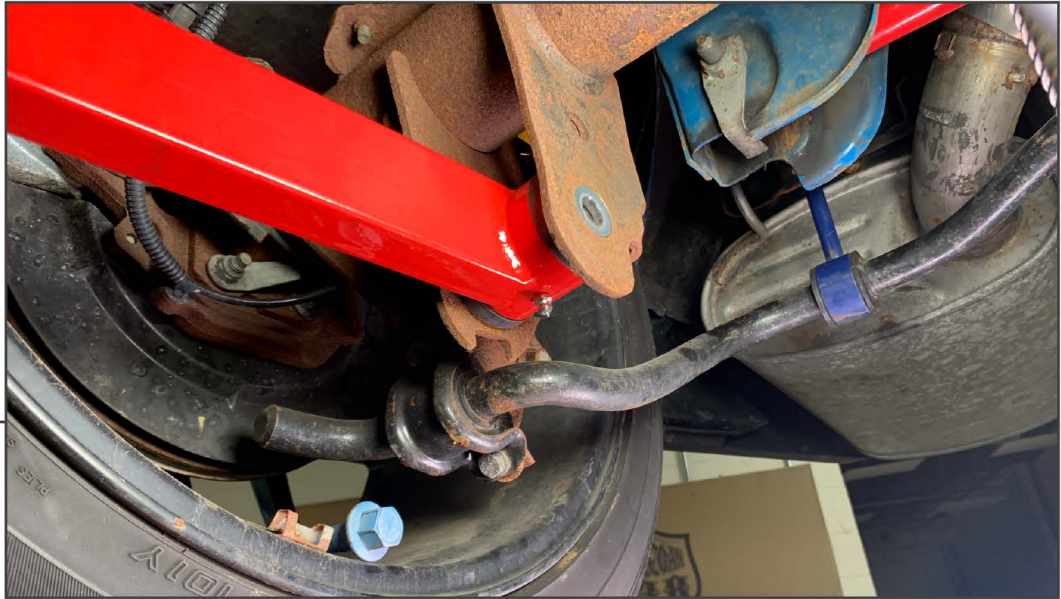


STEP 4

Test fit the lower control arm into the axle mounting pocket. Over time, these brackets get bent inward, if the lower control arm doesn't fit, use an adjustable wrench to pry open up the bracket pocket open.

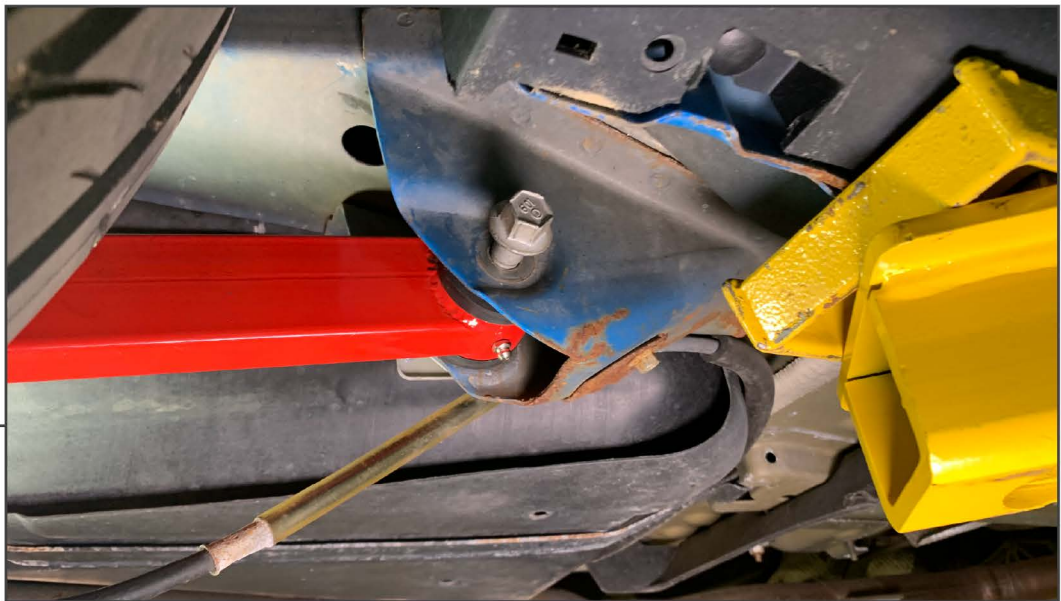


STEP 5



The offset portion of the lower control arm needs to face the center of the vehicle. This needs to be identified prior to step 6.

STEP 6



Apply grease to the faces of bushings prior to installation. Install the lower control arm into the chassis control arm pocket using the factory hardware. **Note: the grease fitting needs to be pointing down. Push the control arm in to the axle mount and attach using the factory hardware. Then bolt the control arm into the axle pocket using the factory hardware.



STEP 7

Reattach the emergency brake cable in reverse order. Zip tie the cable to the lower control arm as shown. Repeat the process on both sides and then torque all hardware to 129 ft. lbs. Grease the control arms every oil change.