



---

# DECKLID PANEL EMBLEM

(2015-2020 MUSTANG)

---

## INSTALLATION INSTRUCTIONS

### CONTENTS

---

(1) Decklid Emblem

### TOOLS REQUIRED

---

Panel Removal Tool  
Flat Blade Screw Driver  
7mm Socket  
Socket Wrench  
Drill  
Drill Bits

SKU #410666/410680



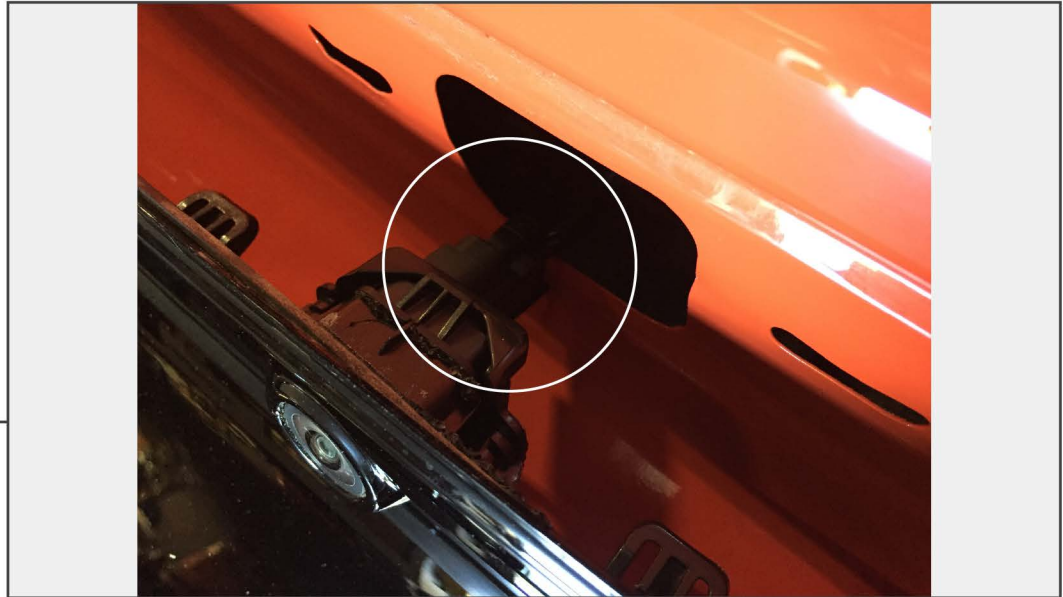
**STEP 1**

Using a panel removal tool, remove the caps covering the deck lid panel bolts. Then, remove the (4) 7mm screws.



**STEP 2**

Use the panel removal tool to gently separate the factory deck lid panel from the deck lid.



**STEP 3**

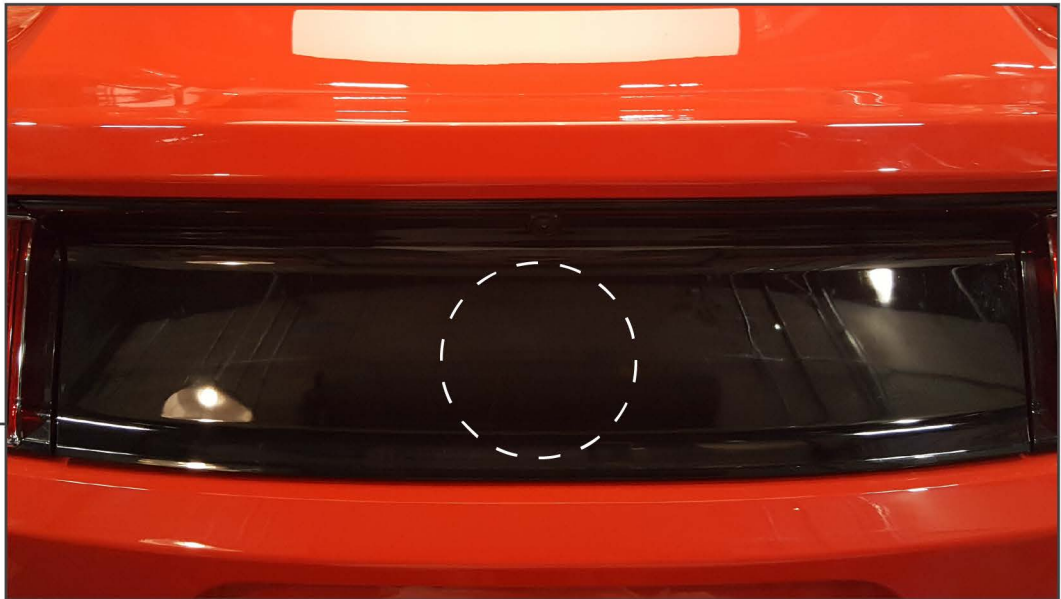
Unplug the reverse camera. Then remove the panel from the vehicle.



**STEP 4**

Remove the deck lid emblem by slowly/carefully removing the plastic weld from the back of the deck lid panel. Use an oversized drill bit and only remove enough material so that you can remove the emblem.

**STEP 5**



Wash the deck lid panel with soap and water. Allow the panel to dry. \*\*Recommended: Wipe the panel down with isopropyl alcohol to ensure the cleanest surface possible.

**STEP 6**



Test fit the emblem on the center of the decklid panel, then peel the 3M tape backing from the emblem. Center the emblem and apply firm even pressure to ensure proper adhesion to the decklid panel. Reinstall the decklid panel following steps 1-3 in reverse order. Installation is now complete.