



---

# SIDE SCOOP W/ INSERT UNPAINTED

(2015-2020 MUSTANG)

---

## INSTALLATION INSTRUCTIONS

### CONTENTS

---

- (1) LH Side Scoop
- (1) LH Insert
- (1) RH Side Scoop
- (1) RH Insert
- (1) Tape Roll

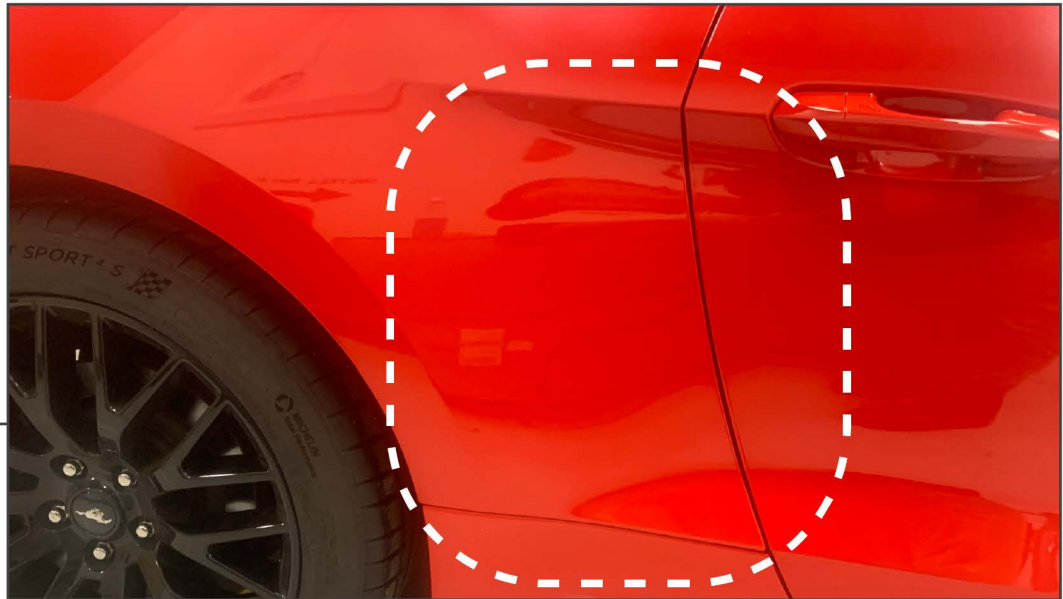
### TOOLS REQUIRED

---

Razor Knife

SKU # 408853

**STEP 1**



Begin the installation by thoroughly cleaning the quarter panel with automotive grade soap and water. Allow the panel time to fully dry. \*\*Recommended: Wipe the paint down with isopropyl alcohol to ensure the paint is clean and free of any contaminants.

**STEP 2**



Test fit the insert into the scoop. They only fit one way. Apply tape to the insert. Peel back the tape backing and install the insert onto the side scoop.



**STEP 3**

Apply the supplied 3M tape to the tape ledges around the back of the side scoop and insert.



**STEP 4**

Before removing the tape backing, test fit the side scoop to familiarize yourself with how it fits. Align the top edge with the sharp body line just behind the door. Align the bottom edge with the body line just above the rocker. Then, peel back the tape backing and install the side scoop to the vehicle. Apply firm even pressure on all tape ledge locations to ensure proper adhesion. Installation is now complete.