



GT500 STYLE ALUMINUM HOOD

(2015-2017 MUSTANG EXC. GT350/GT500)

INSTALLATION INSTRUCTIONS

CONTENTS

- (1) Hood
- (1) Hood Insert
- (1) Insert Cover
- (9) Screw Clips
- (9) Flat Washers
- (9) Gold Machine Screws
- (9) Black Plastic Clips

TOOLS REQUIRED

- Soft Pry Tool
- 10, 15mm Socket
- Ratchet
- Phillips Head Screw Driver

SKU # 408767

STEP 1

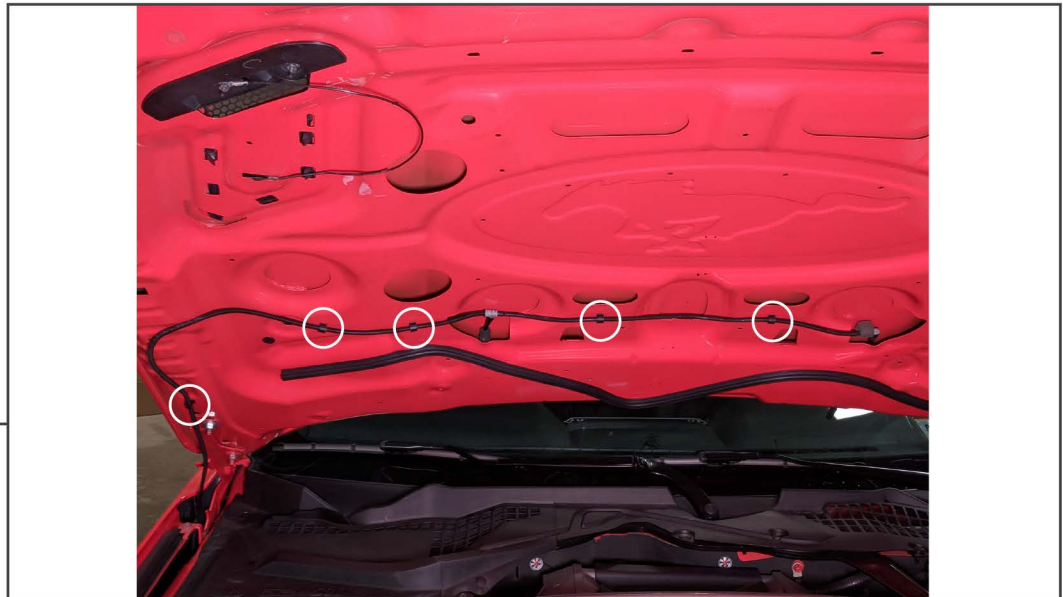


Begin by raising the hood to gain access to the under hood insulation. Remove the (15) push pins that hold the insulation liner to the hood.

STEP 2

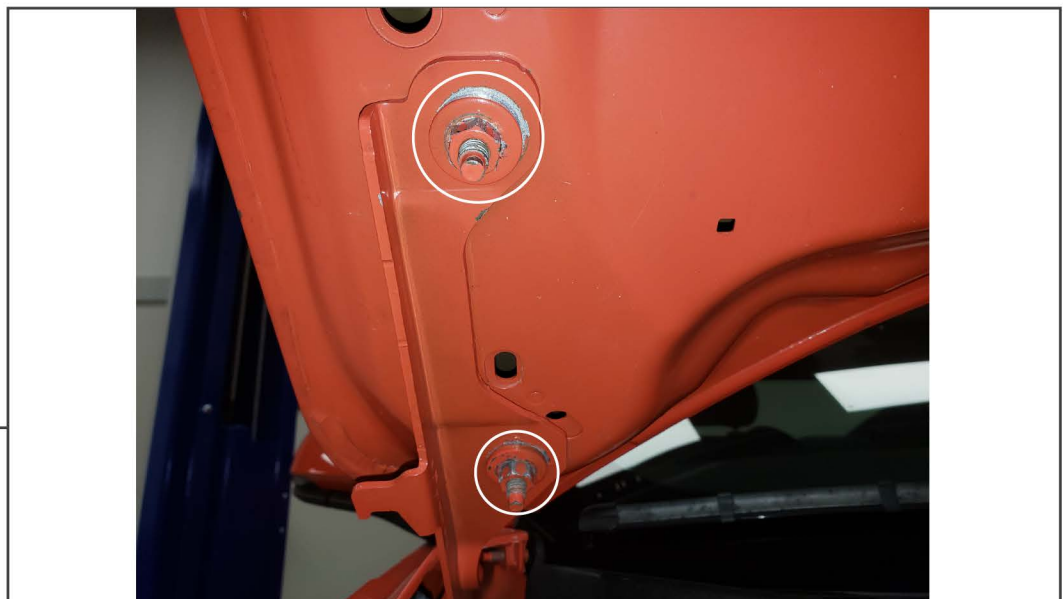


Locate the Squirter nozzles, and remove by carefully prying away from the hood and disconnecting the hose.



STEP 3

Using a trim panel removal tool, remove the (5) push clips holding the windshield washer line to the hood.



STEP 4

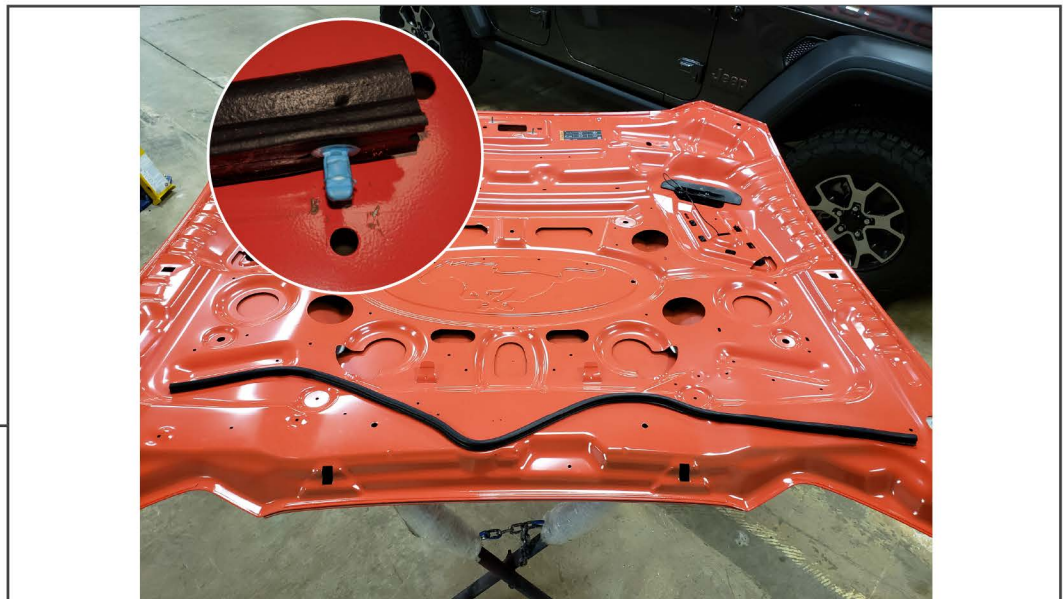
With a helper, carefully remove the (2) 15mm hood hinge nuts on both sides of the hood. Place the hood on a soft padded surface so that you can easily access the underside of the hood.

STEP 5



Remove the factory hood latch by removing the (2) 10mm nuts.

STEP 6



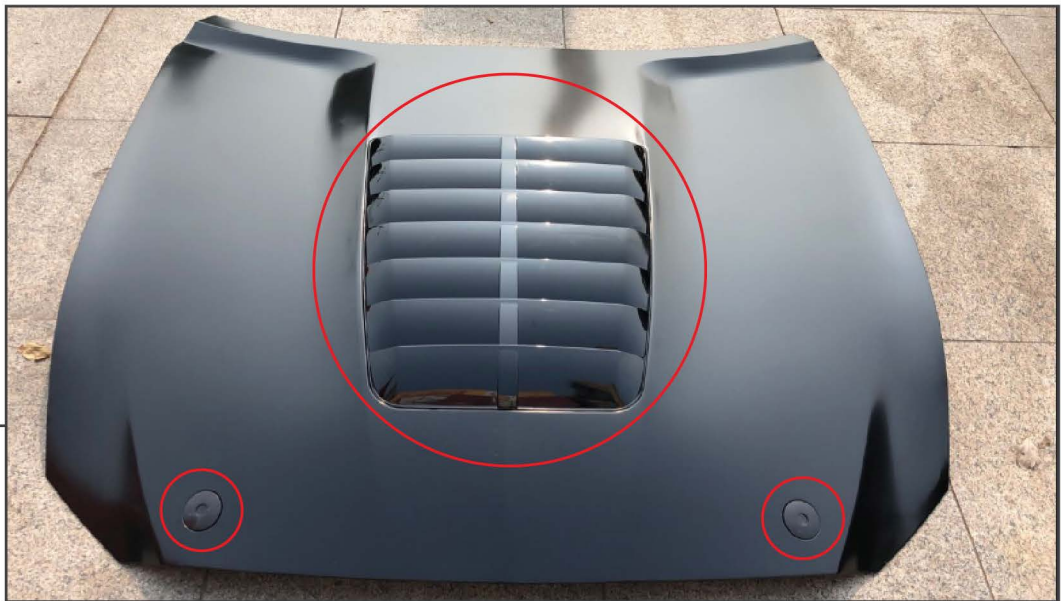
Using a trim panel removal tool, carefully remove the push clips securing the weather stripping to the hood. Once removed, transfer the weather stripping and clip into place on the new hood.

STEP 7



Install the hood latch to the new hood using the factory 10mm nuts.

STEP 8



Install the hood insert. Using the (9) provided screw clips, washers and gold machine screws. Install the decorative hood pins using the provided 3M double sided tape.

STEP 9

With a helper, install the hood using the factory (4) 15mm nuts. Be sure to properly align the hood with the fenders of the vehicle. You may have to repeat this a few times to achieve desired fitment. Then reinstall the windshield washer fluid line, and nozzles. ****Note:** Be careful opening and closing the hood when aligning for proper fitment so damage does not occur to the paint.

STEP 10

On the underside of the hood, install the hood insert cover using (9) provided plastic push pins.



STEP 11

Carefully close the hood. Installation is now complete.