



---

# GT500 STYLE REAR BUMPER

(2018-2023 MUSTANG - REUSES FACTORY 2018-2020 Diffuser)  
(2015-2017 MUSTANG - REQUIRES SKU # 408763)

---

## INSTALLATION INSTRUCTIONS

### CONTENTS

---

- (1) Bumper Cover
- (1) Reverse Sensor Bracket Kit

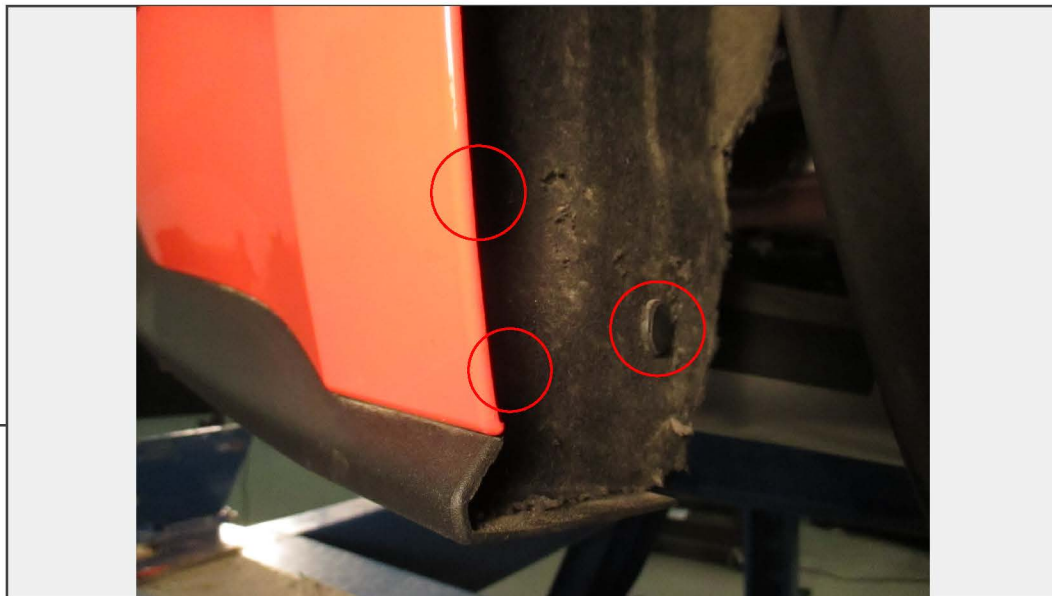
### TOOLS REQUIRED

---

- Soft Pry Tool
- 7,8,10mm Socket
- Socket Wrench/Ratchet
- Drill/ Drill Bits

SKU # 408764 / 408765 /  
406342 / 408763

**STEP 1**



Raise and support the rear of the vehicle with a jack and support with jack stands. Remove the (3) plastic push clips that secure the fender liner to the bumper, repeat on both sides.

**STEP 2**

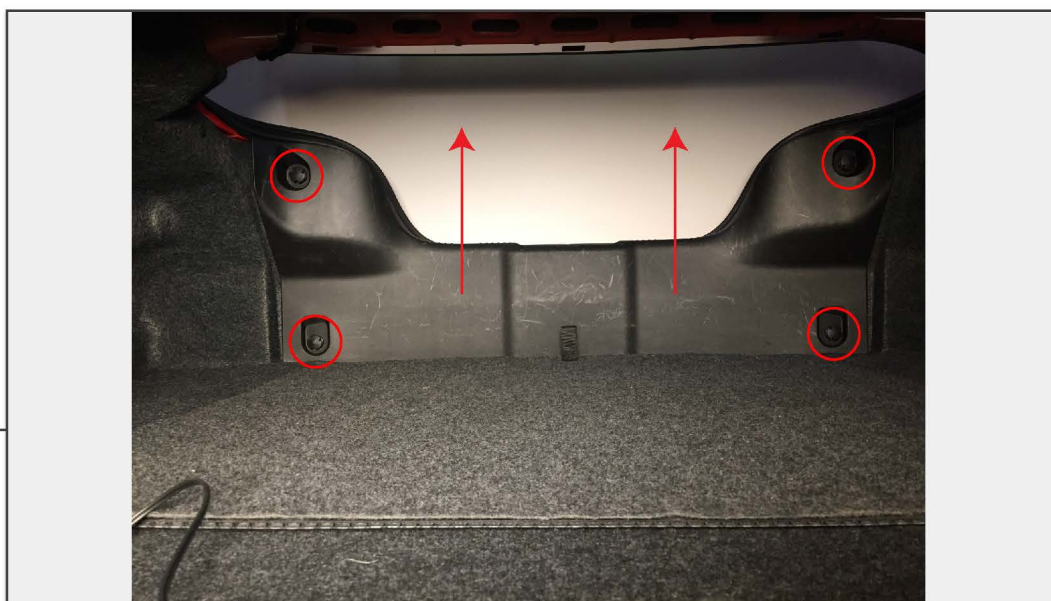


Fold the fender liner back to access the (3) 7mm bumper cover screws. Repeat this process on both sides of the bumper.



**STEP 3**

Remove the (2) 7mm screws securing the bumper to the bottom bumper bracket.



**STEP 4**

Remove the trunk trim panel by unscrewing the (4) cargo net fasteners. Pull the trim panel up and away from the vehicle.

**STEP 5**



Fold back the inner trunk liners to access and remove the (3) nuts securing the tail lights to the vehicle. Unclip the electrical connections and remove the lights.

**STEP 6**



With the fasteners and tail lights removed, carefully pull the bumper cover away from the vehicle.



**STEP 7**

Firmly pull the bumper from the vehicle. The top edge of the bumper is held on with clips. Firm pressure will detach the bumper from the vehicle.



**STEP 8**

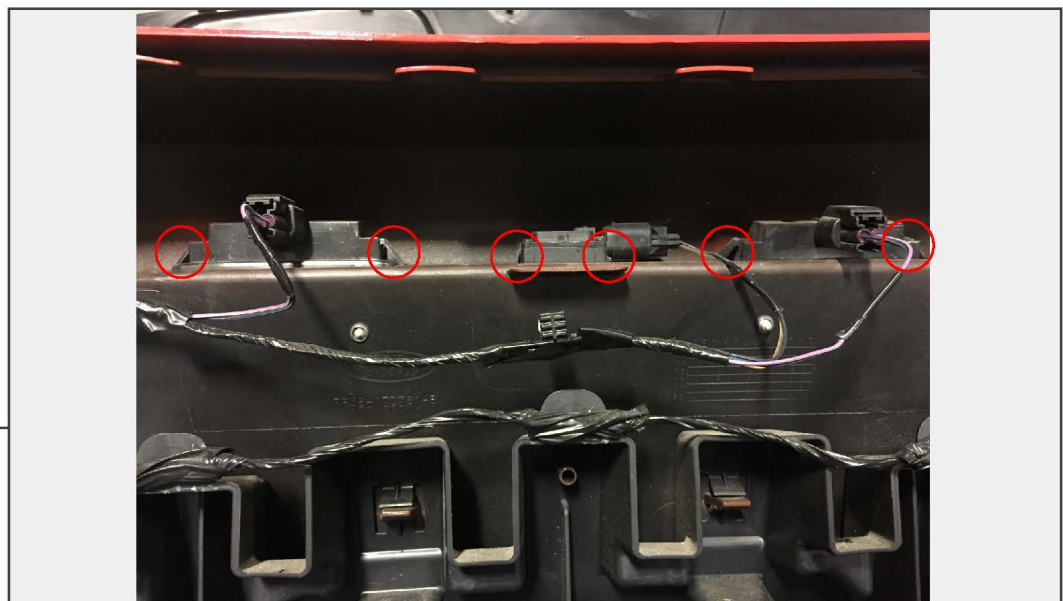
On the right hand side, locate and unplug the bumper wiring connection. Remove the bumper and place it on a soft surface.

**STEP 9**

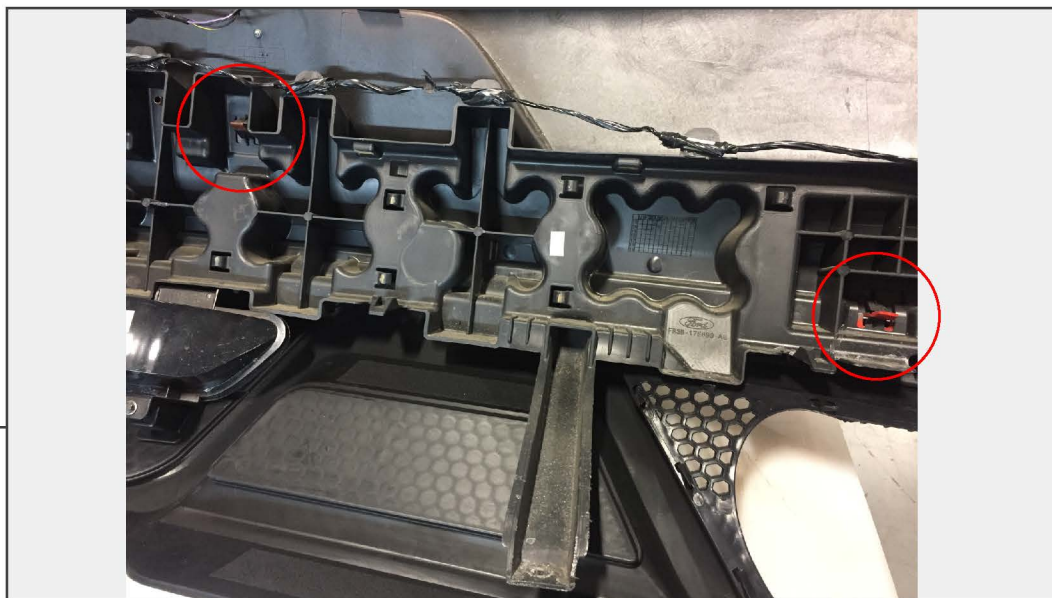


Unplug and unclip the rear bumper lights. Transfer the light to the new bumper.

**STEP 10**

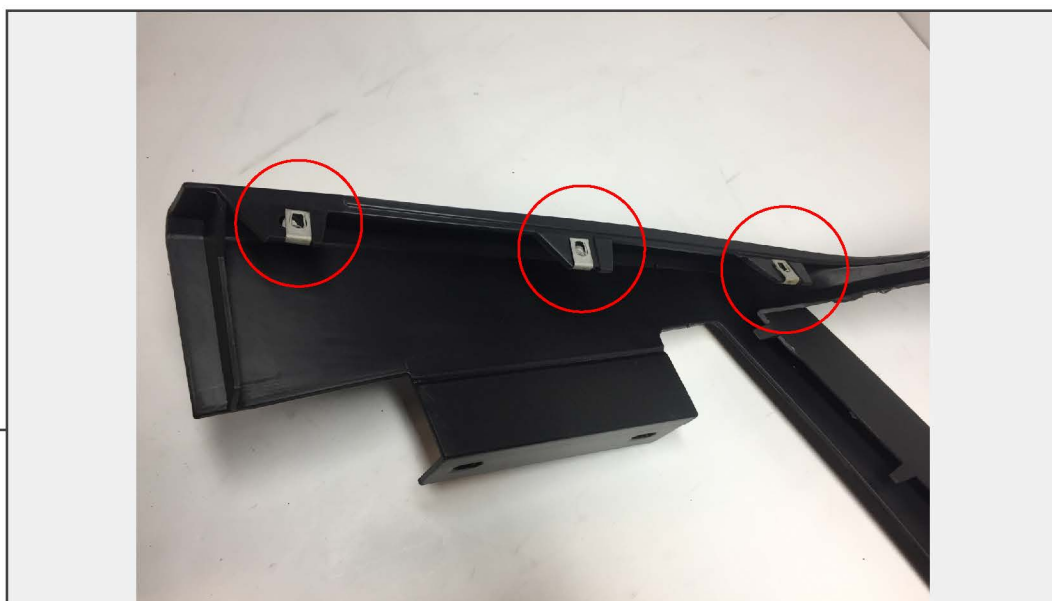


Unclip the license plate light housing and trunk button. Transfer them to the new bumper.



**STEP 11**

Unclip the rear bumper brace from the bumper. \*\*If equipped, unplug and removed the backup sensors to the new bumper.



**STEP 12**

Transfer the screw clips from the factory bumper to the rear valance/diffuser.

**STEP 13**



Install the rear valance/diffuser on to the bumper. Firmly press the valance/diffuser into the bumper. The parts will “click” together when properly install.

**STEP 14**



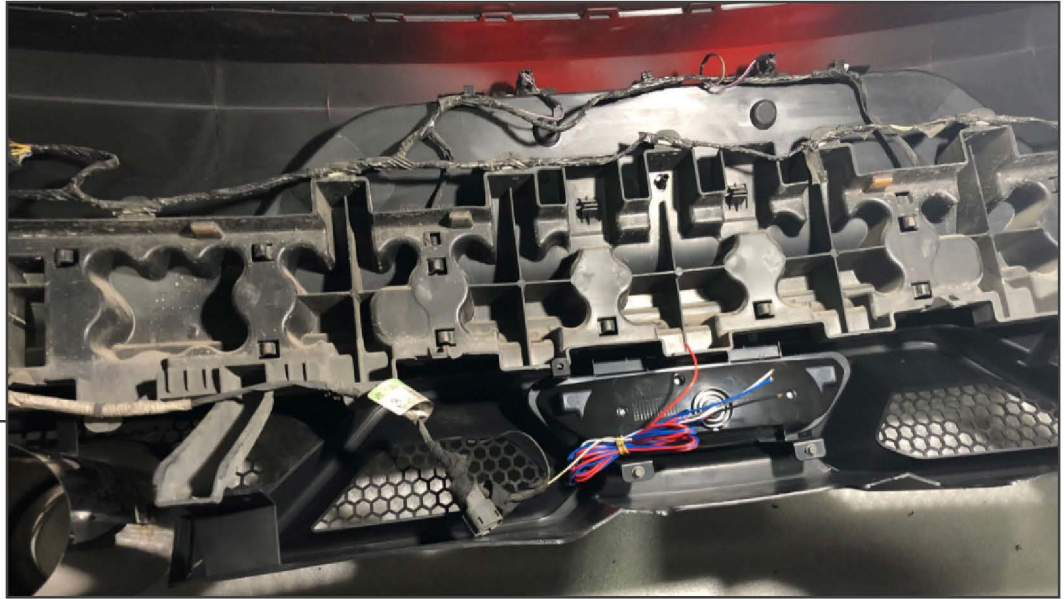
Transfer the reverse light from the factory bumper to the new bumper using the factory hardware.

**STEP 15**

Using 10mm socket, remove the nut securing the rear bumper reflectors. Then transfer the reflectors to the new bumper. Reuse the factory nut.

**STEP 16**

If equipped with backup sensors, apply double-sided tape to the backup sensor brackets. Drill the hole for the backup sensors. There are marks on the backside of the bumper where to drill and mount the brackets.

**STEP 17**

Then clip the bumper brace and wiring harness on to the bumper. Ensure electrical connector are plugged in.

**STEP 18**

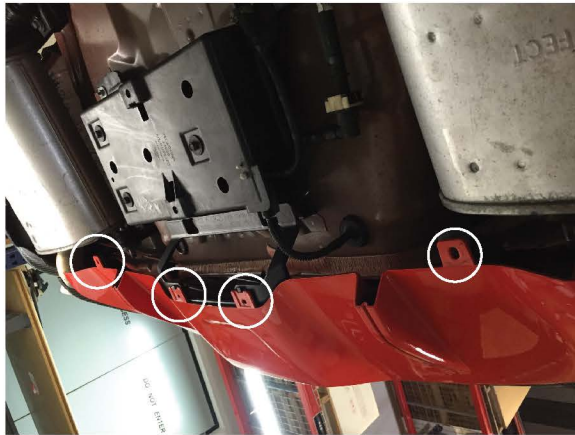
Clip the bumper on to the vehicle. Test the lights prior to reinstalling the bumper in reverse order. Ensure the electrical connection removed in Step 8 doesn't get pinched between the metal and the bumper otherwise the bumper will not fit correctly. Installation is now complete.

# MP CONCEPTS

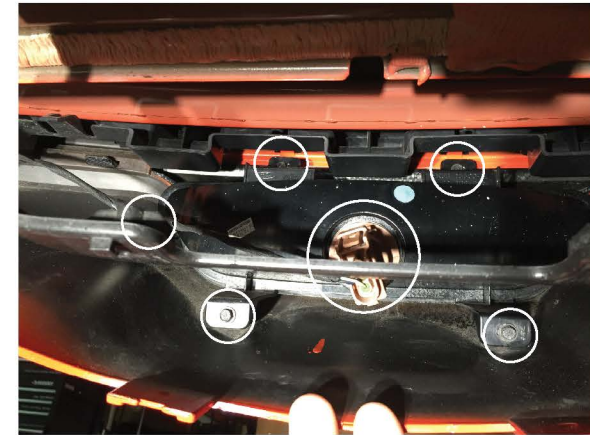
## LED Reverse Light

**Contents:**  
(1) LED Reverse Light

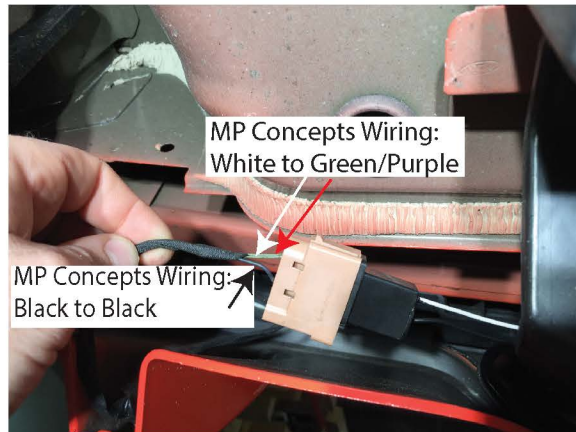
**Tools Required:**  
Jack & Jack Stands  
7mm, 8mm Sockets  
Ratchet  
Trim Panel Removal Tool  
Flat Head Screw Driver



**Step 1**  
Begin by removing the (2) screws and (2) clips securing the lower bumper valence.



**Step 2**  
Pull the valance down to gain access to the (4) factory reverse light screws (7mm). Un-clip the plug on the factory light and remove the harness from the housing. Install the MP Concepts light the same way the stock light came out. Re-use the (4) factory screws.



**Step 3**  
Connect the MP Concepts wiring to Factory wiring harness as follows.

Factory Wiring Harness:	MP Concepts Wiring:
Black	Black
Green w/Purple Stripe	White



**Step 4**  
Locate the body grommet on the bottom of the trunk. Carefully pierce only the body grommet so that you can feed the Blue and Red wire from the reverse light into the trunk.

# MP CONCEPTS

## LED Reverse Light



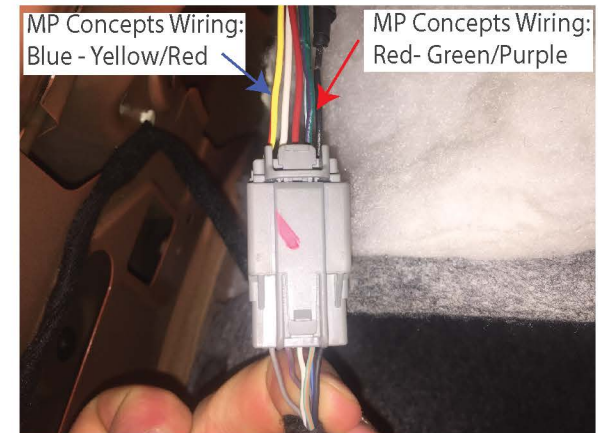
**Step 5**  
Remove the (4) twist on fasteners holding the trunk panel in place. Then apply slight upward pressure to remove the panel from trunk.



**Step 6**  
Using a panel removal tool or pliers, remove the plastic clip holding the trunk liner in place.



**Step 7**  
Fold back the trunk liner and locate the driver side tail light harness. Unclip the harness for easier access to the wiring harness.



**Step 8**  
Using the supplied wire splice, tap the following:

Factory Wiring Harness	-	MP Concepts
Green/Purple	-	Red
Yellow/Red	-	Blue or Gray