

SKU: 407862 / 407863

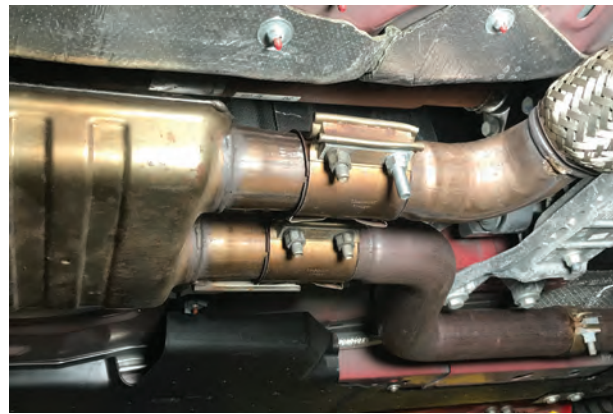
## 18+ GT Muffler Delete Axle Back Installation Guide

### Contents:

- (2) Muffler Delete Pipes
- (2) Exhaust Clamps

### Tools Required:

- 13, 15mm Wrenches/Socket
- Floor Jack & Jack Stands
- Grinder/Reciprocating Saw



### //Step 2:

Loosen the exhaust from the mid-pipe section first by loosening (4) exhaust clamp nuts using a 15mm socket.



### //Step 4:

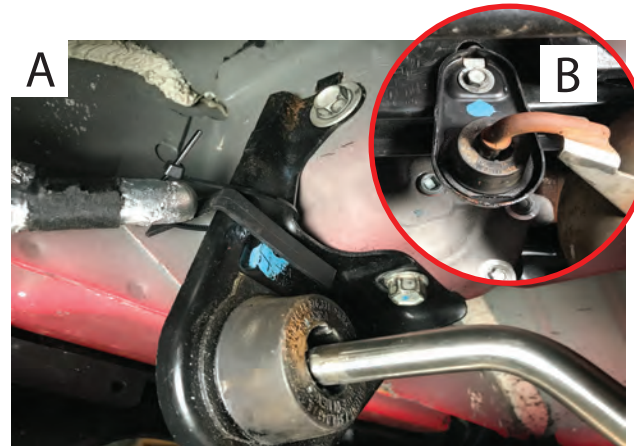
Remove the exhaust from the vehicle. Push the mid-pipe free from the catalytic converter pipes and lift slightly on the rear hangers to free them from the vehicle.

\*\*Note: This may be easier done with two people.



### // Step 1:

Begin by raising and supporting the vehicle on both sides using a floor jack and jack stands.



### //Step 3:

Once loose, move towards the rear of the vehicle and unbolt the (4) exhaust hangers. The muffer hangers [A] use (2) 13mm bolts per hanger, while the remaining pipe uses (1) 13mm bolt per hanger [B].



### //Step 5:

The muffer delete will attach to the straight portion of the factory exhaust right before the 90° bend headed into the muffer. Using a grinder/reciprocating saw, cut the exhaust pipe right before the 90 degree bend. \*\*Use eye, ear, and hand protection while cutting exhaust pipe to prevent injury.



**//Step 6:**  
Once the mufflers are cut off reinstall the mid-pipe onto the vehicle using the factory exhaust clamps and re-securing all (4) exhaust hangers into the chassis.



**//Step 8:**  
Adjust the tip location by sliding the delete pipe on or out of the factory exhaust. Additional trimming for the factory exhaust may be required. Lower the vehicle to the ground, the installation is now complete.



**//Step 7:**  
Using the muffler delete pipes, insert the delete pipe hanger into the vehicle's rubber muffer hanger [A]. Then guide the delete pipe into the mid-pipe [B] and secure using (1) provided exhaust clamp. Repeat procedure to opposite side.