

2018+ Mustang Rear Valance Diffuser Kit

Installation Instructions
P/N: 422085 (R1318-17F954),
P/N: 422125 (R1318-CF17F954)



2018+ Mustang Rear Valance Diffuser Kit

Installation Instructions

P/N: 422085 (1318-17F954),
P/N: 422125 (R1318-CF17F954)



Plastic Rear Valance Diffuser



Carbon Fiber Rear Valance Diffuser

Application: 2018 Ford Mustang GT (5.0L V8 Coyote)

Important Note: Before installing your ROUSH Rear Valance Diffuser, please read through the entire installation procedure and check to make sure all items are present. Contact ROUSH Customer Service at 1-800-59-ROUSH, 9:00 AM to 5:00 PM weekdays, for any questions regarding fit or instructions that are unclear to you.

NOTE: All illustrations in this manual are representative of the 2018+ Roush Performance Products Rear Valance Diffuser Kit.

Table of Contents

Packing List For Rear Valance Diffuser Kit..... 3

Equipment and Supplies Required..... 3

Limit Of Liability Statement 4

Safety Precautions 4

Work Safely! 4

RPP Rear Diffuser Installation Instructions 5

PACKING LIST FOR REAR VALANCE DIFFUSER KIT

Description	Part Number	Quantity
Rear Valance Diffuser Kit - Mustang GT (422085)	R1318-17F954	
Rear Diffuser Kit – Black	R1318-17F954	1
Rear Diffuser – LH	1318-17F955	1
Rear Diffuser – RH	1318-17F956	1
Rear Diffuser Hardware		
Mounting Bracket	1318-17F950	2
M4.2x16 Self-Tapping Screws	12741	6
M5x0.8x16 Bolt	98093A316	4
Double-Sided Tape	EX4015x12.5	2

Description	Part Number	Quantity
Rear Valance Diffuser Kit Carbon Fiber – Mustang GT (422125)	R1318-CF17F954	
Rear Diffuser Kit – Carbon Fiber (Optional)	R1318-CF17F954	1
Rear Diffuser – LH – Carbon Fiber	1318-CF17F955	1
Rear Diffuser – RH – Carbon Fiber	1318-CF17F956	1
Rear Diffuser Hardware		
Mounting Bracket	1318-17F950	2
M4.2x16 Self-Tapping Screws	12741	6
M5x0.8x16 Bolt	98093A316	4
Double-Sided Tape	EX4015x12.5	2

EQUIPMENT AND SUPPLIES REQUIRED

- 1/4" Drive Ratchet
- 1/4" Drive Extension 3"
- 7 mm Socket
- 8 mm Socket
- Electric Hand Drill
- 1/4" Drill Bit
- 1/8" Drill Bit
- Spray bottle of soapy water
- Rag or paper towel

If you are missing any items, please call us toll free at 1-800-59-ROUSH.

LIMIT OF LIABILITY STATEMENT

The information contained in this publication was accurate and in effect at the time the publication was approved for printing and is subject to change without notice or liability. ROUSH Performance Products (RPP) reserves the right to revise the information presented herein or to discontinue the production of parts described at any time.

SAFETY PRECAUTIONS



CAREFULLY READ THE IMPORTANT SAFETY PRECAUTIONS and WARNINGS BEFORE PROCEEDING WITH THE INSTALLATION!

Appropriate disassembly, assembly methods and procedures are essential to ensure the personal safety of the individual performing the kit installation. Improper installation due to the failure to correctly follow these instructions could cause personal injury or death. Read each step of the installation manual carefully before starting the installation.

- Always wear safety glasses for eye protection.
- Place ignition switch in the OFF position.
- Always apply the parking brake when working on a vehicle.
- Block the front and rear tire surface to prevent unexpected vehicle movement.
- If working with a lift, always consult vehicle manual for correct lifting specifications.
- Operate the engine only in well-ventilated areas to avoid exposure to carbon monoxide.
- Do not smoke or use flammable items near or around the fuel system.
- Use chemicals and cleaners in well-ventilated areas.
- Batteries produce explosive gases, which can cause personal injury. Therefore, do not allow flames, sparks or flammable substances to come near the battery.
- Keep hands and any other objects away from the radiator fan blades.
- Keep yourself and your clothing away from moving parts when the engine is running.
- Do not wear loose clothing or jewelry that can get caught in rotating parts or scratch surface finishes.
- Allow the engine, cooling system, brakes and exhaust to cool before working on a vehicle.

WORK SAFELY!

Perform this installation on a good clean level surface for maximum safety and with the engine turned off.

! WARNING

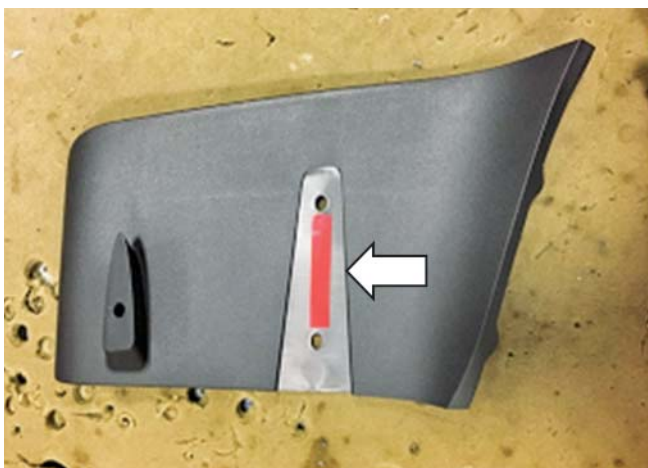
Use extreme caution during installation. Torque all fasteners according to manufacturer's torque values and tightening sequence. DO NOT use air impact tools to tighten fasteners on ROUSH Performance Products Systems.

RPP REAR DIFFUSER INSTALLATION INSTRUCTIONS

1. Clean OEM rear fascia in the circled areas below with soapy water and shop rag. Repeat on opposite side.



2. Place double-sided tape (PN: EX4015x12.5) centered between the screw holes on RH and LH diffusers (PN: 1318-17F956 and 1318-17F955) or for carbon fiber (PN: 1318-CF17F956 and 1318-CF17F955).



3. Peel off the tape backing and position the diffuser on the vehicle. Note the non-textured area will contour with the factory rear fascia. Align the edge of the diffuser as desired with the rear valance below the reverse lamp. Repeat on opposite side.



4. Drill two (2) 1/4" holes into the OEM rear fascia using the holes in the diffuser as guides. Make sure to hold the diffuser with the other hand while drilling to ensure the holes align properly. Repeat on opposite side.



5. Place bracket (PN: 1318-17F950) inside the OEM rear fascia and align threads with the holes. Repeat on opposite side.



7. Drill two (2) 1/8" pilot holes using the dimples in the diffuser as locators. Be sure to hold the diffuser with your other hand to prevent the drill bit from walking or the diffuser from moving. Repeat on opposite side.



6. Hold the bracket with one hand and hand start the two (2) M5 bolts (PN: 98093A316). Tighten the bolts with a wrench using an 8 mm socket. Torque to 5 Nm. Repeat on opposite side.



2018+ Mustang Rear Valance Diffuser Kit



8. Fasten with two (2) M4.2 self-tapping screws (PN: 12741) and lightly tighten with a wrench using a 7 mm socket.



9. With a 1/8" drill bit, drill a pilot hole for the mounting location on the support of the diffuser. Repeat on opposite side.



10. Fasten with one (1) M4.2 self-tapping screw (PN: 12741) using a 7 mm socket. Repeat on opposite side.



11. Torque the three (3) self-tapping M4.2 screws to 2 Nm (hand tight).

Congratulations!!! You have completed the installation of the ROUSH Performance Products, Ford Mustang Rear Valance Diffuser Kit.