



**2005-2014 Mustang Rocker Splitters
CDC# 0511-7007-01**



Note: READ instructions before starting installation!!!

Kit Components:

- 1 – Driver side Rocker Splitter
- 1 – Passenger side Rocker Splitter
- 1 – Hardware Kit
 - 18 – Push Pin
 - 2 – Push Pins
 - 2 – Packs of Isopropyl Alcohol
 - 2 – Packs of 3M Adhesion Promoter
 - 1 - 154" Roll 3M Tape Roll
 - 1 – Installation Instructions

CDC Part#

- 0511-2403-01**
- 0511-2404-01**
- 0511-6511-01**
- 65003
- 116020
- 950006
- 950007
- 950023

Tools Required:

- Drill Motor
- Scissors
- ¼" Drill
- Masking Tape
- Jack and Jack Stands (optional)
- Center Punch

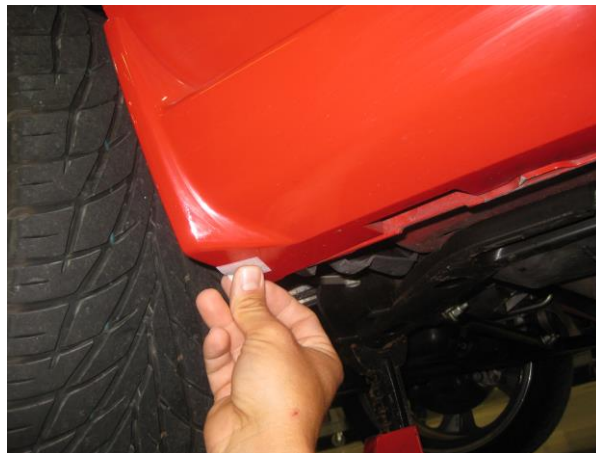
Installation Procedure for 2005-2009:

GO TO PAGE 6 FOR 2010-2014

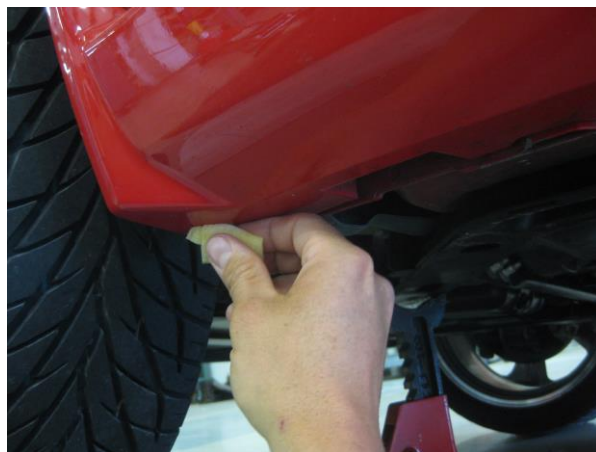
1. This step is optional. If you choose to raise your car, do one side at a time. Use necessary safety precautions, failure to do so could result in serious injury or death.



2. Clean the bottom side of the Rocker Panel with the supplied Isopropyl Alcohol Pad. **NOTE:** You may need to first use a damp cloth to clean the Rocker Panel if it is excessively dirty. Make sure it's dry before using the Alcohol Pad.



3. Apply the supplied Adhesion Promoter to bottom side of the Rocker Panel. Allow sufficient time to dry.



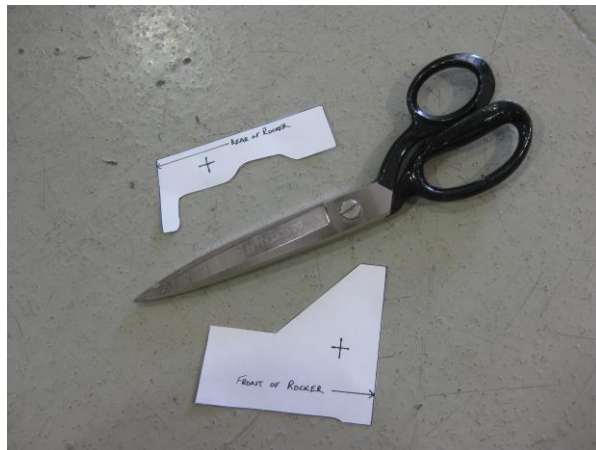
4. Apply the 3M tape as shown below. **NOTE:** Apply the tape approximately 1/16" inboard of the corner of the Rocker Panel.



5. Apply Adhesion Promoter to Splitter as shown in pic. **NOTE:** Apply Promoter where tape will contact the Splitter.



6. Find the 2 templates located in the back of the instructions and cut them out as shown.



CD4II3DI

7. Align template as shown at rear of Rocker. Mark the Rocker with a center punch.



8. Align template as shown at front of Rocker. Mark the Rocker with a center punch.



9. Drill both front and rear locations with 1/4" drill. **NOTE:** If you did not jack the car up, you will need a right angle, or 90 degree drill. It's ok if you drill through the 3M tape.



CD4II3DI

10. Peel about 3" of the red backing and temporarily tape with masking tape as shown, at front and rear of Rocker.



11. Insert 1 of the included push pin fasteners (CDC# 65003) through the most rearward hole in the Splitter and into the hole previously drilled in the Rocker. Do the same at the front of the Rocker.



12. Peel the remaining red backing while firmly pressing the Splitter up to the bottom of the Rocker.



CD4II3DI

13. Using the Splitter as a drill guide, drill the remaining ¼” holes and install push pins.

NOTE: There are 2 large diameter push pins that are not used for 2005-2009 installation. Repeat the process on the opposite side of the car.



Installation Instructions for 2010-2014:

1. Clean the bottom side of the Rocker Panel with the supplied Isopropyl Alcohol Pad.

NOTE: You may need to first use a damp cloth to clean the Rocker Panel if it is excessively dirty. Make sure it's dry before using the Alcohol Pad.



2. Apply Adhesion Promoter to the bottom side of the Rocker as shown. Allow sufficient time to dry.



CD4II3DI

3. Apply 3M tape to bottom side of Rocker. **NOTE:** Use the rectangle cutouts in the bottom of the Rocker as a guide to place the 3M tape.

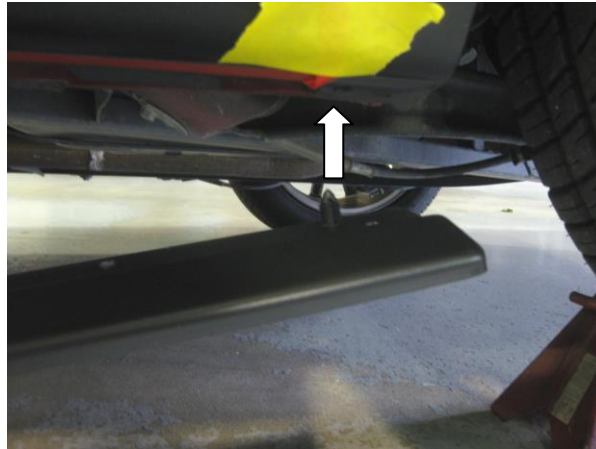


4. Apply Adhesion Promoter to Splitter as shown in pic. **NOTE:** Apply Promoter where tape will contact the Splitter.

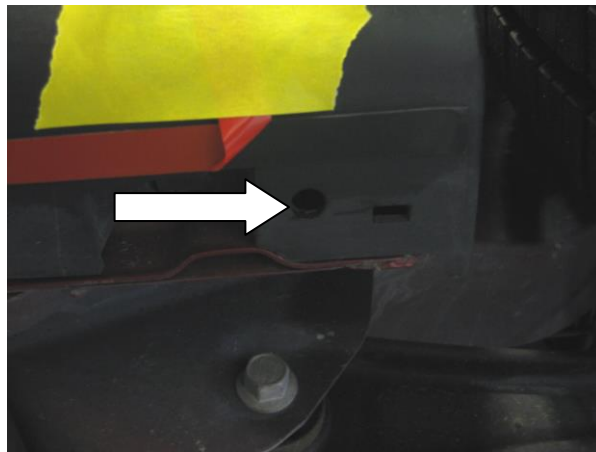


CD4II3DI

5. Locate 1 of the 2 larger diameter push pins (CDC# 116020) from the hardware package and insert through larger hole in rear of Splitter. Peel about 3" of the red backing and temporarily tape with masking tape as shown, at front and rear of Rocker.



6. Use the hole in the pic to help locate the Splitter in the correct location.



7. This step is easier with the help of a friend. Hold up the front of the Splitter so that the inside radius fits the Rocker well, and looks parallel to the Rocker. Peel the red backing and press the Splitter firmly into position against the bottom of the Rocker. **Caution:** If your car is on jack stands, use extreme caution.



CD4II3DI

8. Using the Splitter as a drill guide, drill the remaining 1/4" holes and install push pins. Repeat the process on the opposite side of the car.

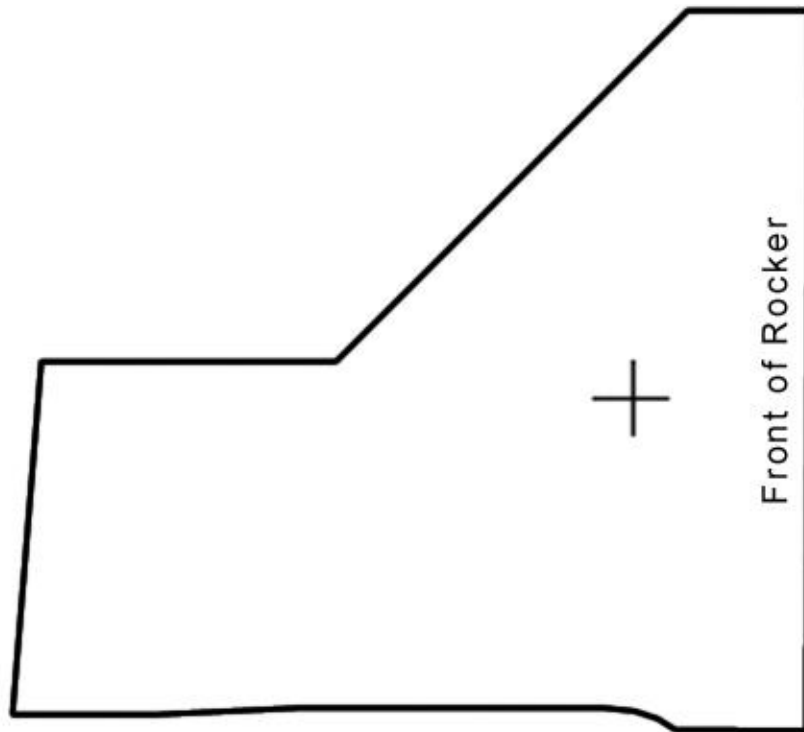


Thank you for choosing Classic Design Concepts for your restyling needs. If you have any questions or concerns regarding installation please contact Tech@CDCdetroit.com or call 866-624-7997.

CD4II3DI

Notes:

Use for 2005-2009 Mustang Only



CD4II3DI

Intentionally Blank Page

Use for 2005-2009 Mustang Only

