

## ROUSH Wheel Hop Reduction Kit

Part # R06030084

Application: 2005-09 Ford Mustang

### Installation Instructions

Before installing your ROUSH Performance Product(s), read through the entire installation procedure and check to make sure all items are present. Contact ROUSH Customer Service at 1-800-59-ROUSH, 9:00 AM to 5:00 PM weekdays, for any questions regarding fit or instructions that are unclear to you.

#### Packaging List for ROUSH Anti-Wheel Hop Kit

Description	ROUSH Part Number	Quantity
<b>ROUSH Anti-Wheel Hop Kit</b>	<b>R06030084</b>	<b>1</b>
Bracket Assembly - Preassembled to Std Ride Height		
Upper Trailing Arm	R06030063	1
Upper Trailing Arm Bracket	R06030064	1
Bolt – M14 x 120	R18020015	1
Nut M14	R18010004	1
Hardware Kit	R06030072/73	
Bolt – M12 x 30	R18020013	2
Bolt – M14 x 45	R18020014	1
Bolt – M14 x 120	R18020015	1
Nut M14	R18010004	1



## **LIMIT OF LIABILITY STATEMENT**

The information contained in this publication was accurate and in effect at the time the publication was approved for printing and is subject to change without notice or liability. ROUSH Performance Products (RPP) reserves the right to revise the information presented herein or to discontinue the production of parts described at any time.

## **SAFETY REQUIREMENTS**

**STOP! READ IMPORTANT SAFETY CAUTIONS AND WARNINGS BEFORE PROCEEDING.**

### **IMPORTANT SAFETY NOTICE**

Appropriate disassembly, assembly methods and procedures are essential to ensure the personal safety of the individual performing the kit installation. Improper installation due to the failure to correctly follow these instructions could cause personal injury or death. Read each step of the installation manual carefully before starting the actual installation.

1. Always wear safety glasses for eye protection.
2. Place ignition switch in the OFF position.
3. Always apply the parking brake when working on a vehicle.
4. Block the front and rear tire surface to prevent unexpected vehicle movement.
5. If working without a lift, always consult vehicle manual for correct lifting specifications.
6. Operate the engine only in well-ventilated areas to avoid exposure to carbon monoxide.
7. Do not smoke or use flammable items near or around the fuel system.
8. Use chemicals and cleaners in well-ventilated areas.
9. Batteries produce explosive gases, which can cause personal injury. Therefore, do not allow flames, sparks or flammable substances to come near the battery.
10. Keeps hands and any other objects away from the radiator fan blades.
11. Keep yourself and your clothing away from moving parts when the engine is running.
12. Do not wear loose clothing or jewelry that can get caught in rotating parts or scratch surface finishes.
13. Allow the engine, cooling system, brakes and exhaust to cool before working on a vehicle.

### **WORK SAFELY!**

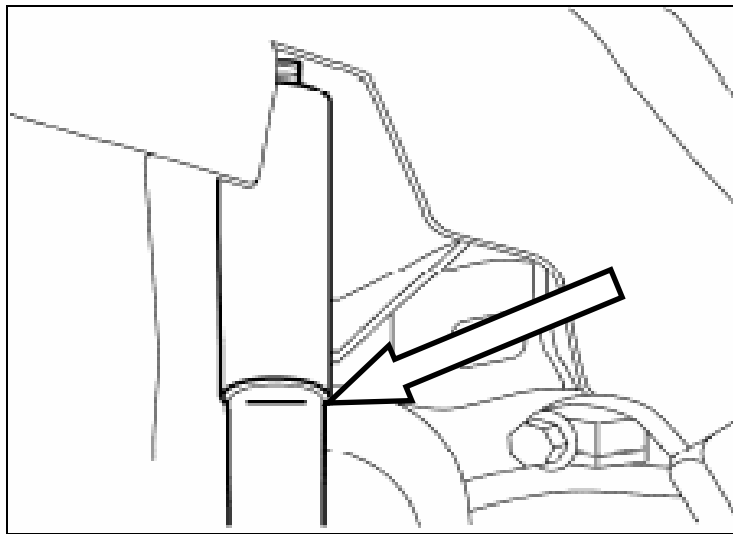
Perform this installation on a good clean level surface for maximum safety and with the engine turned off.

## Tools Required:

- 18mm and 21 mm sockets and matching drives (1/2" drive suggested)
- Torque Wrench with 75 to 200 Nm (50 to 150 lb-ft) capacity

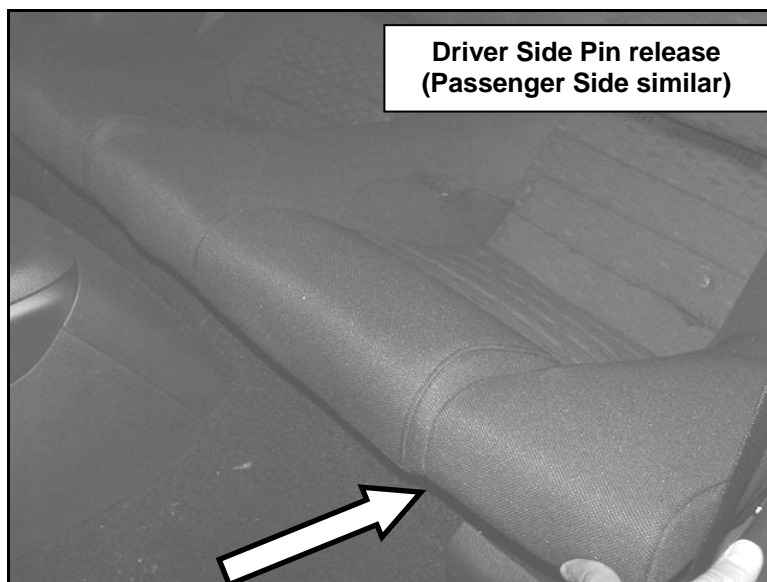
## Disassembly

1. With the vehicle on level ground and at normal ride height, place a mark on both rear shocks where the dust boot meets the body of the shock.

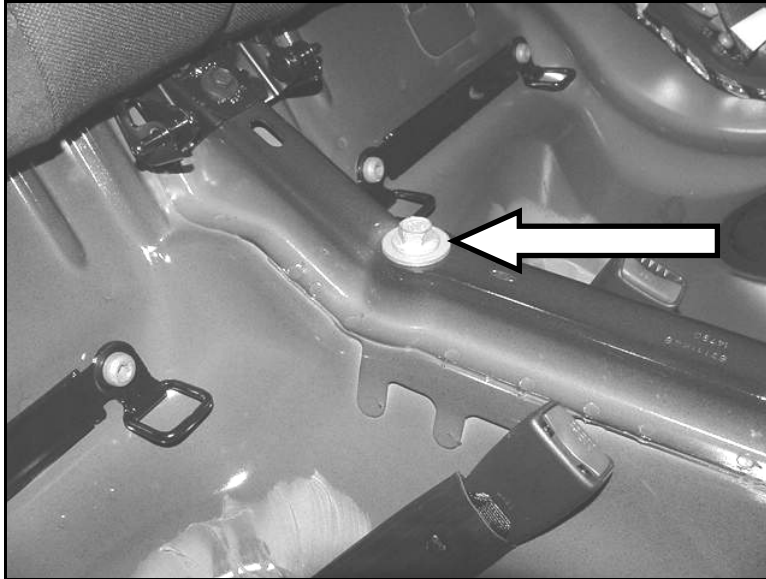


## Remove the Rear Upper Trailing Arm

2. Remove the rear seat by pushing on the pin releases at the driver and passenger sides.



3. Remove the center bridge bolt from the center of the back seat area and discard.

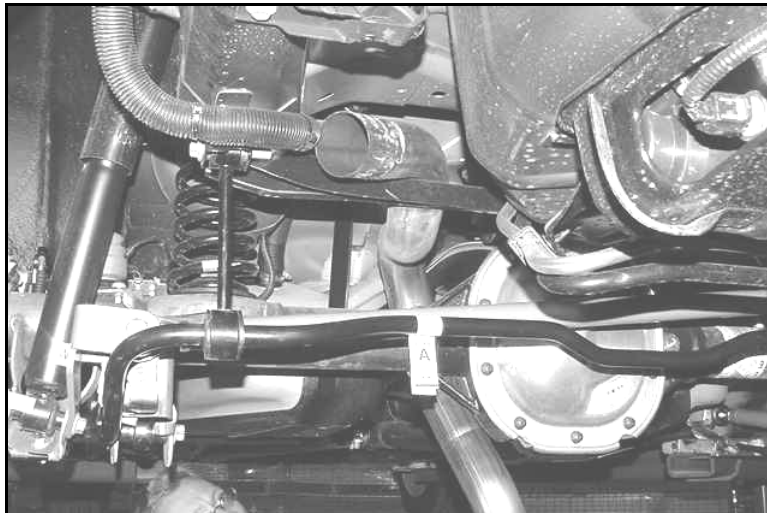


## Raise Vehicle

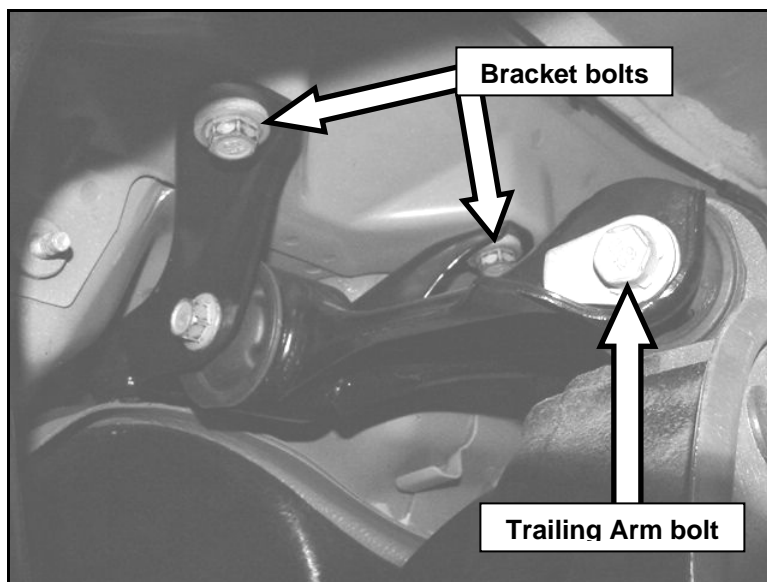
4. Locate a level, stable and clean surface, suitable for supporting the vehicle on jack-stands.
5. Chock front wheels.
6. Refer to the Owner's Manual to identify the correct location of the jack for raising the vehicle. Jack up the vehicle, and secure it on a pair of jack stands to the frame (not the rear axle), again referring to the Owner's Manual for jack location points.

**Warning:** Never leave any vehicle supported by only a jack. Always use jack-stands. Serious injury and/or death may result.

7. Remove the rear half of the exhaust for better access to the rear upper trailing arm bolts. (Recommended but not mandatory)



8. Place a jack under the center section of the rear axle to secure and position the axle while you continue to install the kit.
9. Completely remove the two upper trailing arm bracket to floor bolts and the rearward trailing arm to axle housing bolt. Discard these bolts.



10. Place a jack under the fuel tank to hold it in position and remove the driver side tank strap bolt. Loosen the passenger side tank strap bolt by approximately 10 turns.
11. Use the jack to slightly lower the gas tank in order to slide out the bracket and arm assembly.

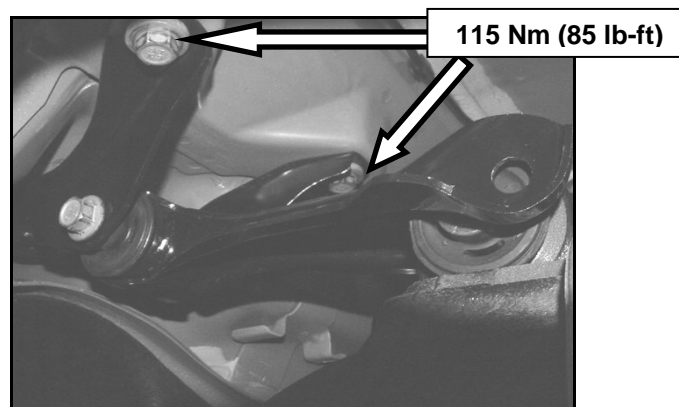


## Assembly

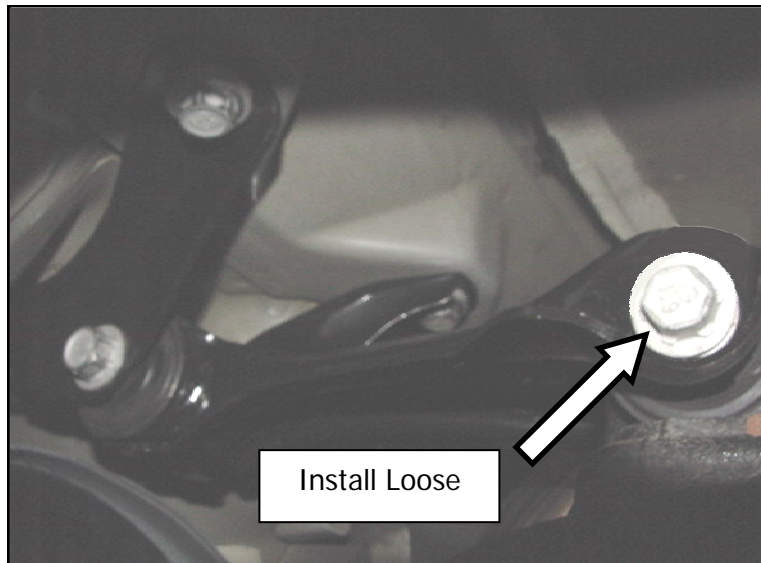
**Important Notice:** As packaged, the Bracket and Upper Trailing Arm are preassembled in the required position to function properly on a stock ride height Mustang GT. If the vehicle ride height has been altered, it will be necessary to loosen the forward bushing bolt and retorque the assembly with the components in the vehicle and the axle positioned at the intended ride height (neutralized). Failure to do this will result in dramatically shortened bushing life and probable increased wheel hop.

### Install the Rear Upper Trailing Arm and Bracket

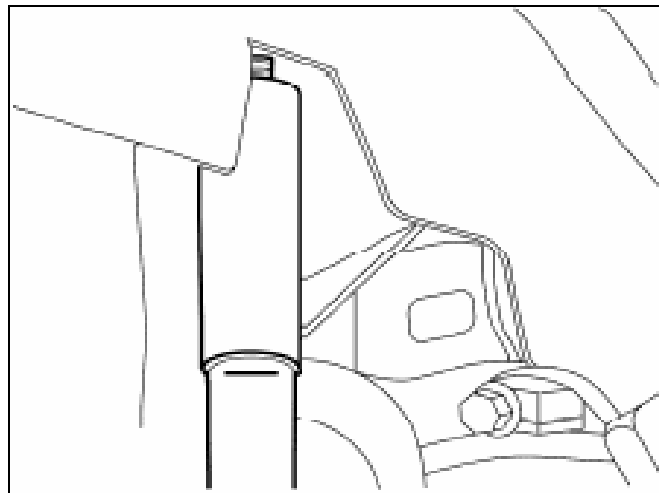
1. Slide the rear upper trailing arm and bracket into position and install the supplied M12 x 30mm bolts and torque down to 115 Nm (85 lb-ft).



2. Install the supplied M14 x 120mm bolt through the trailing arm and the axle bushing and loosely install the nut.

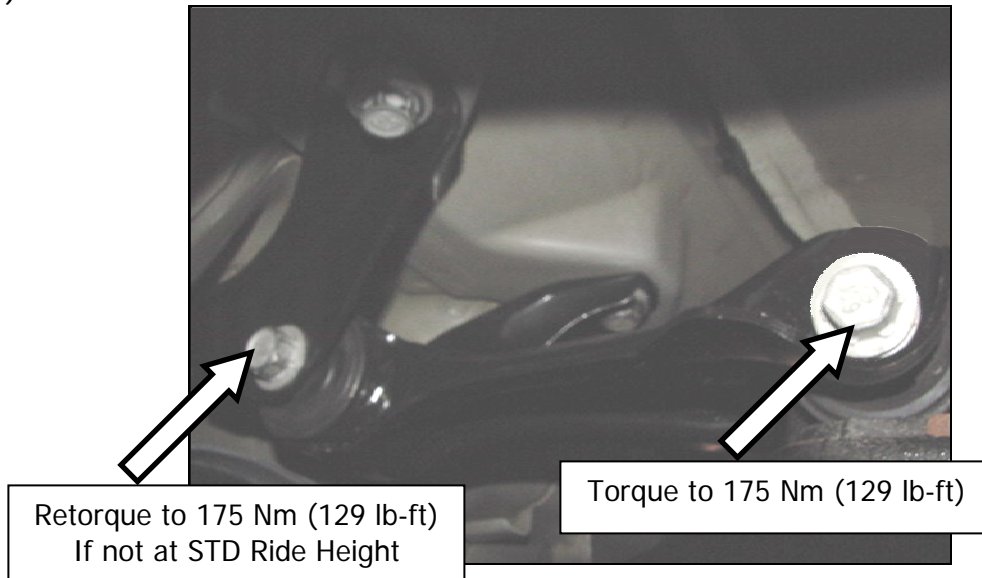


3. Raise the axle to the normal ride height as previously marked on the shocks.

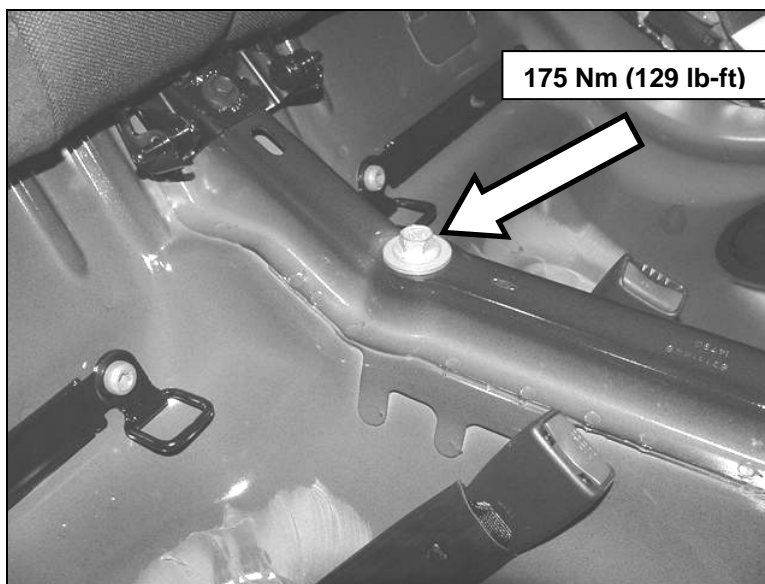




- Torque the rearward upper trailing arm bolt to 175 Nm (129 lb-ft). If the vehicle is at a non-stock ride height loosen and retorque the forward bushing bolt to 175 Nm (129 lb-ft).



- Install the supplied M14 x 45mm (interior) bridge bolt and torque to 175 Nm (129 lb-ft).



- Re-install exhaust if removed.
- Re-install the rear seat.
- Lower the vehicle.
- Take out for a test drive and check for unusual noises. If irregularities occur, check install to ensure everything was done as described in these instructions.





**Congratulations!!!** You have completed the installation of the ROUSH Performance Products, Wheel Hop Reduction Kit. It is recommended that you save all parts removed from your vehicle during the installation of this kit.

## **WARRANTY**

All retail parts carry a 90-day warranty from the date of purchase. This warranty covers defects in materials or workmanship, and does not include (i) normal wear and tear, environmental conditions, improper installation; (ii) road hazards, misuse, abuse, neglect, accidents, collision, fire, theft, freezing, vandalism, riot, explosion, or objects striking the vehicle; (iii) misusing the vehicle, such as driving over curbs, overloading, racing, or using the vehicle as a stationary power source; (iv) altering, disassembling or modifying the parts; (v) defects caused or induced by failures, breakdowns, or damage by other parts, components or the vehicle; (vi) subjecting the parts to excessive moisture or water or any motor vehicle fluids (e.g.: oil, anti-freeze, battery acid, brake fluid, etc.); (vii) acts of God, natural disasters and other similar causes beyond the reasonable control of ROUSH; or (viii) application of chemicals that affect the parts. This Limited Warranty does not cover surface deterioration of paint, trim, and appearance items that result from use and/or exposure to the elements, such as stone chips, scratches, bird droppings, lightning, hail, windstorm, dings, dents, earthquake, road salt, tree sap, water or flood.

ROUSH SHALL NOT BE LIABLE TO REIMBURSE CUSTOMER/DEALER FOR INCIDENTAL OR CONSEQUENTIAL DAMAGES RESULTING FROM THE INSTALLATION OR USE OF ANY PRODUCT SOLD THROUGH THIS CATALOG OR ARISING OUT OF ANY BREACH OF WARRANTY. EXCEPT AS MAY BE STATED IN THIS CATALOG, ROUSH DISCLAIMS ALL EXPRESS AND IMPLIED WARRANTIES, INCLUDING THE WARRANTIES OF MERCHANTABILITY AND FITNESS FOR A PARTICULAR PURPOSE. IN NO EVENT SHALL ROUSH'S LIABILITY EXCEED THE PRICE PAID BY CUSTOMER/DEALER FOR PRODUCTS SOLD REGARDLESS IF ROUSH HAS BEEN ADVISED IN ADVANCE OF ANY POTENTIAL PROBLEM OR IF A CLAIM IS BASED ON CONTRACT, TORT, STRICT LIABILITY, PRODUCT LIABILITY OR OTHERWISE. SOME STATES DO NOT ALLOW THE EXCLUSION OR LIMITATION OF IMPLIED WARRANTIES OR THEIR DURATION, OR LIABILITY FOR INCIDENTAL OR CONSEQUENTIAL DAMAGES, SO THE ABOVE EXCLUSIONS OR LIMITATIONS MAY NOT APPLY.