

LONG TUBE

H E A D E R S

Long Tube Headers
6800 Mid Cities Ave.
Beltsville, MD 20705

www.longtubeheaders.com

MUSTANG GT 5.0 RESONATOR DELETE

MATERIALS INCLUDED:

- (1) LTH™ Instruction Booklet
- (1) LTH™ Sticker
- (1) LTH™ Informational Postcard
- (1) LTH™ Resonator Delete X-Pipe
- (2) 2.5" Exhaust Band Clamps



NOTE: Please check for these materials before installing this product. If any of the above listed materials are missing from your package, please contact LTH™ before attempting to install the product at: info@longtubeheaders.com or 301-602-0873.



WARNING

This document and the images within it are the copyrighted intellectual property of Long Tube Headers, Inc. They may not be reproduced or distributed in anyway, including electronic duplication and publication, without the express written consent of Long Tube Headers, Inc. By installing this product the end user is agreeing to hold Long Tube Headers, Inc., its staff, and business associates (hereto referred as LTH™) harmless from any and all damages that may result, both directly and/or indirectly, from the use and or installation of this product. LTH™ will not be held responsible for any damages whatsoever. This is a performance enhancing product, and it is understood that the user is aware of, and liable for, any damages that result from the use and/or misuse of this product.

PROCEDURE OVERVIEW:

I. PLEASE READ DIRECTIONS ONE TIME COMPLETELY BEFORE INSTALLING. *(This is an overview of the installation.)*

NOTE: *This product should be installed by, or under the supervision of, a qualified performance automotive specialist. Failure to do so may result in major property damage, serious injury, and or death. Be sure to exercise caution when driving your vehicle. Safety must be your primary concern! Always obey posted traffic laws and limits. Drive within the limits of the law, the limits of safety, and the limits of your ability.*

II. ACQUIRE NECESSARY INSTALLATION TOOLS

NOTE: *Not all tools listed will be absolutely necessary; however, for the best and easiest installation recommended tools may be listed.*

III. INSTALL LTH™ Mustang GT 5.0 Muffler Delete

- *****DISCONNECT THE NEGATIVE BATTERY CABLE BEFORE BEGINNING INSTALLATION*****
The car battery stores a tremendous amount of energy and must be treated with respect. Disconnect the NEGATIVE, BLACK, wire from the car's battery. Be extremely careful NOT to short the battery with your tools while removing the negative cable. Shorting the battery by touching the terminal will almost certainly cause severe burns, a fire, or even an explosion. FYI, the reason to remove the negative terminal of the battery is so that if the wrench were to slip while on the nut of the battery terminal, and accidentally contact the frame of the car (ground) the result would not be a short from positive to ground, but a much less harmful short from negative-to-negative. Be careful to not slip and hit anything.
- Uninstall the stock Mustang GT 5.0 resonator.
 - Install the LTH™ Mustang GT 5.0 resonator delete x-pipe.

IV. START VEHICLE

Instructions for:
Ford Mustang GT 5.0 Resonator Delete
'15 -

II. TOOLS NEEDED FOR INSTALLATION:

- (1) Ratchet (3/8" or 1/4")
- (1) 13mm Socket
- (1) 15mm Socket
- (1) Plasma Cutter/Band Saw/Sawzall
- (1) Second Set of Hands*
- (1) Exhaust Hanger Pliers*
- (1) Penetrating Oil*
- (1) WD-40*
- (2) Jack Stands*
- (1) Hydraulic Jack*

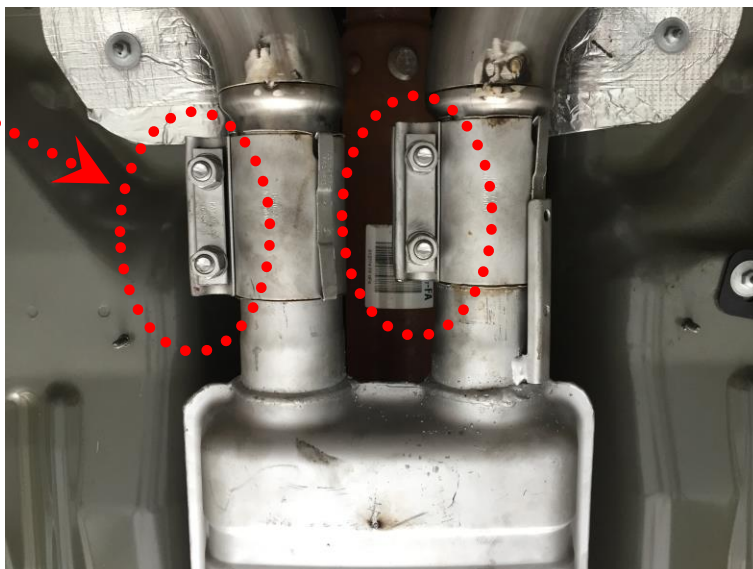
**Indicates that these tools are optional and are not needed to install the LTH™ Resonator Delete depending on the installer's preference.*

III. INSTALL LTH™ Mustang GT 5.0 Resonator Delete

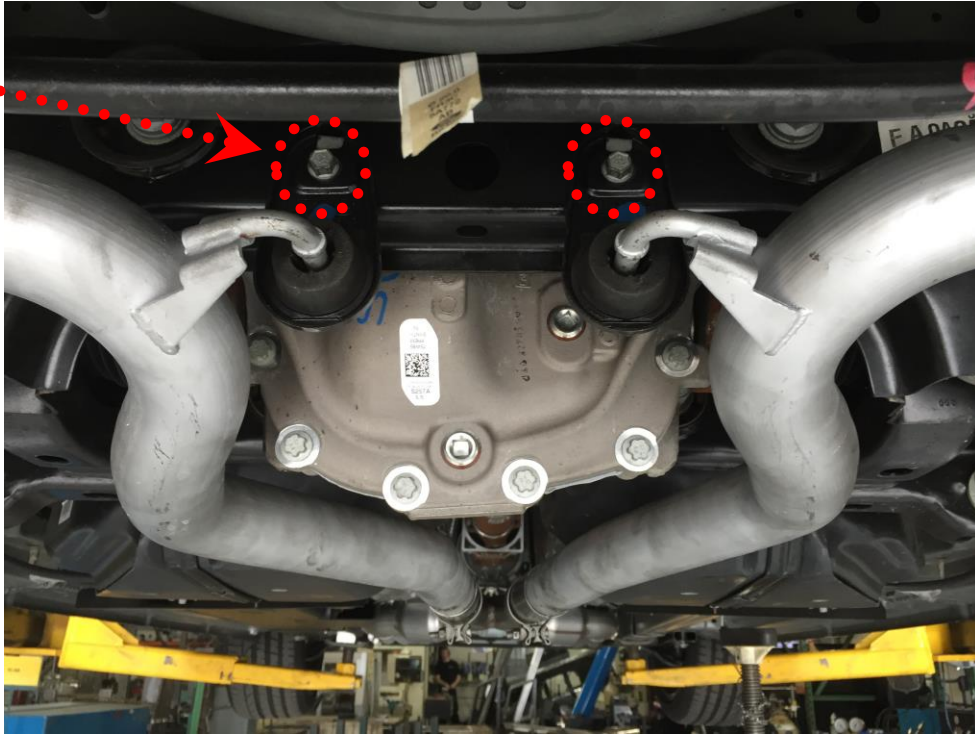
- ***DISCONNECT THE NEGATIVE BATTERY CABLE BEFORE BEGINNING INSTALLATION*****

The car battery stores a tremendous amount of energy and must be treated with respect. Disconnect the **NEGATIVE, BLACK,** wire from the car's battery. Be extremely careful **NOT** to short the battery with your tools while removing the negative cable. Shorting the battery by touching the terminal will almost certainly cause severe burns, a fire, or even an explosion. FYI, the reason to remove the negative terminal of the battery is so that if the wrench were to slip while on the nut of the battery terminal, and accidentally contact the frame of the car (ground) the result would not be a short from positive to ground, but a much less harmful short from negative-to-negative. Be careful to not slip and hit anything.

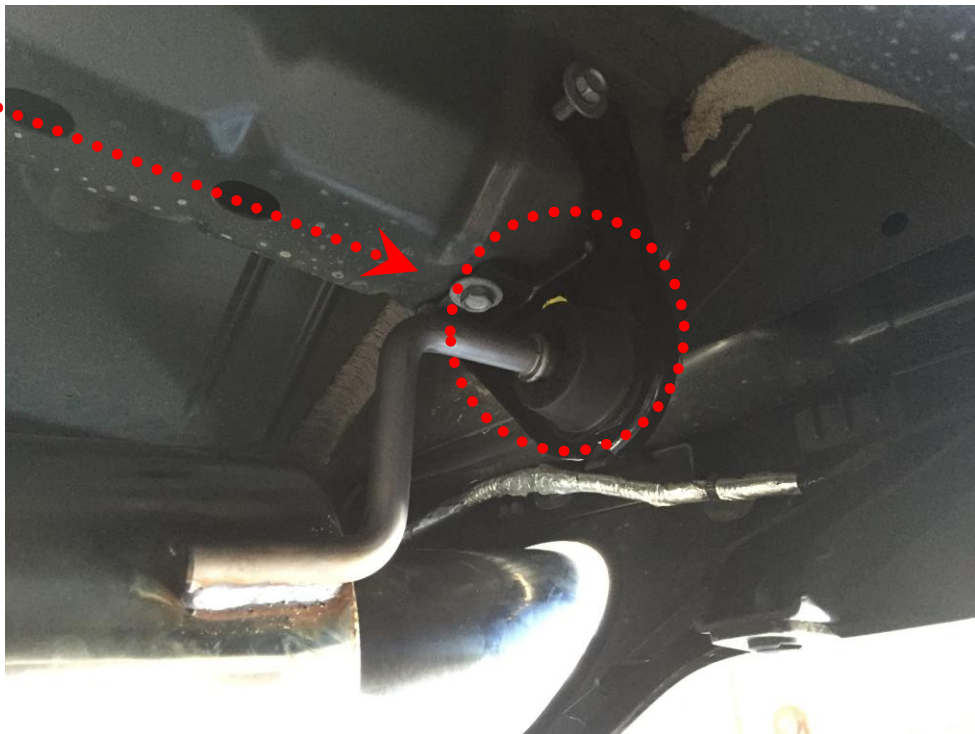
- Lift the vehicle and set it safely onto jackstands.
- In order to install the LTH™ Resonator Delete X-Pipe, we will first need to remove the full factory cat-back exhaust section in order to be able to cut the exhaust in the correct position for the LTH™ Resonator Delete section. Start by loosening the two factory exhaust clamps at the inlet to the factory resonator. Use a 15mm socket to loosen the two nuts on each clamp.



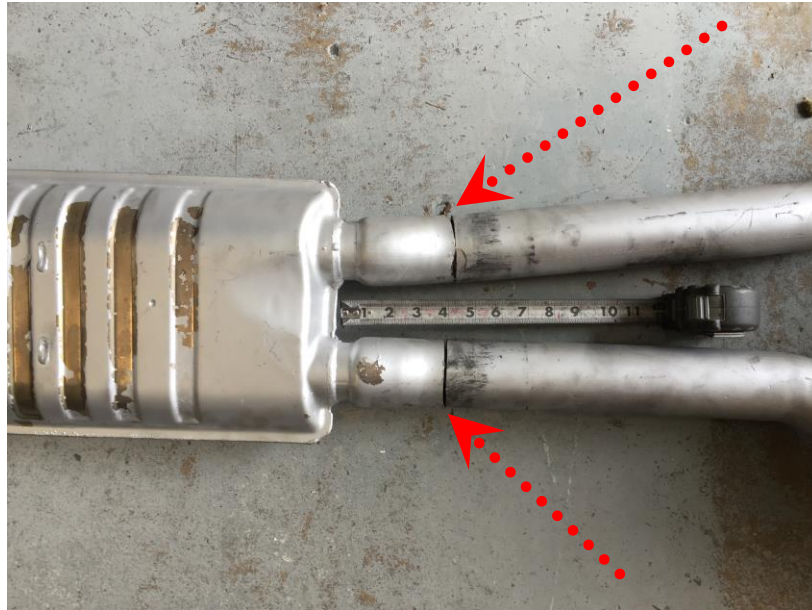
- Next, unbolt the exhaust hangers near the rear differential that are supported on the rear sub-frame. Use a 13mm socket to loosen and remove the bolts. Once the bolts are removed, the hangers will still be supported by a metal tab, but use caution since the pipes are no longer fully secured.



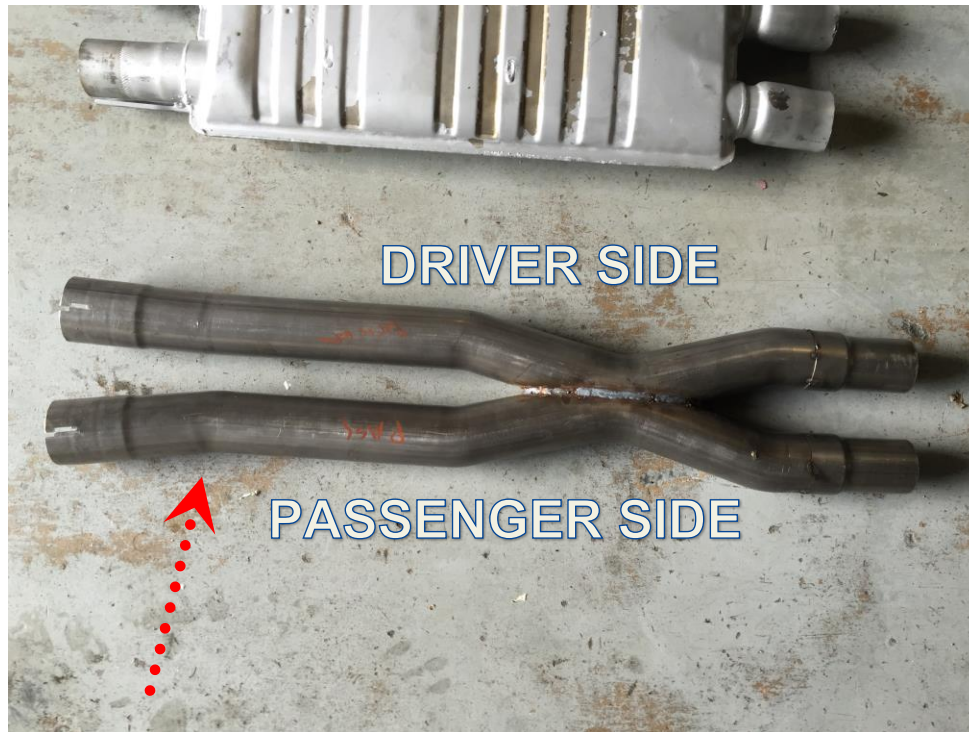
- Finally, use a pair of exhaust hanger pliers to remove each of the rear tips from the exhaust hangers by the rear valence. You may want a second set of hands for this step. Once they are removed, you will want to pull the entire rear section of the exhaust from the resonator backwards and then drop everything down.



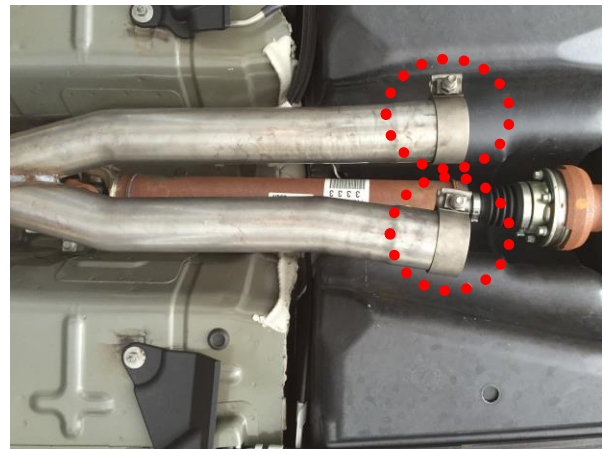
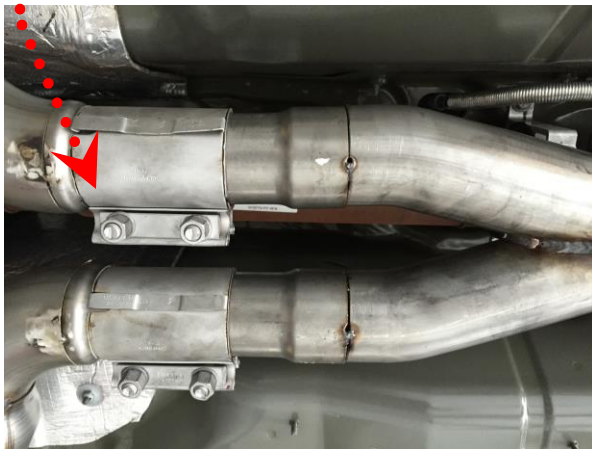
- At this point, the entire rear section of the factory exhaust should be removed from the vehicle. With the exhaust on the ground, we will now make a cut just rearward of the factory resonator. As shown below, measure and mark the exhaust approximately **four inches** from the body of the factory resonator (measuring from the resonator toward the mufflers). Properly secure the exhaust and, using a Sawzall or similarly capable tool, cut each section of the exhaust where you marked.



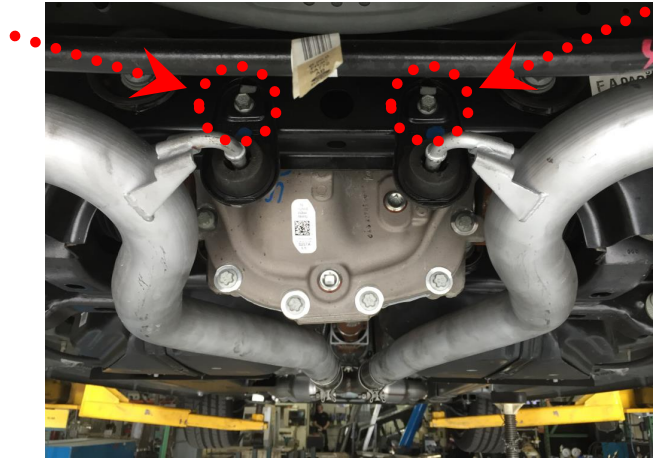
- We can now begin the installation of the LTH™ resonator delete x-pipe. The x-pipe is not symmetrical and will need to be installed in a specific orientation to mate up properly with the factory pipe where you made your cut. The leg with the sharper bend near the outlets mates up with the passenger side piping, as shown.



- Once oriented properly, raise the LTH™ x-pipe section up the vehicle and slide the reducer sections into the factory piping, reusing the factory clamps. On the opposite end, be sure to slide the two supplied 2.50" exhaust band clamps over the pipes.



- We will now re-install the left-over rear section of the exhaust from where you made the cut after the factory resonator. Slide the pipes into the outlets of the LTH™ x-pipe. The hangers from the rear subframe should still be attached to the exhaust, so simply bolt the upper portion of the hanger back into the sub-frame reusing the stock hardware.



- Finally, reinstall the rear mufflers into the exhaust hangers by the rear valence. Once everything has been fully supported, adjust the position of the tips in the rear valence if necessary, and then fully tighten the 2.50" exhaust band clamps and the factory clamps at the front.



IV. START THE VEHICLE & TAKE OFF!

NOTE: It is highly recommended that the user double checks the torque on all the bolts after driving around for a little bit. The exhaust may fit itself in better after a little engine movement and heat cycles, causing the bolts to be a little looser. It is probable that new exhaust may produce more than normal amounts of smoke for the first couple of drives. Chemicals on and in the exhaust will burn off. This will not affect performance or longevity of the product. It is a good idea to wipe off and clean the exhaust while cleaning up. Any finger prints on the exhaust will heat up and stain the exhaust permanently. This will not affect performance or longevity, and is not required.

*** WARNING***

Please be careful when first driving with the addition of the LTH™ Mustang GT 5.0 Resonator Delete. The vehicle's driving characteristics will be different. The change in vehicle power and performance may take the inexperienced driver by surprise. The user must be careful, and above all, obey all posted speed limits, laws, and regulations.

LTH™ Mustang GT 5.0 Resonator Delete