



Special Tools

Required:

- Saws-all

Install Time:

Approximately
1 Hour 30 min

Difficulty:

3 out of 5

Follow these instructions carefully to ensure correct fitment and operation.

STEP 1

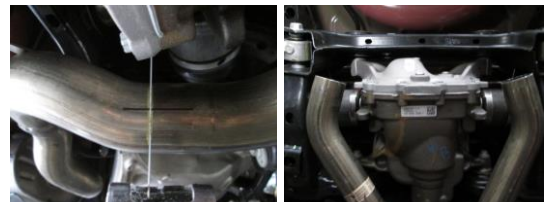
- Lift the vehicle as high as possible utilizing approved jack stands or preferably a vehicle hoist.

STEP 2



- Mark the exhaust pipes in line with the rear differential cover plate. Make sure to mark a straight line with the angle of the exhaust pipe.

STEP 3



- Using a saws-all cut the stock exhaust along the marked lines. When both passenger and driver side are cut your end result should look like the picture on the right.

STEP 4



- Remove the 2 bolts that secure the exhaust mount to the chassis located by the muffler tip. Next remove the bolt on the exhaust hanger that is located by the rear differential cross member. Once all 3 bolts are removed lift up on the exhaust and unhook the mounts from the chassis and remove the stock axle back from the vehicle.



Join our Facebook page
www.facebook.com/bbkperformance



Follow us on Twitter
[@bbkperformance](https://twitter.com/bbkperformance)



Check us out on Youtube
www.youtube.com/bbkperformance

GO TO NEXT PAGE

WWW.BBKPERFORMANCE.COM

For any questions, email us:
tech@bbkperformance.com

installation instructions

1

IMPORTANT: All appropriate safety equipment and gear must be used during the installation of this or any BBK Performance products or any time you work on a vehicle. BBK Performance Inc. accepts no responsibility for injuries or damage caused by or during the installation of this product.

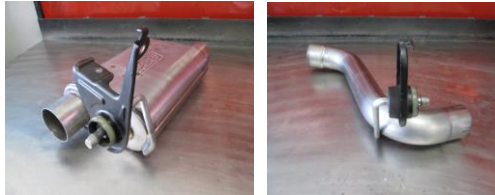
2015 Ford Mustang GT 5.0L V8

Axle Back System

Part # 41115



STEP 5



- Working on the driver side, Remove the rubber exhaust mounts from the stock exhaust and install them accordingly to the BBK Axle Back System.

STEP 6



- Slide the 2 1/2" band clamp and the BBK Axle Back tube over the stock exhaust pipe. Lift upward on the axle back tube and hook the exhaust hanger to the chassis.

STEP 7



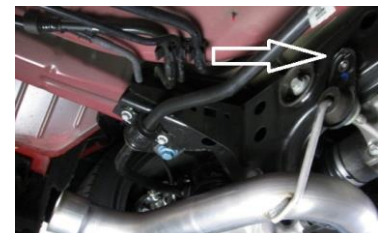
- Slide the 3" band clamp and the BBK Vari-Tune Muffler onto the axle back tube. Lift upward on the muffler and hook the exhaust hanger to the chassis, reinstall the exhaust mount bolts and tighten them down.

STEP 8



- Slide the 3" band clamp onto the Vari-Tune exhaust tip with the bolt and nut facing towards the center of the vehicle and slide the Vari-Tune exhaust tip onto the outlet pipe of the BBK Vari-Tune muffler.

STEP 9



- Level out the muffler and adjust the exhaust tip to your liking. Reinstall the exhaust mount bolt for the axle back tube and tighten it down. With everything in place and adjusted tighten down all exhaust clamps. **Repeat steps 5-9 for the passenger side installation.**
- NOTE!!! Be sure to check and re-torque the exhaust clamps and hardware after 500 miles of driving.**



Join our Facebook page
www.facebook.com/bbkperformance



Follow us on Twitter
@bbkperformance



Check us out on Youtube
www.youtube.com/bbkperformance

GO TO NEXT PAGE

WWW.BBKPERFORMANCE.COM

For any questions, email us:
tech@bbkperformance.com

installation instructions

2

IMPORTANT: All appropriate safety equipment and gear must be used during the installation of this or any BBK Performance products or any time you work on a vehicle. BBK Performance Inc. accepts no responsibility for injuries or damage caused by or during the installation of this product.

2015 Ford Mustang GT 5.0L V8

Axle Back System

Part # 41115



Because your vehicle's engine is electronically controlled by a computer, some control conditions are maintained by power from the battery. When the battery is disconnected or a new battery is installed, the engine must relearn its idle and fuel trim strategy for optimum driveability and performance. To begin this process:

- 1.) With the vehicle at a complete stop, set the parking brake.
 - 2.) Put the gearshift in P (Park) (automatic transmission) or the neutral position (manual transmission), turn off all accessories and start the engine.
 - 3.) Run the engine until it reaches normal operating temperature. Approximately 4-5 minutes.
 - 4.) Allow the engine to idle for at least one minute.
 - 5.) Turn the A/C on and allow the engine to idle for at least one minute.
 - 6.) Drive the vehicle to complete the relearning process.
- The vehicle may need to be driven 10 miles or more to relearn the idle and fuel trim strategy.
 - If you do not allow the engine to relearn its idle trim, the idle quality of your vehicle may be adversely affected until the idle trim is eventually relearned.



WWW.BBKPERFORMANCE.COM

For any questions, email us:
tech@bbkperformance.com

installation instructions

3

IMPORTANT: All appropriate safety equipment and gear must be used during the installation of this or any BBK Performance products or any time you work on a vehicle. BBK Performance Inc. accepts no responsibility for injuries or damage caused by or during the installation of this product.