



MACH 1 STYLE CHIN SPOILER

(1994-2004 GT, V6 MUSTANG; 1999-2001 COBRA)

INSTALLATION INSTRUCTIONS

CONTENTS

(1) Chin Spoiler
(16) Hex Head Bolts
(16) Nuts
(32) Flat Washers

TOOLS REQUIRED

Jack
Jack Stand
Tape Measure
Masking Tape
Marker
Phillips Head Screwdriver
Drill
5/16" Drill Bit

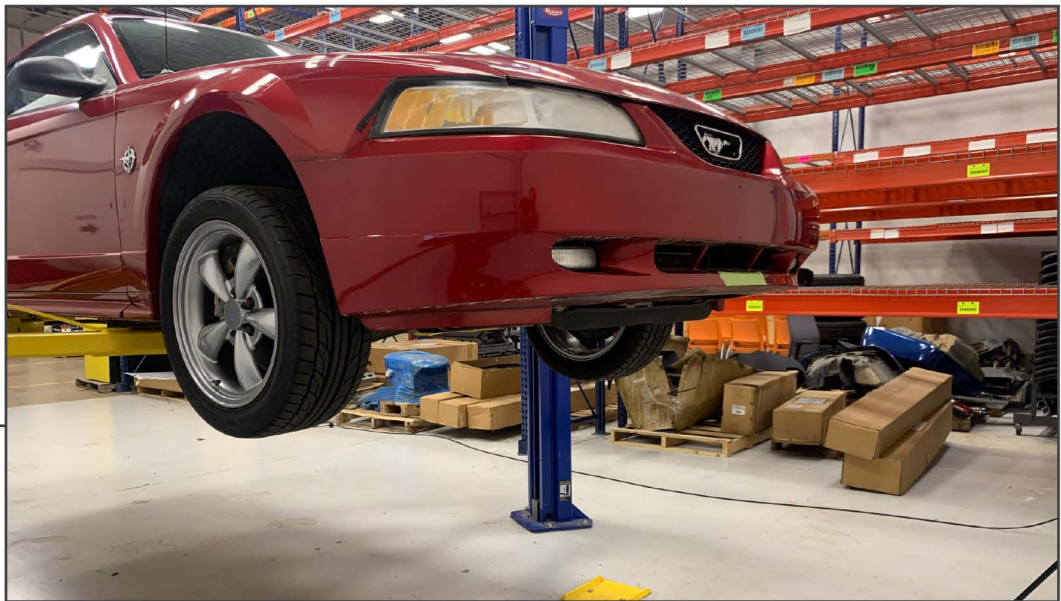
SKU #11005

STEP 1

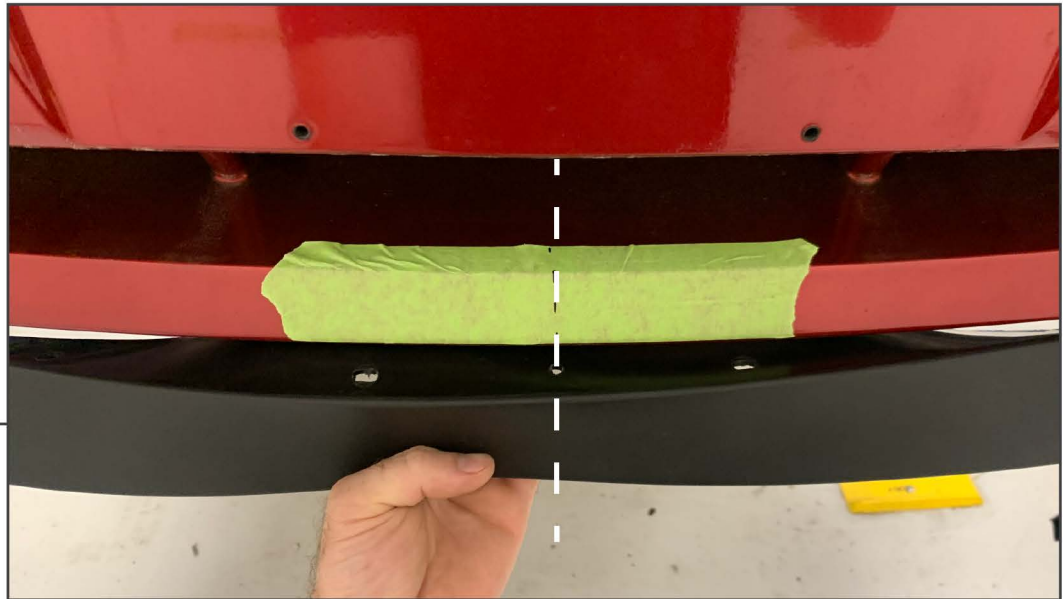


Open the box and place the chin spoiler in the sun. The Chin spoiler will expand back into its original form.

STEP 2



Raise and support the front of the vehicle to gain better access to the under side of the bumper.

STEP 3

Measure to find the center point of the bumper. Using masking tape and a marker, mark the center of the bumper. Align the center hole of the chin spoiler with the center of the bumper.

STEP 4

With a helper, carefully clamp or tape the chin spoiler to the vehicle. With the spoiler loosely secured to the vehicle mark the drill locations across the bottom of the bumper. ****Note:** The chin spoiler will fall short on both sides of the bumper. This is exactly how the original Mach 1 chin spoiler fits.

**STEP 5**

With the holes marked carefully drill each location. Always be aware of what you are drilling into. If you go to far you can drill through the top of the bumper cover.

**STEP 6**

Loosely bolt the chin spoiler to the vehicle using the supplied hardware. Adjust the chin spoiler side to side as needed. Then tighten all the bolts.



STEP 7

Installation is now complete.